

# Converting Colors

$Yxy(62.8996, 0.3306, 0.3297)$

Have a look what the booklet for  
Yxy(62.8996, 0.3306, 0.3297)  
contains.

<b>Yxy(62.9837, 0.3306, 0.3302)</b> .....	3
<b>Conversions</b> .....	4
<b>Details</b> .....	6
<b>Harmonies</b> .....	12
<b>Previews</b> .....	24
<b>Color Blindness Simulation</b> .....	27
<b>CSS Examples</b> .....	30

# Color

**Yxy(62.9837, 0.3306, 0.3302)**

# Conversions

## Conversions Part 1

Format	Color
Hex	E1CBCA
RGB	225, 203, 202
RGB Percent	88%, 80%, 79%
CMY	0.1178, 0.2039, 0.2079
CMYK	0.00, 0.10, 0.10, 0.12
HSL	3°, 28%, 84%
HSV	3°, 10%, 88%
XYZ	63.0600, 62.9837, 64.7004
YIQ	209.4640, 13.4330, 4.3530

# Conversions

## Conversions Part 2

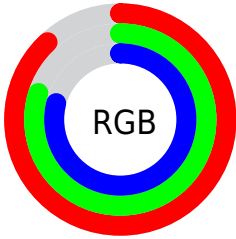
<b>Format</b>	<b>Color</b>
R <sub>Y</sub> B	225, 203, 202
Decimal	14797770
CIE Lab	83.43, 7.50, 3.29
CIE LCh	83, 8.187, 23.728
Yxy	62.9837, 0.3306, 0.3302
Android (android.graphics.Color)	4292987850 (0xFFE1CBCA)
YUV	209.4640, -3.6798, 13.6251
Hunter-Lab	79.3623, 2.9493, 7.2172

# Details

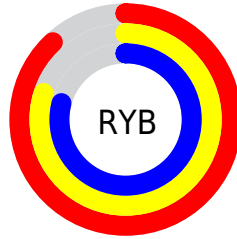
The Yxy color  $62.9837, 0.3306, 0.3302$  is a light color, and the websafe version is hex `CCCCCC`. A complement of this color would be  $71.2694, 0.2970, 0.3278$ , and the grayscale version is  $64.0965, 0.3127, 0.3290$ .

A 20% lighter version of the original color is  $100.0000, 0.3127, 0.3290$ , and  $32.1791, 0.3356, 0.3305$  is the 20% darker color. If you saturate the color by 10%, you get  $52.5408, 0.3524, 0.3315$ , and if you desaturate by 10%, it is  $74.9942, 0.3131, 0.3290$ .

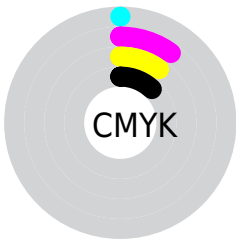
# Distribution



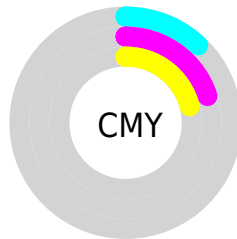
- Red (88%)
- Green (80%)
- Blue (79%)



- Red (88%)
- Yellow (80%)
- Blue (79%)



- Cyan (0%)
- Magenta (10%)
- Yellow (10%)
- Black (12%)




- Cyan (12%)
- Magenta (20%)
- Yellow (21%)


# Brightness & Saturation Gradients

These gradients show how the Yxy color 62.9837, 0.3306, 0.3302 changes by changing the brightness by 10 percent. The first figure shows a shift by +10% for each color and the second figure -10%.


Similar to the brightness gradients but the following saturation gradients show a change of the Yxy color 62.9837, 0.3306, 0.3302 by changing the saturation by 10% instead.




 62.9837, 0.3306,  
0.3302

 62.9837, 0.3306,  
0.3302


435.5103, 0.3221,  
0.3297

 45.8280, 0.3326,  
0.3303


109.1460, 0.3276,  
0.3300

 32.1101, 0.3351,  
0.3304


138.9214, 0.3264,  
0.3300

 21.4456, 0.3384,  
0.3306

173.6722, 0.3254,  
0.3299

 13.4501, 0.3428,  
0.3307

213.7827, 0.3246,  
0.3299

 7.7392, 0.3489,  
0.3309

259.6374, 0.3238,  
0.3298

 3.9285, 0.3582,  
0.3311

311.6206, 0.3232,

 1.6337, 0.3739,

0.3298

0.3312

370.1168, 0.3226,  
0.3297

0.3801, 0.4912,  
0.3431

0.0000, 0.0000,  
0.0000

62.9837, 0.3306,  
0.3302

62.9837, 0.3306,  
0.3302

52.5408, 0.3524,  
0.3315

74.9942, 0.3131,  
0.3290

43.5929, 0.3795,  
0.3328

88.6243, 0.2989,  
0.3280

36.0742, 0.4126,  
0.3341

94.7433, 0.2946,  
0.3289

29.9107, 0.4521,  
0.3352

■ 25.0216, 0.4970,  
0.3360

■ 21.3179, 0.5440,  
0.3361

■ 18.6989, 0.5874,  
0.3352

■ 17.0471, 0.6199,  
0.3336

■ 16.2224, 0.6375,  
0.3320

# Harmonies

## Analogous

The Analogous color harmony consists of three colors that are next to each other on the color wheel.



62.9837, 0.3232, 0.3214



62.9837, 0.3306, 0.3302



62.9837, 0.3331, 0.3389

# Triad

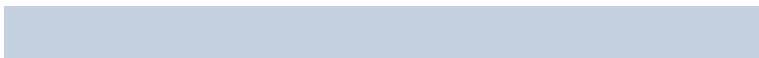
The Triadic color harmony groups three colors that are evenly spaced from another and form a triangle on the color wheel.



62.9837, 0.3306, 0.3302



62.9837, 0.3122, 0.3441



62.9837, 0.2955, 0.3129

# Complementary

The Complementary color scheme is a pair of colors which are on the opposite of each other on the color wheel.



62.9837, 0.3306, 0.3302



71.2694, 0.2970, 0.3278

# Split Complementary

Split-complementary colors differ from the complementary color scheme. The scheme consists of three colors, the original color and two neighbors of the complement color.



62.9837, 0.2927, 0.3187



62.9837, 0.3306, 0.3302



62.9837, 0.3022, 0.3368

# Square

The Square scheme is like the rectangle color scheme, but the four colors are evenly spaced on the color wheel.



62.9837, 0.3306, 0.3302



62.9837, 0.3224, 0.3471



62.9837, 0.2951, 0.3274



62.9837, 0.3029, 0.3115



# Rectangle

The Rectangle color scheme consists of four colors that form a rectangle on the color wheel.



62.9837, 0.3306, 0.3302



62.9837, 0.3317, 0.3434



62.9837, 0.2951, 0.3274



62.9837, 0.2940, 0.3144

# Sweetspot

The Sweet Spot groups the original color and five complimentary colors.



62.9865, 0.3306, 0.3302



94.9434, 0.3176, 0.3293



63.6304, 0.3144, 0.3048



20.0396, 0.3190, 0.3294



0.0000, 0.0000, 0.0000



21.4041, 0.3127, 0.3290

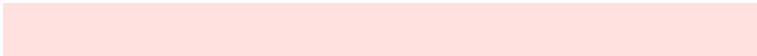


# Same Dimension

The Same Dimension uses a secret algorithm to generate beautiful new colors.



62.9865, 0.3306, 0.3302



80.9328, 0.3343, 0.3304



68.4843, 0.3292, 0.3426



13.7986, 0.3291, 0.3301



9.3956, 0.6366, 0.3327



0.6866, 0.6268, 0.3405



# Inverse Universe

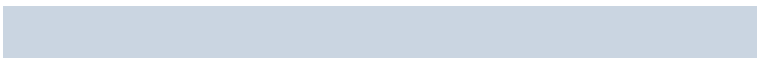
The Inverse Universe completely reimagines the original color for something new.



71.2694, 0.2970, 0.3278



93.7784, 0.2942, 0.3276



65.4335, 0.2969, 0.3151



15.4614, 0.2982, 0.3279



31.1585, 0.2208, 0.3150

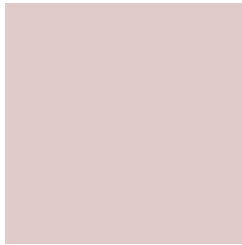


2.1928, 0.2215, 0.3173



# Previews

## White Background



This preview shows how the Yxy color 62.9837, 0.3306, 0.3302 looks on a white background.

## Color Contrast Check

Large Text (above 18pt) WCAG AA × Fail

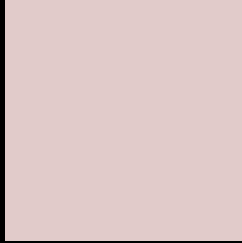
Any Text WCAG AA × Fail

Large Text (above 18pt) WCAG AAA × Fail

Any Text WCAG AAA × Fail



# Black Background



This preview shows how the Yxy color 62.9837, 0.3306, 0.3302 looks on a black background.

## Color Contrast Check

Large Text (above 18pt) WCAG AA ✓ Pass

Any Text WCAG AA ✓ Pass

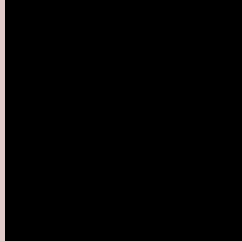
Large Text (above 18pt) WCAG AAA ✓ Pass

Any Text WCAG AAA ✓ Pass

If you want to check with other color combinations, try the [Color Contrast Checker](#).

**Yxy 62.9837, 0.3306, 0.3302**

## Background



This preview shows how black text looks on a background with the Yxy color 62.9837, 0.3306, 0.3302.



This preview shows how white text looks on a background with the Yxy color 62.9837, 0.3306, 0.3302.

# Color Blindness Simulation

Color vision deficiency is a very complex topic, and I could not describe the different causes any better than Wikipedia does, so if you want to learn more, you should check out their [article about color blindness](#).

## Dichromacy



### Original Color

62.9837, 0.3306, 0.3302

### Protanopia

62.9823, 0.3186, 0.3325

### Deuteranopia

62.8606, 0.3349, 0.3280



## Tritanopia

63.1139, 0.3213, 0.3115

# Trichromacy



## Original Color

62.9837, 0.3306, 0.3302

## Protanomaly

63.2061, 0.3233, 0.3324

## Deuteranomaly

62.9993, 0.3331, 0.3291

## Tritanomaly

63.1633, 0.3241, 0.3180

# Monochromacy



## Original Color

62.9837, 0.3306, 0.3302

## Achromatopsia

63.7597, 0.3127, 0.3290

## Achromatomaly

63.5290, 0.3195, 0.3302

# CSS Examples

## Text

The CSS property to change the color of the text to Yxy 62.9837, 0.3306, 0.3302 is called "color". The color property can be set on classes, ids or directly on the HTML element.

This example shows how text in the color `rgb(225, 203, 202)` looks like.

```
.text, #text, p{  
    color:rgb(225, 203, 202)  
}
```

If you want to add a text shadow in that color use the text-shadow property, you can generate a text shadow directly with our [CSS Text Shadow Generator](#).

Here you see how black text with a 4 pixel rgb(225, 203, 202) colored shadow looks like.

```
.shadow{ text-shadow: 4px 4px 2px rgb(225, 203, 202) }
```

## Border

The CSS property to change the border of an element to Yxy 62.9837, 0.3306, 0.3302 is called "border". The border property can be set on classes, ids or directly on the HTML element.

This example shows the color as border, it can be applied via the CSS property "border" or "border-color".

```
.border, #border, table{ border:4px solid rgb(225, 203, 202) }
```

If only the border color should be changed use the property border-color.

```
.border{ border-color:rgb(225, 203, 202) }
```

If you want to add a box shadow in that color use:

Here you see how a box with a 4 pixel rgb(225, 203, 202) colored shadow looks like.

```
.boxshadow{ -moz-box-shadow:4px 4px 4px  
4px rgb(225, 203, 202); -webkit-box-  
shadow:4px 4px 4px 4px rgb(225, 203, 202);  
box-shadow:4px 4px 4px 4px rgb(225, 203,  
202) }
```



# Background

The CSS property to change the background color of an element to Yxy 62.9837, 0.3306, 0.3302 is called "background". The background property can be set on classes, ids or directly on the HTML element.

```
.background, #background, body{  
background: rgb(225, 203, 202) }
```

If only the background color should be changed can be used:

```
.background{ background-color: rgb(225,  
203, 202) }
```

This example shows the color as background, it is applied via the CSS property "background".

To optimize and compress your CSS code, you can use our [online CSS compressor and optimizer](#) based on csstidy. If you want to create a linear or radial gradient as background or border, check our [CSS Gradient Generator](#).

Hey! You found this booklet interesting? Support Converting Colors with the new Membership Option!

The pro membership hides all ads, plus gives you double the colors in the color bucket, and more awesome pro features!

**[Learn more, Memberships starting at \\$2.50/m!](#)**

**Follow me  
on Twitter!**

@ConvertingColor