

Converting Colors

Yxy(62.9111, 0.3258, 0.3346)

Have a look what the booklet for
Yxy(62.9111, 0.3258, 0.3346)
contains.

Yxy(62.7382, 0.3263, 0.3347)	3
Conversions	4
Details	6
Harmonies	12
Previews	24
Color Blindness Simulation	27
CSS Examples	30

Color

Yxy(62.7382, 0.3263, 0.3347)

Conversions

Conversions Part 1

Format	Color
Hex	DACDC8
RGB	218, 205, 200
RGB Percent	85%, 80%, 78%
CMY	0.1452, 0.1960, 0.2156
CMYK	0.00, 0.06, 0.08, 0.15
HSL	17°, 19%, 82%
HSV	17°, 8%, 85%
XYZ	61.1637, 62.7382, 63.5442
YIQ	208.3170, 9.3530, 1.2010

Conversions

Conversions Part 2

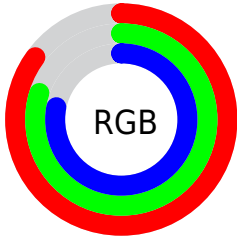
Format	Color
R _Y B	218, 207, 200
Decimal	14339528
CIE Lab	83.30, 3.64, 4.08
CIE LCh	83, 5.465, 48.281
Yxy	62.7382, 0.3263, 0.3347
Android (android.graphics.Color)	4292529608 (0xFFDACDC8)
YUV	208.3170, -4.1003, 8.4920
Hunter-Lab	79.2074, -0.7761, 7.8798

Details

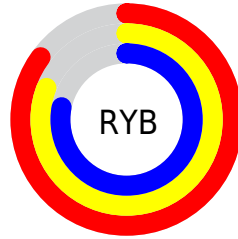
The Yxy color **62.7382, 0.3263, 0.3347** is a light color, and the websafe version is hex **CCCCCC**. A complement of this color would be **64.9171, 0.3001, 0.3232**, and the grayscale version is **63.3150, 0.3127, 0.3290**.

A 20% lighter version of the original color is **100.0000, 0.3127, 0.3290**, and **31.9951, 0.3298, 0.3365** is the 20% darker color. If you saturate the color by 10%, you get **54.6403, 0.3457, 0.3421**, and if you desaturate by 10%, it is **71.7437, 0.3100, 0.3278**.

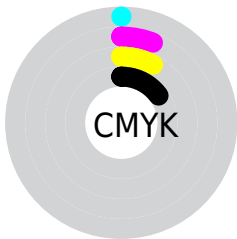
Distribution



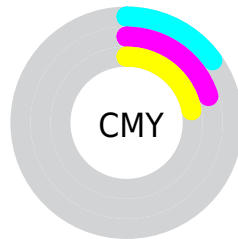
- Red (85%)
- Green (80%)
- Blue (78%)



- Red (85%)
- Yellow (81%)
- Blue (78%)



- Cyan (0%)
- Magenta (6%)
- Yellow (8%)
- Black (15%)



- Cyan (15%)
- Magenta (20%)
- Yellow (22%)

Brightness & Saturation Gradients

These gradients show how the Yxy color 62.7382, 0.3263, 0.3347 changes by changing the brightness by 10 percent. The first figure shows a shift by +10% for each color and the second figure -10%.

Similar to the brightness gradients but the following saturation gradients show a change of the Yxy color 62.7382, 0.3263, 0.3347 by changing the saturation by 10% instead.

■ 62.7382, 0.3263,
0.3347

■ 62.7382, 0.3263,
0.3347

434.6187, 0.3198,
0.3320

■ 45.6294, 0.3278,
0.3353

108.7917, 0.3240,
0.3338

■ 31.9535, 0.3297,
0.3361

138.5053, 0.3231,
0.3334

■ 21.3260, 0.3322,
0.3371

173.1892, 0.3224,
0.3331

■ 13.3625, 0.3355,
0.3384

213.2280, 0.3217,
0.3328

■ 7.6786, 0.3402,
0.3402

259.0059, 0.3212,
0.3326

■ 3.8900, 0.3473,
0.3428

310.9074, 0.3207,

■ 1.6122, 0.3593,

0.3324

0.3471

369.3169, 0.3202,
0.3322

0.3658, 0.4768,
0.3996

0.0000, 0.0000,
0.0000

62.7382, 0.3263,
0.3347

62.7382, 0.3263,
0.3347

54.6403, 0.3457,
0.3421

71.7437, 0.3100,
0.3278

47.4135, 0.3687,
0.3497

81.6757, 0.2964,
0.3215

41.0305, 0.3959,
0.3574

91.8738, 0.2905,
0.3261

35.4600, 0.4274,
0.3646

93.6396, 0.2905,
0.3289

■ 30.6681, 0.4627,
0.3705

■ 26.6189, 0.5005,
0.3740

■ 23.2730, 0.5383,
0.3739

■ 20.5873, 0.5723,
0.3694

■ 18.5103, 0.5989,
0.3608

Harmonies

Analogous

The Analogous color harmony consists of three colors that are next to each other on the color wheel.



62.7382, 0.3240, 0.3287



62.7382, 0.3263, 0.3347



62.7382, 0.3250, 0.3392

Triad

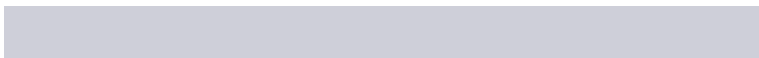
The Triadic color harmony groups three colors that are evenly spaced from another and form a triangle on the color wheel.



62.7382, 0.3263, 0.3347



62.7382, 0.3068, 0.3352



62.7382, 0.3051, 0.3172

Complementary

The Complementary color scheme is a pair of colors which are on the opposite of each other on the color wheel.



62.7382, 0.3263, 0.3347



64.9171, 0.3001, 0.3232

Split Complementary

Split-complementary colors differ from the complementary color scheme. The scheme consists of three colors, the original color and two neighbors of the complement color.



62.7382, 0.3006, 0.3188



62.7382, 0.3263, 0.3347



62.7382, 0.3016, 0.3291

Square

The Square scheme is like the rectangle color scheme, but the four colors are evenly spaced on the color wheel.



62.7382, 0.3263, 0.3347



62.7382, 0.3137, 0.3396



62.7382, 0.2993, 0.3231



62.7382, 0.3117, 0.3187

Rectangle

The Rectangle color scheme consists of four colors that form a rectangle on the color wheel.



62.7382, 0.3263, 0.3347



62.7382, 0.3222, 0.3408



62.7382, 0.2993, 0.3231



62.7382, 0.3033, 0.3174

Sweetspot

The Sweet Spot groups the original color and five complimentary colors.



62.7409, 0.3263, 0.3347



97.3496, 0.3159, 0.3304



61.0330, 0.3171, 0.3142



20.8647, 0.3157, 0.3303



0.0000, 0.0000, 0.0000



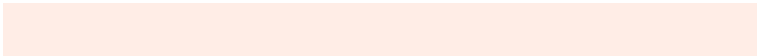
21.4041, 0.3127, 0.3290

Same Dimension

The Same Dimension uses a secret algorithm to generate beautiful new colors.



62.7409, 0.3263, 0.3347



87.2789, 0.3297, 0.3360



67.0511, 0.3253, 0.3445



13.6383, 0.3285, 0.3356



11.0636, 0.6006, 0.3613



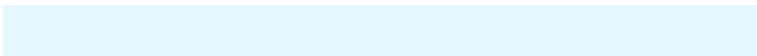
0.8605, 0.5682, 0.3871

Inverse Universe

The Inverse Universe completely reimagines the original color for something new.



64.9171, 0.3001, 0.3232



91.0372, 0.2972, 0.3219



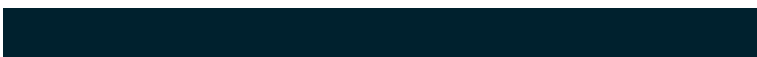
60.6287, 0.3001, 0.3130



14.1852, 0.2982, 0.3223



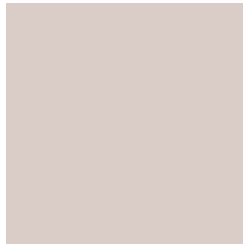
17.7400, 0.1990, 0.2364



1.2914, 0.2037, 0.2533

Previews

White Background



This preview shows how the Yxy color 62.7382, 0.3263, 0.3347 looks on a white background.

Color Contrast Check

Large Text (above 18pt) WCAG AA × Fail

Any Text WCAG AA × Fail

Large Text (above 18pt) WCAG AAA × Fail

Any Text WCAG AAA × Fail

Black Background



This preview shows how the Yxy color 62.7382, 0.3263, 0.3347 looks on a black background.

Color Contrast Check

Large Text (above 18pt) WCAG AA ✓ Pass

Any Text WCAG AA ✓ Pass

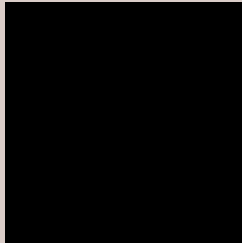
Large Text (above 18pt) WCAG AAA ✓ Pass

Any Text WCAG AAA ✓ Pass

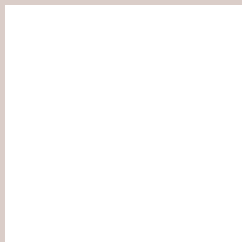
If you want to check with other color combinations, try the [Color Contrast Checker](#).

Yxy 62.7382, 0.3263, 0.3347

Background



This preview shows how black text looks on a background with the Yxy color 62.7382, 0.3263, 0.3347.



This preview shows how white text looks on a background with the Yxy color 62.7382, 0.3263, 0.3347.

Color Blindness Simulation

Color vision deficiency is a very complex topic, and I could not describe the different causes any better than Wikipedia does, so if you want to learn more, you should check out their [article about color blindness](#).

Dichromacy



Original Color

62.7382, 0.3263, 0.3347

Protanopia

62.9888, 0.3215, 0.3359

Deuteranopia

62.8133, 0.3356, 0.3291



Tritanopia

62.6752, 0.3158, 0.3113

Trichromacy



Original Color

62.7382, 0.3263, 0.3347

Protanomaly

62.8067, 0.3232, 0.3347

Deuteranomaly

62.6269, 0.3323, 0.3302

Tritanomaly

62.6307, 0.3201, 0.3201

Monochromacy



Original Color

62.7382, 0.3263, 0.3347

Achromatopsia

63.0757, 0.3127, 0.3290

Achromatomaly

63.0305, 0.3179, 0.3313

CSS Examples

Text

The CSS property to change the color of the text to Yxy 62.7382, 0.3263, 0.3347 is called "color". The color property can be set on classes, ids or directly on the HTML element.

This example shows how text in the color rgb(218, 205, 200) looks like.

```
.text, #text, p{  
    color:rgb(218, 205, 200)  
}
```

If you want to add a text shadow in that color use the text-shadow property, you can generate a text shadow directly with our [CSS Text Shadow Generator](#).

Here you see how black text with a 4 pixel rgb(218, 205, 200) colored shadow looks like.

```
.shadow{ text-shadow: 4px 4px 2px rgb(218, 205, 200) }
```

Border

The CSS property to change the border of an element to Yxy 62.7382, 0.3263, 0.3347 is called "border". The border property can be set on classes, ids or directly on the HTML element.

This example shows the color as border, it can be applied via the CSS property "border" or "border-color".

```
.border, #border, table{ border:4px solid rgb(218, 205, 200) }
```

If only the border color should be changed use the property `border-color`.

```
.border{ border-color:rgb(218, 205, 200) }
```

If you want to add a box shadow in that color use:

Here you see how a box with a 4 pixel `rgb(218, 205, 200)` colored shadow looks like.

```
.boxshadow{ -moz-box-shadow:4px 4px 4px  
4px rgb(218, 205, 200); -webkit-box-  
shadow:4px 4px 4px 4px rgb(218, 205, 200);  
box-shadow:4px 4px 4px 4px rgb(218, 205,  
200) }
```


Background

The CSS property to change the background color of an element to Yxy 62.7382, 0.3263, 0.3347 is called "background". The background property can be set on classes, ids or directly on the HTML element.

```
.background, #background, body{  
background: rgb(218, 205, 200) }
```

If only the background color should be changed can be used:

```
.background{ background-color: rgb(218,  
205, 200) }
```

This example shows the color as background, it is applied via the CSS property "background".

To optimize and compress your CSS code, you can use our [online CSS compressor and optimizer](#) based on csstidy. If you want to create a linear or radial gradient as background or border, check our [CSS Gradient Generator](#).

Hey! You found this booklet interesting? Support Converting Colors with the new Membership Option!

The pro membership hides all ads, plus gives you double the colors in the color bucket, and more awesome pro features!

[Learn more, Memberships starting at \\$2.50/m!](#)

**Follow me
on Twitter!**

@ConvertingColor