

Converting Colors

$Yxy(63.0906, 0.3296, 0.3324)$

Have a look what the booklet for
Yxy(63.0906, 0.3296, 0.3324)
contains.

Yxy(63.0908, 0.3297, 0.3324)	3
Conversions	4
Details	6
Harmonies	12
Previews	24
Color Blindness Simulation	27
CSS Examples	30

Color

Yxy(63.0908, 0.3297, 0.3324)

Conversions

Conversions Part 1

Format	Color
Hex	DFCCC9
RGB	223, 204, 201
RGB Percent	87%, 80%, 79%
CMY	0.1253, 0.2000, 0.2118
CMYK	0.00, 0.09, 0.10, 0.13
HSL	8°, 26%, 83%
HSV	8°, 10%, 87%
XYZ	62.5783, 63.0908, 64.1347
YIQ	209.3390, 12.2870, 3.0950

Conversions

Conversions Part 2

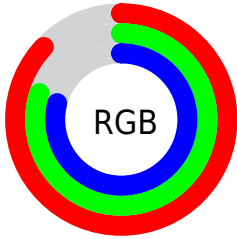
Format	Color
R _Y B	223, 204, 201
Decimal	14666953
CIE Lab	83.49, 6.14, 3.88
CIE LCh	83, 7.264, 32.314
Yxy	63.0908, 0.3297, 0.3324
Android (android.graphics.Color)	4292857033 (0xFFDFCCC9)
YUV	209.3390, -4.1111, 11.9807
Hunter-Lab	79.4297, 1.6284, 7.7277

Details

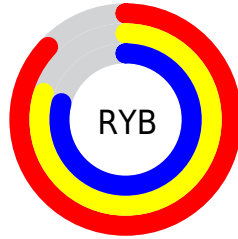
The Yxy color **63.0908, 0.3297, 0.3324** is a light color, and the websafe version is hex **CCCCCC**. A complement of this color would be **68.9658, 0.2975, 0.3256**, and the grayscale version is **64.0199, 0.3127, 0.3290**.

A 20% lighter version of the original color is **100.0000, 0.3127, 0.3290**, and **32.2441, 0.3343, 0.3335** is the 20% darker color. If you saturate the color by 10%, you get **53.5150, 0.3507, 0.3361**, and if you desaturate by 10%, it is **73.9590, 0.3125, 0.3290**.

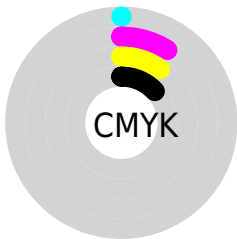
Distribution



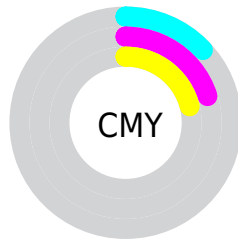
- Red (87%)
- Green (80%)
- Blue (79%)



- Red (87%)
- Yellow (80%)
- Blue (79%)



- Cyan (0%)
- Magenta (9%)
- Yellow (10%)
- Black (13%)




- Cyan (13%)
- Magenta (20%)
- Yellow (21%)

Brightness & Saturation Gradients


These gradients show how the Yxy color 63.0908, 0.3297, 0.3324 changes by changing the brightness by 10 percent. The first figure shows a shift by +10% for each color and the second figure -10%.

Similar to the brightness gradients but the following saturation gradients show a change of the Yxy color 63.0908, 0.3297, 0.3324 by changing the saturation by 10% instead.

 63.0908, 0.3297,
0.3324

 63.0908, 0.3297,
0.3324

435.8989, 0.3216,
0.3308

 45.9147, 0.3316,
0.3328


109.3005, 0.3268,
0.3319

 32.1785, 0.3340,
0.3332


139.1029, 0.3257,
0.3317

 21.4979, 0.3371,
0.3337


173.8827, 0.3248,
0.3315

 13.4884, 0.3412,
0.3344

214.0246, 0.3240,
0.3313

 7.7657, 0.3471,
0.3354

259.9127, 0.3233,
0.3312

 3.9454, 0.3559,
0.3367

311.9315, 0.3227,

 1.6431, 0.3708,

0.3311

370.4655, 0.3221,
0.3309

0.3387

0.3864, 0.4912,
0.3670

0.0000, 0.0000,
0.0000

63.0908, 0.3297,
0.3324

63.0908, 0.3297,
0.3324

53.5150, 0.3507,
0.3361

73.9590, 0.3125,
0.3290

45.1754, 0.3763,
0.3399

86.1566, 0.2985,
0.3258

38.0241, 0.4073,
0.3437

94.4364, 0.2935,
0.3289

32.0068, 0.4438,
0.3471

■ 27.0648, 0.4853,
0.3494

■ 23.1345, 0.5294,
0.3501

■ 20.1451, 0.5717,
0.3485

■ 18.0167, 0.6062,
0.3442

■ 16.6497, 0.6290,
0.3386

Harmonies

Analogous

The Analogous color harmony consists of three colors that are next to each other on the color wheel.



63.0908, 0.3242, 0.3244



63.0908, 0.3297, 0.3324



63.0908, 0.3305, 0.3397

Triad

The Triadic color harmony groups three colors that are evenly spaced from another and form a triangle on the color wheel.



63.0908, 0.3297, 0.3324



63.0908, 0.3096, 0.3408



63.0908, 0.2990, 0.3139

Complementary

The Complementary color scheme is a pair of colors which are on the opposite of each other on the color wheel.



63.0908, 0.3297, 0.3324



68.9658, 0.2975, 0.3256

Split Complementary

Split-complementary colors differ from the complementary color scheme. The scheme consists of three colors, the original color and two neighbors of the complement color.



63.0908, 0.2952, 0.3180



63.0908, 0.3297, 0.3324



63.0908, 0.3013, 0.3336

Square

The Square scheme is like the rectangle color scheme, but the four colors are evenly spaced on the color wheel.



63.0908, 0.3297, 0.3324



63.0908, 0.3188, 0.3447



63.0908, 0.2960, 0.3252



63.0908, 0.3065, 0.3138

Rectangle

The Rectangle color scheme consists of four colors that form a rectangle on the color wheel.



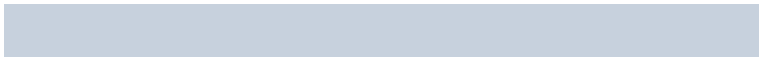
63.0908, 0.3297, 0.3324



63.0908, 0.3284, 0.3431



63.0908, 0.2960, 0.3252



63.0908, 0.2973, 0.3149

Sweetspot

The Sweet Spot groups the original color and five complimentary colors.



63.0936, 0.3297, 0.3324



95.3706, 0.3176, 0.3300



62.6412, 0.3160, 0.3080



20.1543, 0.3189, 0.3303



0.0000, 0.0000, 0.0000



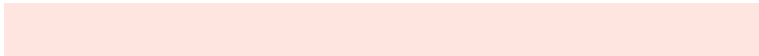
21.4041, 0.3127, 0.3290

Same Dimension

The Same Dimension uses a secret algorithm to generate beautiful new colors.



63.0936, 0.3297, 0.3324



82.4542, 0.3340, 0.3332



68.4966, 0.3284, 0.3445



13.9988, 0.3289, 0.3322



9.8722, 0.6274, 0.3400



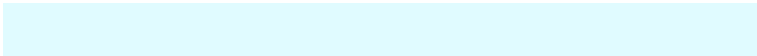
0.7821, 0.6029, 0.3595

Inverse Universe

The Inverse Universe completely reimagines the original color for something new.



68.9658, 0.2975, 0.3256



92.0312, 0.2942, 0.3248



63.3896, 0.2974, 0.3130



15.2386, 0.2982, 0.3257



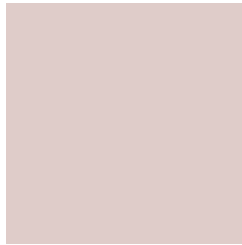
25.6152, 0.2127, 0.2856



1.8644, 0.2147, 0.2930

Previews

White Background



This preview shows how the Yxy color 63.0908, 0.3297, 0.3324 looks on a white background.

Color Contrast Check

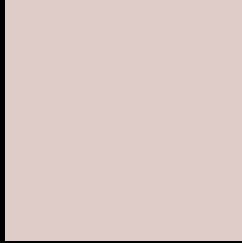
Large Text (above 18pt) WCAG AA × Fail

Any Text WCAG AA × Fail

Large Text (above 18pt) WCAG AAA × Fail

Any Text WCAG AAA × Fail

Black Background



This preview shows how the Yxy color 63.0908, 0.3297, 0.3324 looks on a black background.

Color Contrast Check

Large Text (above 18pt) WCAG AA ✓ Pass

Any Text WCAG AA ✓ Pass

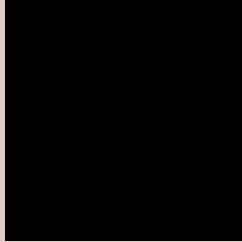
Large Text (above 18pt) WCAG AAA ✓ Pass

Any Text WCAG AAA ✓ Pass

If you want to check with other color combinations, try the [Color Contrast Checker](#).

Yxy 63.0908, 0.3297, 0.3324

Background



This preview shows how black text looks on a background with the Yxy color 63.0908, 0.3297, 0.3324.



This preview shows how white text looks on a background with the Yxy color 63.0908, 0.3297, 0.3324.

Color Blindness Simulation

Color vision deficiency is a very complex topic, and I could not describe the different causes any better than Wikipedia does, so if you want to learn more, you should check out their [article about color blindness](#).

Dichromacy



Original Color

63.0908, 0.3297, 0.3324

Protanopia

63.0836, 0.3201, 0.3336

Deuteranopia

63.0265, 0.3356, 0.3280



Tritanopia

62.7906, 0.3197, 0.3114

Trichromacy



Original Color

63.0908, 0.3297, 0.3324

Protanomaly

63.1586, 0.3240, 0.3336

Deuteranomaly

62.9993, 0.3331, 0.3291

Tritanomaly

62.7915, 0.3233, 0.3191

Monochromacy



Original Color

63.0908, 0.3297, 0.3324

Achromatopsia

63.7597, 0.3127, 0.3290

Achromatomaly

63.3780, 0.3187, 0.3302

CSS Examples

Text

The CSS property to change the color of the text to Yxy 63.0908, 0.3297, 0.3324 is called "color". The color property can be set on classes, ids or directly on the HTML element.

This example shows how text in the color `rgb(223, 204, 201)` looks like.

```
.text, #text, p{  
    color:rgb(223, 204, 201)  
}
```

If you want to add a text shadow in that color use the text-shadow property, you can generate a text shadow directly with our [CSS Text Shadow Generator](#).

Here you see how black text with a 4 pixel rgb(223, 204, 201) colored shadow looks like.

```
.shadow{ text-shadow: 4px 4px 2px rgb(223, 204, 201) }
```

Border

The CSS property to change the border of an element to Yxy 63.0908, 0.3297, 0.3324 is called "border". The border property can be set on classes, ids or directly on the HTML element.

This example shows the color as border, it can be applied via the CSS property "border" or "border-color".

```
.border, #border, table{ border:4px solid rgb(223, 204, 201) }
```

If only the border color should be changed use the property `border-color`.

```
.border{ border-color:rgb(223, 204, 201) }
```

If you want to add a box shadow in that color use:

Here you see how a box with a 4 pixel `rgb(223, 204, 201)` colored shadow looks like.

```
.boxshadow{ -moz-box-shadow:4px 4px 4px  
4px rgb(223, 204, 201); -webkit-box-  
shadow:4px 4px 4px 4px rgb(223, 204, 201);  
box-shadow:4px 4px 4px 4px rgb(223, 204,  
201) }
```


Background

The CSS property to change the background color of an element to Yxy 63.0908, 0.3297, 0.3324 is called "background". The background property can be set on classes, ids or directly on the HTML element.

```
.background, #background, body{  
background: rgb(223, 204, 201) }
```

If only the background color should be changed can be used:

```
.background{ background-color: rgb(223,  
204, 201) }
```

This example shows the color as background, it is applied via the CSS property "background".

To optimize and compress your CSS code, you can use our [online CSS compressor and optimizer](#) based on csstidy. If you want to create a linear or radial gradient as background or border, check our [CSS Gradient Generator](#).

Hey! You found this booklet interesting? Support Converting Colors with the new Membership Option!

The pro membership hides all ads, plus gives you double the colors in the color bucket, and more awesome pro features!

[Learn more, Memberships starting at \\$2.50/m!](#)

**Follow me
on Twitter!**

@ConvertingColor