

Converting Colors

$Yxy(63.1417, 0.3260, 0.3343)$

Have a look what the booklet for
Yxy(63.1417, 0.3260, 0.3343)
contains.

Yxy(63.4197, 0.3263, 0.3347)	3
Conversions	4
Details	6
Harmonies	12
Previews	24
Color Blindness Simulation	27
CSS Examples	30

Color

Yxy(63.4197, 0.3263, 0.3347)

Conversions

Conversions Part 1

Format	Color
Hex	DBCEC9
RGB	219, 206, 201
RGB Percent	86%, 81%, 79%
CMY	0.1411, 0.1921, 0.2118
CMYK	0.00, 0.06, 0.08, 0.14
HSL	17°, 20%, 82%
HSV	17°, 8%, 86%
XYZ	61.8280, 63.4197, 64.2345
YIQ	209.3170, 9.3530, 1.2010

Conversions

Conversions Part 2

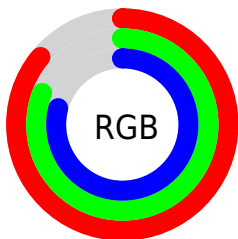
Format	Color
R _Y B	219, 208, 201
Decimal	14405321
CIE Lab	83.66, 3.65, 4.09
CIE LCh	84, 5.485, 48.281
Yxy	63.4197, 0.3263, 0.3347
Android (android.graphics.Color)	4292595401 (0xFFDBCEC9)
YUV	209.3170, -4.1003, 8.4920
Hunter-Lab	79.6365, -0.7803, 7.9225

Details

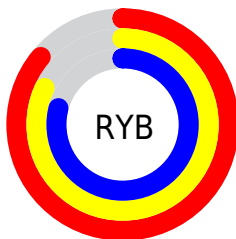
The Yxy color **63.4197, 0.3263, 0.3347** is a light color, and the websafe version is hex **CCCCCC**. A complement of this color would be **65.6223, 0.3001, 0.3232**, and the grayscale version is **64.0027, 0.3127, 0.3290**.

A 20% lighter version of the original color is **100.0000, 0.3127, 0.3290**, and **32.4556, 0.3297, 0.3365** is the 20% darker color. If you saturate the color by 10%, you get **55.2316, 0.3457, 0.3421**, and if you desaturate by 10%, it is **72.5258, 0.3100, 0.3278**.

Distribution



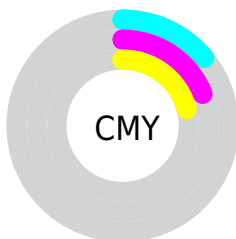
- Red (86%)
- Green (81%)
- Blue (79%)



- Red (86%)
- Yellow (82%)
- Blue (79%)



- Cyan (0%)
- Magenta (6%)
- Yellow (8%)
- Black (14%)



- Cyan (14%)
- Magenta (19%)
- Yellow (21%)

Brightness & Saturation Gradients

These gradients show how the Yxy color 63.4197, 0.3263, 0.3347 changes by changing the brightness by 10 percent. The first figure shows a shift by +10% for each color and the second figure -10%.

Similar to the brightness gradients but the following saturation gradients show a change of the Yxy color 63.4197, 0.3263, 0.3347 by changing the saturation by 10% instead.

■ 63.4197, 0.3263,
0.3347

■ 63.4197, 0.3263,
0.3347

437.0911, 0.3198,
0.3320

■ 46.1808, 0.3278,
0.3353

109.7748, 0.3240,
0.3338

■ 32.3885, 0.3297,
0.3361

139.6598, 0.3231,
0.3334

■ 21.6584, 0.3322,
0.3371

174.5290, 0.3224,
0.3331

■ 13.6061, 0.3355,
0.3384

214.7667, 0.3217,
0.3328

■ 7.8472, 0.3401,
0.3401

260.7574, 0.3212,
0.3326

■ 3.9974, 0.3471,
0.3428

312.8854, 0.3207,

■ 1.6721, 0.3589,

0.3324

0.3470

371.5352, 0.3202,
0.3322

0.4055, 0.4583,
0.3917

0.0000, 0.0000,
0.0000

63.4197, 0.3263,
0.3347

63.4197, 0.3263,
0.3347

55.2316, 0.3457,
0.3421

72.5258, 0.3100,
0.3278

47.9245, 0.3688,
0.3498

82.5690, 0.2964,
0.3215

41.4710, 0.3959,
0.3575

92.8020, 0.2911,
0.3273

35.8391, 0.4274,
0.3646

93.8014, 0.2912,
0.3289

■ 30.9948, 0.4627,
0.3705

■ 26.9016, 0.5006,
0.3740

■ 23.5197, 0.5384,
0.3739

■ 20.8054, 0.5723,
0.3694

■ 18.7067, 0.5990,
0.3608

Harmonies

Analogous

The Analogous color harmony consists of three colors that are next to each other on the color wheel.



63.4197, 0.3240, 0.3287



63.4197, 0.3263, 0.3347



63.4197, 0.3250, 0.3392

Triad

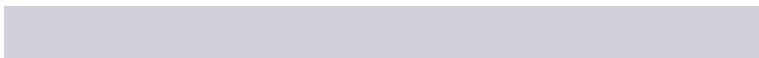
The Triadic color harmony groups three colors that are evenly spaced from another and form a triangle on the color wheel.



63.4197, 0.3263, 0.3347



63.4197, 0.3068, 0.3352



63.4197, 0.3051, 0.3172

Complementary

The Complementary color scheme is a pair of colors which are on the opposite of each other on the color wheel.



63.4197, 0.3263, 0.3347



65.6223, 0.3001, 0.3232

Split Complementary

Split-complementary colors differ from the complementary color scheme. The scheme consists of three colors, the original color and two neighbors of the complement color.



63.4197, 0.3006, 0.3188



63.4197, 0.3263, 0.3347



63.4197, 0.3016, 0.3291

Square

The Square scheme is like the rectangle color scheme, but the four colors are evenly spaced on the color wheel.



63.4197, 0.3263, 0.3347



63.4197, 0.3137, 0.3396



63.4197, 0.2993, 0.3231



63.4197, 0.3117, 0.3187

Rectangle

The Rectangle color scheme consists of four colors that form a rectangle on the color wheel.



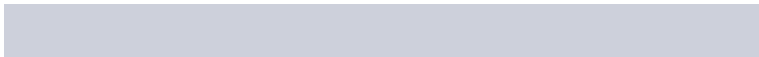
63.4197, 0.3263, 0.3347



63.4197, 0.3222, 0.3408



63.4197, 0.2993, 0.3231



63.4197, 0.3033, 0.3174

Sweetspot

The Sweet Spot groups the original color and five complimentary colors.



63.4225, 0.3263, 0.3347



97.3496, 0.3159, 0.3304



61.6960, 0.3171, 0.3142



20.8647, 0.3157, 0.3303



0.0000, 0.0000, 0.0000



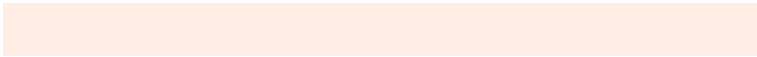
21.4041, 0.3127, 0.3290

Same Dimension

The Same Dimension uses a secret algorithm to generate beautiful new colors.



63.4225, 0.3263, 0.3347



87.2789, 0.3297, 0.3360



67.7794, 0.3253, 0.3445



13.6383, 0.3285, 0.3356



11.0636, 0.6006, 0.3613



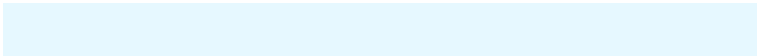
0.8605, 0.5682, 0.3871

Inverse Universe

The Inverse Universe completely reimagines the original color for something new.



65.6223, 0.3001, 0.3232



91.0372, 0.2972, 0.3219



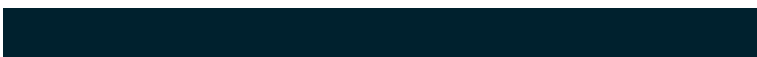
61.2873, 0.3001, 0.3130



14.1852, 0.2982, 0.3223



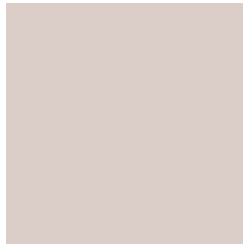
17.7400, 0.1990, 0.2364



1.2914, 0.2037, 0.2533

Previews

White Background



This preview shows how the Yxy color 63.4197, 0.3263, 0.3347 looks on a white background.

Color Contrast Check

Large Text (above 18pt) WCAG AA × Fail

Any Text WCAG AA × Fail

Large Text (above 18pt) WCAG AAA × Fail

Any Text WCAG AAA × Fail

Black Background



This preview shows how the Yxy color 63.4197, 0.3263, 0.3347 looks on a black background.

Color Contrast Check

Large Text (above 18pt) WCAG AA ✓ Pass

Any Text WCAG AA ✓ Pass

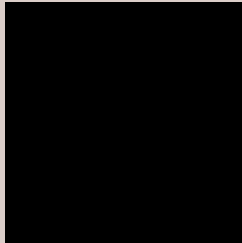
Large Text (above 18pt) WCAG AAA ✓ Pass

Any Text WCAG AAA ✓ Pass

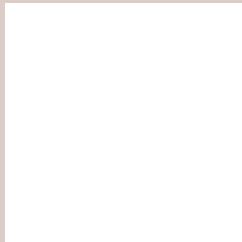
If you want to check with other color combinations, try the [Color Contrast Checker](#).

Yxy 63.4197, 0.3263, 0.3347

Background



This preview shows how black text looks on a background with the Yxy color 63.4197, 0.3263, 0.3347.



This preview shows how white text looks on a background with the Yxy color 63.4197, 0.3263, 0.3347.

Color Blindness Simulation

Color vision deficiency is a very complex topic, and I could not describe the different causes any better than Wikipedia does, so if you want to learn more, you should check out their [article about color blindness](#).

Dichromacy



Original Color

63.4197, 0.3263, 0.3347

Protanopia

63.6722, 0.3215, 0.3359

Deuteranopia

63.4943, 0.3355, 0.3291



Tritanopia

63.3559, 0.3158, 0.3114

Trichromacy



Original Color

63.4197, 0.3263, 0.3347

Protanomaly

63.4888, 0.3231, 0.3347

Deuteranomaly

63.3070, 0.3322, 0.3302

Tritanomaly

63.3113, 0.3200, 0.3201

Monochromacy



Original Color

63.4197, 0.3263, 0.3347

Achromatopsia

63.7597, 0.3127, 0.3290

Achromatomaly

63.7141, 0.3179, 0.3313

CSS Examples

Text

The CSS property to change the color of the text to Yxy 63.4197, 0.3263, 0.3347 is called "color". The color property can be set on classes, ids or directly on the HTML element.

This example shows how text in the color `rgb(219, 206, 201)` looks like.

```
.text, #text, p{  
    color:rgb(219, 206, 201)  
}
```

If you want to add a text shadow in that color use the text-shadow property, you can generate a text shadow directly with our [CSS Text Shadow Generator](#).

Here you see how black text with a 4 pixel rgb(219, 206, 201) colored shadow looks like.

```
.shadow{ text-shadow: 4px 4px 2px rgb(219, 206, 201) }
```

Border

The CSS property to change the border of an element to Yxy 63.4197, 0.3263, 0.3347 is called "border". The border property can be set on classes, ids or directly on the HTML element.

This example shows the color as border, it can be applied via the CSS property "border" or "border-color".

```
.border, #border, table{ border:4px solid rgb(219, 206, 201) }
```

If only the border color should be changed use the property `border-color`.

```
.border{ border-color:rgb(219, 206, 201) }
```

If you want to add a box shadow in that color use:

Here you see how a box with a 4 pixel `rgb(219, 206, 201)` colored shadow looks like.

```
.boxshadow{ -moz-box-shadow:4px 4px 4px  
4px rgb(219, 206, 201); -webkit-box-  
shadow:4px 4px 4px 4px rgb(219, 206, 201);  
box-shadow:4px 4px 4px 4px rgb(219, 206,  
201) }
```


Background

The CSS property to change the background color of an element to Yxy 63.4197, 0.3263, 0.3347 is called "background". The background property can be set on classes, ids or directly on the HTML element.

```
.background, #background, body{  
background: rgb(219, 206, 201) }
```

If only the background color should be changed can be used:

```
.background{ background-color: rgb(219,  
206, 201) }
```

This example shows the color as background, it is applied via the CSS property "background".

To optimize and compress your CSS code, you can use our [online CSS compressor and optimizer](#) based on csstidy. If you want to create a linear or radial gradient as background or border, check our [CSS Gradient Generator](#).

Hey! You found this booklet interesting? Support Converting Colors with the new Membership Option!

The pro membership hides all ads, plus gives you double the colors in the color bucket, and more awesome pro features!

[Learn more, Memberships starting at \\$2.50/m!](#)

**Follow me
on Twitter!**

@ConvertingColor