

# Converting Colors

$Y_{xy}(63.1971, 0.3518, 0.3116)$

Have a look what the booklet for  
Yxy(63.1971, 0.3518, 0.3116)  
contains.

<b>Yxy(63.0757, 0.3520, 0.3116)</b> .....	3
<b><i>Conversions</i></b> .....	4
<b><i>Details</i></b> .....	6
<b><i>Harmonies</i></b> .....	12
<b><i>Previews</i></b> .....	24
<b><i>Color Blindness Simulation</i></b> .....	27
<b><i>CSS Examples</i></b> .....	30

# Color

**Yxy(63.0757, 0.3520, 0.3116)**

# Conversions

## Conversions Part 1

Format	Color
Hex	FFBFD0
RGB	255, 191, 208
RGB Percent	100%, 75%, 82%
CMY	0.0000, 0.2509, 0.1843
CMYK	0.00, 0.25, 0.18, 0.00
HSL	344°, 100%, 87%
HSV	344°, 25%, 100%
XYZ	71.2537, 63.0757, 68.0958
YIQ	212.0740, 32.6870, 18.8550

# Conversions

## Conversions Part 2

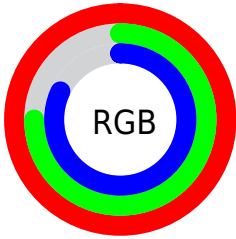
<b>Format</b>	<b>Color</b>
<b>R<sub>YB</sub></b>	255, 191, 208
Decimal	16760784
CIE <sub>Lab</sub>	83.48, 25.41, 0.49
CIE <sub>LCh</sub>	83, 25.415, 1.097
Yxy	63.0757, 0.3520, 0.3116
Android (android.graphics.Color)	4294950864 (0xFFFFBFD0)
YUV	212.0740, -2.0085, 37.6461
Hunter-Lab	79.4202, 21.1600, 4.7582

# Details

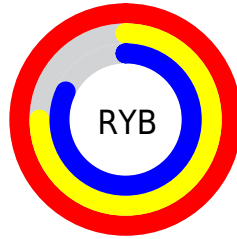
The Yxy color **63.0757, 0.3520, 0.3116** is a light color, and the websafe version is hex **FFCCCC**. A complement of this color would be **88.7649, 0.2843, 0.3472**, and the grayscale version is **65.8891, 0.3127, 0.3290**.

A 20% lighter version of the original color is **95.6148, 0.3130, 0.3223**, and **32.0947, 0.3612, 0.3066** is the 20% darker color. If you saturate the color by 10%, you get **52.0395, 0.3742, 0.3043**, and if you desaturate by 10%, it is **76.1625, 0.3338, 0.3188**.

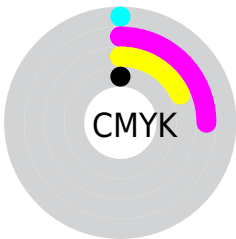
# Distribution



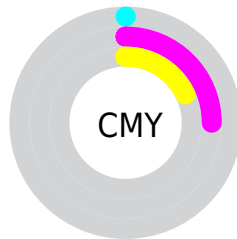
- Red (100%)
- Green (75%)
- Blue (82%)



- Red (100%)
- Yellow (75%)
- Blue (82%)



- Cyan (0%)
- Magenta (25%)
- Yellow (18%)
- Black (0%)



- Cyan (0%)
- Magenta (25%)
- Yellow (18%)

# Brightness & Saturation Gradients

These gradients show how the Yxy color 63.0757, 0.3520, 0.3116 changes by changing the brightness by 10 percent. The first figure shows a shift by +10% for each color and the second figure -10%.


Similar to the brightness gradients but the following saturation gradients show a change of the Yxy color 63.0757, 0.3520, 0.3116 by changing the saturation by 10% instead.





 63.0757, 0.3520,  
0.3116

 63.0757, 0.3520,  
0.3116

435.8442, 0.3333,  
0.3199

 45.9025, 0.3564,  
0.3096


 109.2787, 0.3454,  
0.3145

 32.1689, 0.3619,  
0.3072


139.0773, 0.3429,  
0.3157

 21.4905, 0.3689,  
0.3040


173.8531, 0.3407,  
0.3166

 13.4830, 0.3784,  
0.2998

213.9905, 0.3389,  
0.3175

 7.7620, 0.3915,  
0.2939

259.8739, 0.3372,  
0.3182

 3.9430, 0.4113,  
0.2850

311.8877, 0.3358,

 1.6417, 0.4438,

0.3188

0.2703

370.4163, 0.3345,  
0.3194

0.3855, 0.5634,  
0.2182

0.0000, 0.0000,  
0.0000

63.0757, 0.3520,  
0.3116

63.0757, 0.3520,  
0.3116

52.0395, 0.3742,  
0.3043

76.1625, 0.3338,  
0.3188

42.9412, 0.4011,  
0.2974

91.3880, 0.3191,  
0.3257

35.6702, 0.4329,  
0.2915

99.9983, 0.3127,  
0.3290

30.1016, 0.4689,  
0.2878

■ 26.0940, 0.5075,  
0.2873

■ 23.4836, 0.5455,  
0.2910

■ 22.0687, 0.5788,  
0.2991

■ 21.6724, 0.5927,  
0.3039

# Harmonies

## Analogous

The Analogous color harmony consists of three colors that are next to each other on the color wheel.



63.0757, 0.3210, 0.2902



63.0757, 0.3520, 0.3116



63.0757, 0.3725, 0.3378

# Triad

The Triadic color harmony groups three colors that are evenly spaced from another and form a triangle on the color wheel.



63.0757, 0.3520, 0.3116



63.0757, 0.3342, 0.3860



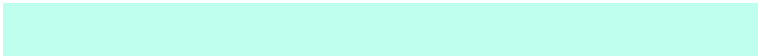
63.0757, 0.2532, 0.2906

# Complementary

The Complementary color scheme is a pair of colors which are on the opposite of each other on the color wheel.



63.0757, 0.3520, 0.3116



88.7649, 0.2843, 0.3472

# Split Complementary

Split-complementary colors differ from the complementary color scheme. The scheme consists of three colors, the original color and two neighbors of the complement color.



63.0757, 0.2563, 0.3153



63.0757, 0.3520, 0.3116



63.0757, 0.3021, 0.3730

# Square

The Square scheme is like the rectangle color scheme, but the four colors are evenly spaced on the color wheel.



63.0757, 0.3520, 0.3116



63.0757, 0.3615, 0.3816



63.0757, 0.2739, 0.3461



63.0757, 0.2648, 0.2776



# Rectangle

The Rectangle color scheme consists of four colors that form a rectangle on the color wheel.



63.0757, 0.3520, 0.3116



63.0757, 0.3768, 0.3553



63.0757, 0.2739, 0.3461



63.0757, 0.2525, 0.2977

# Sweetspot

The Sweet Spot groups the original color and five complimentary colors.



63.0786, 0.3520, 0.3116



86.7402, 0.3231, 0.3237



62.6504, 0.3028, 0.2638



18.0663, 0.3252, 0.3227



0.0000, 0.0000, 0.0000



21.4041, 0.3127, 0.3290



# Same Dimension

The Same Dimension uses a secret algorithm to generate beautiful new colors.



63.0786, 0.3520, 0.3116



57.4153, 0.3624, 0.3080



69.1336, 0.3623, 0.3446



18.0663, 0.3252, 0.3227



11.3461, 0.5886, 0.3016



1.1219, 0.5568, 0.2841



# Inverse Universe

The Inverse Universe completely reimagines the original color for something new.



63.0786, 0.3520, 0.3116



57.4153, 0.3624, 0.3080



80.6539, 0.2743, 0.3128



18.0663, 0.3252, 0.3227



11.3461, 0.5886, 0.3016



1.1219, 0.5568, 0.2841



# Previews

## White Background



This preview shows how the Yxy color 63.0757, 0.3520, 0.3116 looks on a white background.

## Color Contrast Check

Large Text (above 18pt) WCAG AA × Fail

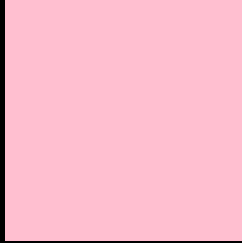
Any Text WCAG AA × Fail

Large Text (above 18pt) WCAG AAA × Fail

Any Text WCAG AAA × Fail



# Black Background



This preview shows how the Yxy color 63.0757, 0.3520, 0.3116 looks on a black background.

## Color Contrast Check

Large Text (above 18pt) WCAG AA ✓ Pass

Any Text WCAG AA ✓ Pass

Large Text (above 18pt) WCAG AAA ✓ Pass

Any Text WCAG AAA ✓ Pass

If you want to check with other color combinations, try the [Color Contrast Checker](#).

**Yxy 63.0757, 0.3520, 0.3116**

## **Background**



This preview shows how black text looks on a background with the Yxy color 63.0757, 0.3520, 0.3116.



This preview shows how white text looks on a background with the Yxy color 63.0757, 0.3520, 0.3116.

# Color Blindness Simulation

Color vision deficiency is a very complex topic, and I could not describe the different causes any better than Wikipedia does, so if you want to learn more, you should check out their [article about color blindness](#).

## Dichromacy



### Original Color

63.0757, 0.3520, 0.3116

### Protanopia

63.1907, 0.3073, 0.3176

### Deuteranopia

63.3553, 0.3309, 0.3247



## Tritanopia

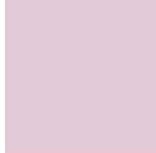
62.9778, 0.3537, 0.3136

# Trichromacy



## Original Color

63.0757, 0.3520, 0.3116



## Protanomaly

62.7971, 0.3227, 0.3147



## Deuteranomaly

63.0703, 0.3378, 0.3194



## Tritanomaly

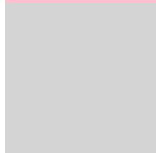
63.0266, 0.3528, 0.3126

# Monochromacy



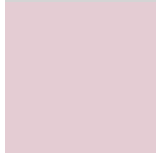
## Original Color

63.0757, 0.3520, 0.3116



## Achromatopsia

65.8375, 0.3127, 0.3290



## Achromatomaly

64.3829, 0.3262, 0.3214

# CSS Examples

## Text

The CSS property to change the color of the text to Yxy 63.0757, 0.3520, 0.3116 is called "color". The color property can be set on classes, ids or directly on the HTML element.

This example shows how text in the color `rgb(255, 191, 208)` looks like.

```
.text, #text, p{  
    color:rgb(255, 191, 208)  
}
```

If you want to add a text shadow in that color use the text-shadow property, you can generate a text shadow directly with our [CSS Text Shadow Generator](#).

Here you see how black text with a 4 pixel rgb(255, 191, 208) colored shadow looks like.

```
.shadow{ text-shadow: 4px 4px 2px rgb(255, 191, 208) }
```

## Border

The CSS property to change the border of an element to Yxy 63.0757, 0.3520, 0.3116 is called "border". The border property can be set on classes, ids or directly on the HTML element.

This example shows the color as border, it can be applied via the CSS property "border" or "border-color".

```
.border, #border, table{ border:4px solid rgb(255, 191, 208) }
```

If only the border color should be changed use the property `border-color`.

```
.border{ border-color:rgb(255, 191, 208) }
```

If you want to add a box shadow in that color use:

Here you see how a box with a 4 pixel `rgb(255, 191, 208)` colored shadow looks like.

```
.boxshadow{ -moz-box-shadow:4px 4px 4px  
4px rgb(255, 191, 208); -webkit-box-  
shadow:4px 4px 4px 4px rgb(255, 191, 208);  
box-shadow:4px 4px 4px 4px rgb(255, 191,  
208) }
```



# Background

The CSS property to change the background color of an element to Yxy 63.0757, 0.3520, 0.3116 is called "background". The background property can be set on classes, ids or directly on the HTML element.

```
.background, #background, body{  
background: rgb(255, 191, 208) }
```

If only the background color should be changed can be used:

```
.background{ background-color: rgb(255,  
191, 208) }
```

This example shows the color as background, it is applied via the CSS property "background".

To optimize and compress your CSS code, you can use our [online CSS compressor and optimizer](#) based on csstidy. If you want to create a linear or radial gradient as background or border, check our [CSS Gradient Generator](#).

Hey! You found this booklet interesting? Support Converting Colors with the new Membership Option!

The pro membership hides all ads, plus gives you double the colors in the color bucket, and more awesome pro features!

**[Learn more, Memberships starting at \\$2.50/m!](#)**

**Follow me  
on Twitter!**

@ConvertingColor