

# Converting Colors

Yxy(63.3167, 0.3307, 0.3403)

Have a look what the booklet for  
Yxy(63.3167, 0.3307, 0.3403)  
contains.

<b>Yxy(63.3438, 0.3307, 0.3404)</b> .....	3
<b>Conversions</b> .....	4
<b>Details</b> .....	6
<b>Harmonies</b> .....	12
<b>Previews</b> .....	24
<b>Color Blindness Simulation</b> .....	27
<b>CSS Examples</b> .....	30

# Color

**Yxy(63.3438, 0.3307, 0.3404)**

# Conversions

## Conversions Part 1

<b>Format</b>	<b>Color</b>
Hex	DCCEC4
RGB	220, 206, 196
RGB Percent	86%, 81%, 77%
CMY	0.1374, 0.1921, 0.2314
CMYK	0.00, 0.06, 0.11, 0.14
HSL	25°, 25%, 82%
HSV	25°, 11%, 86%
XYZ	61.5388, 63.3438, 61.2038
YIQ	209.0460, 11.5540, -0.1420

# Conversions

## Conversions Part 2

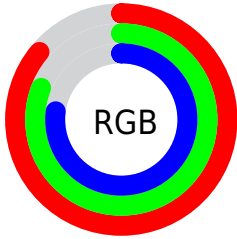
Format	Color
R <sub>Y</sub> B	220, 213, 196
Decimal	14470852
CIE Lab	83.62, 3.14, 6.71
CIE LCh	84, 7.407, 64.877
Yxy	63.3438, 0.3307, 0.3404
Android (android.graphics.Color)	4292660932 (0xFFDCCEC4)
YUV	209.0460, -6.4317, 9.6067
Hunter-Lab	79.5888, -1.2627, 10.1182

# Details

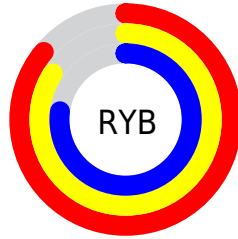
The Yxy color **63.3438, 0.3307, 0.3404** is a light color, and the websafe version is hex **CCCCCC**. A complement of this color would be **62.9562, 0.2959, 0.3173**, and the grayscale version is **63.8269, 0.3127, 0.3290**.

A 20% lighter version of the original color is **99.8718, 0.3139, 0.3309**, and **32.4088, 0.3357, 0.3440** is the 20% darker color. If you saturate the color by 10%, you get **56.5069, 0.3500, 0.3515**, and if you desaturate by 10%, it is **70.8343, 0.3141, 0.3299**.

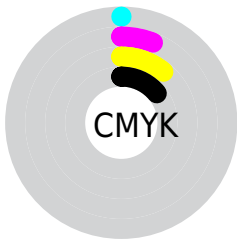
# Distribution



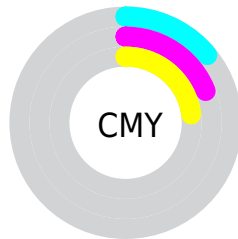
- Red (86%)
- Green (81%)
- Blue (77%)



- Red (86%)
- Yellow (84%)
- Blue (77%)



- Cyan (0%)
- Magenta (6%)
- Yellow (11%)
- Black (14%)



- Cyan (14%)
- Magenta (19%)
- Yellow (23%)

# Brightness & Saturation Gradients

These gradients show how the Yxy color 63.3438, 0.3307, 0.3404 changes by changing the brightness by 10 percent. The first figure shows a shift by +10% for each color and the second figure -10%.

Similar to the brightness gradients but the following saturation gradients show a change of the Yxy color 63.3438, 0.3307, 0.3404 by changing the saturation by 10% instead.



■ 63.3438, 0.3307,  
0.3404

■ 63.3438, 0.3307,  
0.3404

436.8161, 0.3221,  
0.3350

■ 46.1194, 0.3327,  
0.3416

109.6654, 0.3277,  
0.3385

■ 32.3400, 0.3352,  
0.3432

139.5313, 0.3265,  
0.3378

■ 21.6214, 0.3385,  
0.3452

174.3799, 0.3255,  
0.3372

■ 13.5790, 0.3429,  
0.3478

214.5955, 0.3247,  
0.3366

■ 7.8284, 0.3490,  
0.3514

260.5625, 0.3239,  
0.3362

■ 3.9853, 0.3582,  
0.3568

312.6654, 0.3233,

■ 1.6654, 0.3737,

0.3357

0.3655

371.2885, 0.3227,  
0.3354

0.4011, 0.5331,  
0.4669

0.0000, 0.0000,  
0.0000

63.3438, 0.3307,  
0.3404

63.3438, 0.3307,  
0.3404

56.5069, 0.3500,  
0.3515

70.8343, 0.3141,  
0.3299

50.2969, 0.3722,  
0.3630

78.9873, 0.2998,  
0.3201

44.6975, 0.3975,  
0.3743

87.3647, 0.2914,  
0.3181

39.6886, 0.4257,  
0.3848

93.9482, 0.2917,  
0.3289

■ 35.2485, 0.4562,  
0.3935

■ 31.3542, 0.4877,  
0.3991

■ 27.9808, 0.5183,  
0.4004

■ 25.1003, 0.5455,  
0.3963

■ 22.8723, 0.5663,  
0.3886

# Harmonies

## Analogous

The Analogous color harmony consists of three colors that are next to each other on the color wheel.



63.3438, 0.3303, 0.3332



63.3438, 0.3307, 0.3404



63.3438, 0.3262, 0.3447

# Triad

The Triadic color harmony groups three colors that are evenly spaced from another and form a triangle on the color wheel.



63.3438, 0.3307, 0.3404



63.3438, 0.3005, 0.3330



63.3438, 0.3071, 0.3137

# Complementary

The Complementary color scheme is a pair of colors which are on the opposite of each other on the color wheel.



63.3438, 0.3307, 0.3404



62.9562, 0.2959, 0.3173

# Split Complementary

Split-complementary colors differ from the complementary color scheme. The scheme consists of three colors, the original color and two neighbors of the complement color.



63.3438, 0.2993, 0.3135



63.3438, 0.3307, 0.3404



63.3438, 0.2955, 0.3245

# Square

The Square scheme is like the rectangle color scheme, but the four colors are evenly spaced on the color wheel.



63.3438, 0.3307, 0.3404



63.3438, 0.3087, 0.3405



63.3438, 0.2950, 0.3173



63.3438, 0.3166, 0.3179



# Rectangle

The Rectangle color scheme consists of four colors that form a rectangle on the color wheel.



63.3438, 0.3307, 0.3404



63.3438, 0.3211, 0.3453



63.3438, 0.2950, 0.3173



63.3438, 0.3042, 0.3132

# Sweetspot

The Sweet Spot groups the original color and five complimentary colors.



63.3466, 0.3307, 0.3404



96.7117, 0.3174, 0.3321



59.3374, 0.3214, 0.3133



20.5152, 0.3187, 0.3329



0.0000, 0.0000, 0.0000



21.4041, 0.3127, 0.3290

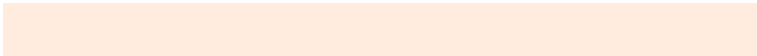


# Same Dimension

The Same Dimension uses a secret algorithm to generate beautiful new colors.



63.3466, 0.3307, 0.3404



86.3582, 0.3347, 0.3428



69.3133, 0.3291, 0.3536



13.9426, 0.3281, 0.3388



13.6391, 0.5636, 0.3907



1.0514, 0.5346, 0.4137

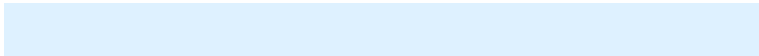


# Inverse Universe

The Inverse Universe completely reimagines the original color for something new.



62.9562, 0.2959, 0.3173



85.7109, 0.2924, 0.3148



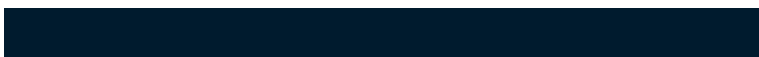
57.2841, 0.2957, 0.3032



13.8687, 0.2982, 0.3190



12.3064, 0.1851, 0.1865

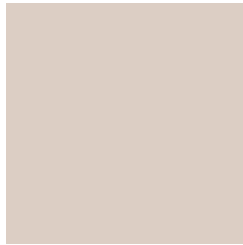


0.9662, 0.1922, 0.2120



# Previews

## White Background



This preview shows how the Yxy color 63.3438, 0.3307, 0.3404 looks on a white background.

## Color Contrast Check

Large Text (above 18pt) WCAG AA × Fail

Any Text WCAG AA × Fail

Large Text (above 18pt) WCAG AAA × Fail

Any Text WCAG AAA × Fail



# Black Background



This preview shows how the Yxy color 63.3438, 0.3307, 0.3404 looks on a black background.

## Color Contrast Check

Large Text (above 18pt) WCAG AA ✓ Pass

Any Text WCAG AA ✓ Pass

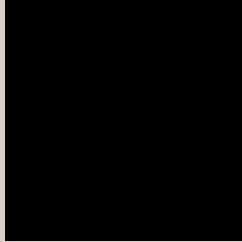
Large Text (above 18pt) WCAG AAA ✓ Pass

Any Text WCAG AAA ✓ Pass

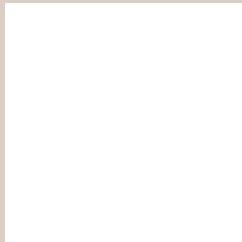
If you want to check with other color combinations, try the [Color Contrast Checker](#).

**Yxy 63.3438, 0.3307, 0.3404**

## Background



This preview shows how black text looks on a background with the Yxy color 63.3438, 0.3307, 0.3404.

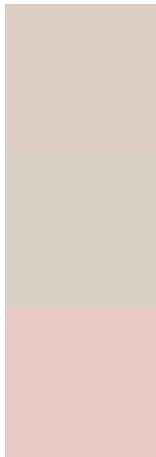


This preview shows how white text looks on a background with the Yxy color 63.3438, 0.3307, 0.3404.

# Color Blindness Simulation

Color vision deficiency is a very complex topic, and I could not describe the different causes any better than Wikipedia does, so if you want to learn more, you should check out their [article about color blindness](#).

## Dichromacy



### Original Color

63.3438, 0.3307, 0.3404

### Protanopia

63.5900, 0.3259, 0.3416

### Deuteranopia

63.1281, 0.3411, 0.3335



## Tritanopia

63.5143, 0.3166, 0.3114

# Trichromacy



## Original Color

63.3438, 0.3307, 0.3404

## Protanomaly

63.4086, 0.3275, 0.3404

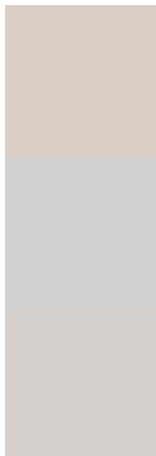
## Deuteranomaly

63.2371, 0.3368, 0.3357

## Tritanomaly

63.4185, 0.3215, 0.3212

# Monochromacy



## Original Color

63.3438, 0.3307, 0.3404

## Achromatopsia

63.7597, 0.3127, 0.3290

## Achromatomaly

63.6175, 0.3193, 0.3336

# CSS Examples

## Text

The CSS property to change the color of the text to Yxy 63.3438, 0.3307, 0.3404 is called "color". The color property can be set on classes, ids or directly on the HTML element.

This example shows how text in the color `rgb(220, 206, 196)` looks like.

```
.text, #text, p{  
    color:rgb(220, 206, 196)  
}
```

If you want to add a text shadow in that color use the text-shadow property, you can generate a text shadow directly with our [CSS Text Shadow Generator](#).

Here you see how black text with a 4 pixel rgb(220, 206, 196) colored shadow looks like.

```
.shadow{ text-shadow: 4px 4px 2px rgb(220, 206, 196) }
```

## Border

The CSS property to change the border of an element to Yxy 63.3438, 0.3307, 0.3404 is called "border". The border property can be set on classes, ids or directly on the HTML element.

This example shows the color as border, it can be applied via the CSS property "border" or "border-color".

```
.border, #border, table{ border:4px solid rgb(220, 206, 196) }
```

If only the border color should be changed use the property `border-color`.

```
.border{ border-color:rgb(220, 206, 196) }
```

If you want to add a box shadow in that color use:

Here you see how a box with a 4 pixel `rgb(220, 206, 196)` colored shadow looks like.

```
.boxshadow{ -moz-box-shadow:4px 4px 4px  
4px rgb(220, 206, 196); -webkit-box-  
shadow:4px 4px 4px 4px rgb(220, 206, 196);  
box-shadow:4px 4px 4px 4px rgb(220, 206,  
196) }
```



# Background

The CSS property to change the background color of an element to Yxy 63.3438, 0.3307, 0.3404 is called "background". The background property can be set on classes, ids or directly on the HTML element.

```
.background, #background, body{  
background: rgb(220, 206, 196) }
```

If only the background color should be changed can be used:

```
.background{ background-color: rgb(220,  
206, 196) }
```

This example shows the color as background, it is applied via the CSS property "background".

To optimize and compress your CSS code, you can use our [online CSS compressor and optimizer](#) based on csstidy. If you want to create a linear or radial gradient as background or border, check our [CSS Gradient Generator](#).

Hey! You found this booklet interesting? Support Converting Colors with the new Membership Option!

The pro membership hides all ads, plus gives you double the colors in the color bucket, and more awesome pro features!

**[Learn more, Memberships starting at \\$2.50/m!](#)**

**Follow me  
on Twitter!**

@ConvertingColor