

Converting Colors

$Yxy(63.3235, 0.3228, 0.3147)$

Have a look what the booklet for
Yxy(63.3235, 0.3228, 0.3147)
contains.

Yxy(63.4782, 0.3227, 0.3148)	3
Conversions	4
Details	6
Harmonies	12
Previews	24
Color Blindness Simulation	27
CSS Examples	30

Color

Yxy(63.4782, 0.3227, 0.3148)

Conversions

Conversions Part 1

Format	Color
Hex	E3CAD7
RGB	227, 202, 215
RGB Percent	89%, 79%, 84%
CMY	0.1097, 0.2079, 0.1570
CMYK	0.00, 0.11, 0.05, 0.11
HSL	329°, 31%, 84%
HSV	329°, 11%, 89%
XYZ	65.0712, 63.4782, 73.0967
YIQ	210.9570, 10.7270, 9.3430

Conversions

Conversions Part 2

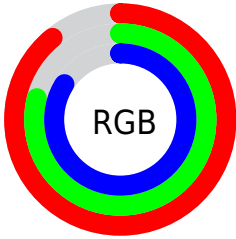
Format	Color
R _Y B	227, 202, 215
Decimal	14928599
CIE Lab	83.69, 10.96, -3.24
CIE LCh	84, 11.432, 343.548
Yxy	63.4782, 0.3227, 0.3148
Android (android.graphics.Color)	4293118679 (0xFFE3CAD7)
YUV	210.9570, 1.9932, 14.0697
Hunter-Lab	79.6732, 6.3575, 1.3752

Details

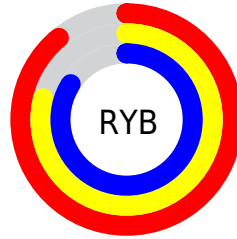
The Yxy color $63.4782, 0.3227, 0.3148$ is a light color, and the websafe version is hex `CCCCCC`. A complement of this color would be $72.3733, 0.3038, 0.3436$, and the grayscale version is $65.0962, 0.3127, 0.3290$.

A 20% lighter version of the original color is $100.0000, 0.3127, 0.3290$, and $32.4885, 0.3259, 0.3119$ is the 20% darker color. If you saturate the color by 10%, you get $53.0558, 0.3337, 0.3012$, and if you desaturate by 10%, it is $75.5110, 0.3136, 0.3277$.

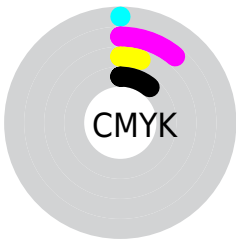
Distribution



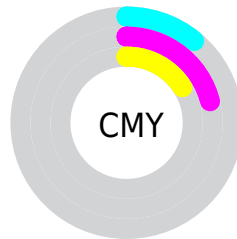
- Red (89%)
- Green (79%)
- Blue (84%)



- Red (89%)
- Yellow (79%)
- Blue (84%)



- Cyan (0%)
- Magenta (11%)
- Yellow (5%)
- Black (11%)



- Cyan (11%)
- Magenta (21%)
- Yellow (16%)

Brightness & Saturation Gradients

These gradients show how the Yxy color 63.4782, 0.3227, 0.3148 changes by changing the brightness by 10 percent. The first figure shows a shift by +10% for each color and the second figure -10%.

Similar to the brightness gradients but the following saturation gradients show a change of the Yxy color 63.4782, 0.3227, 0.3148 by changing the saturation by 10% instead.

63.4782, 0.3227,
0.3148

63.4782, 0.3227,
0.3148

437.3029, 0.3180,
0.3215

46.2282, 0.3238,
0.3133

109.8591, 0.3211,
0.3171

32.4259, 0.3252,
0.3113

139.7588, 0.3204,
0.3180

21.6870, 0.3269,
0.3089

174.6438, 0.3199,
0.3188

13.6271, 0.3292,
0.3056

214.8986, 0.3194,
0.3195

7.8618, 0.3324,
0.3011

260.9075, 0.3190,
0.3201

4.0066, 0.3372,
0.2945

313.0549, 0.3186,

1.6773, 0.3450,

0.3206

0.2837

371.7252, 0.3183,
0.3211

0.4089, 0.3779,
0.2354

0.0000, 0.0000,
0.0000

63.4782, 0.3227,
0.3148

63.4782, 0.3227,
0.3148

53.0558, 0.3337,
0.3012

75.5110, 0.3136,
0.3277

44.1667, 0.3469,
0.2873

89.2107, 0.3060,
0.3398

36.7397, 0.3624,
0.2736

94.6210, 0.2998,
0.3362

30.6947, 0.3804,
0.2608

95.0773, 0.2958,
0.3290

■ 25.9437, 0.4009,
0.2501

■ 22.3888, 0.4233,
0.2425

■ 19.9175, 0.4469,
0.2394

■ 18.3959, 0.4705,
0.2417

■ 17.6380, 0.4909,
0.2478

Harmonies

Analogous

The Analogous color harmony consists of three colors that are next to each other on the color wheel.



63.4782, 0.3081, 0.3070



63.4782, 0.3227, 0.3148



63.4782, 0.3348, 0.3263

Triad

The Triadic color harmony groups three colors that are evenly spaced from another and form a triangle on the color wheel.



63.4782, 0.3227, 0.3148



63.4782, 0.3303, 0.3541



63.4782, 0.2853, 0.3183

Complementary

The Complementary color scheme is a pair of colors which are on the opposite of each other on the color wheel.



63.4782, 0.3227, 0.3148



72.3733, 0.3038, 0.3436

Split Complementary

Split-complementary colors differ from the complementary color scheme. The scheme consists of three colors, the original color and two neighbors of the complement color.



63.4782, 0.2910, 0.3312



63.4782, 0.3227, 0.3148



63.4782, 0.3168, 0.3524

Square

The Square scheme is like the rectangle color scheme, but the four colors are evenly spaced on the color wheel.



63.4782, 0.3227, 0.3148



63.4782, 0.3392, 0.3490



63.4782, 0.3025, 0.3439



63.4782, 0.2868, 0.3087

Rectangle

The Rectangle color scheme consists of four colors that form a rectangle on the color wheel.



63.4782, 0.3227, 0.3148



63.4782, 0.3397, 0.3346



63.4782, 0.3025, 0.3439



63.4782, 0.2865, 0.3224

Sweetspot

The Sweet Spot groups the original color and five complimentary colors.



63.4810, 0.3227, 0.3148



94.9808, 0.3152, 0.3252



62.0352, 0.3040, 0.3011



20.0498, 0.3159, 0.3242



0.0000, 0.0000, 0.0000



21.4041, 0.3127, 0.3290

Same Dimension

The Same Dimension uses a secret algorithm to generate beautiful new colors.



63.4810, 0.3227, 0.3148



79.6569, 0.3248, 0.3121



62.8795, 0.3317, 0.3281



14.4922, 0.3211, 0.3169



10.3063, 0.4876, 0.2460



0.7804, 0.4567, 0.2289

Inverse Universe

The Inverse Universe completely reimagines the original color for something new.



63.4810, 0.3227, 0.3148



79.6569, 0.3248, 0.3121



73.0176, 0.2963, 0.3299



14.4922, 0.3211, 0.3169



10.3063, 0.4876, 0.2460



0.7804, 0.4567, 0.2289

Previews

White Background



This preview shows how the Yxy color 63.4782, 0.3227, 0.3148 looks on a white background.

Color Contrast Check

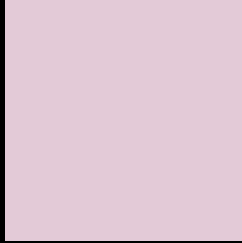
Large Text (above 18pt) WCAG AA × Fail

Any Text WCAG AA × Fail

Large Text (above 18pt) WCAG AAA × Fail

Any Text WCAG AAA × Fail

Black Background



This preview shows how the Yxy color 63.4782, 0.3227, 0.3148 looks on a black background.

Color Contrast Check

Large Text (above 18pt) WCAG AA ✓ Pass

Any Text WCAG AA ✓ Pass

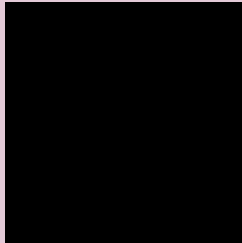
Large Text (above 18pt) WCAG AAA ✓ Pass

Any Text WCAG AAA ✓ Pass

If you want to check with other color combinations, try the [Color Contrast Checker](#).

Yxy 63.4782, 0.3227, 0.3148

Background



This preview shows how black text looks on a background with the Yxy color 63.4782, 0.3227, 0.3148.



This preview shows how white text looks on a background with the Yxy color 63.4782, 0.3227, 0.3148.

Color Blindness Simulation

Color vision deficiency is a very complex topic, and I could not describe the different causes any better than Wikipedia does, so if you want to learn more, you should check out their [article about color blindness](#).

Dichromacy



Original Color

63.4782, 0.3227, 0.3148

Protanopia

63.8753, 0.3073, 0.3177

Deuteranopia

63.3161, 0.3219, 0.3147



Tritanopia

63.5817, 0.3212, 0.3126

Trichromacy



Original Color

63.4782, 0.3227, 0.3148

Protanomaly

63.7513, 0.3125, 0.3167

Deuteranomaly

63.3161, 0.3219, 0.3147

Tritanomaly

63.5298, 0.3219, 0.3137

Monochromacy



Original Color

63.4782, 0.3227, 0.3148

Achromatopsia

65.1406, 0.3127, 0.3290

Achromatomaly

64.6169, 0.3167, 0.3245

CSS Examples

Text

The CSS property to change the color of the text to Yxy 63.4782, 0.3227, 0.3148 is called "color". The color property can be set on classes, ids or directly on the HTML element.

This example shows how text in the color `rgb(227, 202, 215)` looks like.

```
.text, #text, p{  
    color:rgb(227, 202, 215)  
}
```

If you want to add a text shadow in that color use the text-shadow property, you can generate a text shadow directly with our [CSS Text Shadow Generator](#).

Here you see how black text with a 4 pixel rgb(227, 202, 215) colored shadow looks like.

```
.shadow{ text-shadow: 4px 4px 2px rgb(227, 202, 215) }
```

Border

The CSS property to change the border of an element to Yxy 63.4782, 0.3227, 0.3148 is called "border". The border property can be set on classes, ids or directly on the HTML element.

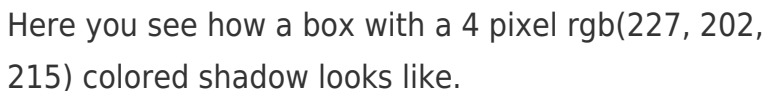
This example shows the color as border, it can be applied via the CSS property "border" or "border-color".

```
.border, #border, table{ border:4px solid rgb(227, 202, 215) }
```

If only the border color should be changed use the property `border-color`.

```
.border{ border-color:rgb(227, 202, 215) }
```

If you want to add a box shadow in that color use:



Here you see how a box with a 4 pixel `rgb(227, 202, 215)` colored shadow looks like.

```
.boxshadow{ -moz-box-shadow:4px 4px 4px  
4px rgb(227, 202, 215); -webkit-box-  
shadow:4px 4px 4px 4px rgb(227, 202, 215);  
box-shadow:4px 4px 4px 4px rgb(227, 202,  
215) }
```


Background

The CSS property to change the background color of an element to Yxy 63.4782, 0.3227, 0.3148 is called "background". The background property can be set on classes, ids or directly on the HTML element.

```
.background, #background, body{  
background: rgb(227, 202, 215) }
```

If only the background color should be changed can be used:

```
.background{ background-color: rgb(227,  
202, 215) }
```

This example shows the color as background, it is applied via the CSS property "background".

To optimize and compress your CSS code, you can use our [online CSS compressor and optimizer](#) based on csstidy. If you want to create a linear or radial gradient as background or border, check our [CSS Gradient Generator](#).

Hey! You found this booklet interesting? Support Converting Colors with the new Membership Option!

The pro membership hides all ads, plus gives you double the colors in the color bucket, and more awesome pro features!

[Learn more, Memberships starting at \\$2.50/m!](#)

**Follow me
on Twitter!**

@ConvertingColor