

Converting Colors

$Yxy(63.3481, 0.3253, 0.3382)$

Have a look what the booklet for
Yxy(63.3481, 0.3253, 0.3382)
contains.

Yxy(63.3481, 0.3253, 0.3382)	3
<i>Conversions</i>	4
<i>Details</i>	6
<i>Harmonies</i>	12
<i>Previews</i>	24
<i>Color Blindness Simulation</i>	27
<i>CSS Examples</i>	30

Color

Yxy(63.3481, 0.3253, 0.3382)

Conversions

Conversions Part 1

Format	Color
Hex	D8CFC7
RGB	216, 207, 199
RGB Percent	85%, 81%, 78%
CMY	0.1530, 0.1882, 0.2197
CMYK	0.00, 0.04, 0.08, 0.15
HSL	28°, 18%, 81%
HSV	28°, 8%, 85%
XYZ	60.9318, 63.3481, 63.0297
YIQ	208.7790, 7.9320, -0.5800

Conversions

Conversions Part 2

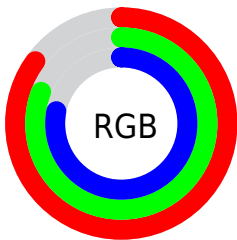
Format	Color
R _Y B	216, 214, 199
Decimal	14208967
CIE Lab	83.63, 1.71, 5.08
CIE LCh	84, 5.364, 71.431
Yxy	63.3481, 0.3253, 0.3382
Android (android.graphics.Color)	4292399047 (0xFFD8CFC7)
YUV	208.7790, -4.8210, 6.3328
Hunter-Lab	79.5915, -2.6333, 8.7615

Details

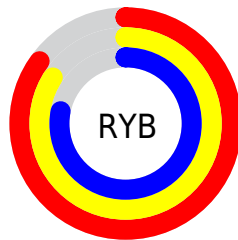
The Yxy color $63.3481, 0.3253, 0.3382$ is a light color, and the websafe version is hex `CCCCCC`. A complement of this color would be $62.1713, 0.3006, 0.3196$, and the grayscale version is $63.6355, 0.3127, 0.3290$.

A 20% lighter version of the original color is $100.0000, 0.3127, 0.3290$, and $32.4039, 0.3284, 0.3411$ is the 20% darker color. If you saturate the color by 10%, you get $57.1014, 0.3434, 0.3505$, and if you desaturate by 10%, it is $70.1400, 0.3096, 0.3266$.

Distribution



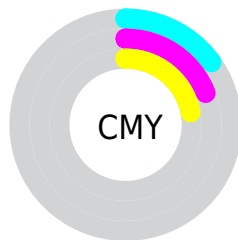
- Red (85%)
- Green (81%)
- Blue (78%)



- Red (85%)
- Yellow (84%)
- Blue (78%)



- Cyan (0%)
- Magenta (4%)
- Yellow (8%)
- Black (15%)



- Cyan (15%)
- Magenta (19%)
- Yellow (22%)

Brightness & Saturation Gradients

These gradients show how the Yxy color 63.3481, 0.3253, 0.3382 changes by changing the brightness by 10 percent. The first figure shows a shift by +10% for each color and the second figure -10%.

Similar to the brightness gradients but the following saturation gradients show a change of the Yxy color 63.3481, 0.3253, 0.3382 by changing the saturation by 10% instead.

■ 63.3481, 0.3253,
0.3382

■ 63.3481, 0.3253,
0.3382

436.8317, 0.3193,
0.3339

■ 46.1229, 0.3267,
0.3392

109.6716, 0.3232,
0.3367

■ 32.3428, 0.3285,
0.3405

139.5386, 0.3224,
0.3361

■ 21.6235, 0.3307,
0.3421

174.3883, 0.3217,
0.3356

■ 13.5805, 0.3338,
0.3443

214.6052, 0.3211,
0.3351

■ 7.8295, 0.3381,
0.3473

260.5736, 0.3206,
0.3348

■ 3.9860, 0.3445,
0.3518

312.6778, 0.3201,

■ 1.6657, 0.3553,

0.3344

0.3592

371.3024, 0.3197,
0.3341

0.4013, 0.4671,
0.4430

0.0000, 0.0000,
0.0000

63.3481, 0.3253,
0.3382

63.3481, 0.3253,
0.3382

57.1014, 0.3434,
0.3505

70.1400, 0.3096,
0.3266

51.3774, 0.3641,
0.3633

77.4825, 0.2959,
0.3158

46.1638, 0.3874,
0.3761

84.8141, 0.2889,
0.3147

41.4449, 0.4132,
0.3883

91.7673, 0.2893,
0.3264

■ 37.2038, 0.4411,
0.3990

■ 93.3351, 0.2894,
0.3289

■ 33.4227, 0.4699,
0.4070

■ 30.0821, 0.4982,
0.4109

■ 27.1603, 0.5240,
0.4096

■ 24.6307, 0.5457,
0.4031

Harmonies

Analogous

The Analogous color harmony consists of three colors that are next to each other on the color wheel.



63.3481, 0.3258, 0.3333



63.3481, 0.3253, 0.3382



63.3481, 0.3214, 0.3407

Triad

The Triadic color harmony groups three colors that are evenly spaced from another and form a triangle on the color wheel.



63.3481, 0.3253, 0.3382



63.3481, 0.3028, 0.3306



63.3481, 0.3101, 0.3183

Complementary

The Complementary color scheme is a pair of colors which are on the opposite of each other on the color wheel.



63.3481, 0.3253, 0.3382



62.1713, 0.3006, 0.3196

Split Complementary

Split-complementary colors differ from the complementary color scheme. The scheme consists of three colors, the original color and two neighbors of the complement color.



63.3481, 0.3040, 0.3175



63.3481, 0.3253, 0.3382



63.3481, 0.2998, 0.3245

Square

The Square scheme is like the rectangle color scheme, but the four colors are evenly spaced on the color wheel.



63.3481, 0.3253, 0.3382



63.3481, 0.3084, 0.3363



63.3481, 0.3003, 0.3197



63.3481, 0.3170, 0.3219

Rectangle

The Rectangle color scheme consists of four colors that form a rectangle on the color wheel.



63.3481, 0.3253, 0.3382



63.3481, 0.3174, 0.3406



63.3481, 0.3003, 0.3197



63.3481, 0.3079, 0.3177

Sweetspot

The Sweet Spot groups the original color and five complimentary colors.



63.3509, 0.3253, 0.3382



97.9736, 0.3158, 0.3313



59.9841, 0.3194, 0.3187



20.9917, 0.3157, 0.3312



0.0000, 0.0000, 0.0000



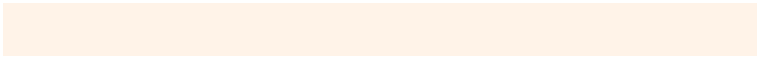
21.4041, 0.3127, 0.3290

Same Dimension

The Same Dimension uses a secret algorithm to generate beautiful new colors.



63.3509, 0.3253, 0.3382



91.1363, 0.3274, 0.3397



67.5260, 0.3244, 0.3476



13.3803, 0.3279, 0.3401



14.5030, 0.5477, 0.4033



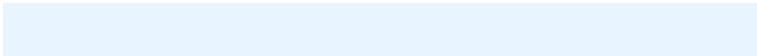
1.0398, 0.5198, 0.4255

Inverse Universe

The Inverse Universe completely reimagines the original color for something new.



62.1713, 0.3006, 0.3196



89.1699, 0.2987, 0.3181



58.1890, 0.3006, 0.3097



13.0807, 0.2982, 0.3177



10.2476, 0.1799, 0.1677



0.7833, 0.1883, 0.1978

Previews

White Background



This preview shows how the Yxy color 63.3481, 0.3253, 0.3382 looks on a white background.

Color Contrast Check

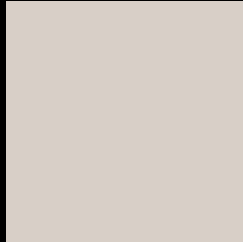
Large Text (above 18pt) WCAG AA × Fail

Any Text WCAG AA × Fail

Large Text (above 18pt) WCAG AAA × Fail

Any Text WCAG AAA × Fail

Black Background



This preview shows how the Yxy color 63.3481, 0.3253, 0.3382 looks on a black background.

Color Contrast Check

Large Text (above 18pt) WCAG AA ✓ Pass

Any Text WCAG AA ✓ Pass

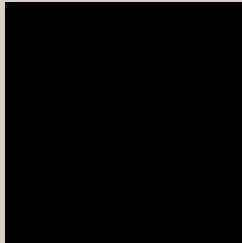
Large Text (above 18pt) WCAG AAA ✓ Pass

Any Text WCAG AAA ✓ Pass

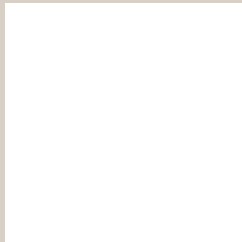
If you want to check with other color combinations, try the [Color Contrast Checker](#).

Yxy 63.3481, 0.3253, 0.3382

Background



This preview shows how black text looks on a background with the Yxy color 63.3481, 0.3253, 0.3382.

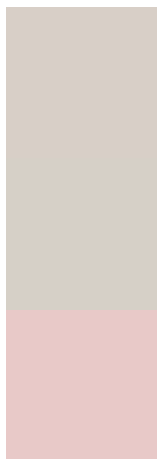


This preview shows how white text looks on a background with the Yxy color 63.3481, 0.3253, 0.3382.

Color Blindness Simulation

Color vision deficiency is a very complex topic, and I could not describe the different causes any better than Wikipedia does, so if you want to learn more, you should check out their [article about color blindness](#).

Dichromacy



Original Color

63.3481, 0.3253, 0.3382

Protanopia

63.5314, 0.3236, 0.3393

Deuteranopia

63.0992, 0.3380, 0.3302



Tritanopia

63.4131, 0.3128, 0.3113

Trichromacy



Original Color

63.3481, 0.3253, 0.3382

Protanomaly

63.6823, 0.3244, 0.3393

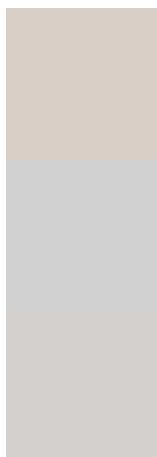
Deuteranomaly

63.0508, 0.3329, 0.3324

Tritanomaly

63.3215, 0.3177, 0.3212

Monochromacy



Original Color

63.3481, 0.3253, 0.3382

Achromatopsia

63.7597, 0.3127, 0.3290

Achromatomaly

63.5166, 0.3178, 0.3324

CSS Examples

Text

The CSS property to change the color of the text to Yxy 63.3481, 0.3253, 0.3382 is called "color". The color property can be set on classes, ids or directly on the HTML element.

This example shows how text in the color `rgb(216, 207, 199)` looks like.

```
.text, #text, p{  
    color:rgb(216, 207, 199)  
}
```

If you want to add a text shadow in that color use the text-shadow property, you can generate a text shadow directly with our [CSS Text Shadow Generator](#).

Here you see how black text with a 4 pixel rgb(216, 207, 199) colored shadow looks like.

```
.shadow{ text-shadow: 4px 4px 2px rgb(216, 207, 199) }
```

Border

The CSS property to change the border of an element to Yxy 63.3481, 0.3253, 0.3382 is called "border". The border property can be set on classes, ids or directly on the HTML element.

This example shows the color as border, it can be applied via the CSS property "border" or "border-color".

```
.border, #border, table{ border:4px solid rgb(216, 207, 199) }
```

If only the border color should be changed use the property `border-color`.

```
.border{ border-color:rgb(216, 207, 199) }
```

If you want to add a box shadow in that color use:

Here you see how a box with a 4 pixel `rgb(216, 207, 199)` colored shadow looks like.

```
.boxshadow{ -moz-box-shadow:4px 4px 4px  
4px rgb(216, 207, 199); -webkit-box-  
shadow:4px 4px 4px 4px rgb(216, 207, 199);  
box-shadow:4px 4px 4px 4px rgb(216, 207,  
199) }
```


Background

The CSS property to change the background color of an element to Yxy 63.3481, 0.3253, 0.3382 is called "background". The background property can be set on classes, ids or directly on the HTML element.

```
.background, #background, body{  
background: rgb(216, 207, 199) }
```

If only the background color should be changed can be used:

```
.background{ background-color: rgb(216,  
207, 199) }
```

This example shows the color as background, it is applied via the CSS property "background".

To optimize and compress your CSS code, you can use our [online CSS compressor and optimizer](#) based on csstidy. If you want to create a linear or radial gradient as background or border, check our [CSS Gradient Generator](#).

Hey! You found this booklet interesting? Support Converting Colors with the new Membership Option!

The pro membership hides all ads, plus gives you double the colors in the color bucket, and more awesome pro features!

[Learn more, Memberships starting at \\$2.50/m!](#)

**Follow me
on Twitter!**

@ConvertingColor