

Converting Colors

$Yxy(63.3648, 0.3486, 0.3491)$

Have a look what the booklet for
Yxy(63.3648, 0.3486, 0.3491)
contains.

Yxy(63.2036, 0.3484, 0.3491)	3
Conversions	4
Details	6
Harmonies	12
Previews	24
Color Blindness Simulation	27
CSS Examples	30

Color

Yxy(63.2036, 0.3484, 0.3491)

Conversions

Conversions Part 1

Format	Color
Hex	E7CBB9
RGB	231, 203, 185
RGB Percent	91%, 80%, 73%
CMY	0.0940, 0.2040, 0.2746
CMYK	0.00, 0.12, 0.20, 0.09
HSL	23°, 49%, 82%
HSV	23°, 20%, 91%
XYZ	63.0769, 63.2036, 54.7668
YIQ	209.3200, 22.4660, 0.3380

Conversions

Conversions Part 2

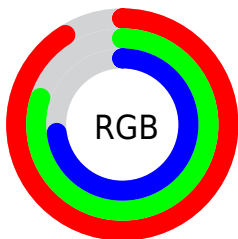
Format	Color
R_{YB}	231, 215, 185
Decimal	15190969
CIE _{Lab}	83.55, 7.04, 12.58
CIE _{LCh}	84, 14.415, 60.785
Yxy	63.2036, 0.3484, 0.3491
Android (android.graphics.Color)	4293381049 (0xFFE7CBB9)
YUV	209.3200, -11.9898, 19.0134
Hunter-Lab	79.5007, 2.4980, 14.8065

Details

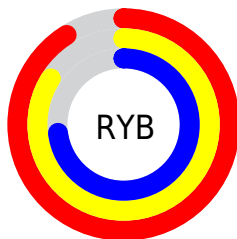
The Yxy color **63.2036, 0.3484, 0.3491** is a light color, and the websafe version is hex **FFCCCC**. A complement of this color would be **63.6930, 0.2816, 0.3080**, and the grayscale version is **64.0530, 0.3127, 0.3290**.

A 20% lighter version of the original color is **99.1309, 0.3209, 0.3425**, and **32.2748, 0.3573, 0.3539** is the 20% darker color. If you saturate the color by 10%, you get **55.9612, 0.3708, 0.3598**, and if you desaturate by 10%, it is **71.2136, 0.3291, 0.3387**.

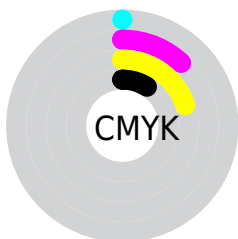
Distribution



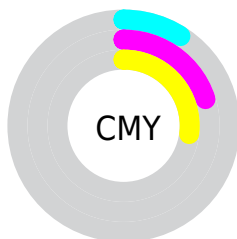
- Red (91%)
- Green (80%)
- Blue (73%)



- Red (91%)
- Yellow (84%)
- Blue (73%)



- Cyan (0%)
- Magenta (12%)
- Yellow (20%)
- Black (9%)





- Cyan (9%)
- Magenta (20%)
- Yellow (27%)

Brightness & Saturation Gradients


These gradients show how the Yxy color 63.2036, 0.3484, 0.3491 changes by changing the brightness by 10 percent. The first figure shows a shift by +10% for each color and the second figure -10%.


Similar to the brightness gradients but the following saturation gradients show a change of the Yxy color 63.2036, 0.3484, 0.3491 by changing the saturation by 10% instead.


 63.2036, 0.3484,
0.3491

 63.2036, 0.3484,
0.3491


436.3080, 0.3314,
0.3398

 46.0059, 0.3524,
0.3512


 109.4632, 0.3424,
0.3459

 32.2505, 0.3575,
0.3539

139.2939, 0.3401,
0.3446

 21.5529, 0.3639,
0.3572


174.1044, 0.3381,
0.3435

 13.5288, 0.3726,
0.3615

214.2792, 0.3364,
0.3426

 7.7937, 0.3847,
0.3673

260.2025, 0.3349,
0.3418

 3.9632, 0.4029,
0.3754

312.2588, 0.3336,

 1.6530, 0.4341,

0.3410

0.3887

370.8325, 0.3324,
0.3404

0.3929, 0.5812,
0.4188

0.0000, 0.0000,
0.0000

63.2036, 0.3484,
0.3491

63.2036, 0.3484,
0.3491

55.9612, 0.3708,
0.3598

71.2136, 0.3291,
0.3387

49.4543, 0.3965,
0.3705

80.0051, 0.3126,
0.3289

43.6607, 0.4253,
0.3805

89.6025, 0.2985,
0.3199

38.5539, 0.4569,
0.3887

95.7360, 0.2982,
0.3290

■ 34.1056, 0.4898,
0.3940

■ 30.2849, 0.5220,
0.3951

■ 27.0576, 0.5508,
0.3909

■ 24.3786, 0.5745,
0.3820

■ 24.3623, 0.5746,
0.3819

Harmonies

Analogous

The Analogous color harmony consists of three colors that are next to each other on the color wheel.



63.2036, 0.3463, 0.3345



63.2036, 0.3484, 0.3491



63.2036, 0.3407, 0.3589

Triad

The Triadic color harmony groups three colors that are evenly spaced from another and form a triangle on the color wheel.



63.2036, 0.3484, 0.3491



63.2036, 0.2908, 0.3389



63.2036, 0.2993, 0.2992

Complementary

The Complementary color scheme is a pair of colors which are on the opposite of each other on the color wheel.



63.2036, 0.3484, 0.3491



63.6930, 0.2816, 0.3080

Split Complementary

Split-complementary colors differ from the complementary color scheme. The scheme consists of three colors, the original color and two neighbors of the complement color.



63.2036, 0.2851, 0.2995



63.2036, 0.3484, 0.3491



63.2036, 0.2803, 0.3220

Square

The Square scheme is like the rectangle color scheme, but the four colors are evenly spaced on the color wheel.



63.2036, 0.3484, 0.3491



63.2036, 0.3072, 0.3534



63.2036, 0.2782, 0.3076



63.2036, 0.3175, 0.3063

Rectangle

The Rectangle color scheme consists of four colors that form a rectangle on the color wheel.



63.2036, 0.3484, 0.3491



63.2036, 0.3311, 0.3612



63.2036, 0.2782, 0.3076



63.2036, 0.2939, 0.2984

Sweetspot

The Sweet Spot groups the original color and five complimentary colors.



63.2064, 0.3484, 0.3491



93.2511, 0.3224, 0.3348



56.5130, 0.3288, 0.2979



19.8070, 0.3235, 0.3355



0.0000, 0.0000, 0.0000



21.4041, 0.3127, 0.3290

Same Dimension

The Same Dimension uses a secret algorithm to generate beautiful new colors.



63.2064, 0.3484, 0.3491



75.1460, 0.3574, 0.3536



74.7115, 0.3438, 0.3731



15.2875, 0.3283, 0.3382



13.8770, 0.5718, 0.3842



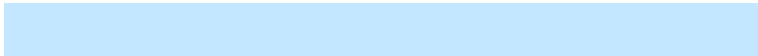
1.2019, 0.5448, 0.4056

Inverse Universe

The Inverse Universe completely reimagines the original color for something new.



63.6930, 0.2816, 0.3080



75.8571, 0.2750, 0.3030



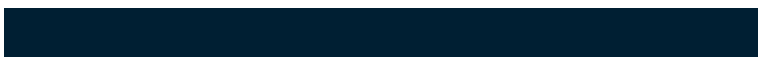
53.0686, 0.2799, 0.2807



15.3409, 0.2981, 0.3196



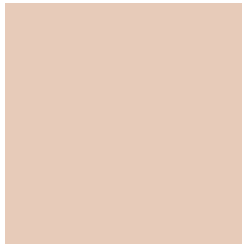
14.1122, 0.1878, 0.1959



1.2223, 0.1937, 0.2174

Previews

White Background



This preview shows how the Yxy color 63.2036, 0.3484, 0.3491 looks on a white background.

Color Contrast Check

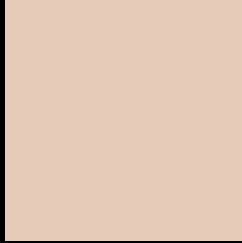
Large Text (above 18pt) WCAG AA × Fail

Any Text WCAG AA × Fail

Large Text (above 18pt) WCAG AAA × Fail

Any Text WCAG AAA × Fail

Black Background



This preview shows how the Yxy color 63.2036, 0.3484, 0.3491 looks on a black background.

Color Contrast Check

Large Text (above 18pt) WCAG AA ✓ Pass

Any Text WCAG AA ✓ Pass

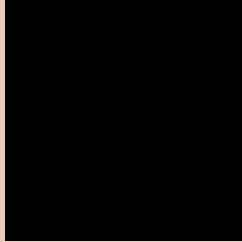
Large Text (above 18pt) WCAG AAA ✓ Pass

Any Text WCAG AAA ✓ Pass

If you want to check with other color combinations, try the [Color Contrast Checker](#).

Yxy 63.2036, 0.3484, 0.3491

Background



This preview shows how black text looks on a background with the Yxy color 63.2036, 0.3484, 0.3491.



This preview shows how white text looks on a background with the Yxy color 63.2036, 0.3484, 0.3491.

Color Blindness Simulation

Color vision deficiency is a very complex topic, and I could not describe the different causes any better than Wikipedia does, so if you want to learn more, you should check out their [article about color blindness](#).

Dichromacy



Original Color

63.2036, 0.3484, 0.3491

Protanopia

63.4513, 0.3347, 0.3531

Deuteranopia

63.2806, 0.3537, 0.3466



Tritanopia

63.3641, 0.3300, 0.3129

Trichromacy



Original Color

63.2036, 0.3484, 0.3491

Protanomaly

63.2174, 0.3398, 0.3518

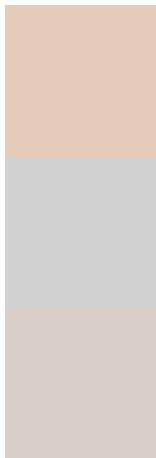
Deuteranomaly

63.4060, 0.3518, 0.3478

Tritanomaly

63.1128, 0.3374, 0.3258

Monochromacy



Original Color

63.2036, 0.3484, 0.3491

Achromatopsia

63.7597, 0.3127, 0.3290

Achromatomaly

63.5475, 0.3253, 0.3370

CSS Examples

Text

The CSS property to change the color of the text to Yxy 63.2036, 0.3484, 0.3491 is called "color". The color property can be set on classes, ids or directly on the HTML element.

This example shows how text in the color `rgb(231, 203, 185)` looks like.

```
.text, #text, p{  
    color:rgb(231, 203, 185)  
}
```

If you want to add a text shadow in that color use the text-shadow property, you can generate a text shadow directly with our [CSS Text Shadow Generator](#).

Here you see how black text with a 4 pixel rgb(231, 203, 185) colored shadow looks like.

```
.shadow{ text-shadow: 4px 4px 2px rgb(231, 203, 185) }
```

Border

The CSS property to change the border of an element to Yxy 63.2036, 0.3484, 0.3491 is called "border". The border property can be set on classes, ids or directly on the HTML element.

This example shows the color as border, it can be applied via the CSS property "border" or "border-color".

```
.border, #border, table{ border:4px solid rgb(231, 203, 185) }
```

If only the border color should be changed use the property `border-color`.

```
.border{ border-color:rgb(231, 203, 185) }
```

If you want to add a box shadow in that color use:

Here you see how a box with a 4 pixel `rgb(231, 203, 185)` colored shadow looks like.

```
.boxshadow{ -moz-box-shadow:4px 4px 4px  
4px rgb(231, 203, 185); -webkit-box-  
shadow:4px 4px 4px 4px rgb(231, 203, 185);  
box-shadow:4px 4px 4px 4px rgb(231, 203,  
185) }
```


Background

The CSS property to change the background color of an element to Yxy 63.2036, 0.3484, 0.3491 is called "background". The background property can be set on classes, ids or directly on the HTML element.

```
.background, #background, body{  
background: rgb(231, 203, 185) }
```

If only the background color should be changed can be used:

```
.background{ background-color: rgb(231,  
203, 185) }
```

This example shows the color as background, it is applied via the CSS property "background".

To optimize and compress your CSS code, you can use our [online CSS compressor and optimizer](#) based on csstidy. If you want to create a linear or radial gradient as background or border, check our [CSS Gradient Generator](#).

Hey! You found this booklet interesting? Support Converting Colors with the new Membership Option!

The pro membership hides all ads, plus gives you double the colors in the color bucket, and more awesome pro features!

[Learn more, Memberships starting at \\$2.50/m!](#)

**Follow me
on Twitter!**

@ConvertingColor