

Converting Colors

Yxy(63.4124, 0.3455, 0.3391)

Have a look what the booklet for
Yxy(63.4124, 0.3455, 0.3391)
contains.

Yxy(63.5393, 0.3456, 0.3401)	3
Conversions	4
Details	6
Harmonies	12
Previews	24
Color Blindness Simulation	27
CSS Examples	30

Color

Yxy(63.5393, 0.3456, 0.3401)

Conversions

Conversions Part 1

Format	Color
Hex	EACAC0
RGB	234, 202, 192
RGB Percent	92%, 79%, 75%
CMY	0.0823, 0.2078, 0.2471
CMYK	0.00, 0.14, 0.18, 0.08
HSL	14°, 50%, 84%
HSV	14°, 18%, 92%
XYZ	64.5668, 63.5393, 58.7192
YIQ	210.4280, 22.2820, 3.6740

Conversions

Conversions Part 2

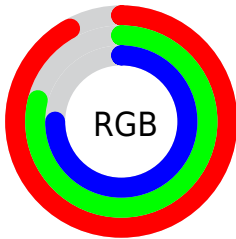
Format	Color
R_{YB}	234, 205, 192
Decimal	15387328
CIE _{Lab}	83.73, 9.68, 9.15
CIE _{LCh}	84, 13.321, 43.364
Yxy	63.5393, 0.3456, 0.3401
Android (android.graphics.Color)	4293577408 (0xFFEACAC0)
YUV	210.4280, -9.0850, 20.6726
Hunter-Lab	79.7115, 5.0909, 12.1223

Details

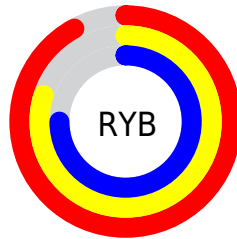
The Yxy color **63.5393, 0.3456, 0.3401** is a light color, and the websafe version is hex **FFCCCC**. A complement of this color would be **70.4488, 0.2851, 0.3176**, and the grayscale version is **64.7961, 0.3127, 0.3290**.

A 20% lighter version of the original color is **99.5573, 0.3168, 0.3357**, and **32.5089, 0.3536, 0.3420** is the 20% darker color. If you saturate the color by 10%, you get **54.7005, 0.3692, 0.3467**, and if you desaturate by 10%, it is **73.5144, 0.3260, 0.3338**.

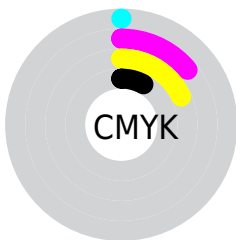
Distribution



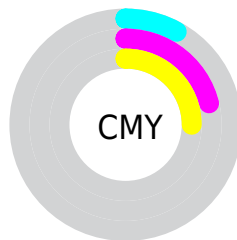
- Red (92%)
- Green (79%)
- Blue (75%)



- Red (92%)
- Yellow (80%)
- Blue (75%)



- Cyan (0%)
- Magenta (14%)
- Yellow (18%)
- Black (8%)





- Cyan (8%)
- Magenta (21%)
- Yellow (25%)

Brightness & Saturation Gradients


These gradients show how the Yxy color 63.5393, 0.3456, 0.3401 changes by changing the brightness by 10 percent. The first figure shows a shift by +10% for each color and the second figure -10%.

Similar to the brightness gradients but the following saturation gradients show a change of the Yxy color 63.5393, 0.3456, 0.3401 by changing the saturation by 10% instead.

 63.5393, 0.3456,
0.3401

 63.5393, 0.3456,
0.3401


437.5241, 0.3299,
0.3350

 46.2776, 0.3493,
0.3412


 109.9472, 0.3401,
0.3384

 32.4650, 0.3540,
0.3426


139.8622, 0.3379,
0.3377

 21.7169, 0.3600,
0.3443


174.7638, 0.3361,
0.3371

 13.6490, 0.3680,
0.3466

215.0363, 0.3345,
0.3366

 7.8770, 0.3793,
0.3495

261.0642, 0.3332,
0.3361

 4.0163, 0.3962,
0.3534

313.2319, 0.3319,

 1.6827, 0.4245,

0.3357

0.3589

371.9237, 0.3309,
0.3354

0.4124, 0.6038,
0.3962

0.0000, 0.0000,
0.0000

63.5393, 0.3456,
0.3401

63.5393, 0.3456,
0.3401

54.7005, 0.3692,
0.3467

73.5144, 0.3260,
0.3338

46.9490, 0.3971,
0.3534

84.6556, 0.3096,
0.3278

40.2446, 0.4298,
0.3596

96.2339, 0.2999,
0.3290

34.5416, 0.4668,
0.3645

■ 29.7905, 0.5066,
0.3672

■ 25.9376, 0.5462,
0.3666

■ 22.9234, 0.5813,
0.3619

■ 20.6781, 0.6079,
0.3536

■ 20.3036, 0.6125,
0.3519

Harmonies

Analogous

The Analogous color harmony consists of three colors that are next to each other on the color wheel.



63.5393, 0.3384, 0.3257



63.5393, 0.3456, 0.3401



63.5393, 0.3437, 0.3521

Triad

The Triadic color harmony groups three colors that are evenly spaced from another and form a triangle on the color wheel.



63.5393, 0.3456, 0.3401



63.5393, 0.3008, 0.3465



63.5393, 0.2920, 0.3007

Complementary

The Complementary color scheme is a pair of colors which are on the opposite of each other on the color wheel.



63.5393, 0.3456, 0.3401



70.4488, 0.2851, 0.3176

Split Complementary

Split-complementary colors differ from the complementary color scheme. The scheme consists of three colors, the original color and two neighbors of the complement color.



63.5393, 0.2826, 0.3053



63.5393, 0.3456, 0.3401



63.5393, 0.2875, 0.3316

Square

The Square scheme is like the rectangle color scheme, but the four colors are evenly spaced on the color wheel.



63.5393, 0.3456, 0.3401



63.5393, 0.3176, 0.3564



63.5393, 0.2809, 0.3165



63.5393, 0.3072, 0.3034

Rectangle

The Rectangle color scheme consists of four colors that form a rectangle on the color wheel.



63.5393, 0.3456, 0.3401



63.5393, 0.3375, 0.3571



63.5393, 0.2809, 0.3165



63.5393, 0.2881, 0.3015

Sweetspot

The Sweet Spot groups the original color and five complimentary colors.



63.5422, 0.3456, 0.3401



93.1667, 0.3208, 0.3320



60.5781, 0.3221, 0.2945



19.7422, 0.3220, 0.3324



0.0000, 0.0000, 0.0000



21.4041, 0.3127, 0.3290

Same Dimension

The Same Dimension uses a secret algorithm to generate beautiful new colors.



63.5422, 0.3456, 0.3401



72.6055, 0.3548, 0.3428



73.9681, 0.3417, 0.3622



15.6372, 0.3287, 0.3347



11.5705, 0.6099, 0.3539



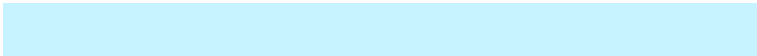
1.0539, 0.5832, 0.3752

Inverse Universe

The Inverse Universe completely reimagines the original color for something new.



70.4488, 0.2851, 0.3176



82.6273, 0.2789, 0.3147



59.9464, 0.2838, 0.2934



16.4776, 0.2981, 0.3232



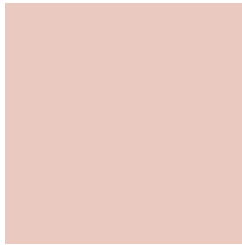
21.4785, 0.2028, 0.2501



1.8328, 0.2062, 0.2623

Previews

White Background



This preview shows how the Yxy color 63.5393, 0.3456, 0.3401 looks on a white background.

Color Contrast Check

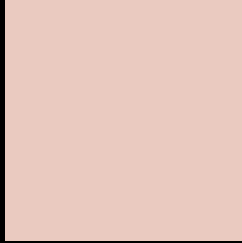
Large Text (above 18pt) WCAG AA × Fail

Any Text WCAG AA × Fail

Large Text (above 18pt) WCAG AAA × Fail

Any Text WCAG AAA × Fail

Black Background



This preview shows how the Yxy color 63.5393, 0.3456, 0.3401 looks on a black background.

Color Contrast Check

Large Text (above 18pt) WCAG AA ✓ Pass

Any Text WCAG AA ✓ Pass

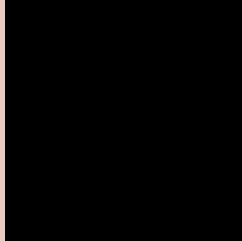
Large Text (above 18pt) WCAG AAA ✓ Pass

Any Text WCAG AAA ✓ Pass

If you want to check with other color combinations, try the [Color Contrast Checker](#).

Yxy 63.5393, 0.3456, 0.3401

Background



This preview shows how black text looks on a background with the Yxy color 63.5393, 0.3456, 0.3401.



This preview shows how white text looks on a background with the Yxy color 63.5393, 0.3456, 0.3401.

Color Blindness Simulation

Color vision deficiency is a very complex topic, and I could not describe the different causes any better than Wikipedia does, so if you want to learn more, you should check out their [article about color blindness](#).

Dichromacy



Original Color

63.5393, 0.3456, 0.3401

Protanopia

63.6508, 0.3281, 0.3439

Deuteranopia

63.7090, 0.3464, 0.3401



Tritanopia

63.7064, 0.3315, 0.3130

Trichromacy



Original Color

63.5393, 0.3456, 0.3401

Protanomaly

63.7256, 0.3346, 0.3426

Deuteranomaly

63.7090, 0.3464, 0.3401

Tritanomaly

63.5977, 0.3367, 0.3226

Monochromacy



Original Color

63.5393, 0.3456, 0.3401

Achromatopsia

64.4480, 0.3127, 0.3290

Achromatomaly

63.9975, 0.3247, 0.3335

CSS Examples

Text

The CSS property to change the color of the text to Yxy 63.5393, 0.3456, 0.3401 is called "color". The color property can be set on classes, ids or directly on the HTML element.

This example shows how text in the color `rgb(234, 202, 192)` looks like.

```
.text, #text, p{  
    color:rgb(234, 202, 192)  
}
```

If you want to add a text shadow in that color use the text-shadow property, you can generate a text shadow directly with our [CSS Text Shadow Generator](#).

Here you see how black text with a 4 pixel rgb(234, 202, 192) colored shadow looks like.

```
.shadow{ text-shadow: 4px 4px 2px rgb(234, 202, 192) }
```

Border

The CSS property to change the border of an element to Yxy 63.5393, 0.3456, 0.3401 is called "border". The border property can be set on classes, ids or directly on the HTML element.

This example shows the color as border, it can be applied via the CSS property "border" or "border-color".

```
.border, #border, table{ border:4px solid rgb(234, 202, 192) }
```

If only the border color should be changed use the property border-color.

```
.border{ border-color:rgb(234, 202, 192) }
```

If you want to add a box shadow in that color use:

Here you see how a box with a 4 pixel rgb(234, 202, 192) colored shadow looks like.

```
.boxshadow{ -moz-box-shadow:4px 4px 4px  
4px rgb(234, 202, 192); -webkit-box-  
shadow:4px 4px 4px 4px rgb(234, 202, 192);  
box-shadow:4px 4px 4px 4px rgb(234, 202,  
192) }
```


Background

The CSS property to change the background color of an element to Yxy 63.5393, 0.3456, 0.3401 is called "background". The background property can be set on classes, ids or directly on the HTML element.

```
.background, #background, body{  
background: rgb(234, 202, 192) }
```

If only the background color should be changed can be used:

```
.background{ background-color: rgb(234,  
202, 192) }
```

This example shows the color as background, it is applied via the CSS property "background".

To optimize and compress your CSS code, you can use our [online CSS compressor and optimizer](#) based on csstidy. If you want to create a linear or radial gradient as background or border, check our [CSS Gradient Generator](#).

Hey! You found this booklet interesting? Support Converting Colors with the new Membership Option!

The pro membership hides all ads, plus gives you double the colors in the color bucket, and more awesome pro features!

[Learn more, Memberships starting at \\$2.50/m!](#)

**Follow me
on Twitter!**

@ConvertingColor