

Converting Colors

Yxy(63.4549, 0.3252, 0.3363)

Have a look what the booklet for
Yxy(63.4549, 0.3252, 0.3363)
contains.

Yxy(63.5475, 0.3253, 0.3370)	3
Conversions	4
Details	6
Harmonies	12
Previews	24
Color Blindness Simulation	27
CSS Examples	30

Color

Yxy(63.5475, 0.3253, 0.3370)

Conversions

Conversions Part 1

Format	Color
Hex	D9CFC8
RGB	217, 207, 200
RGB Percent	85%, 81%, 78%
CMY	0.1492, 0.1881, 0.2157
CMYK	0.00, 0.05, 0.08, 0.15
HSL	25°, 18%, 82%
HSV	25°, 8%, 85%
XYZ	61.3413, 63.5475, 63.6795
YIQ	209.1920, 8.2070, -0.0570

Conversions

Conversions Part 2

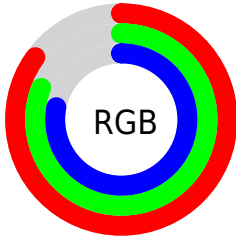
Format	Color
R _Y B	217, 212, 200
Decimal	14274504
CIE Lab	83.73, 2.22, 4.69
CIE LCh	84, 5.193, 64.672
Yxy	63.5475, 0.3253, 0.3370
Android (android.graphics.Color)	4292464584 (0xFFD9CFC8)
YUV	209.1920, -4.5317, 6.8476
Hunter-Lab	79.7167, -2.1501, 8.4395

Details

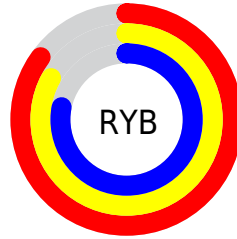
The Yxy color **63.5475, 0.3253, 0.3370** is a light color, and the websafe version is hex **CCCCCC**. A complement of this color would be **63.3444, 0.3007, 0.3209**, and the grayscale version is **63.9158, 0.3127, 0.3290**.

A 20% lighter version of the original color is **100.0000, 0.3127, 0.3290**, and **32.5392, 0.3285, 0.3395** is the 20% darker color. If you saturate the color by 10%, you get **56.6942, 0.3437, 0.3478**, and if you desaturate by 10%, it is **71.0459, 0.3094, 0.3268**.

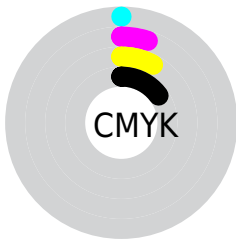
Distribution



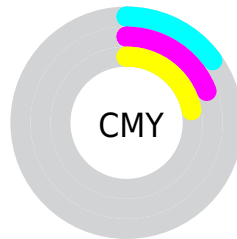
- Red (85%)
- Green (81%)
- Blue (78%)



- Red (85%)
- Yellow (83%)
- Blue (78%)



- Cyan (0%)
- Magenta (5%)
- Yellow (8%)
- Black (15%)



- Cyan (15%)
- Magenta (19%)
- Yellow (22%)

Brightness & Saturation Gradients

These gradients show how the Yxy color 63.5475, 0.3253, 0.3370 changes by changing the brightness by 10 percent. The first figure shows a shift by +10% for each color and the second figure -10%.

Similar to the brightness gradients but the following saturation gradients show a change of the Yxy color 63.5475, 0.3253, 0.3370 by changing the saturation by 10% instead.

■ 63.5475, 0.3253,
0.3370

■ 63.5475, 0.3253,
0.3370

437.5538, 0.3193,
0.3332

■ 46.2843, 0.3267,
0.3379

109.9590, 0.3232,
0.3357

■ 32.4702, 0.3285,
0.3390

139.8761, 0.3224,
0.3352

■ 21.7209, 0.3307,
0.3404

174.7799, 0.3217,
0.3347

■ 13.6520, 0.3338,
0.3422

215.0548, 0.3211,
0.3344

■ 7.8790, 0.3380,
0.3448

261.0853, 0.3206,
0.3340

■ 4.0176, 0.3445,
0.3487

313.2557, 0.3201,

■ 1.6834, 0.3553,

0.3337

371.9503, 0.3197,
0.3335

0.3550

0.4129, 0.4553,
0.4209

0.0000, 0.0000,
0.0000

63.5475, 0.3253,
0.3370

63.5475, 0.3253,
0.3370

56.6942, 0.3437,
0.3478

71.0459, 0.3094,
0.3268

50.4601, 0.3651,
0.3591

79.1979, 0.2958,
0.3174

44.8293, 0.3895,
0.3704

87.3555, 0.2896,
0.3188

39.7825, 0.4169,
0.3812

93.4831, 0.2900,
0.3289

■ 35.2990, 0.4469,
0.3904

■ 31.3566, 0.4785,
0.3971

■ 27.9315, 0.5098,
0.3997

■ 24.9973, 0.5384,
0.3973

■ 22.5222, 0.5624,
0.3896

Harmonies

Analogous

The Analogous color harmony consists of three colors that are next to each other on the color wheel.



63.5475, 0.3250, 0.3319



63.5475, 0.3253, 0.3370



63.5475, 0.3222, 0.3400

Triad

The Triadic color harmony groups three colors that are evenly spaced from another and form a triangle on the color wheel.



63.5475, 0.3253, 0.3370



63.5475, 0.3042, 0.3318



63.5475, 0.3088, 0.3182

Complementary

The Complementary color scheme is a pair of colors which are on the opposite of each other on the color wheel.



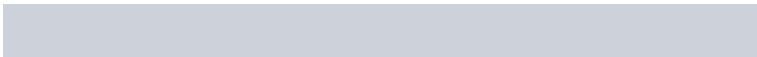
63.5475, 0.3253, 0.3370



63.3444, 0.3007, 0.3209

Split Complementary

Split-complementary colors differ from the complementary color scheme. The scheme consists of three colors, the original color and two neighbors of the complement color.



63.5475, 0.3033, 0.3181



63.5475, 0.3253, 0.3370



63.5475, 0.3006, 0.3259

Square

The Square scheme is like the rectangle color scheme, but the four colors are evenly spaced on the color wheel.



63.5475, 0.3253, 0.3370



63.5475, 0.3100, 0.3371



63.5475, 0.3003, 0.3209



63.5475, 0.3154, 0.3212

Rectangle

The Rectangle color scheme consists of four colors that form a rectangle on the color wheel.



63.5475, 0.3253, 0.3370



63.5475, 0.3187, 0.3404



63.5475, 0.3003, 0.3209



63.5475, 0.3067, 0.3179

Sweetspot

The Sweet Spot groups the original color and five complimentary colors.



63.5503, 0.3253, 0.3370



97.7847, 0.3158, 0.3310



60.7162, 0.3185, 0.3175



20.9532, 0.3157, 0.3309



0.0000, 0.0000, 0.0000



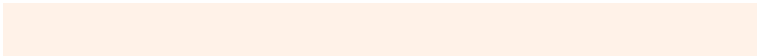
21.4041, 0.3127, 0.3290

Same Dimension

The Same Dimension uses a secret algorithm to generate beautiful new colors.



63.5503, 0.3253, 0.3370



90.3300, 0.3275, 0.3384



67.6418, 0.3244, 0.3462



13.9332, 0.3281, 0.3387



13.5430, 0.5648, 0.3897



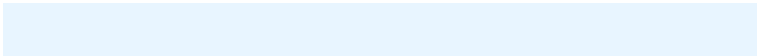
1.0448, 0.5356, 0.4129

Inverse Universe

The Inverse Universe completely reimagines the original color for something new.



63.3444, 0.3007, 0.3209



89.9875, 0.2987, 0.3195



59.3876, 0.3007, 0.3112



13.8782, 0.2982, 0.3191



12.4506, 0.1856, 0.1880



0.9751, 0.1926, 0.2133

Previews

White Background



This preview shows how the Yxy color 63.5475, 0.3253, 0.3370 looks on a white background.

Color Contrast Check

Large Text (above 18pt) WCAG AA × Fail

Any Text WCAG AA × Fail

Large Text (above 18pt) WCAG AAA × Fail

Any Text WCAG AAA × Fail

Black Background



This preview shows how the Yxy color 63.5475, 0.3253, 0.3370 looks on a black background.

Color Contrast Check

Large Text (above 18pt) WCAG AA ✓ Pass

Any Text WCAG AA ✓ Pass

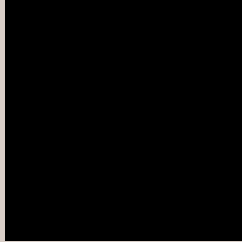
Large Text (above 18pt) WCAG AAA ✓ Pass

Any Text WCAG AAA ✓ Pass

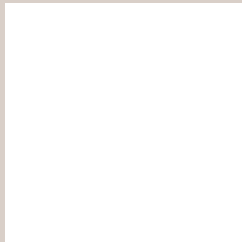
If you want to check with other color combinations, try the [Color Contrast Checker](#).

Yxy 63.5475, 0.3253, 0.3370

Background



This preview shows how black text looks on a background with the Yxy color 63.5475, 0.3253, 0.3370.

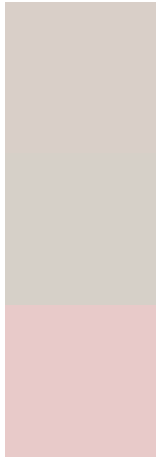


This preview shows how white text looks on a background with the Yxy color 63.5475, 0.3253, 0.3370.

Color Blindness Simulation

Color vision deficiency is a very complex topic, and I could not describe the different causes any better than Wikipedia does, so if you want to learn more, you should check out their [article about color blindness](#).

Dichromacy



Original Color

63.5475, 0.3253, 0.3370

Protanopia

63.5780, 0.3229, 0.3382

Deuteranopia

63.6139, 0.3371, 0.3302



Tritanopia

63.5687, 0.3135, 0.3113

Trichromacy



Original Color

63.5475, 0.3253, 0.3370

Protanomaly

63.7290, 0.3237, 0.3381

Deuteranomaly

63.7337, 0.3328, 0.3324

Tritanomaly

63.5268, 0.3177, 0.3201

Monochromacy



Original Color

63.5475, 0.3253, 0.3370

Achromatopsia

63.7597, 0.3127, 0.3290

Achromatomaly

63.5650, 0.3171, 0.3313

CSS Examples

Text

The CSS property to change the color of the text to Yxy 63.5475, 0.3253, 0.3370 is called "color". The color property can be set on classes, ids or directly on the HTML element.

This example shows how text in the color `rgb(217, 207, 200)` looks like.

```
.text, #text, p{  
    color:rgb(217, 207, 200)  
}
```

If you want to add a text shadow in that color use the text-shadow property, you can generate a text shadow directly with our [CSS Text Shadow Generator](#).

Here you see how black text with a 4 pixel rgb(217, 207, 200) colored shadow looks like.

```
.shadow{ text-shadow: 4px 4px 2px rgb(217, 207, 200) }
```

Border

The CSS property to change the border of an element to Yxy 63.5475, 0.3253, 0.3370 is called "border". The border property can be set on classes, ids or directly on the HTML element.

This example shows the color as border, it can be applied via the CSS property "border" or "border-color".

```
.border, #border, table{ border:4px solid rgb(217, 207, 200) }
```

If only the border color should be changed use the property `border-color`.

```
.border{ border-color:rgb(217, 207, 200) }
```

If you want to add a box shadow in that color use:

Here you see how a box with a 4 pixel `rgb(217, 207, 200)` colored shadow looks like.

```
.boxshadow{ -moz-box-shadow:4px 4px 4px  
4px rgb(217, 207, 200); -webkit-box-  
shadow:4px 4px 4px 4px rgb(217, 207, 200);  
box-shadow:4px 4px 4px 4px rgb(217, 207,  
200) }
```


Background

The CSS property to change the background color of an element to Yxy 63.5475, 0.3253, 0.3370 is called "background". The background property can be set on classes, ids or directly on the HTML element.

```
.background, #background, body{  
background: rgb(217, 207, 200) }
```

If only the background color should be changed can be used:

```
.background{ background-color: rgb(217,  
207, 200) }
```

This example shows the color as background, it is applied via the CSS property "background".

To optimize and compress your CSS code, you can use our [online CSS compressor and optimizer](#) based on csstidy. If you want to create a linear or radial gradient as background or border, check our [CSS Gradient Generator](#).

Hey! You found this booklet interesting? Support Converting Colors with the new Membership Option!

The pro membership hides all ads, plus gives you double the colors in the color bucket, and more awesome pro features!

[Learn more, Memberships starting at \\$2.50/m!](#)

**Follow me
on Twitter!**

@ConvertingColor