

Converting Colors

Yxy(63.4568, 0.3370, 0.3379)

Have a look what the booklet for
Yxy(63.4568, 0.3370, 0.3379)
contains.

Yxy(63.5021, 0.3366, 0.3380)	3
<i>Conversions</i>	4
<i>Details</i>	6
<i>Harmonies</i>	12
<i>Previews</i>	24
<i>Color Blindness Simulation</i>	27
<i>CSS Examples</i>	30

Color

Yxy(63.5021, 0.3366, 0.3380)

Conversions

Conversions Part 1

Format	Color
Hex	E3CCC4
RGB	227, 204, 196
RGB Percent	89%, 80%, 77%
CMY	0.1097, 0.2000, 0.2315
CMYK	0.00, 0.10, 0.14, 0.11
HSL	15°, 36%, 83%
HSV	15°, 14%, 89%
XYZ	63.2391, 63.5021, 61.1349
YIQ	209.9650, 16.2760, 2.3880

Conversions

Conversions Part 2

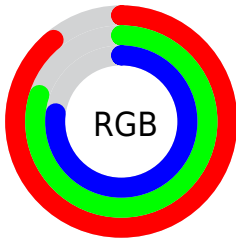
Format	Color
R _Y B	227, 207, 196
Decimal	14929092
CIE Lab	83.71, 6.73, 6.91
CIE LCh	84, 9.650, 45.739
Yxy	63.5021, 0.3366, 0.3380
Android (android.graphics.Color)	4293119172 (0xFFE3CCC4)
YUV	209.9650, -6.8847, 14.9397
Hunter-Lab	79.6882, 2.1999, 10.2959

Details

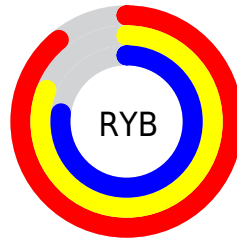
The Yxy color **63.5021, 0.3366, 0.3380** is a light color, and the websafe version is hex **CCCCCC**. A complement of this color would be **67.9465, 0.2917, 0.3198**, and the grayscale version is **64.4651, 0.3127, 0.3290**.

A 20% lighter version of the original color is **99.8718, 0.3139, 0.3309**, and **32.4236, 0.3425, 0.3408** is the 20% darker color. If you saturate the color by 10%, you get **54.9720, 0.3582, 0.3451**, and if you desaturate by 10%, it is **73.0597, 0.3186, 0.3313**.

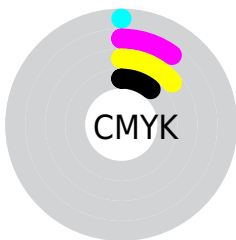
Distribution



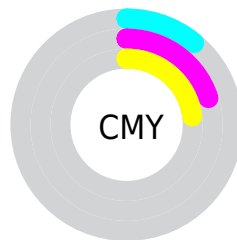
- Red (89%)
- Green (80%)
- Blue (77%)



- Red (89%)
- Yellow (81%)
- Blue (77%)



- Cyan (0%)
- Magenta (10%)
- Yellow (14%)
- Black (11%)



- Cyan (11%)
- Magenta (20%)
- Yellow (23%)

Brightness & Saturation Gradients

These gradients show how the Yxy color 63.5021, 0.3366, 0.3380 changes by changing the brightness by 10 percent. The first figure shows a shift by +10% for each color and the second figure -10%.

Similar to the brightness gradients but the following saturation gradients show a change of the Yxy color 63.5021, 0.3366, 0.3380 by changing the saturation by 10% instead.

63.5021, 0.3366,
0.3380

63.5021, 0.3366,
0.3380

437.3894, 0.3252,
0.3338

46.2475, 0.3393,
0.3389

109.8936, 0.3326,
0.3366

32.4412, 0.3427,
0.3401

139.7992, 0.3310,
0.3360

21.6987, 0.3470,
0.3416

174.6907, 0.3297,
0.3355

13.6357, 0.3528,
0.3435

214.9525, 0.3286,
0.3351

7.8677, 0.3610,
0.3461

260.9688, 0.3276,
0.3347

4.0104, 0.3733,
0.3498

313.1241, 0.3267,

1.6794, 0.3940,

0.3344

371.8029, 0.3259,
0.3341

0.3554

0.4103, 0.5747,
0.4253

0.0000, 0.0000,
0.0000

63.5021, 0.3366,
0.3380

63.5021, 0.3366,
0.3380

54.9720, 0.3582,
0.3451

73.0597, 0.3186,
0.3313

47.4264, 0.3838,
0.3523

83.6689, 0.3035,
0.3252

40.8318, 0.4139,
0.3593

94.7647, 0.2958,
0.3285

35.1497, 0.4484,
0.3653

95.0752, 0.2958,
0.3290

■ 30.3385, 0.4863,
0.3696

■ 26.3537, 0.5255,
0.3709

■ 23.1460, 0.5625,
0.3682

■ 20.6605, 0.5929,
0.3612

■ 19.4269, 0.6080,
0.3554

Harmonies

Analogous

The Analogous color harmony consists of three colors that are next to each other on the color wheel.



63.5021, 0.3319, 0.3275



63.5021, 0.3366, 0.3380



63.5021, 0.3347, 0.3464

Triad

The Triadic color harmony groups three colors that are evenly spaced from another and form a triangle on the color wheel.



63.5021, 0.3366, 0.3380



63.5021, 0.3033, 0.3408



63.5021, 0.2985, 0.3084

Complementary

The Complementary color scheme is a pair of colors which are on the opposite of each other on the color wheel.



63.5021, 0.3366, 0.3380



67.9465, 0.2917, 0.3198

Split Complementary

Split-complementary colors differ from the complementary color scheme. The scheme consists of three colors, the original color and two neighbors of the complement color.



63.5021, 0.2911, 0.3114



63.5021, 0.3366, 0.3380



63.5021, 0.2938, 0.3301

Square

The Square scheme is like the rectangle color scheme, but the four colors are evenly spaced on the color wheel.



63.5021, 0.3366, 0.3380



63.5021, 0.3153, 0.3483



63.5021, 0.2894, 0.3193



63.5021, 0.3097, 0.3107

Rectangle

The Rectangle color scheme consists of four colors that form a rectangle on the color wheel.



63.5021, 0.3366, 0.3380



63.5021, 0.3300, 0.3496



63.5021, 0.2894, 0.3193



63.5021, 0.2955, 0.3088

Sweetspot

The Sweet Spot groups the original color and five complimentary colors.



63.5049, 0.3366, 0.3380



94.6282, 0.3191, 0.3316



60.9337, 0.3200, 0.3035



20.0434, 0.3204, 0.3320



0.0000, 0.0000, 0.0000



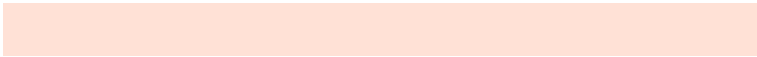
21.4041, 0.3127, 0.3290

Same Dimension

The Same Dimension uses a secret algorithm to generate beautiful new colors.



63.5049, 0.3366, 0.3380



79.8350, 0.3415, 0.3397



71.1208, 0.3343, 0.3546



14.9702, 0.3286, 0.3351



11.4869, 0.6055, 0.3575



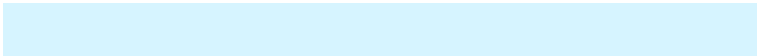
0.9961, 0.5768, 0.3802

Inverse Universe

The Inverse Universe completely reimagines the original color for something new.



67.9465, 0.2917, 0.3198



86.5250, 0.2879, 0.3181



60.3428, 0.2911, 0.3021



15.6730, 0.2981, 0.3228



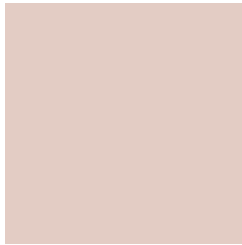
19.8427, 0.2009, 0.2432



1.6141, 0.2048, 0.2572

Previews

White Background



This preview shows how the Yxy color 63.5021, 0.3366, 0.3380 looks on a white background.

Color Contrast Check

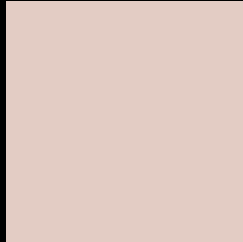
Large Text (above 18pt) WCAG AA × Fail

Any Text WCAG AA × Fail

Large Text (above 18pt) WCAG AAA × Fail

Any Text WCAG AAA × Fail

Black Background



This preview shows how the Yxy color 63.5021, 0.3366, 0.3380 looks on a black background.

Color Contrast Check

Large Text (above 18pt) WCAG AA ✓ Pass

Any Text WCAG AA ✓ Pass

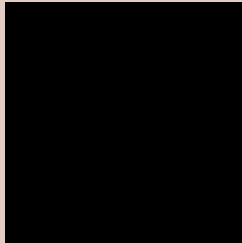
Large Text (above 18pt) WCAG AAA ✓ Pass

Any Text WCAG AAA ✓ Pass

If you want to check with other color combinations, try the [Color Contrast Checker](#).

Yxy 63.5021, 0.3366, 0.3380

Background



This preview shows how black text looks on a background with the Yxy color 63.5021, 0.3366, 0.3380.



This preview shows how white text looks on a background with the Yxy color 63.5021, 0.3366, 0.3380.

Color Blindness Simulation

Color vision deficiency is a very complex topic, and I could not describe the different causes any better than Wikipedia does, so if you want to learn more, you should check out their [article about color blindness](#).

Dichromacy



Original Color

63.5021, 0.3366, 0.3380

Protanopia

63.6360, 0.3251, 0.3405

Deuteranopia

63.5502, 0.3417, 0.3357



Tritanopia

63.6060, 0.3236, 0.3117

Trichromacy



Original Color

63.5021, 0.3366, 0.3380

Protanomaly

63.7169, 0.3291, 0.3404

Deuteranomaly

63.6863, 0.3399, 0.3368

Tritanomaly

63.5025, 0.3287, 0.3214

Monochromacy



Original Color

63.5021, 0.3366, 0.3380

Achromatopsia

64.4480, 0.3127, 0.3290

Achromatomaly

64.1185, 0.3209, 0.3324

CSS Examples

Text

The CSS property to change the color of the text to Yxy 63.5021, 0.3366, 0.3380 is called "color". The color property can be set on classes, ids or directly on the HTML element.

This example shows how text in the color `rgb(227, 204, 196)` looks like.

```
.text, #text, p{  
    color:rgb(227, 204, 196)  
}
```

If you want to add a text shadow in that color use the text-shadow property, you can generate a text shadow directly with our [CSS Text Shadow Generator](#).

Here you see how black text with a 4 pixel rgb(227, 204, 196) colored shadow looks like.

```
.shadow{ text-shadow: 4px 4px 2px rgb(227, 204, 196) }
```

Border

The CSS property to change the border of an element to Yxy 63.5021, 0.3366, 0.3380 is called "border". The border property can be set on classes, ids or directly on the HTML element.

This example shows the color as border, it can be applied via the CSS property "border" or "border-color".

```
.border, #border, table{ border:4px solid rgb(227, 204, 196) }
```

If only the border color should be changed use the property border-color.

```
.border{ border-color:rgb(227, 204, 196) }
```

If you want to add a box shadow in that color use:

Here you see how a box with a 4 pixel rgb(227, 204, 196) colored shadow looks like.

```
.boxshadow{ -moz-box-shadow:4px 4px 4px  
4px rgb(227, 204, 196); -webkit-box-  
shadow:4px 4px 4px 4px rgb(227, 204, 196);  
box-shadow:4px 4px 4px 4px rgb(227, 204,  
196) }
```


Background

The CSS property to change the background color of an element to Yxy 63.5021, 0.3366, 0.3380 is called "background". The background property can be set on classes, ids or directly on the HTML element.

```
.background, #background, body{  
background: rgb(227, 204, 196) }
```

If only the background color should be changed can be used:

```
.background{ background-color: rgb(227,  
204, 196) }
```

This example shows the color as background, it is applied via the CSS property "background".

To optimize and compress your CSS code, you can use our [online CSS compressor and optimizer](#) based on csstidy. If you want to create a linear or radial gradient as background or border, check our [CSS Gradient Generator](#).

Hey! You found this booklet interesting? Support Converting Colors with the new Membership Option!

The pro membership hides all ads, plus gives you double the colors in the color bucket, and more awesome pro features!

[Learn more, Memberships starting at \\$2.50/m!](#)

**Follow me
on Twitter!**

@ConvertingColor