

Converting Colors

$Yxy(63.5222, 0.3375, 0.3330)$

Have a look what the booklet for
Yxy(63.5222, 0.3375, 0.3330)
contains.

Yxy(63.3535, 0.3378, 0.3324)	3
<i>Conversions</i>	4
<i>Details</i>	6
<i>Harmonies</i>	12
<i>Previews</i>	24
<i>Color Blindness Simulation</i>	27
<i>CSS Examples</i>	30

Color

Yxy(63.3535, 0.3378, 0.3324)

Conversions

Conversions Part 1

Format	Color
Hex	E7CAC7
RGB	231, 202, 199
RGB Percent	91%, 79%, 78%
CMY	0.0941, 0.2078, 0.2197
CMYK	0.00, 0.13, 0.14, 0.09
HSL	6°, 40%, 84%
HSV	6°, 14%, 91%
XYZ	64.3827, 63.3535, 62.8580
YIQ	210.3290, 18.2470, 5.2150

Conversions

Conversions Part 2

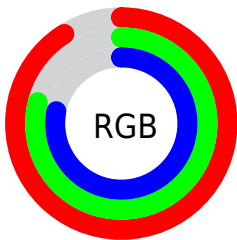
Format	Color
R _Y B	231, 202, 199
Decimal	15190727
CIE Lab	83.63, 9.69, 5.24
CIE LCh	84, 11.013, 28.417
Yxy	63.3535, 0.3378, 0.3324
Android (android.graphics.Color)	4293380807 (0xFFE7CAC7)
YUV	210.3290, -5.5852, 18.1285
Hunter-Lab	79.5949, 5.0939, 8.8937

Details

The Yxy color **63.3535, 0.3378, 0.3324** is a light color, and the websafe version is hex **FFCCCC**. A complement of this color would be **73.3844, 0.2915, 0.3256**, and the grayscale version is **64.7057, 0.3127, 0.3290**.

A 20% lighter version of the original color is **100.0000, 0.3127, 0.3290**, and **32.3381, 0.3442, 0.3334** is the 20% darker color. If you saturate the color by 10%, you get **53.2026, 0.3610, 0.3351**, and if you desaturate by 10%, it is **75.0037, 0.3190, 0.3299**.

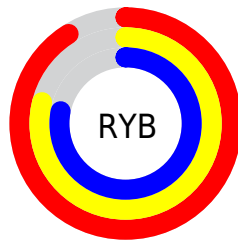
Distribution



Red (91%)

Green (79%)

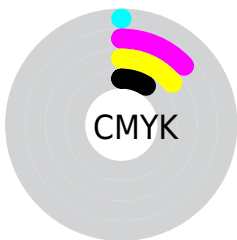
Blue (78%)



Red (91%)

Yellow (79%)

Blue (78%)

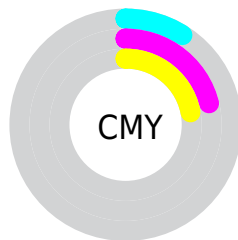


Cyan (0%)

Magenta (13%)

Yellow (14%)

Black (9%)



Cyan (9%)


Magenta (21%)


Yellow (22%)

Brightness & Saturation Gradients

These gradients show how the Yxy color 63.3535, 0.3378, 0.3324 changes by changing the brightness by 10 percent. The first figure shows a shift by +10% for each color and the second figure -10%.

Similar to the brightness gradients but the following saturation gradients show a change of the Yxy color 63.3535, 0.3378, 0.3324 by changing the saturation by 10% instead.

 63.3535, 0.3378,
0.3324

 63.3535, 0.3378,
0.3324


436.8513, 0.3258,
0.3309

 46.1272, 0.3406,
0.3327


109.6793, 0.3336,
0.3319

 32.3462, 0.3442,
0.3331


139.5477, 0.3320,
0.3317

 21.6261, 0.3487,
0.3336


174.3989, 0.3306,
0.3315

 13.5824, 0.3549,
0.3341

214.6174, 0.3294,
0.3314

 7.8308, 0.3635,
0.3349

260.5874, 0.3283,
0.3312

 3.9869, 0.3765,
0.3357

312.6935, 0.3274,

 1.6662, 0.3984,

0.3311

371.3200, 0.3266,
0.3310

0.3366

0.4016, 0.5668,
0.3682

0.0000, 0.0000,
0.0000

63.3535, 0.3378,
0.3324

63.3535, 0.3378,
0.3324

53.2026, 0.3610,
0.3351

75.0037, 0.3190,
0.3299

44.4819, 0.3894,
0.3378

88.2017, 0.3037,
0.3276

37.1297, 0.4238,
0.3403

95.7290, 0.2982,
0.3290

31.0765, 0.4639,
0.3424

■ 26.2465, 0.5085,
0.3436

■ 22.5561, 0.5539,
0.3432

■ 19.9114, 0.5941,
0.3410

■ 18.2029, 0.6228,
0.3371

■ 17.5555, 0.6340,
0.3348

Harmonies

Analogous

The Analogous color harmony consists of three colors that are next to each other on the color wheel.



63.3535, 0.3287, 0.3205



63.3535, 0.3378, 0.3324



63.3535, 0.3400, 0.3437

Triad

The Triadic color harmony groups three colors that are evenly spaced from another and form a triangle on the color wheel.



63.3535, 0.3378, 0.3324



63.3535, 0.3097, 0.3482



63.3535, 0.2909, 0.3067

Complementary

The Complementary color scheme is a pair of colors which are on the opposite of each other on the color wheel.



63.3535, 0.3378, 0.3324



73.3844, 0.2915, 0.3256

Split Complementary

Split-complementary colors differ from the complementary color scheme. The scheme consists of three colors, the original color and two neighbors of the complement color.



63.3535, 0.2861, 0.3135



63.3535, 0.3378, 0.3324



63.3535, 0.2968, 0.3376

Square

The Square scheme is like the rectangle color scheme, but the four colors are evenly spaced on the color wheel.



63.3535, 0.3378, 0.3324



63.3535, 0.3236, 0.3532



63.3535, 0.2883, 0.3248



63.3535, 0.3015, 0.3059

Rectangle

The Rectangle color scheme consists of four colors that form a rectangle on the color wheel.



63.3535, 0.3378, 0.3324



63.3535, 0.3373, 0.3495



63.3535, 0.2883, 0.3248



63.3535, 0.2886, 0.3084

Sweetspot

The Sweet Spot groups the original color and five complimentary colors.



63.3563, 0.3378, 0.3324



93.6077, 0.3193, 0.3299



63.4489, 0.3162, 0.2976



19.7861, 0.3206, 0.3301



0.0000, 0.0000, 0.0000



21.4041, 0.3127, 0.3290

Same Dimension

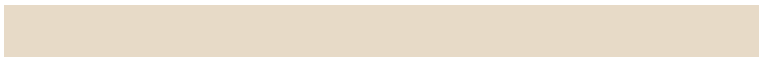
The Same Dimension uses a secret algorithm to generate beautiful new colors.



63.3563, 0.3378, 0.3324



74.9756, 0.3448, 0.3332



71.0788, 0.3354, 0.3493



14.5856, 0.3290, 0.3313



9.9205, 0.6325, 0.3360



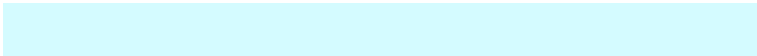
0.8083, 0.6144, 0.3504

Inverse Universe

The Inverse Universe completely reimagines the original color for something new.



73.3844, 0.2915, 0.3256



90.1018, 0.2868, 0.3247



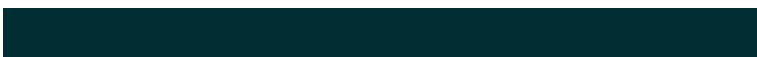
65.1591, 0.2910, 0.3078



16.0915, 0.2982, 0.3267



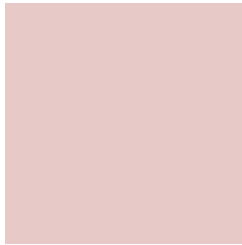
28.9518, 0.2165, 0.2992



2.2075, 0.2178, 0.3039

Previews

White Background



This preview shows how the Yxy color 63.3535, 0.3378, 0.3324 looks on a white background.

Color Contrast Check

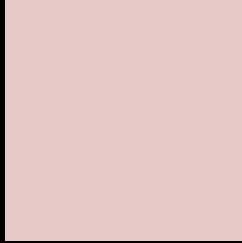
Large Text (above 18pt) WCAG AA × Fail

Any Text WCAG AA × Fail

Large Text (above 18pt) WCAG AAA × Fail

Any Text WCAG AAA × Fail

Black Background



This preview shows how the Yxy color 63.3535, 0.3378, 0.3324 looks on a black background.

Color Contrast Check

Large Text (above 18pt) WCAG AA ✓ Pass

Any Text WCAG AA ✓ Pass

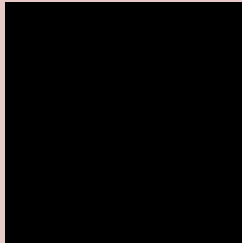
Large Text (above 18pt) WCAG AAA ✓ Pass

Any Text WCAG AAA ✓ Pass

If you want to check with other color combinations, try the [Color Contrast Checker](#).

Yxy 63.3535, 0.3378, 0.3324

Background



This preview shows how black text looks on a background with the Yxy color 63.3535, 0.3378, 0.3324.

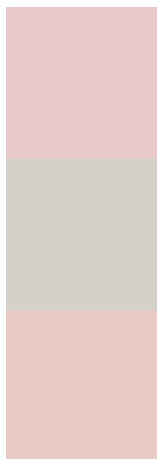


This preview shows how white text looks on a background with the Yxy color 63.3535, 0.3378, 0.3324.

Color Blindness Simulation

Color vision deficiency is a very complex topic, and I could not describe the different causes any better than Wikipedia does, so if you want to learn more, you should check out their [article about color blindness](#).

Dichromacy



Original Color

63.3535, 0.3378, 0.3324

Protanopia

63.6722, 0.3215, 0.3359

Deuteranopia

63.5204, 0.3386, 0.3324



Tritanopia

63.5385, 0.3275, 0.3128

Trichromacy



Original Color

63.3535, 0.3378, 0.3324

Protanomaly

63.5753, 0.3271, 0.3347

Deuteranomaly

63.5204, 0.3386, 0.3324

Tritanomaly

63.5325, 0.3311, 0.3203

Monochromacy



Original Color

63.3535, 0.3378, 0.3324

Achromatopsia

64.4480, 0.3127, 0.3290

Achromatomaly

63.9873, 0.3218, 0.3302

CSS Examples

Text

The CSS property to change the color of the text to Yxy 63.3535, 0.3378, 0.3324 is called "color". The color property can be set on classes, ids or directly on the HTML element.

This example shows how text in the color `rgb(231, 202, 199)` looks like.

```
.text, #text, p{  
    color:rgb(231, 202, 199)  
}
```

If you want to add a text shadow in that color use the text-shadow property, you can generate a text shadow directly with our [CSS Text Shadow Generator](#).

Here you see how black text with a 4 pixel rgb(231, 202, 199) colored shadow looks like.

```
.shadow{ text-shadow: 4px 4px 2px rgb(231, 202, 199) }
```

Border

The CSS property to change the border of an element to Yxy 63.3535, 0.3378, 0.3324 is called "border". The border property can be set on classes, ids or directly on the HTML element.

This example shows the color as border, it can be applied via the CSS property "border" or "border-color".

```
.border, #border, table{ border:4px solid rgb(231, 202, 199) }
```

If only the border color should be changed use the property border-color.

```
.border{ border-color:rgb(231, 202, 199) }
```

If you want to add a box shadow in that color use:

Here you see how a box with a 4 pixel rgb(231, 202, 199) colored shadow looks like.

```
.boxshadow{ -moz-box-shadow:4px 4px 4px  
4px rgb(231, 202, 199); -webkit-box-  
shadow:4px 4px 4px 4px rgb(231, 202, 199);  
box-shadow:4px 4px 4px 4px rgb(231, 202,  
199) }
```


Background

The CSS property to change the background color of an element to Yxy 63.3535, 0.3378, 0.3324 is called "background". The background property can be set on classes, ids or directly on the HTML element.

```
.background, #background, body{  
background: rgb(231, 202, 199) }
```

If only the background color should be changed can be used:

```
.background{ background-color: rgb(231,  
202, 199) }
```

This example shows the color as background, it is applied via the CSS property "background".

To optimize and compress your CSS code, you can use our [online CSS compressor and optimizer](#) based on csstidy. If you want to create a linear or radial gradient as background or border, check our [CSS Gradient Generator](#).

Hey! You found this booklet interesting? Support Converting Colors with the new Membership Option!

The pro membership hides all ads, plus gives you double the colors in the color bucket, and more awesome pro features!

[Learn more, Memberships starting at \\$2.50/m!](#)

**Follow me
on Twitter!**

@ConvertingColor