

Converting Colors

Yxy(63.5222, 0.3392, 0.3439)

Have a look what the booklet for
Yxy(63.5222, 0.3392, 0.3439)
contains.

Yxy(63.5930, 0.3394, 0.3448)	3
Conversions	4
Details	6
Harmonies	12
Previews	24
Color Blindness Simulation	27
CSS Examples	30

Color

Yxy(63.5930, 0.3394, 0.3448)

Conversions

Conversions Part 1

Format	Color
Hex	E2CDBF
RGB	226, 205, 191
RGB Percent	89%, 80%, 75%
CMY	0.1137, 0.1960, 0.2511
CMYK	0.00, 0.09, 0.16, 0.11
HSL	24°, 38%, 82%
HSV	24°, 16%, 89%
XYZ	62.5971, 63.5930, 58.2444
YIQ	209.6830, 17.0100, 0.0980

Conversions

Conversions Part 2

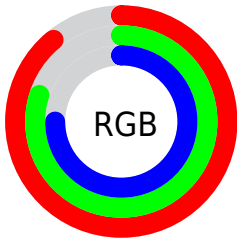
Format	Color
R _Y B	226, 214, 191
Decimal	14863807
CIE Lab	83.75, 5.05, 9.64
CIE LCh	84, 10.877, 62.351
Yxy	63.5930, 0.3394, 0.3448
Android (android.graphics.Color)	4293053887 (0xFFE2CDBF)
YUV	209.6830, -9.2107, 14.3100
Hunter-Lab	79.7452, 0.5618, 12.5174

Details

The Yxy color **63.5930, 0.3394, 0.3448** is a light color, and the websafe version is hex **CCCCCC**. A complement of this color would be **63.6310, 0.2886, 0.3127**, and the grayscale version is **64.2838, 0.3127, 0.3290**.

A 20% lighter version of the original color is **99.4954, 0.3173, 0.3367**, and **32.5142, 0.3452, 0.3482** is the 20% darker color. If you saturate the color by 10%, you get **56.4748, 0.3602, 0.3557**, and if you desaturate by 10%, it is **71.4312, 0.3215, 0.3344**.

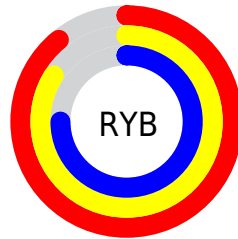
Distribution



Red (89%)

Green (80%)

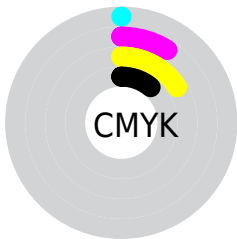
Blue (75%)



Red (89%)

Yellow (84%)

Blue (75%)

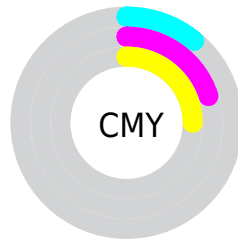


Cyan (0%)

Magenta (9%)

Yellow (16%)

Black (11%)



Cyan (11%)


Magenta (20%)


Yellow (25%)

Brightness & Saturation Gradients


These gradients show how the Yxy color 63.5930, 0.3394, 0.3448 changes by changing the brightness by 10 percent. The first figure shows a shift by +10% for each color and the second figure -10%.


Similar to the brightness gradients but the following saturation gradients show a change of the Yxy color 63.5930, 0.3394, 0.3448 by changing the saturation by 10% instead.


 63.5930, 0.3394,
0.3448

 63.5930, 0.3394,
0.3448


437.7184, 0.3267,
0.3374

 46.3211, 0.3424,
0.3465


 110.0246, 0.3349,
0.3422

 32.4993, 0.3462,
0.3486


139.9531, 0.3332,
0.3412

 21.7431, 0.3510,
0.3513


174.8692, 0.3317,
0.3404

 13.6683, 0.3574,
0.3548

215.1574, 0.3304,
0.3396

 7.8903, 0.3665,
0.3596

261.2020, 0.3293,
0.3390

 4.0248, 0.3801,
0.3666

313.3874, 0.3283,

 1.6875, 0.4026,

0.3384

0.3773

372.0981, 0.3275,
0.3379

0.4155, 0.5550,
0.4450

0.0000, 0.0000,
0.0000

63.5930, 0.3394,
0.3448

63.5930, 0.3394,
0.3448

56.4748, 0.3602,
0.3557

71.4312, 0.3215,
0.3344

50.0471, 0.3842,
0.3667

80.0012, 0.3061,
0.3247

44.2903, 0.4114,
0.3773

89.0802, 0.2950,
0.3195

39.1809, 0.4415,
0.3867

94.9095, 0.2952,
0.3289

■ 34.6936, 0.4735,
0.3937

■ 30.8014, 0.5058,
0.3970

■ 27.4745, 0.5360,
0.3955

■ 24.6791, 0.5615,
0.3885

■ 23.5792, 0.5716,
0.3843

Harmonies

Analogous

The Analogous color harmony consists of three colors that are next to each other on the color wheel.



63.5930, 0.3382, 0.3339



63.5930, 0.3394, 0.3448



63.5930, 0.3333, 0.3518

Triad

The Triadic color harmony groups three colors that are evenly spaced from another and form a triangle on the color wheel.



63.5930, 0.3394, 0.3448



63.5930, 0.2956, 0.3358



63.5930, 0.3033, 0.3065

Complementary

The Complementary color scheme is a pair of colors which are on the opposite of each other on the color wheel.



63.5930, 0.3394, 0.3448



63.6310, 0.2886, 0.3127

Split Complementary

Split-complementary colors differ from the complementary color scheme. The scheme consists of three colors, the original color and two neighbors of the complement color.



63.5930, 0.2923, 0.3066



63.5930, 0.3394, 0.3448



63.5930, 0.2879, 0.3232

Square

The Square scheme is like the rectangle color scheme, but the four colors are evenly spaced on the color wheel.



63.5930, 0.3394, 0.3448



63.5930, 0.3079, 0.3468



63.5930, 0.2867, 0.3125



63.5930, 0.3171, 0.3122

Rectangle

The Rectangle color scheme consists of four colors that form a rectangle on the color wheel.



63.5930, 0.3394, 0.3448



63.5930, 0.3260, 0.3531



63.5930, 0.2867, 0.3125



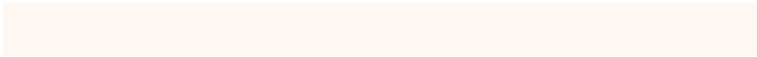
63.5930, 0.2992, 0.3059

Sweetspot

The Sweet Spot groups the original color and five complimentary colors.



63.5958, 0.3394, 0.3448



94.4276, 0.3207, 0.3340



58.1686, 0.3251, 0.3057



20.0480, 0.3219, 0.3347



0.0000, 0.0000, 0.0000



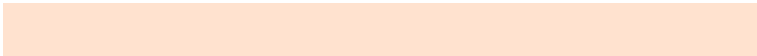
21.4041, 0.3127, 0.3290

Same Dimension

The Same Dimension uses a secret algorithm to generate beautiful new colors.



63.5958, 0.3394, 0.3448



80.1178, 0.3466, 0.3487



72.4386, 0.3365, 0.3637



14.5976, 0.3282, 0.3384



13.6692, 0.5688, 0.3865



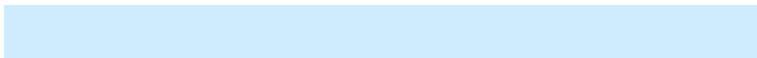
1.1194, 0.5407, 0.4089

Inverse Universe

The Inverse Universe completely reimagines the original color for something new.



63.6310, 0.2886, 0.3127



80.1717, 0.2829, 0.3085



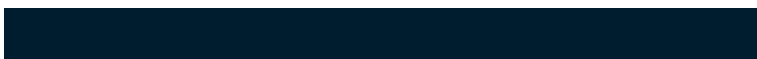
55.3556, 0.2878, 0.2918



14.6025, 0.2981, 0.3194



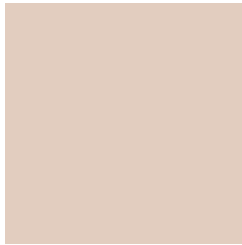
13.3247, 0.1868, 0.1926



1.0975, 0.1933, 0.2158

Previews

White Background



This preview shows how the Yxy color 63.5930, 0.3394, 0.3448 looks on a white background.

Color Contrast Check

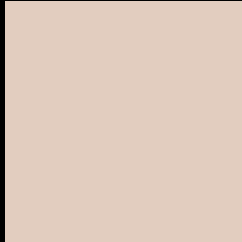
Large Text (above 18pt) WCAG AA × Fail

Any Text WCAG AA × Fail

Large Text (above 18pt) WCAG AAA × Fail

Any Text WCAG AAA × Fail

Black Background



This preview shows how the Yxy color 63.5930, 0.3394, 0.3448 looks on a black background.

Color Contrast Check

Large Text (above 18pt) WCAG AA ✓ Pass

Any Text WCAG AA ✓ Pass

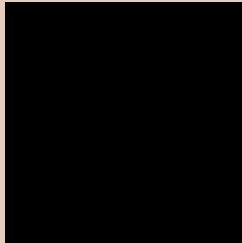
Large Text (above 18pt) WCAG AAA ✓ Pass

Any Text WCAG AAA ✓ Pass

If you want to check with other color combinations, try the [Color Contrast Checker](#).

Yxy 63.5930, 0.3394, 0.3448

Background



This preview shows how black text looks on a background with the Yxy color 63.5930, 0.3394, 0.3448.



This preview shows how white text looks on a background with the Yxy color 63.5930, 0.3394, 0.3448.

Color Blindness Simulation

Color vision deficiency is a very complex topic, and I could not describe the different causes any better than Wikipedia does, so if you want to learn more, you should check out their [article about color blindness](#).

Dichromacy





Tritanopia

63.4411, 0.3228, 0.3116

Trichromacy



Original Color

63.5930, 0.3394, 0.3448

Protanomaly

63.6471, 0.3335, 0.3461

Deuteranomaly

63.6734, 0.3438, 0.3412

Tritanomaly

63.2891, 0.3286, 0.3224

Monochromacy



Original Color

63.5930, 0.3394, 0.3448

Achromatopsia

64.4480, 0.3127, 0.3290

Achromatomaly

64.0225, 0.3223, 0.3347

CSS Examples

Text

The CSS property to change the color of the text to Yxy 63.5930, 0.3394, 0.3448 is called "color". The color property can be set on classes, ids or directly on the HTML element.

This example shows how text in the color `rgb(226, 205, 191)` looks like.

```
.text, #text, p{  
    color:rgb(226, 205, 191)  
}
```

If you want to add a text shadow in that color use the text-shadow property, you can generate a text shadow directly with our [CSS Text Shadow Generator](#).

Here you see how black text with a 4 pixel rgb(226, 205, 191) colored shadow looks like.

```
.shadow{ text-shadow: 4px 4px 2px rgb(226, 205, 191) }
```

Border

The CSS property to change the border of an element to Yxy 63.5930, 0.3394, 0.3448 is called "border". The border property can be set on classes, ids or directly on the HTML element.

This example shows the color as border, it can be applied via the CSS property "border" or "border-color".

```
.border, #border, table{ border:4px solid rgb(226, 205, 191) }
```

If only the border color should be changed use the property `border-color`.

```
.border{ border-color:rgb(226, 205, 191) }
```

If you want to add a box shadow in that color use:

Here you see how a box with a 4 pixel `rgb(226, 205, 191)` colored shadow looks like.

```
.boxshadow{ -moz-box-shadow:4px 4px 4px  
4px rgb(226, 205, 191); -webkit-box-  
shadow:4px 4px 4px 4px rgb(226, 205, 191);  
box-shadow:4px 4px 4px 4px rgb(226, 205,  
191) }
```


Background

The CSS property to change the background color of an element to Yxy 63.5930, 0.3394, 0.3448 is called "background". The background property can be set on classes, ids or directly on the HTML element.

```
.background, #background, body{  
background: rgb(226, 205, 191) }
```

If only the background color should be changed can be used:

```
.background{ background-color: rgb(226,  
205, 191) }
```

This example shows the color as background, it is applied via the CSS property "background".

To optimize and compress your CSS code, you can use our [online CSS compressor and optimizer](#) based on csstidy. If you want to create a linear or radial gradient as background or border, check our [CSS Gradient Generator](#).

Hey! You found this booklet interesting? Support Converting Colors with the new Membership Option!

The pro membership hides all ads, plus gives you double the colors in the color bucket, and more awesome pro features!

[Learn more, Memberships starting at \\$2.50/m!](#)

**Follow me
on Twitter!**

@ConvertingColor