

Converting Colors

Yxy(63.5570, 0.3313, 0.3401)

Have a look what the booklet for
Yxy(63.5570, 0.3313, 0.3401)
contains.

Yxy(63.5003, 0.3315, 0.3403)	3
Conversions	4
Details	6
Harmonies	12
Previews	24
Color Blindness Simulation	27
CSS Examples	30

Color

Yxy(63.5003, 0.3315, 0.3403)

Conversions

Conversions Part 1

Format	Color
Hex	DDCEC4
RGB	221, 206, 196
RGB Percent	87%, 81%, 77%
CMY	0.1333, 0.1922, 0.2312
CMYK	0.00, 0.07, 0.11, 0.13
HSL	24°, 27%, 82%
HSV	24°, 11%, 87%
XYZ	61.8582, 63.5003, 61.2424
YIQ	209.3450, 12.1500, 0.0700

Conversions

Conversions Part 2

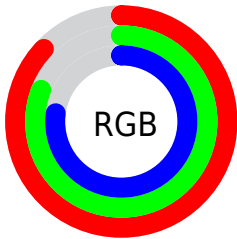
Format	Color
R _Y B	221, 213, 196
Decimal	14536388
CIE Lab	83.70, 3.54, 6.81
CIE LCh	84, 7.677, 62.553
Yxy	63.5003, 0.3315, 0.3403
Android (android.graphics.Color)	4292726468 (0xFFDDCEC4)
YUV	209.3450, -6.5791, 10.2214
Hunter-Lab	79.6871, -0.8892, 10.2144

Details

The Yxy color **63.5003, 0.3315, 0.3403** is a light color, and the websafe version is hex **CCCCCC**. A complement of this color would be **63.5711, 0.2953, 0.3174**, and the grayscale version is **64.0387, 0.3127, 0.3290**.

A 20% lighter version of the original color is **99.8718, 0.3139, 0.3309**, and **32.5165, 0.3367, 0.3439** is the 20% darker color. If you saturate the color by 10%, you get **56.4423, 0.3511, 0.3509**, and if you desaturate by 10%, it is **71.2526, 0.3147, 0.3303**.

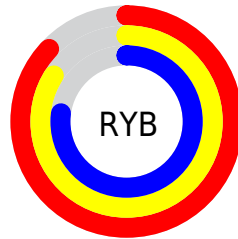
Distribution



Red (87%)

Green (81%)

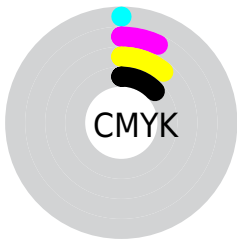
Blue (77%)



Red (87%)

Yellow (84%)

Blue (77%)

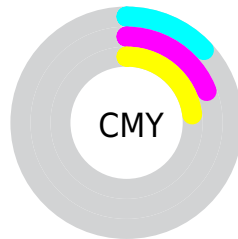


Cyan (0%)

Magenta (7%)

Yellow (11%)

Black (13%)



Cyan (13%)

Magenta (19%)

Yellow (23%)

Brightness & Saturation Gradients

These gradients show how the Yxy color 63.5003, 0.3315, 0.3403 changes by changing the brightness by 10 percent. The first figure shows a shift by +10% for each color and the second figure -10%.

Similar to the brightness gradients but the following saturation gradients show a change of the Yxy color 63.5003, 0.3315, 0.3403 by changing the saturation by 10% instead.

■ 63.5003, 0.3315,
0.3403

■ 63.5003, 0.3315,
0.3403

437.3829, 0.3226,
0.3350

■ 46.2461, 0.3336,
0.3415

109.8910, 0.3283,
0.3384

■ 32.4400, 0.3362,
0.3431

139.7962, 0.3271,
0.3377

■ 21.6978, 0.3397,
0.3450

174.6872, 0.3261,
0.3371

■ 13.6350, 0.3442,
0.3476

214.9484, 0.3252,
0.3366

■ 7.8673, 0.3506,
0.3512

260.9642, 0.3244,
0.3361

■ 4.0101, 0.3602,
0.3564

313.1189, 0.3237,

■ 1.6792, 0.3763,

0.3357

0.3648

371.7970, 0.3231,
0.3353

0.4102, 0.5373,
0.4627

0.0000, 0.0000,
0.0000

63.5003, 0.3315,
0.3403

63.5003, 0.3315,
0.3403

56.4423, 0.3511,
0.3509

71.2526, 0.3147,
0.3303

50.0504, 0.3737,
0.3619

79.7096, 0.3003,
0.3209

44.3067, 0.3995,
0.3727

88.4106, 0.2920,
0.3196

39.1892, 0.4285,
0.3827

94.1130, 0.2923,
0.3289

■ 34.6746, 0.4599,
0.3908

■ 30.7380, 0.4923,
0.3958

■ 27.3522, 0.5238,
0.3965

■ 24.4868, 0.5516,
0.3918

■ 22.3835, 0.5719,
0.3841

Harmonies

Analogous

The Analogous color harmony consists of three colors that are next to each other on the color wheel.



63.5003, 0.3307, 0.3326



63.5003, 0.3315, 0.3403



63.5003, 0.3272, 0.3451

Triad

The Triadic color harmony groups three colors that are evenly spaced from another and form a triangle on the color wheel.



63.5003, 0.3315, 0.3403



63.5003, 0.3006, 0.3338



63.5003, 0.3062, 0.3130

Complementary

The Complementary color scheme is a pair of colors which are on the opposite of each other on the color wheel.



63.5003, 0.3315, 0.3403



63.5711, 0.2953, 0.3174

Split Complementary

Split-complementary colors differ from the complementary color scheme. The scheme consists of three colors, the original color and two neighbors of the complement color.



63.5003, 0.2983, 0.3131



63.5003, 0.3315, 0.3403



63.5003, 0.2951, 0.3249

Square

The Square scheme is like the rectangle color scheme, but the four colors are evenly spaced on the color wheel.



63.5003, 0.3315, 0.3403



63.5003, 0.3093, 0.3414



63.5003, 0.2943, 0.3174



63.5003, 0.3159, 0.3171

Rectangle

The Rectangle color scheme consists of four colors that form a rectangle on the color wheel.



63.5003, 0.3315, 0.3403



63.5003, 0.3221, 0.3459



63.5003, 0.2943, 0.3174



63.5003, 0.3032, 0.3126

Sweetspot

The Sweet Spot groups the original color and five complimentary colors.



63.5031, 0.3315, 0.3403



96.6187, 0.3174, 0.3319



59.5947, 0.3211, 0.3118



20.4902, 0.3187, 0.3327



0.0000, 0.0000, 0.0000



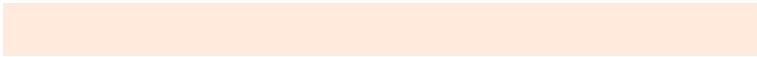
21.4041, 0.3127, 0.3290

Same Dimension

The Same Dimension uses a secret algorithm to generate beautiful new colors.



63.5031, 0.3315, 0.3403



84.9775, 0.3367, 0.3432



69.5511, 0.3299, 0.3536



13.8999, 0.3282, 0.3384



13.2099, 0.5691, 0.3863



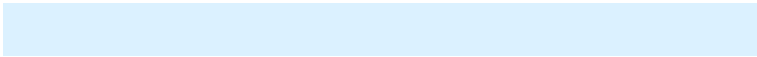
1.0214, 0.5393, 0.4100

Inverse Universe

The Inverse Universe completely reimagines the original color for something new.



63.5711, 0.2953, 0.3174



85.0920, 0.2909, 0.3143



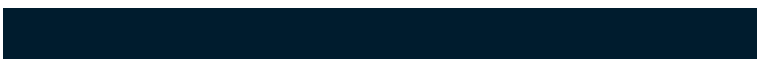
57.7855, 0.2950, 0.3031



13.9123, 0.2982, 0.3194



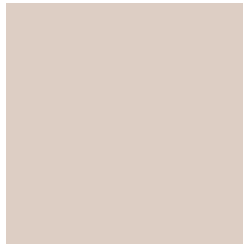
12.9751, 0.1871, 0.1933



1.0074, 0.1938, 0.2178

Previews

White Background



This preview shows how the Yxy color 63.5003, 0.3315, 0.3403 looks on a white background.

Color Contrast Check

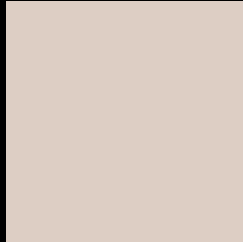
Large Text (above 18pt) WCAG AA × Fail

Any Text WCAG AA × Fail

Large Text (above 18pt) WCAG AAA × Fail

Any Text WCAG AAA × Fail

Black Background



This preview shows how the Yxy color 63.5003, 0.3315, 0.3403 looks on a black background.

Color Contrast Check

Large Text (above 18pt) WCAG AA ✓ Pass

Any Text WCAG AA ✓ Pass

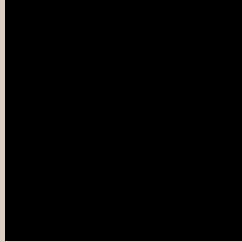
Large Text (above 18pt) WCAG AAA ✓ Pass

Any Text WCAG AAA ✓ Pass

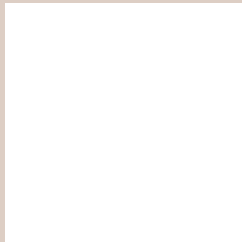
If you want to check with other color combinations, try the [Color Contrast Checker](#).

Yxy 63.5003, 0.3315, 0.3403

Background



This preview shows how black text looks on a background with the Yxy color 63.5003, 0.3315, 0.3403.

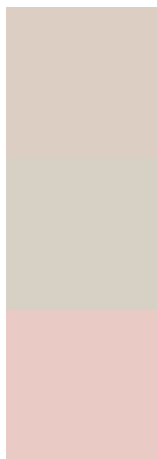


This preview shows how white text looks on a background with the Yxy color 63.5003, 0.3315, 0.3403.

Color Blindness Simulation

Color vision deficiency is a very complex topic, and I could not describe the different causes any better than Wikipedia does, so if you want to learn more, you should check out their [article about color blindness](#).

Dichromacy



Original Color

63.5003, 0.3315, 0.3403

Protanopia

63.5900, 0.3259, 0.3416

Deuteranopia

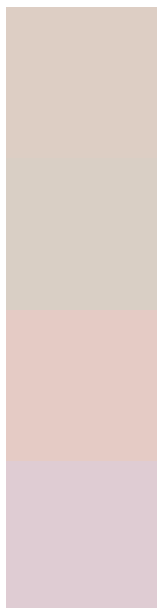
63.5959, 0.3409, 0.3346



Tritanopia

63.6736, 0.3174, 0.3114

Trichromacy



Original Color

63.5003, 0.3315, 0.3403

Protanomaly

63.4086, 0.3275, 0.3404

Deuteranomaly

63.4011, 0.3376, 0.3357

Tritanomaly

63.5769, 0.3223, 0.3213

Monochromacy



Original Color

63.5003, 0.3315, 0.3403

Achromatopsia

63.7597, 0.3127, 0.3290

Achromatomaly

63.6175, 0.3193, 0.3336

CSS Examples

Text

The CSS property to change the color of the text to Yxy 63.5003, 0.3315, 0.3403 is called "color". The color property can be set on classes, ids or directly on the HTML element.

This example shows how text in the color `rgb(221, 206, 196)` looks like.

```
.text, #text, p{  
    color:rgb(221, 206, 196)  
}
```

If you want to add a text shadow in that color use the text-shadow property, you can generate a text shadow directly with our [CSS Text Shadow Generator](#).

Here you see how black text with a 4 pixel rgb(221, 206, 196) colored shadow looks like.

```
.shadow{ text-shadow: 4px 4px 2px rgb(221, 206, 196) }
```

Border

The CSS property to change the border of an element to Yxy 63.5003, 0.3315, 0.3403 is called "border". The border property can be set on classes, ids or directly on the HTML element.

This example shows the color as border, it can be applied via the CSS property "border" or "border-color".

```
.border, #border, table{ border:4px solid rgb(221, 206, 196) }
```

If only the border color should be changed use the property `border-color`.

```
.border{ border-color:rgb(221, 206, 196) }
```

If you want to add a box shadow in that color use:

Here you see how a box with a 4 pixel `rgb(221, 206, 196)` colored shadow looks like.

```
.boxshadow{ -moz-box-shadow:4px 4px 4px 4px rgb(221, 206, 196); -webkit-box-shadow:4px 4px 4px 4px rgb(221, 206, 196); box-shadow:4px 4px 4px 4px rgb(221, 206, 196) }
```


Background

The CSS property to change the background color of an element to Yxy 63.5003, 0.3315, 0.3403 is called "background". The background property can be set on classes, ids or directly on the HTML element.

```
.background, #background, body{  
background: rgb(221, 206, 196) }
```

If only the background color should be changed can be used:

```
.background{ background-color: rgb(221,  
206, 196) }
```

This example shows the color as background, it is applied via the CSS property "background".

To optimize and compress your CSS code, you can use our [online CSS compressor and optimizer](#) based on csstidy. If you want to create a linear or radial gradient as background or border, check our [CSS Gradient Generator](#).

Hey! You found this booklet interesting? Support Converting Colors with the new Membership Option!

The pro membership hides all ads, plus gives you double the colors in the color bucket, and more awesome pro features!

[Learn more, Memberships starting at \\$2.50/m!](#)

**Follow me
on Twitter!**

@ConvertingColor