

# Converting Colors

$Yxy(63.6103, 0.3356, 0.3403)$

Have a look what the booklet for  
Yxy(63.6103, 0.3356, 0.3403)  
contains.

<b>Yxy(63.6103, 0.3356, 0.3403)</b> .....	3
<b>Conversions</b> .....	4
<b>Details</b> .....	6
<b>Harmonies</b> .....	12
<b>Previews</b> .....	24
<b>Color Blindness Simulation</b> .....	27
<b>CSS Examples</b> .....	30

# Color

**Yxy(63.6103, 0.3356, 0.3403)**

# Conversions

## Conversions Part 1

Format	Color
Hex	E1CDC3
RGB	225, 205, 195
RGB Percent	88%, 80%, 76%
CMY	0.1176, 0.1961, 0.2354
CMYK	0.00, 0.09, 0.13, 0.12
HSL	20°, 33%, 82%
HSV	20°, 13%, 88%
XYZ	62.7318, 63.6103, 60.5821
YIQ	209.8400, 15.1300, 1.1300

# Conversions

## Conversions Part 2

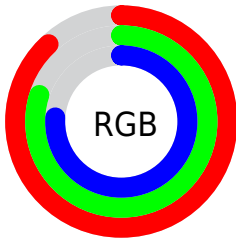
Format	Color
R <sub>Y</sub> B	225, 210, 195
Decimal	14798275
CIE Lab	83.76, 5.32, 7.51
CIE LCh	84, 9.201, 54.674
Yxy	63.6103, 0.3356, 0.3403
Android (android.graphics.Color)	4292988355 (0xFFE1CDC3)
YUV	209.8400, -7.3161, 13.2953
Hunter-Lab	79.7561, 0.8252, 10.7930

# Details

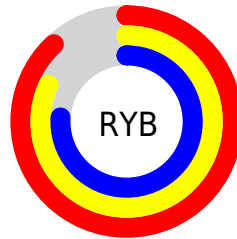
The Yxy color **63.6103, 0.3356, 0.3403** is a light color, and the websafe version is hex **CCCCCC**. A complement of this color would be **65.6209, 0.2921, 0.3174**, and the grayscale version is **64.3807, 0.3127, 0.3290**.

A 20% lighter version of the original color is **99.8083, 0.3144, 0.3319**, and **32.6024, 0.3422, 0.3438** is the 20% darker color. If you saturate the color by 10%, you get **55.8425, 0.3564, 0.3493**, and if you desaturate by 10%, it is **72.2236, 0.3180, 0.3317**.

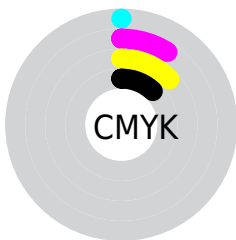
# Distribution



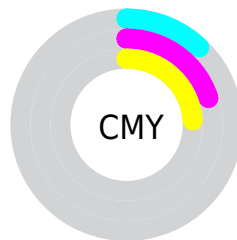
- Red (88%)
- Green (80%)
- Blue (76%)



- Red (88%)
- Yellow (82%)
- Blue (76%)



- Cyan (0%)
- Magenta (9%)
- Yellow (13%)
- Black (12%)



- Cyan (12%)
- Magenta (20%)
- Yellow (24%)

# Brightness & Saturation Gradients

These gradients show how the Yxy color 63.6103, 0.3356, 0.3403 changes by changing the brightness by 10 percent. The first figure shows a shift by +10% for each color and the second figure -10%.

Similar to the brightness gradients but the following saturation gradients show a change of the Yxy color 63.6103, 0.3356, 0.3403 by changing the saturation by 10% instead.



63.6103, 0.3356,  
0.3403

63.6103, 0.3356,  
0.3403

437.7810, 0.3247,  
0.3350

46.3351, 0.3382,  
0.3415

110.0495, 0.3318,  
0.3385

32.5103, 0.3414,  
0.3430

139.9823, 0.3303,  
0.3378

21.7516, 0.3455,  
0.3449

174.9031, 0.3290,  
0.3371

13.6745, 0.3511,  
0.3474

215.1964, 0.3279,  
0.3366

7.8946, 0.3589,  
0.3508

261.2463, 0.3270,  
0.3361

4.0276, 0.3707,  
0.3558

313.4375, 0.3261,

1.6890, 0.3903,

0.3357

0.3635

372.1543, 0.3254,  
0.3354

0.4165, 0.5580,  
0.4420

0.0000, 0.0000,  
0.0000

63.6103, 0.3356,  
0.3403

63.6103, 0.3356,  
0.3403

55.8425, 0.3564,  
0.3493

72.2236, 0.3180,  
0.3317

48.8856, 0.3807,  
0.3586

81.6986, 0.3031,  
0.3238

42.7151, 0.4088,  
0.3676

91.5714, 0.2945,  
0.3239

37.3020, 0.4405,  
0.3757

94.7489, 0.2946,  
0.3289

■ 32.6152, 0.4751,  
0.3817

■ 28.6214, 0.5107,  
0.3846

■ 25.2842, 0.5447,  
0.3830

■ 22.5631, 0.5738,  
0.3763

■ 21.0658, 0.5897,  
0.3699

# Harmonies

## Analogous

The Analogous color harmony consists of three colors that are next to each other on the color wheel.



63.6103, 0.3329, 0.3306



63.6103, 0.3356, 0.3403



63.6103, 0.3320, 0.3472

# Triad

The Triadic color harmony groups three colors that are evenly spaced from another and form a triangle on the color wheel.



63.6103, 0.3356, 0.3403



63.6103, 0.3006, 0.3374



63.6103, 0.3021, 0.3094

# Complementary

The Complementary color scheme is a pair of colors which are on the opposite of each other on the color wheel.



63.6103, 0.3356, 0.3403



65.6209, 0.2921, 0.3174

# Split Complementary

Split-complementary colors differ from the complementary color scheme. The scheme consists of three colors, the original color and two neighbors of the complement color.



63.6103, 0.2937, 0.3108



63.6103, 0.3356, 0.3403



63.6103, 0.2929, 0.3268

# Square

The Square scheme is like the rectangle color scheme, but the four colors are evenly spaced on the color wheel.



63.6103, 0.3356, 0.3403



63.6103, 0.3117, 0.3457



63.6103, 0.2904, 0.3171



63.6103, 0.3134, 0.3131



# Rectangle

The Rectangle color scheme consists of four colors that form a rectangle on the color wheel.



63.6103, 0.3356, 0.3403



63.6103, 0.3266, 0.3492



63.6103, 0.2904, 0.3171



63.6103, 0.2988, 0.3093

# Sweetspot

The Sweet Spot groups the original color and five complimentary colors.



63.6131, 0.3356, 0.3403



95.1032, 0.3191, 0.3323



59.9312, 0.3217, 0.3069



20.1633, 0.3203, 0.3329



0.0000, 0.0000, 0.0000



21.4041, 0.3127, 0.3290

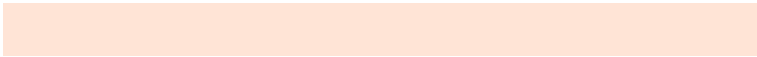


# Same Dimension

The Same Dimension uses a secret algorithm to generate beautiful new colors.



63.6131, 0.3356, 0.3403



81.5200, 0.3410, 0.3428



71.1349, 0.3334, 0.3566



14.4451, 0.3284, 0.3369



12.3307, 0.5869, 0.3722



1.0156, 0.5569, 0.3960

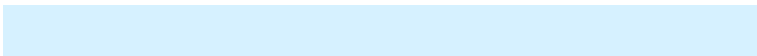


# Inverse Universe

The Inverse Universe completely reimagines the original color for something new.



65.6209, 0.2921, 0.3174



84.6746, 0.2878, 0.3148



58.3319, 0.2916, 0.2998



14.7604, 0.2982, 0.3210



15.8925, 0.1934, 0.2163

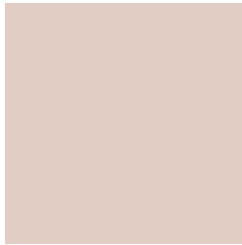


1.2643, 0.1988, 0.2357



# Previews

## White Background



This preview shows how the Yxy color 63.6103, 0.3356, 0.3403 looks on a white background.

## Color Contrast Check

Large Text (above 18pt) WCAG AA × Fail

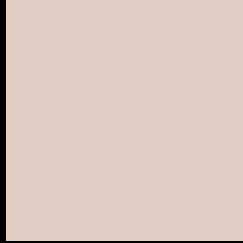
Any Text WCAG AA × Fail

Large Text (above 18pt) WCAG AAA × Fail

Any Text WCAG AAA × Fail



# Black Background



This preview shows how the Yxy color 63.6103, 0.3356, 0.3403 looks on a black background.

## Color Contrast Check

Large Text (above 18pt) WCAG AA ✓ Pass

Any Text WCAG AA ✓ Pass

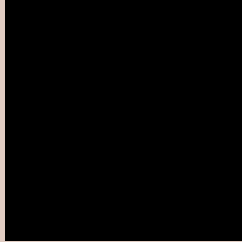
Large Text (above 18pt) WCAG AAA ✓ Pass

Any Text WCAG AAA ✓ Pass

If you want to check with other color combinations, try the [Color Contrast Checker](#).

**Yxy 63.6103, 0.3356, 0.3403**

## **Background**



This preview shows how black text looks on a background with the Yxy color 63.6103, 0.3356, 0.3403.

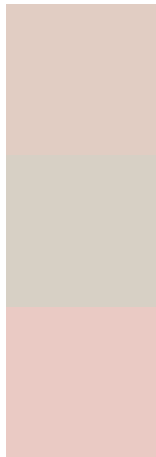


This preview shows how white text looks on a background with the Yxy color 63.6103, 0.3356, 0.3403.

# Color Blindness Simulation

Color vision deficiency is a very complex topic, and I could not describe the different causes any better than Wikipedia does, so if you want to learn more, you should check out their [article about color blindness](#).

## Dichromacy



### Original Color

63.6103, 0.3356, 0.3403

### Protanopia

63.5900, 0.3259, 0.3416

### Deuteranopia

63.7190, 0.3425, 0.3357



## Tritanopia

63.7448, 0.3220, 0.3127

# Trichromacy



## Original Color

63.6103, 0.3356, 0.3403

## Protanomaly

63.6712, 0.3298, 0.3415

## Deuteranomaly

63.6863, 0.3399, 0.3368

## Tritanomaly

63.6462, 0.3270, 0.3224

# Monochromacy



## Original Color

63.6103, 0.3356, 0.3403

## Achromatopsia

64.4480, 0.3127, 0.3290

## Achromatomaly

63.9666, 0.3201, 0.3324

# CSS Examples

## Text

The CSS property to change the color of the text to Yxy 63.6103, 0.3356, 0.3403 is called "color". The color property can be set on classes, ids or directly on the HTML element.

This example shows how text in the color `rgb(225, 205, 195)` looks like.

```
.text, #text, p{  
    color:rgb(225, 205, 195)  
}
```

If you want to add a text shadow in that color use the text-shadow property, you can generate a text shadow directly with our [CSS Text Shadow Generator](#).

Here you see how black text with a 4 pixel rgb(225, 205, 195) colored shadow looks like.

```
.shadow{ text-shadow: 4px 4px 2px rgb(225, 205, 195) }
```

## Border

The CSS property to change the border of an element to Yxy 63.6103, 0.3356, 0.3403 is called "border". The border property can be set on classes, ids or directly on the HTML element.

This example shows the color as border, it can be applied via the CSS property "border" or "border-color".

```
.border, #border, table{ border:4px solid rgb(225, 205, 195) }
```

If only the border color should be changed use the property `border-color`.

```
.border{ border-color:rgb(225, 205, 195) }
```

If you want to add a box shadow in that color use:

Here you see how a box with a 4 pixel `rgb(225, 205, 195)` colored shadow looks like.

```
.boxshadow{ -moz-box-shadow:4px 4px 4px 4px rgb(225, 205, 195); -webkit-box-shadow:4px 4px 4px 4px rgb(225, 205, 195); box-shadow:4px 4px 4px 4px rgb(225, 205, 195) }
```



# Background

The CSS property to change the background color of an element to Yxy 63.6103, 0.3356, 0.3403 is called "background". The background property can be set on classes, ids or directly on the HTML element.

```
.background, #background, body{  
background: rgb(225, 205, 195) }
```

If only the background color should be changed can be used:

```
.background{ background-color: rgb(225,  
205, 195) }
```

This example shows the color as background, it is applied via the CSS property "background".

To optimize and compress your CSS code, you can use our [online CSS compressor and optimizer](#) based on csstidy. If you want to create a linear or radial gradient as background or border, check our [CSS Gradient Generator](#).

Hey! You found this booklet interesting? Support Converting Colors with the new Membership Option!

The pro membership hides all ads, plus gives you double the colors in the color bucket, and more awesome pro features!

**[Learn more, Memberships starting at \\$2.50/m!](#)**

**Follow me  
on Twitter!**

@ConvertingColor