

# Converting Colors

Yxy(63.6247, 0.3292, 0.3385)

Have a look what the booklet for  
Yxy(63.6247, 0.3292, 0.3385)  
contains.

<b>Yxy(63.4355, 0.3293, 0.3381)</b> .....	3
<b><i>Conversions</i></b> .....	4
<b><i>Details</i></b> .....	6
<b><i>Harmonies</i></b> .....	12
<b><i>Previews</i></b> .....	24
<b><i>Color Blindness Simulation</i></b> .....	27
<b><i>CSS Examples</i></b> .....	30

# Color

**Yxy(63.4355, 0.3293, 0.3381)**

# Conversions

## Conversions Part 1

Format	Color
Hex	DCCEC6
RGB	220, 206, 198
RGB Percent	86%, 81%, 78%
CMY	0.1371, 0.1922, 0.2236
CMYK	0.00, 0.06, 0.10, 0.14
HSL	22°, 24%, 82%
HSV	22°, 10%, 86%
XYZ	61.7844, 63.4355, 62.4036
YIQ	209.2740, 10.9120, 0.4800

# Conversions

## Conversions Part 2

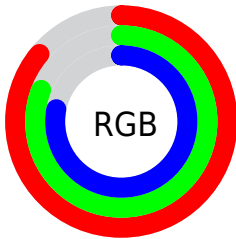
Format	Color
R <sub>Y</sub> B	220, 211, 198
Decimal	14470854
CIE Lab	83.67, 3.51, 5.72
CIE LCh	84, 6.710, 58.436
Yxy	63.4355, 0.3293, 0.3381
Android (android.graphics.Color)	4292660934 (0xFFDCCEC6)
YUV	209.2740, -5.5581, 9.4067
Hunter-Lab	79.6464, -0.9127, 9.2983

# Details

The Yxy color **63.4355, 0.3293, 0.3381** is a light color, and the websafe version is hex **CCCCCC**. A complement of this color would be **64.2676, 0.2973, 0.3197**, and the grayscale version is **63.9835, 0.3127, 0.3290**.

A 20% lighter version of the original color is **100.0000, 0.3127, 0.3290**, and **32.4694, 0.3337, 0.3410** is the 20% darker color. If you saturate the color by 10%, you get **56.0502, 0.3487, 0.3478**, and if you desaturate by 10%, it is **71.5747, 0.3127, 0.3290**.

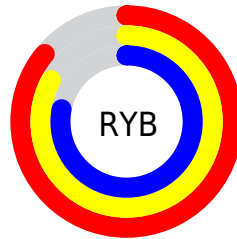
# Distribution



Red (86%)

Green (81%)

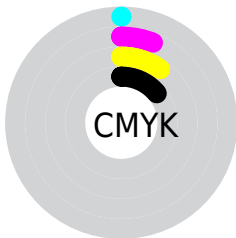
Blue (78%)



Red (86%)

Yellow (83%)

Blue (78%)

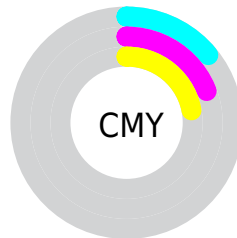


Cyan (0%)

Magenta (6%)

Yellow (10%)

Black (14%)



Cyan (14%)

Magenta (19%)

Yellow (22%)

# Brightness & Saturation Gradients

These gradients show how the Yxy color 63.4355, 0.3293, 0.3381 changes by changing the brightness by 10 percent. The first figure shows a shift by +10% for each color and the second figure -10%.

Similar to the brightness gradients but the following saturation gradients show a change of the Yxy color 63.4355, 0.3293, 0.3381 by changing the saturation by 10% instead.



63.4355, 0.3293,  
0.3381

63.4355, 0.3293,  
0.3381

437.1483, 0.3214,  
0.3338

46.1936, 0.3312,  
0.3391

109.7976, 0.3265,  
0.3366

32.3986, 0.3335,  
0.3403

139.6865, 0.3254,  
0.3360

21.6662, 0.3365,  
0.3419

174.5600, 0.3245,  
0.3355

13.6118, 0.3405,  
0.3440

214.8023, 0.3237,  
0.3351

7.8512, 0.3462,  
0.3469

260.7979, 0.3230,  
0.3347

3.9999, 0.3547,  
0.3511

312.9312, 0.3224,

1.6735, 0.3690,

0.3344

0.3579

371.5865, 0.3219,  
0.3341

0.4064, 0.5124,  
0.4412

0.0000, 0.0000,  
0.0000

63.4355, 0.3293,  
0.3381

63.4355, 0.3293,  
0.3381

56.0502, 0.3487,  
0.3478

71.5747, 0.3127,  
0.3290

49.3886, 0.3714,  
0.3577

80.4804, 0.2987,  
0.3206

43.4304, 0.3976,  
0.3677

89.5828, 0.2915,  
0.3218

38.1511, 0.4272,  
0.3769

93.9603, 0.2917,  
0.3289

■ 33.5251, 0.4597,  
0.3845

■ 29.5245, 0.4938,  
0.3892

■ 26.1192, 0.5273,  
0.3898

■ 23.2760, 0.5572,  
0.3852

■ 20.9547, 0.5817,  
0.3763

# Harmonies

## Analogous

The Analogous color harmony consists of three colors that are next to each other on the color wheel.



63.4355, 0.3279, 0.3312



63.4355, 0.3293, 0.3381



63.4355, 0.3262, 0.3427

# Triad

The Triadic color harmony groups three colors that are evenly spaced from another and form a triangle on the color wheel.



63.4355, 0.3293, 0.3381



63.4355, 0.3030, 0.3342



63.4355, 0.3059, 0.3148

# Complementary

The Complementary color scheme is a pair of colors which are on the opposite of each other on the color wheel.



63.4355, 0.3293, 0.3381



64.2676, 0.2973, 0.3197

# Split Complementary

Split-complementary colors differ from the complementary color scheme. The scheme consists of three colors, the original color and two neighbors of the complement color.



63.4355, 0.2994, 0.3154



63.4355, 0.3293, 0.3381



63.4355, 0.2977, 0.3265

# Square

The Square scheme is like the rectangle color scheme, but the four colors are evenly spaced on the color wheel.



63.4355, 0.3293, 0.3381



63.4355, 0.3109, 0.3405



63.4355, 0.2964, 0.3196



63.4355, 0.3144, 0.3179



# Rectangle

The Rectangle color scheme consists of four colors that form a rectangle on the color wheel.



63.4355, 0.3293, 0.3381



63.4355, 0.3219, 0.3438



63.4355, 0.2964, 0.3196



63.4355, 0.3034, 0.3146

# Sweetspot

The Sweet Spot groups the original color and five complimentary colors.



63.4383, 0.3293, 0.3381



96.4495, 0.3174, 0.3317



60.3706, 0.3195, 0.3130



20.4446, 0.3187, 0.3324



0.0000, 0.0000, 0.0000



21.4041, 0.3127, 0.3290

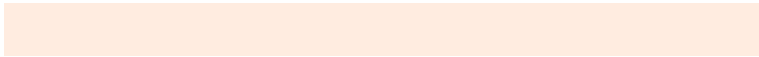


# Same Dimension

The Same Dimension uses a secret algorithm to generate beautiful new colors.



63.4383, 0.3293, 0.3381



86.3802, 0.3331, 0.3401



68.7797, 0.3280, 0.3500



13.8226, 0.3282, 0.3376



12.4883, 0.5789, 0.3785



0.9697, 0.5479, 0.4032

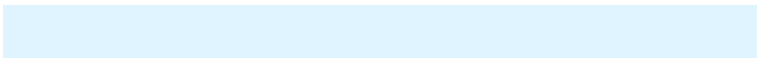


# Inverse Universe

The Inverse Universe completely reimagines the original color for something new.



64.2676, 0.2973, 0.3197



87.7586, 0.2940, 0.3177



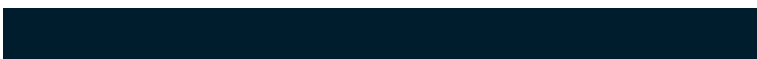
59.0817, 0.2972, 0.3071



13.9921, 0.2982, 0.3203



14.2644, 0.1906, 0.2060

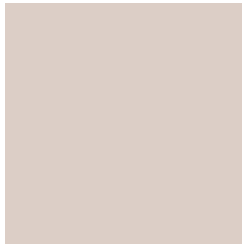


1.0858, 0.1968, 0.2283



# Previews

## White Background



This preview shows how the Yxy color 63.4355, 0.3293, 0.3381 looks on a white background.

## Color Contrast Check

Large Text (above 18pt) WCAG AA × Fail

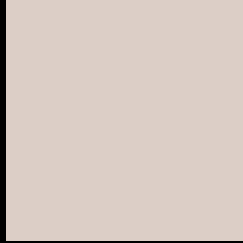
Any Text WCAG AA × Fail

Large Text (above 18pt) WCAG AAA × Fail

Any Text WCAG AAA × Fail



# Black Background



This preview shows how the Yxy color 63.4355, 0.3293, 0.3381 looks on a black background.

## Color Contrast Check

Large Text (above 18pt) WCAG AA ✓ Pass

Any Text WCAG AA ✓ Pass

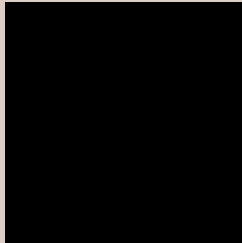
Large Text (above 18pt) WCAG AAA ✓ Pass

Any Text WCAG AAA ✓ Pass

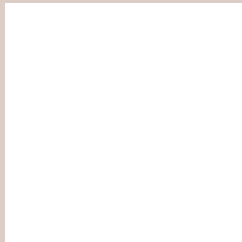
If you want to check with other color combinations, try the [Color Contrast Checker](#).

**Yxy 63.4355, 0.3293, 0.3381**

## **Background**



This preview shows how black text looks on a background with the Yxy color 63.4355, 0.3293, 0.3381.

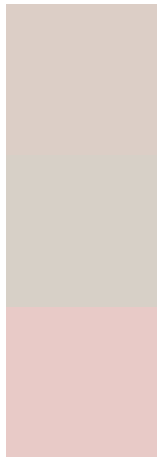


This preview shows how white text looks on a background with the Yxy color 63.4355, 0.3293, 0.3381.

# Color Blindness Simulation

Color vision deficiency is a very complex topic, and I could not describe the different causes any better than Wikipedia does, so if you want to learn more, you should check out their [article about color blindness](#).

## Dichromacy



### Original Color

63.4355, 0.3293, 0.3381

### Protanopia

63.6823, 0.3244, 0.3393

### Deuteranopia

63.5204, 0.3386, 0.3324



## Tritanopia

63.5143, 0.3166, 0.3114

# Trichromacy



## Original Color

63.4355, 0.3293, 0.3381

## Protanomaly

63.5009, 0.3261, 0.3381

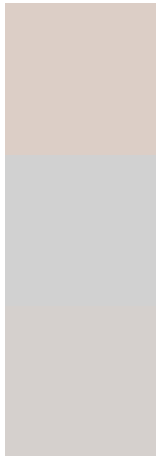
## Deuteranomaly

63.3294, 0.3352, 0.3335

## Tritanomaly

63.4185, 0.3215, 0.3212

# Monochromacy



## Original Color

63.4355, 0.3293, 0.3381

## Achromatopsia

63.7597, 0.3127, 0.3290

## Achromatomaly

63.6657, 0.3186, 0.3324

# CSS Examples

## Text

The CSS property to change the color of the text to Yxy 63.4355, 0.3293, 0.3381 is called "color". The color property can be set on classes, ids or directly on the HTML element.

This example shows how text in the color `rgb(220, 206, 198)` looks like.

```
.text, #text, p{  
    color:rgb(220, 206, 198)  
}
```

If you want to add a text shadow in that color use the text-shadow property, you can generate a text shadow directly with our [CSS Text Shadow Generator](#).

Here you see how black text with a 4 pixel rgb(220, 206, 198) colored shadow looks like.

```
.shadow{ text-shadow: 4px 4px 2px rgb(220, 206, 198) }
```

## Border

The CSS property to change the border of an element to Yxy 63.4355, 0.3293, 0.3381 is called "border". The border property can be set on classes, ids or directly on the HTML element.

This example shows the color as border, it can be applied via the CSS property "border" or "border-color".

```
.border, #border, table{ border:4px solid rgb(220, 206, 198) }
```

If only the border color should be changed use the property `border-color`.

```
.border{ border-color:rgb(220, 206, 198) }
```

If you want to add a box shadow in that color use:

Here you see how a box with a 4 pixel `rgb(220, 206, 198)` colored shadow looks like.

```
.boxshadow{ -moz-box-shadow:4px 4px 4px 4px rgb(220, 206, 198); -webkit-box-shadow:4px 4px 4px 4px rgb(220, 206, 198); box-shadow:4px 4px 4px 4px rgb(220, 206, 198) }
```



# Background

The CSS property to change the background color of an element to Yxy 63.4355, 0.3293, 0.3381 is called "background". The background property can be set on classes, ids or directly on the HTML element.

```
.background, #background, body{  
background: rgb(220, 206, 198) }
```

If only the background color should be changed can be used:

```
.background{ background-color: rgb(220,  
206, 198) }
```

This example shows the color as background, it is applied via the CSS property "background".

To optimize and compress your CSS code, you can use our [online CSS compressor and optimizer](#) based on csstidy. If you want to create a linear or radial gradient as background or border, check our [CSS Gradient Generator](#).

Hey! You found this booklet interesting? Support Converting Colors with the new Membership Option!

The pro membership hides all ads, plus gives you double the colors in the color bucket, and more awesome pro features!

**[Learn more, Memberships starting at \\$2.50/m!](#)**

**Follow me  
on Twitter!**

@ConvertingColor