

Converting Colors

Yxy(63.8008, 0.3271, 0.3269)

Have a look what the booklet for
Yxy(63.8008, 0.3271, 0.3269)
contains.

Yxy(63.6495, 0.3275, 0.3268)	3
<i>Conversions</i>	4
<i>Details</i>	6
<i>Harmonies</i>	12
<i>Previews</i>	24
<i>Color Blindness Simulation</i>	27
<i>CSS Examples</i>	30

Color

Yxy(63.6495, 0.3275, 0.3268)

Conversions

Conversions Part 1

Format	Color
Hex	E1CCCE
RGB	225, 204, 206
RGB Percent	88%, 80%, 81%
CMY	0.1177, 0.2000, 0.1921
CMYK	0.00, 0.09, 0.08, 0.12
HSL	354°, 26%, 84%
HSV	354°, 9%, 88%
XYZ	63.7858, 63.6495, 67.3306
YIQ	210.5070, 11.8740, 5.0740

Conversions

Conversions Part 2

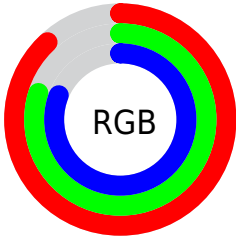
Format	Color
R _Y B	225, 204, 206
Decimal	14798030
CIE Lab	83.78, 7.66, 1.65
CIE LCh	84, 7.832, 12.148
Yxy	63.6495, 0.3275, 0.3268
Android (android.graphics.Color)	4292988110 (0xFFE1CCCE)
YUV	210.5070, -2.2220, 12.7104
Hunter-Lab	79.7806, 3.0974, 5.8089

Details

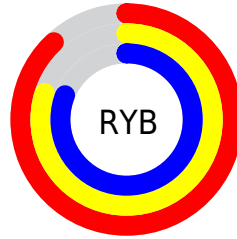
The Yxy color $63.6495, 0.3275, 0.3268$ is a light color, and the websafe version is hex `CCCCCC`. A complement of this color would be $72.0129, 0.2996, 0.3312$, and the grayscale version is $64.8105, 0.3127, 0.3290$.

A 20% lighter version of the original color is $100.0000, 0.3127, 0.3290$, and $32.6257, 0.3314, 0.3261$ is the 20% darker color. If you saturate the color by 10%, you get $52.7924, 0.3471, 0.3243$, and if you desaturate by 10%, it is $76.1851, 0.3118, 0.3292$.

Distribution



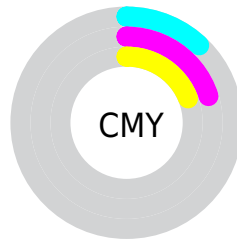
- Red (88%)
- Green (80%)
- Blue (81%)



- Red (88%)
- Yellow (80%)
- Blue (81%)



- Cyan (0%)
- Magenta (9%)
- Yellow (8%)
- Black (12%)





- Cyan (12%)
- Magenta (20%)
- Yellow (19%)

Brightness & Saturation Gradients

These gradients show how the Yxy color 63.6495, 0.3275, 0.3268 changes by changing the brightness by 10 percent. The first figure shows a shift by +10% for each color and the second figure -10%.

Similar to the brightness gradients but the following saturation gradients show a change of the Yxy color 63.6495, 0.3275, 0.3268 by changing the saturation by 10% instead.

 63.6495, 0.3275,
0.3268

 63.6495, 0.3275,
0.3268

437.9228, 0.3205,
0.3279

 46.3668, 0.3292,
0.3265


110.1060, 0.3250,
0.3272

 32.5354, 0.3312,
0.3262


140.0486, 0.3241,
0.3273

 21.7708, 0.3339,
0.3258


174.9801, 0.3233,
0.3275

 13.6886, 0.3375,
0.3252

215.2847, 0.3226,
0.3276

 7.9044, 0.3425,
0.3243

261.3469, 0.3219,
0.3277

 4.0338, 0.3500,
0.3230

313.5510, 0.3214,

 1.6925, 0.3627,

0.3277

0.3207

372.2815, 0.3209,
0.3278

0.4188, 0.4351,
0.3115

0.0000, 0.0000,
0.0000

63.6495, 0.3275,
0.3268

63.6495, 0.3275,
0.3268

52.7924, 0.3471,
0.3243

76.1851, 0.3118,
0.3292

43.5346, 0.3715,
0.3217

90.4573, 0.2991,
0.3313

35.8030, 0.4015,
0.3192

94.7469, 0.2946,
0.3289

29.5155, 0.4376,
0.3170

■ 24.5826, 0.4795,
0.3156

■ 20.9043, 0.5248,
0.3154

■ 18.3673, 0.5689,
0.3170

■ 16.8375, 0.6055,
0.3204

■ 16.1016, 0.6295,
0.3247

Harmonies

Analogous

The Analogous color harmony consists of three colors that are next to each other on the color wheel.



63.6495, 0.3191, 0.3189



63.6495, 0.3275, 0.3268



63.6495, 0.3319, 0.3354

Triad

The Triadic color harmony groups three colors that are evenly spaced from another and form a triangle on the color wheel.



63.6495, 0.3275, 0.3268



63.6495, 0.3161, 0.3450



63.6495, 0.2947, 0.3153

Complementary

The Complementary color scheme is a pair of colors which are on the opposite of each other on the color wheel.



63.6495, 0.3275, 0.3268



72.0129, 0.2996, 0.3312

Split Complementary

Split-complementary colors differ from the complementary color scheme. The scheme consists of three colors, the original color and two neighbors of the complement color.



63.6495, 0.2940, 0.3221



63.6495, 0.3275, 0.3268



63.6495, 0.3062, 0.3395

Square

The Square scheme is like the rectangle color scheme, but the four colors are evenly spaced on the color wheel.



63.6495, 0.3275, 0.3268



63.6495, 0.3252, 0.3461



63.6495, 0.2981, 0.3310



63.6495, 0.3002, 0.3123

Rectangle

The Rectangle color scheme consists of four colors that form a rectangle on the color wheel.



63.6495, 0.3275, 0.3268



63.6495, 0.3319, 0.3404



63.6495, 0.2981, 0.3310



63.6495, 0.2939, 0.3172

Sweetspot

The Sweet Spot groups the original color and five complimentary colors.



63.6523, 0.3275, 0.3268



94.7784, 0.3172, 0.3283



64.2956, 0.3122, 0.3061



19.9953, 0.3184, 0.3281



0.0000, 0.0000, 0.0000



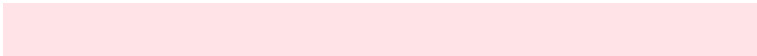
21.4041, 0.3127, 0.3290

Same Dimension

The Same Dimension uses a secret algorithm to generate beautiful new colors.



63.6523, 0.3275, 0.3268



81.8642, 0.3306, 0.3264



67.6547, 0.3280, 0.3383



13.7218, 0.3277, 0.3268



9.2645, 0.6286, 0.3236



0.6496, 0.6005, 0.3082

Inverse Universe

The Inverse Universe completely reimagines the original color for something new.



63.6523, 0.3275, 0.3268



81.8642, 0.3306, 0.3264



67.6936, 0.2983, 0.3195



13.7218, 0.3277, 0.3268



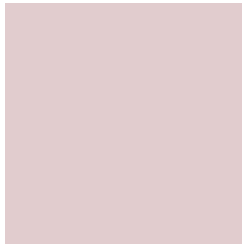
9.2645, 0.6286, 0.3236



0.6496, 0.6005, 0.3082

Previews

White Background



This preview shows how the Yxy color 63.6495, 0.3275, 0.3268 looks on a white background.

Color Contrast Check

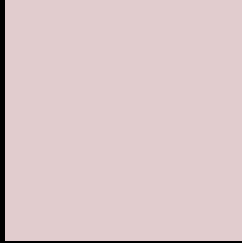
Large Text (above 18pt) WCAG AA × Fail

Any Text WCAG AA × Fail

Large Text (above 18pt) WCAG AAA × Fail

Any Text WCAG AAA × Fail

Black Background



This preview shows how the Yxy color 63.6495, 0.3275, 0.3268 looks on a black background.

Color Contrast Check

Large Text (above 18pt) WCAG AA ✓ Pass

Any Text WCAG AA ✓ Pass

Large Text (above 18pt) WCAG AAA ✓ Pass

Any Text WCAG AAA ✓ Pass

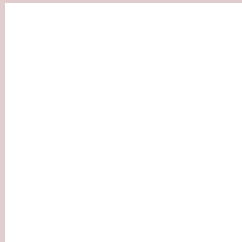
If you want to check with other color combinations, try the [Color Contrast Checker](#).

Yxy 63.6495, 0.3275, 0.3268

Background



This preview shows how black text looks on a background with the Yxy color 63.6495, 0.3275, 0.3268.



This preview shows how white text looks on a background with the Yxy color 63.6495, 0.3275, 0.3268.

Color Blindness Simulation

Color vision deficiency is a very complex topic, and I could not describe the different causes any better than Wikipedia does, so if you want to learn more, you should check out their [article about color blindness](#).

Dichromacy



Original Color

63.6495, 0.3275, 0.3268

Protanopia

63.8120, 0.3165, 0.3290

Deuteranopia

63.5203, 0.3317, 0.3247



Tritanopia

63.6339, 0.3205, 0.3115

Trichromacy



Original Color

63.6495, 0.3275, 0.3268

Protanomaly

63.8824, 0.3203, 0.3290

Deuteranomaly

63.6621, 0.3300, 0.3257

Tritanomaly

63.7357, 0.3225, 0.3169

Monochromacy



Original Color

63.6495, 0.3275, 0.3268

Achromatopsia

65.1406, 0.3127, 0.3290

Achromatomaly

64.3141, 0.3180, 0.3279

CSS Examples

Text

The CSS property to change the color of the text to Yxy 63.6495, 0.3275, 0.3268 is called "color". The color property can be set on classes, ids or directly on the HTML element.

This example shows how text in the color `rgb(225, 204, 206)` looks like.

```
.text, #text, p{  
    color:rgb(225, 204, 206)  
}
```

If you want to add a text shadow in that color use the text-shadow property, you can generate a text shadow directly with our [CSS Text Shadow Generator](#).

Here you see how black text with a 4 pixel rgb(225, 204, 206) colored shadow looks like.

```
.shadow{ text-shadow: 4px 4px 2px rgb(225, 204, 206) }
```

Border

The CSS property to change the border of an element to Yxy 63.6495, 0.3275, 0.3268 is called "border". The border property can be set on classes, ids or directly on the HTML element.

This example shows the color as border, it can be applied via the CSS property "border" or "border-color".

```
.border, #border, table{ border:4px solid rgb(225, 204, 206) }
```

If only the border color should be changed use the property `border-color`.

```
.border{ border-color:rgb(225, 204, 206) }
```

If you want to add a box shadow in that color use:

Here you see how a box with a 4 pixel `rgb(225, 204, 206)` colored shadow looks like.

```
.boxshadow{ -moz-box-shadow:4px 4px 4px  
4px rgb(225, 204, 206); -webkit-box-  
shadow:4px 4px 4px 4px rgb(225, 204, 206);  
box-shadow:4px 4px 4px 4px rgb(225, 204,  
206) }
```


Background

The CSS property to change the background color of an element to Yxy 63.6495, 0.3275, 0.3268 is called "background". The background property can be set on classes, ids or directly on the HTML element.

```
.background, #background, body{  
background: rgb(225, 204, 206) }
```

If only the background color should be changed can be used:

```
.background{ background-color: rgb(225,  
204, 206) }
```

This example shows the color as background, it is applied via the CSS property "background".

To optimize and compress your CSS code, you can use our [online CSS compressor and optimizer](#) based on csstidy. If you want to create a linear or radial gradient as background or border, check our [CSS Gradient Generator](#).

Hey! You found this booklet interesting? Support Converting Colors with the new Membership Option!

The pro membership hides all ads, plus gives you double the colors in the color bucket, and more awesome pro features!

[Learn more, Memberships starting at \\$2.50/m!](#)

**Follow me
on Twitter!**

@ConvertingColor