

# Converting Colors

$Yxy(63.8137, 0.3390, 0.3283)$

Have a look what the booklet for  
Yxy(63.8137, 0.3390, 0.3283)  
contains.

<b>Yxy(63.6997, 0.3388, 0.3280)</b> .....	3
<b>Conversions</b> .....	4
<b>Details</b> .....	6
<b>Harmonies</b> .....	12
<b>Previews</b> .....	24
<b>Color Blindness Simulation</b> .....	27
<b>CSS Examples</b> .....	30

# Color

**Yxy(63.6997, 0.3388, 0.3280)**

# Conversions

## Conversions Part 1

Format	Color
Hex	EBC9CA
RGB	235, 201, 202
RGB Percent	92%, 79%, 79%
CMY	0.0786, 0.2117, 0.2078
CMYK	0.00, 0.14, 0.14, 0.08
HSL	358°, 46%, 85%
HSV	358°, 14%, 92%
XYZ	65.7971, 63.6997, 64.7096
YIQ	211.2800, 19.9430, 7.5190

# Conversions

## Conversions Part 2

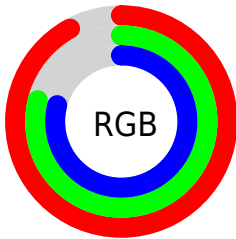
Format	Color
R <sub>Y</sub> B	235, 201, 202
Decimal	15452618
CIE Lab	83.81, 12.10, 3.93
CIE LCh	84, 12.721, 18.013
Yxy	63.6997, 0.3388, 0.3280
Android (android.graphics.Color)	4293642698 (0xFFEBC9CA)
YUV	211.2800, -4.5750, 20.8024
Hunter-Lab	79.8121, 7.4843, 7.7977

# Details

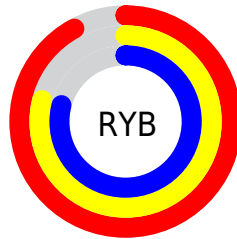
The Yxy color **63.6997, 0.3388, 0.3280** is a light color, and the websafe version is hex **FFCCCC**. A complement of this color would be **77.7485, 0.2913, 0.3300**, and the grayscale version is **65.3562, 0.3127, 0.3290**.

A 20% lighter version of the original color is **100.0000, 0.3127, 0.3290**, and **32.5893, 0.3456, 0.3277** is the 20% darker color. If you saturate the color by 10%, you get **52.5697, 0.3625, 0.3273**, and if you desaturate by 10%, it is **76.6706, 0.3199, 0.3287**.

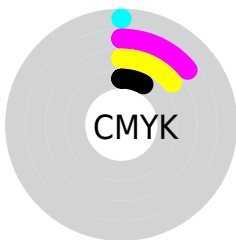
# Distribution



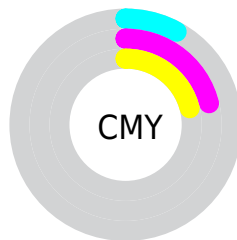
- Red (92%)
- Green (79%)
- Blue (79%)



- Red (92%)
- Yellow (79%)
- Blue (79%)



- Cyan (0%)
- Magenta (14%)
- Yellow (14%)
- Black (8%)



- Cyan (8%)
- Magenta (21%)
- Yellow (21%)

# Brightness & Saturation Gradients

These gradients show how the Yxy color 63.6997, 0.3388, 0.3280 changes by changing the brightness by 10 percent. The first figure shows a shift by +10% for each color and the second figure -10%.

Similar to the brightness gradients but the following saturation gradients show a change of the Yxy color 63.6997, 0.3388, 0.3280 by changing the saturation by 10% instead.




 63.6997, 0.3388,  
0.3280

 63.6997, 0.3388,  
0.3280


438.1044, 0.3264,  
0.3286

 46.4075, 0.3417,  
0.3278


110.1783, 0.3344,  
0.3282

 32.5675, 0.3454,  
0.3276


140.1336, 0.3327,  
0.3283

 21.7953, 0.3501,  
0.3273


175.0786, 0.3313,  
0.3284

 13.7066, 0.3565,  
0.3268

215.3978, 0.3300,  
0.3284

 7.9169, 0.3654,  
0.3261

261.4756, 0.3290,  
0.3285

 4.0418, 0.3788,  
0.3249

313.6963, 0.3280,

 1.6970, 0.4013,

0.3285

372.4445, 0.3271,  
0.3286

0.3223

0.4217, 0.5347,  
0.3239

0.0000, 0.0000,  
0.0000

63.6997, 0.3388,  
0.3280

63.6997, 0.3388,  
0.3280

52.5697, 0.3625,  
0.3273

76.6706, 0.3199,  
0.3287

43.1892, 0.3920,  
0.3266

91.5514, 0.3047,  
0.3294

35.4719, 0.4279,  
0.3259

96.3940, 0.3005,  
0.3290

29.3206, 0.4703,  
0.3255

■ 24.6283, 0.5172,  
0.3254

■ 21.2744, 0.5640,  
0.3259

■ 19.1192, 0.6038,  
0.3269

■ 17.9923, 0.6298,  
0.3283

■ 17.6690, 0.6378,  
0.3287

# Harmonies

## Analogous

The Analogous color harmony consists of three colors that are next to each other on the color wheel.



63.6997, 0.3261, 0.3149



63.6997, 0.3388, 0.3280



63.6997, 0.3444, 0.3416

# Triad

The Triadic color harmony groups three colors that are evenly spaced from another and form a triangle on the color wheel.



63.6997, 0.3388, 0.3280



63.6997, 0.3148, 0.3541



63.6997, 0.2849, 0.3053

# Complementary

The Complementary color scheme is a pair of colors which are on the opposite of each other on the color wheel.



63.6997, 0.3388, 0.3280



77.7485, 0.2913, 0.3300

# Split Complementary

Split-complementary colors differ from the complementary color scheme. The scheme consists of three colors, the original color and two neighbors of the complement color.



63.6997, 0.2821, 0.3151



63.6997, 0.3388, 0.3280



63.6997, 0.2991, 0.3437

# Square

The Square scheme is like the rectangle color scheme, but the four colors are evenly spaced on the color wheel.



63.6997, 0.3388, 0.3280



63.6997, 0.3303, 0.3572



63.6997, 0.2872, 0.3292



63.6997, 0.2949, 0.3020



# Rectangle

The Rectangle color scheme consists of four colors that form a rectangle on the color wheel.



63.6997, 0.3388, 0.3280



63.6997, 0.3432, 0.3494



63.6997, 0.2872, 0.3292



63.6997, 0.2830, 0.3079

# Sweetspot

The Sweet Spot groups the original color and five complimentary colors.



63.7025, 0.3388, 0.3280



93.0423, 0.3191, 0.3287



65.2414, 0.3135, 0.2933



19.6438, 0.3204, 0.3287



0.0000, 0.0000, 0.0000



21.4041, 0.3127, 0.3290



# Same Dimension

The Same Dimension uses a secret algorithm to generate beautiful new colors.



63.7025, 0.3388, 0.3280



72.9717, 0.3445, 0.3278



71.4239, 0.3371, 0.3461



15.0611, 0.3288, 0.3284



9.8413, 0.6369, 0.3282



0.7753, 0.6284, 0.3236



# Inverse Universe

The Inverse Universe completely reimagines the original color for something new.



63.7025, 0.3388, 0.3280



72.9717, 0.3445, 0.3278



69.1409, 0.2902, 0.3113



15.0611, 0.3288, 0.3284



9.8413, 0.6369, 0.3282

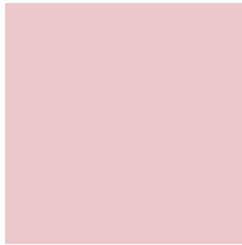


0.7753, 0.6284, 0.3236



# Previews

## White Background



This preview shows how the Yxy color 63.6997, 0.3388, 0.3280 looks on a white background.

## Color Contrast Check

Large Text (above 18pt) WCAG AA × Fail

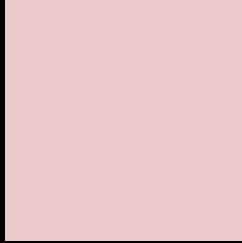
Any Text WCAG AA × Fail

Large Text (above 18pt) WCAG AAA × Fail

Any Text WCAG AAA × Fail



# Black Background



This preview shows how the Yxy color 63.6997, 0.3388, 0.3280 looks on a black background.

## Color Contrast Check

Large Text (above 18pt) WCAG AA ✓ Pass

Any Text WCAG AA ✓ Pass

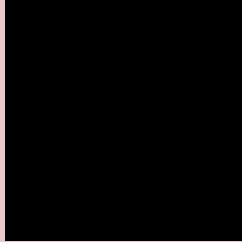
Large Text (above 18pt) WCAG AAA ✓ Pass

Any Text WCAG AAA ✓ Pass

If you want to check with other color combinations, try the [Color Contrast Checker](#).

**Yxy 63.6997, 0.3388, 0.3280**

## **Background**



This preview shows how black text looks on a background with the Yxy color 63.6997, 0.3388, 0.3280.



This preview shows how white text looks on a background with the Yxy color 63.6997, 0.3388, 0.3280.

# Color Blindness Simulation

Color vision deficiency is a very complex topic, and I could not describe the different causes any better than Wikipedia does, so if you want to learn more, you should check out their [article about color blindness](#).

## Dichromacy



### Original Color

63.6997, 0.3388, 0.3280

### Protanopia

63.7141, 0.3179, 0.3313

### Deuteranopia

63.6611, 0.3363, 0.3291



## Tritanopia

63.7577, 0.3308, 0.3119

# Trichromacy



## Original Color

63.6997, 0.3388, 0.3280

## Protanomaly

63.4426, 0.3250, 0.3290

## Deuteranomaly

63.8290, 0.3371, 0.3291

## Tritanomaly

63.7946, 0.3337, 0.3183

# Monochromacy



## Original Color

63.6997, 0.3388, 0.3280

## Achromatopsia

65.1406, 0.3127, 0.3290

## Achromatomaly

64.3954, 0.3219, 0.3279

# CSS Examples

## Text

The CSS property to change the color of the text to Yxy 63.6997, 0.3388, 0.3280 is called "color". The color property can be set on classes, ids or directly on the HTML element.

This example shows how text in the color `rgb(235, 201, 202)` looks like.

```
.text, #text, p{  
    color:rgb(235, 201, 202)  
}
```

If you want to add a text shadow in that color use the text-shadow property, you can generate a text shadow directly with our [CSS Text Shadow Generator](#).

Here you see how black text with a 4 pixel rgb(235, 201, 202) colored shadow looks like.

```
.shadow{ text-shadow: 4px 4px 2px rgb(235, 201, 202) }
```

## Border

The CSS property to change the border of an element to Yxy 63.6997, 0.3388, 0.3280 is called "border". The border property can be set on classes, ids or directly on the HTML element.

This example shows the color as border, it can be applied via the CSS property "border" or "border-color".

```
.border, #border, table{ border:4px solid rgb(235, 201, 202) }
```

If only the border color should be changed use the property `border-color`.

```
.border{ border-color:rgb(235, 201, 202) }
```

If you want to add a box shadow in that color use:

Here you see how a box with a 4 pixel `rgb(235, 201, 202)` colored shadow looks like.

```
.boxshadow{ -moz-box-shadow:4px 4px 4px  
4px rgb(235, 201, 202); -webkit-box-  
shadow:4px 4px 4px 4px rgb(235, 201, 202);  
box-shadow:4px 4px 4px 4px rgb(235, 201,  
202) }
```



# Background

The CSS property to change the background color of an element to Yxy 63.6997, 0.3388, 0.3280 is called "background". The background property can be set on classes, ids or directly on the HTML element.

```
.background, #background, body{  
background: rgb(235, 201, 202) }
```

If only the background color should be changed can be used:

```
.background{ background-color: rgb(235,  
201, 202) }
```

This example shows the color as background, it is applied via the CSS property "background".

To optimize and compress your CSS code, you can use our [online CSS compressor and optimizer](#) based on csstidy. If you want to create a linear or radial gradient as background or border, check our [CSS Gradient Generator](#).

Hey! You found this booklet interesting? Support Converting Colors with the new Membership Option!

The pro membership hides all ads, plus gives you double the colors in the color bucket, and more awesome pro features!

**[Learn more, Memberships starting at \\$2.50/m!](#)**

**Follow me  
on Twitter!**

@ConvertingColor