

Converting Colors

$Yxy(63.8729, 0.3278, 0.3335)$

Have a look what the booklet for
Yxy(63.8729, 0.3278, 0.3335)
contains.

Yxy(63.9365, 0.3279, 0.3335)	3
Conversions	4
Details	6
Harmonies	12
Previews	24
Color Blindness Simulation	27
CSS Examples	30

Color

Yxy(63.9365, 0.3279, 0.3335)

Conversions

Conversions Part 1

Format	Color
Hex	DECECA
RGB	222, 206, 202
RGB Percent	87%, 81%, 79%
CMY	0.1293, 0.1922, 0.2078
CMYK	0.00, 0.07, 0.09, 0.13
HSL	12°, 23%, 83%
HSV	12°, 9%, 87%
XYZ	62.8629, 63.9365, 64.9142
YIQ	210.3280, 10.8200, 2.1480

Conversions

Conversions Part 2

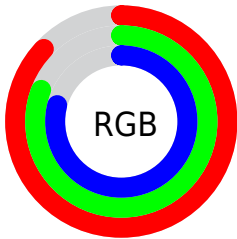
Format	Color
R _Y B	222, 207, 202
Decimal	14601930
CIE Lab	83.93, 4.89, 3.97
CIE LCh	84, 6.298, 39.070
Yxy	63.9365, 0.3279, 0.3335
Android (android.graphics.Color)	4292792010 (0xFFDECECA)
YUV	210.3280, -4.1057, 10.2363
Hunter-Lab	79.9603, 0.4020, 7.8388

Details

The Yxy color **63.9365, 0.3279, 0.3335** is a light color, and the websafe version is hex **CCCCCC**. A complement of this color would be **68.0000, 0.2988, 0.3245**, and the grayscale version is **64.7016, 0.3127, 0.3290**.

A 20% lighter version of the original color is **100.0000, 0.3127, 0.3290**, and **32.8101, 0.3319, 0.3349** is the 20% darker color. If you saturate the color by 10%, you get **54.8774, 0.3481, 0.3388**, and if you desaturate by 10%, it is **74.1216, 0.3112, 0.3285**.

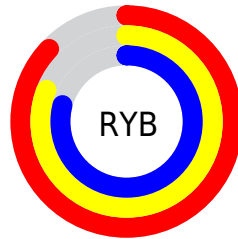
Distribution



Red (87%)

Green (81%)

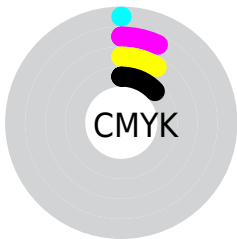
Blue (79%)



Red (87%)

Yellow (81%)

Blue (79%)

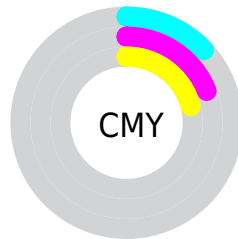


Cyan (0%)

Magenta (7%)

Yellow (9%)

Black (13%)



Cyan (13%)

Magenta (19%)

Yellow (21%)

Brightness & Saturation Gradients

These gradients show how the Yxy color 63.9365, 0.3279, 0.3335 changes by changing the brightness by 10 percent. The first figure shows a shift by +10% for each color and the second figure -10%.

Similar to the brightness gradients but the following saturation gradients show a change of the Yxy color 63.9365, 0.3279, 0.3335 by changing the saturation by 10% instead.

63.9365, 0.3279,
0.3335

63.9365, 0.3279,
0.3335

438.9603, 0.3207,
0.3314

46.5992, 0.3296,
0.3340

110.5195, 0.3254,
0.3328

32.7190, 0.3317,
0.3346

140.5340, 0.3244,
0.3325

21.9112, 0.3345,
0.3353

175.5431, 0.3235,
0.3323

13.7917, 0.3381,
0.3363

215.9310, 0.3228,
0.3320

7.9759, 0.3433,
0.3376

262.0824, 0.3222,
0.3319

4.0795, 0.3510,
0.3396

314.3814, 0.3216,

1.7182, 0.3640,

0.3317

0.3426

373.2126, 0.3211,
0.3316

0.4354, 0.4576,
0.3737

0.0000, 0.0000,
0.0000

63.9365, 0.3279,
0.3335

63.9365, 0.3279,
0.3335

54.8774, 0.3481,
0.3388

74.1216, 0.3112,
0.3285

46.8974, 0.3725,
0.3444

85.4609, 0.2974,
0.3240

39.9583, 0.4017,
0.3499

94.2734, 0.2929,
0.3289

34.0169, 0.4358,
0.3550

■ 29.0267, 0.4746,
0.3588

■ 24.9373, 0.5161,
0.3606

■ 21.6939, 0.5568,
0.3593

■ 19.2349, 0.5919,
0.3545

■ 17.4860, 0.6174,
0.3469

Harmonies

Analogous

The Analogous color harmony consists of three colors that are next to each other on the color wheel.



63.9365, 0.3240, 0.3265



63.9365, 0.3279, 0.3335



63.9365, 0.3277, 0.3394

Triad

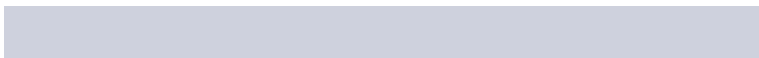
The Triadic color harmony groups three colors that are evenly spaced from another and form a triangle on the color wheel.



63.9365, 0.3279, 0.3335



63.9365, 0.3083, 0.3380



63.9365, 0.3021, 0.3156

Complementary

The Complementary color scheme is a pair of colors which are on the opposite of each other on the color wheel.



63.9365, 0.3279, 0.3335



68.0000, 0.2988, 0.3245

Split Complementary

Split-complementary colors differ from the complementary color scheme. The scheme consists of three colors, the original color and two neighbors of the complement color.



63.9365, 0.2980, 0.3185



63.9365, 0.3279, 0.3335



63.9365, 0.3015, 0.3314

Square

The Square scheme is like the rectangle color scheme, but the four colors are evenly spaced on the color wheel.



63.9365, 0.3279, 0.3335



63.9365, 0.3162, 0.3421



63.9365, 0.2978, 0.3242



63.9365, 0.3091, 0.3163

Rectangle

The Rectangle color scheme consists of four colors that form a rectangle on the color wheel.



63.9365, 0.3279, 0.3335



63.9365, 0.3252, 0.3419



63.9365, 0.2978, 0.3242



63.9365, 0.3003, 0.3162

Sweetspot

The Sweet Spot groups the original color and five complimentary colors.



63.9393, 0.3279, 0.3335



95.6691, 0.3175, 0.3305



62.8629, 0.3164, 0.3110



20.2346, 0.3189, 0.3309



0.0000, 0.0000, 0.0000



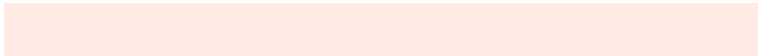
21.4041, 0.3127, 0.3290

Same Dimension

The Same Dimension uses a secret algorithm to generate beautiful new colors.



63.9393, 0.3279, 0.3335



84.8150, 0.3318, 0.3346



68.7507, 0.3268, 0.3442



14.1397, 0.3287, 0.3337



10.4262, 0.6173, 0.3480



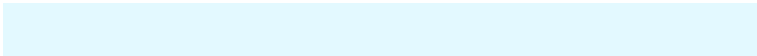
0.8486, 0.5882, 0.3712

Inverse Universe

The Inverse Universe completely reimagines the original color for something new.



68.0000, 0.2988, 0.3245



91.5544, 0.2957, 0.3234



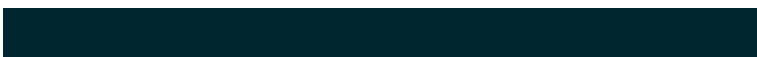
63.1179, 0.2988, 0.3133



15.0849, 0.2982, 0.3242



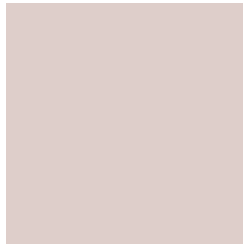
22.1682, 0.2067, 0.2641



1.6559, 0.2098, 0.2752

Previews

White Background



This preview shows how the Yxy color 63.9365, 0.3279, 0.3335 looks on a white background.

Color Contrast Check

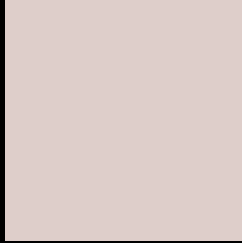
Large Text (above 18pt) WCAG AA × Fail

Any Text WCAG AA × Fail

Large Text (above 18pt) WCAG AAA × Fail

Any Text WCAG AAA × Fail

Black Background



This preview shows how the Yxy color 63.9365, 0.3279, 0.3335 looks on a black background.

Color Contrast Check

Large Text (above 18pt) WCAG AA ✓ Pass

Any Text WCAG AA ✓ Pass

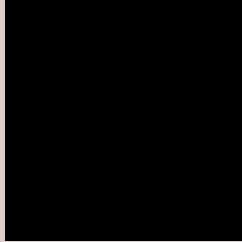
Large Text (above 18pt) WCAG AAA ✓ Pass

Any Text WCAG AAA ✓ Pass

If you want to check with other color combinations, try the [Color Contrast Checker](#).

Yxy 63.9365, 0.3279, 0.3335

Background



This preview shows how black text looks on a background with the Yxy color 63.9365, 0.3279, 0.3335.



This preview shows how white text looks on a background with the Yxy color 63.9365, 0.3279, 0.3335.

Color Blindness Simulation

Color vision deficiency is a very complex topic, and I could not describe the different causes any better than Wikipedia does, so if you want to learn more, you should check out their [article about color blindness](#).

Dichromacy



Original Color

63.9365, 0.3279, 0.3335

Protanopia

63.7197, 0.3208, 0.3347

Deuteranopia

63.7087, 0.3355, 0.3280



Tritanopia

63.6736, 0.3174, 0.3114

Trichromacy



Original Color

63.9365, 0.3279, 0.3335

Protanomaly

63.6892, 0.3232, 0.3336

Deuteranomaly

63.5176, 0.3322, 0.3291

Tritanomaly

63.6778, 0.3208, 0.3191

Monochromacy



Original Color

63.9365, 0.3279, 0.3335

Achromatopsia

64.4480, 0.3127, 0.3290

Achromatomaly

64.4021, 0.3179, 0.3313

CSS Examples

Text

The CSS property to change the color of the text to Yxy 63.9365, 0.3279, 0.3335 is called "color". The color property can be set on classes, ids or directly on the HTML element.

This example shows how text in the color `rgb(222, 206, 202)` looks like.

```
.text, #text, p{  
    color:rgb(222, 206, 202)  
}
```

If you want to add a text shadow in that color use the text-shadow property, you can generate a text shadow directly with our [CSS Text Shadow Generator](#).

Here you see how black text with a 4 pixel rgb(222, 206, 202) colored shadow looks like.

```
.shadow{ text-shadow: 4px 4px 2px rgb(222, 206, 202) }
```

Border

The CSS property to change the border of an element to Yxy 63.9365, 0.3279, 0.3335 is called "border". The border property can be set on classes, ids or directly on the HTML element.

This example shows the color as border, it can be applied via the CSS property "border" or "border-color".

```
.border, #border, table{ border:4px solid rgb(222, 206, 202) }
```

If only the border color should be changed use the property border-color.

```
.border{ border-color:rgb(222, 206, 202) }
```

If you want to add a box shadow in that color use:

Here you see how a box with a 4 pixel rgb(222, 206, 202) colored shadow looks like.

```
.boxshadow{ -moz-box-shadow:4px 4px 4px  
4px rgb(222, 206, 202); -webkit-box-  
shadow:4px 4px 4px 4px rgb(222, 206, 202);  
box-shadow:4px 4px 4px 4px rgb(222, 206,  
202) }
```


Background

The CSS property to change the background color of an element to Yxy 63.9365, 0.3279, 0.3335 is called "background". The background property can be set on classes, ids or directly on the HTML element.

```
.background, #background, body{  
background: rgb(222, 206, 202) }
```

If only the background color should be changed can be used:

```
.background{ background-color: rgb(222,  
206, 202) }
```

This example shows the color as background, it is applied via the CSS property "background".

To optimize and compress your CSS code, you can use our [online CSS compressor and optimizer](#) based on csstidy. If you want to create a linear or radial gradient as background or border, check our [CSS Gradient Generator](#).

Hey! You found this booklet interesting? Support Converting Colors with the new Membership Option!

The pro membership hides all ads, plus gives you double the colors in the color bucket, and more awesome pro features!

[Learn more, Memberships starting at \\$2.50/m!](#)

**Follow me
on Twitter!**

@ConvertingColor