

Converting Colors

$Yxy(63.9069, 0.3276, 0.3250)$

Have a look what the booklet for
Yxy(63.9069, 0.3276, 0.3250)
contains.

Yxy(64.0707, 0.3276, 0.3246)	3
Conversions	4
Details	6
Harmonies	12
Previews	24
Color Blindness Simulation	27
CSS Examples	30

Color

Yxy(64.0707, 0.3276, 0.3246)

Conversions

Conversions Part 1

Format	Color
Hex	E3CCD0
RGB	227, 204, 208
RGB Percent	89%, 80%, 82%
CMY	0.1097, 0.2000, 0.1842
CMYK	0.00, 0.10, 0.08, 0.11
HSL	349°, 29%, 85%
HSV	349°, 10%, 89%
XYZ	64.6629, 64.0707, 68.6500
YIQ	211.3330, 12.4240, 6.1200

Conversions

Conversions Part 2

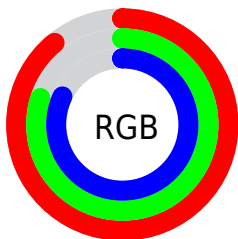
Format	Color
R _Y B	227, 204, 208
Decimal	14929104
CIE Lab	84.00, 8.71, 0.92
CIE LCh	84, 8.756, 6.038
Yxy	64.0707, 0.3276, 0.3246
Android (android.graphics.Color)	4293119184 (0xFFE3CCD0)
YUV	211.3330, -1.6432, 13.7400
Hunter-Lab	80.0442, 4.1221, 5.1808

Details

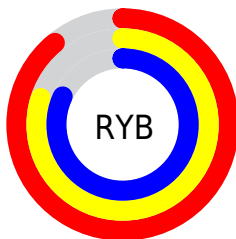
The Yxy color **64.0707, 0.3276, 0.3246** is a light color, and the websafe version is hex **CCCCCC**. A complement of this color would be **73.1114, 0.2996, 0.3335**, and the grayscale version is **65.3816, 0.3127, 0.3290**.

A 20% lighter version of the original color is **100.0000, 0.3127, 0.3290**, and **32.9164, 0.3315, 0.3233** is the 20% darker color. If you saturate the color by 10%, you get **53.1889, 0.3458, 0.3200**, and if you desaturate by 10%, it is **76.6398, 0.3129, 0.3289**.

Distribution



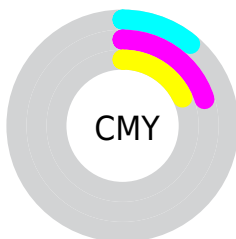
- Red (89%)
- Green (80%)
- Blue (82%)



- Red (89%)
- Yellow (80%)
- Blue (82%)



- Cyan (0%)
- Magenta (10%)
- Yellow (8%)
- Black (11%)



- Cyan (11%)
- Magenta (20%)
- Yellow (18%)

Brightness & Saturation Gradients

These gradients show how the Yxy color 64.0707, 0.3276, 0.3246 changes by changing the brightness by 10 percent. The first figure shows a shift by +10% for each color and the second figure -10%.

Similar to the brightness gradients but the following saturation gradients show a change of the Yxy color 64.0707, 0.3276, 0.3246 by changing the saturation by 10% instead.

64.0707, 0.3276,
0.3246

64.0707, 0.3276,
0.3246

439.4449, 0.3205,
0.3267

46.7079, 0.3293,
0.3241

110.7127, 0.3251,
0.3253

32.8048, 0.3313,
0.3235

140.7608, 0.3242,
0.3256

21.9770, 0.3340,
0.3227

175.8061, 0.3233,
0.3259

13.8400, 0.3376,
0.3216

216.2331, 0.3226,
0.3261

8.0095, 0.3426,
0.3200

262.4260, 0.3220,
0.3263

4.1010, 0.3501,
0.3177

314.7694, 0.3215,

1.7302, 0.3626,

0.3264

0.3137

373.6475, 0.3210,
0.3266

0.4431, 0.4239,
0.2964

0.0000, 0.0000,
0.0000

64.0707, 0.3276,
0.3246

64.0707, 0.3276,
0.3246

53.1889, 0.3458,
0.3200

76.6398, 0.3129,
0.3289

43.9145, 0.3684,
0.3152

90.9551, 0.3010,
0.3329

36.1736, 0.3960,
0.3105

95.0736, 0.2958,
0.3290

29.8832, 0.4291,
0.3064

■ 24.9525, 0.4675,
0.3035

■ 21.2805, 0.5096,
0.3026

■ 18.7519, 0.5518,
0.3046

■ 17.2299, 0.5889,
0.3098

■ 16.4851, 0.6163,
0.3169

Harmonies

Analogous

The Analogous color harmony consists of three colors that are next to each other on the color wheel.



64.0707, 0.3176, 0.3163



64.0707, 0.3276, 0.3246



64.0707, 0.3336, 0.3342

Triad

The Triadic color harmony groups three colors that are evenly spaced from another and form a triangle on the color wheel.



64.0707, 0.3276, 0.3246



64.0707, 0.3187, 0.3476



64.0707, 0.2920, 0.3150

Complementary

The Complementary color scheme is a pair of colors which are on the opposite of each other on the color wheel.



64.0707, 0.3276, 0.3246



73.1114, 0.2996, 0.3335

Split Complementary

Split-complementary colors differ from the complementary color scheme. The scheme consists of three colors, the original color and two neighbors of the complement color.



64.0707, 0.2923, 0.3232



64.0707, 0.3276, 0.3246



64.0707, 0.3076, 0.3423

Square

The Square scheme is like the rectangle color scheme, but the four colors are evenly spaced on the color wheel.



64.0707, 0.3276, 0.3246



64.0707, 0.3283, 0.3477



64.0707, 0.2980, 0.3333



64.0707, 0.2972, 0.3107

Rectangle

The Rectangle color scheme consists of four colors that form a rectangle on the color wheel.



64.0707, 0.3276, 0.3246



64.0707, 0.3344, 0.3401



64.0707, 0.2980, 0.3333



64.0707, 0.2915, 0.3174

Sweetspot

The Sweet Spot groups the original color and five complimentary colors.



64.0735, 0.3276, 0.3246



94.8160, 0.3168, 0.3277



64.3871, 0.3107, 0.3039



20.0054, 0.3180, 0.3274



0.0000, 0.0000, 0.0000



21.4041, 0.3127, 0.3290

Same Dimension

The Same Dimension uses a secret algorithm to generate beautiful new colors.



64.0735, 0.3276, 0.3246



80.4861, 0.3308, 0.3237



67.4244, 0.3297, 0.3371



14.4090, 0.3265, 0.3249



9.6245, 0.6133, 0.3152



0.7234, 0.5751, 0.2942

Inverse Universe

The Inverse Universe completely reimagines the original color for something new.



64.0735, 0.3276, 0.3246



80.4861, 0.3308, 0.3237



69.4274, 0.2971, 0.3208



14.4090, 0.3265, 0.3249



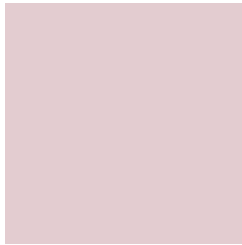
9.6245, 0.6133, 0.3152



0.7234, 0.5751, 0.2942

Previews

White Background



This preview shows how the Yxy color 64.0707, 0.3276, 0.3246 looks on a white background.

Color Contrast Check

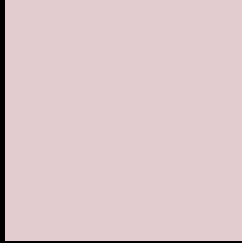
Large Text (above 18pt) WCAG AA × Fail

Any Text WCAG AA × Fail

Large Text (above 18pt) WCAG AAA × Fail

Any Text WCAG AAA × Fail

Black Background



This preview shows how the Yxy color 64.0707, 0.3276, 0.3246 looks on a black background.

Color Contrast Check

Large Text (above 18pt) WCAG AA ✓ Pass

Any Text WCAG AA ✓ Pass

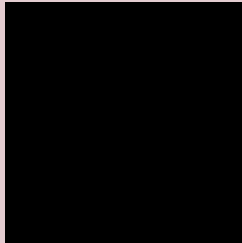
Large Text (above 18pt) WCAG AAA ✓ Pass

Any Text WCAG AAA ✓ Pass

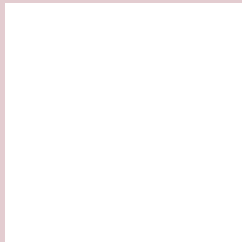
If you want to check with other color combinations, try the [Color Contrast Checker](#).

Yxy 64.0707, 0.3276, 0.3246

Background



This preview shows how black text looks on a background with the Yxy color 64.0707, 0.3276, 0.3246.

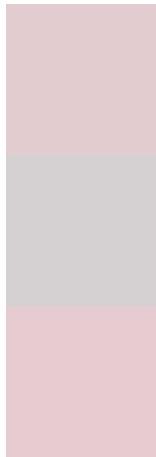


This preview shows how white text looks on a background with the Yxy color 64.0707, 0.3276, 0.3246.

Color Blindness Simulation

Color vision deficiency is a very complex topic, and I could not describe the different causes any better than Wikipedia does, so if you want to learn more, you should check out their [article about color blindness](#).

Dichromacy



Original Color

64.0707, 0.3276, 0.3246

Protanopia

64.4502, 0.3143, 0.3267

Deuteranopia

64.0889, 0.3301, 0.3236



Tritanopia

63.7970, 0.3212, 0.3116

Trichromacy



Original Color

64.0707, 0.3276, 0.3246

Protanomaly

64.1842, 0.3189, 0.3257

Deuteranomaly

63.9240, 0.3293, 0.3236

Tritanomaly

64.0609, 0.3241, 0.3170

Monochromacy



Original Color

64.0707, 0.3276, 0.3246

Achromatopsia

65.1406, 0.3127, 0.3290

Achromatomaly

64.5166, 0.3181, 0.3268

CSS Examples

Text

The CSS property to change the color of the text to Yxy 64.0707, 0.3276, 0.3246 is called "color". The color property can be set on classes, ids or directly on the HTML element.

This example shows how text in the color `rgb(227, 204, 208)` looks like.

```
.text, #text, p{  
    color:rgb(227, 204, 208)  
}
```

If you want to add a text shadow in that color use the text-shadow property, you can generate a text shadow directly with our [CSS Text Shadow Generator](#).

Here you see how black text with a 4 pixel rgb(227, 204, 208) colored shadow looks like.

```
.shadow{ text-shadow: 4px 4px 2px rgb(227, 204, 208) }
```

Border

The CSS property to change the border of an element to Yxy 64.0707, 0.3276, 0.3246 is called "border". The border property can be set on classes, ids or directly on the HTML element.

This example shows the color as border, it can be applied via the CSS property "border" or "border-color".

```
.border, #border, table{ border:4px solid rgb(227, 204, 208) }
```

If only the border color should be changed use the property `border-color`.

```
.border{ border-color:rgb(227, 204, 208) }
```

If you want to add a box shadow in that color use:

Here you see how a box with a 4 pixel `rgb(227, 204, 208)` colored shadow looks like.

```
.boxshadow{ -moz-box-shadow:4px 4px 4px  
4px rgb(227, 204, 208); -webkit-box-  
shadow:4px 4px 4px 4px rgb(227, 204, 208);  
box-shadow:4px 4px 4px 4px rgb(227, 204,  
208) }
```


Background

The CSS property to change the background color of an element to Yxy 64.0707, 0.3276, 0.3246 is called "background". The background property can be set on classes, ids or directly on the HTML element.

```
.background, #background, body{  
background: rgb(227, 204, 208) }
```

If only the background color should be changed can be used:

```
.background{ background-color: rgb(227,  
204, 208) }
```

This example shows the color as background, it is applied via the CSS property "background".

To optimize and compress your CSS code, you can use our [online CSS compressor and optimizer](#) based on csstidy. If you want to create a linear or radial gradient as background or border, check our [CSS Gradient Generator](#).

Hey! You found this booklet interesting? Support Converting Colors with the new Membership Option!

The pro membership hides all ads, plus gives you double the colors in the color bucket, and more awesome pro features!

[Learn more, Memberships starting at \\$2.50/m!](#)

**Follow me
on Twitter!**

@ConvertingColor