

Converting Colors

$Yxy(63.9210, 0.3366, 0.3357)$

Have a look what the booklet for
Yxy(63.9210, 0.3366, 0.3357)
contains.

Yxy(63.9210, 0.3366, 0.3357)	3
Conversions	4
Details	6
Harmonies	12
Previews	24
Color Blindness Simulation	27
CSS Examples	30

Color

Yxy(63.9210, 0.3366, 0.3357)

Conversions

Conversions Part 1

Format	Color
Hex	E5CCC6
RGB	229, 204, 198
RGB Percent	90%, 80%, 78%
CMY	0.1021, 0.1999, 0.2234
CMYK	0.00, 0.11, 0.14, 0.10
HSL	12°, 37%, 84%
HSV	12°, 14%, 90%
XYZ	64.0924, 63.9210, 62.3977
YIQ	210.7910, 16.8260, 3.4340

Conversions

Conversions Part 2

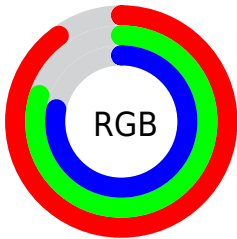
Format	Color
R _Y B	229, 205, 198
Decimal	15060166
CIE Lab	83.92, 7.75, 6.16
CIE LCh	84, 9.897, 38.490
Yxy	63.9210, 0.3366, 0.3357
Android (android.graphics.Color)	4293250246 (0xFFE5CCC6)
YUV	210.7910, -6.3060, 15.9693
Hunter-Lab	79.9506, 3.1809, 9.6924

Details

The Yxy color $63.9210, 0.3366, 0.3357$ is a light color, and the websafe version is hex `CCCCCC`. A complement of this color would be $70.4231, 0.2920, 0.3222$, and the grayscale version is $65.0304, 0.3127, 0.3290$.

A 20% lighter version of the original color is $100.0000, 0.3127, 0.3290$, and $32.7105, 0.3426, 0.3378$ is the 20% darker color. If you saturate the color by 10%, you get $54.6832, 0.3587, 0.3410$, and if you desaturate by 10%, it is $74.3644, 0.3183, 0.3307$.

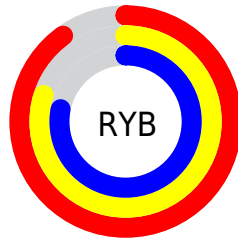
Distribution



Red (90%)

Green (80%)

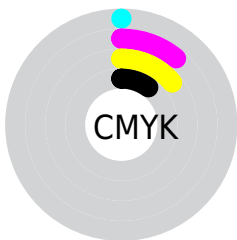
Blue (78%)



Red (90%)

Yellow (80%)

Blue (78%)

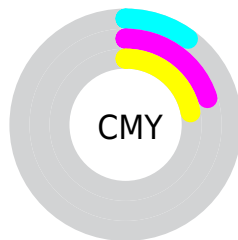


Cyan (0%)

Magenta (11%)

Yellow (14%)

Black (10%)



Cyan (10%)

Magenta (20%)

Yellow (22%)

Brightness & Saturation Gradients

These gradients show how the Yxy color 63.9210, 0.3366, 0.3357 changes by changing the brightness by 10 percent. The first figure shows a shift by +10% for each color and the second figure -10%.

Similar to the brightness gradients but the following saturation gradients show a change of the Yxy color 63.9210, 0.3366, 0.3357 by changing the saturation by 10% instead.

63.9210, 0.3366,
0.3357

63.9210, 0.3366,
0.3357

438.9043, 0.3252,
0.3326

46.5867, 0.3393,
0.3364

110.4972, 0.3326,
0.3346

32.7090, 0.3426,
0.3372

140.5078, 0.3310,
0.3342

21.9036, 0.3470,
0.3383

175.5127, 0.3297,
0.3339

13.7861, 0.3528,
0.3397

215.8962, 0.3286,
0.3336

7.9721, 0.3609,
0.3415

262.0427, 0.3276,
0.3333

4.0771, 0.3732,
0.3440

314.3366, 0.3267,

1.7168, 0.3937,

0.3331

373.1624, 0.3259,
0.3328

0.3477

0.4345, 0.5580,
0.4027

0.0000, 0.0000,
0.0000

63.9210, 0.3366,
0.3357

63.9210, 0.3366,
0.3357

54.6832, 0.3587,
0.3410

74.3644, 0.3183,
0.3307

46.5991, 0.3853,
0.3465

86.0460, 0.3033,
0.3260

39.6256, 0.4170,
0.3517

95.3923, 0.2970,
0.3290

33.7136, 0.4536,
0.3562

■ 28.8104, 0.4942,
0.3591

■ 24.8586, 0.5362,
0.3595

■ 21.7947, 0.5752,
0.3566

■ 19.5470, 0.6060,
0.3503

■ 18.4806, 0.6207,
0.3453

Harmonies

Analogous

The Analogous color harmony consists of three colors that are next to each other on the color wheel.



63.9210, 0.3303, 0.3249



63.9210, 0.3366, 0.3357



63.9210, 0.3363, 0.3451

Triad

The Triadic color harmony groups three colors that are evenly spaced from another and form a triangle on the color wheel.



63.9210, 0.3366, 0.3357



63.9210, 0.3059, 0.3434



63.9210, 0.2959, 0.3081

Complementary

The Complementary color scheme is a pair of colors which are on the opposite of each other on the color wheel.



63.9210, 0.3366, 0.3357



70.4231, 0.2920, 0.3222

Split Complementary

Split-complementary colors differ from the complementary color scheme. The scheme consists of three colors, the original color and two neighbors of the complement color.



63.9210, 0.2896, 0.3125



63.9210, 0.3366, 0.3357



63.9210, 0.2953, 0.3329

Square

The Square scheme is like the rectangle color scheme, but the four colors are evenly spaced on the color wheel.



63.9210, 0.3366, 0.3357



63.9210, 0.3184, 0.3498



63.9210, 0.2894, 0.3215



63.9210, 0.3067, 0.3092

Rectangle

The Rectangle color scheme consists of four colors that form a rectangle on the color wheel.



63.9210, 0.3366, 0.3357



63.9210, 0.3325, 0.3492



63.9210, 0.2894, 0.3215



63.9210, 0.2932, 0.3090

Sweetspot

The Sweet Spot groups the original color and five complimentary colors.



63.9238, 0.3366, 0.3357



94.2251, 0.3192, 0.3309



62.3934, 0.3184, 0.3016



19.9417, 0.3205, 0.3313



0.0000, 0.0000, 0.0000



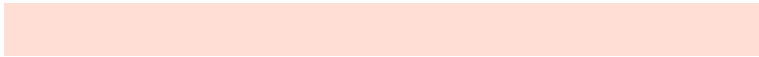
21.4041, 0.3127, 0.3290

Same Dimension

The Same Dimension uses a secret algorithm to generate beautiful new colors.



63.9238, 0.3366, 0.3357



78.4235, 0.3419, 0.3371



71.4802, 0.3343, 0.3521



14.8177, 0.3288, 0.3336



10.7019, 0.6184, 0.3472



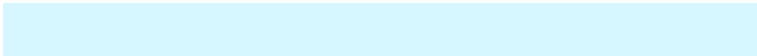
0.9183, 0.5913, 0.3687

Inverse Universe

The Inverse Universe completely reimagines the original color for something new.



70.4231, 0.2920, 0.3222



88.1261, 0.2881, 0.3208



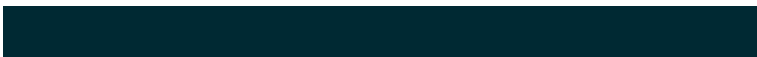
62.6878, 0.2914, 0.3048



15.8368, 0.2981, 0.3243



23.1558, 0.2072, 0.2658



1.8331, 0.2100, 0.2761

Previews

White Background



This preview shows how the Yxy color 63.9210, 0.3366, 0.3357 looks on a white background.

Color Contrast Check

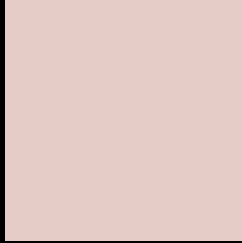
Large Text (above 18pt) WCAG AA × Fail

Any Text WCAG AA × Fail

Large Text (above 18pt) WCAG AAA × Fail

Any Text WCAG AAA × Fail

Black Background



This preview shows how the Yxy color 63.9210, 0.3366, 0.3357 looks on a black background.

Color Contrast Check

Large Text (above 18pt) WCAG AA ✓ Pass

Any Text WCAG AA ✓ Pass

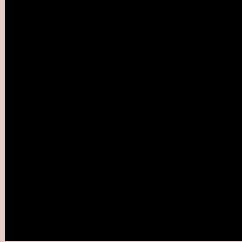
Large Text (above 18pt) WCAG AAA ✓ Pass

Any Text WCAG AAA ✓ Pass

If you want to check with other color combinations, try the [Color Contrast Checker](#).

Yxy 63.9210, 0.3366, 0.3357

Background



This preview shows how black text looks on a background with the Yxy color 63.9210, 0.3366, 0.3357.



This preview shows how white text looks on a background with the Yxy color 63.9210, 0.3366, 0.3357.

Color Blindness Simulation

Color vision deficiency is a very complex topic, and I could not describe the different causes any better than Wikipedia does, so if you want to learn more, you should check out their [article about color blindness](#).

Dichromacy



Original Color

63.9210, 0.3366, 0.3357

Protanopia

64.2181, 0.3236, 0.3393

Deuteranopia

63.8107, 0.3410, 0.3335



Tritanopia

63.7720, 0.3244, 0.3117

Trichromacy



Original Color

63.9210, 0.3366, 0.3357

Protanomaly

63.9648, 0.3284, 0.3381

Deuteranomaly

63.9449, 0.3392, 0.3346

Tritanomaly

63.7172, 0.3287, 0.3203

Monochromacy



Original Color

63.9210, 0.3366, 0.3357

Achromatopsia

65.1406, 0.3127, 0.3290

Achromatomaly

64.4734, 0.3217, 0.3313

CSS Examples

Text

The CSS property to change the color of the text to Yxy 63.9210, 0.3366, 0.3357 is called "color". The color property can be set on classes, ids or directly on the HTML element.

This example shows how text in the color `rgb(229, 204, 198)` looks like.

```
.text, #text, p{  
    color:rgb(229, 204, 198)  
}
```

If you want to add a text shadow in that color use the text-shadow property, you can generate a text shadow directly with our [CSS Text Shadow Generator](#).

Here you see how black text with a 4 pixel rgb(229, 204, 198) colored shadow looks like.

```
.shadow{ text-shadow: 4px 4px 2px rgb(229, 204, 198) }
```

Border

The CSS property to change the border of an element to Yxy 63.9210, 0.3366, 0.3357 is called "border". The border property can be set on classes, ids or directly on the HTML element.

This example shows the color as border, it can be applied via the CSS property "border" or "border-color".

```
.border, #border, table{ border:4px solid rgb(229, 204, 198) }
```

If only the border color should be changed use the property `border-color`.

```
.border{ border-color:rgb(229, 204, 198) }
```

If you want to add a box shadow in that color use:

Here you see how a box with a 4 pixel `rgb(229, 204, 198)` colored shadow looks like.

```
.boxshadow{ -moz-box-shadow:4px 4px 4px  
4px rgb(229, 204, 198); -webkit-box-  
shadow:4px 4px 4px 4px rgb(229, 204, 198);  
box-shadow:4px 4px 4px 4px rgb(229, 204,  
198) }
```


Background

The CSS property to change the background color of an element to Yxy 63.9210, 0.3366, 0.3357 is called "background". The background property can be set on classes, ids or directly on the HTML element.

```
.background, #background, body{  
background: rgb(229, 204, 198) }
```

If only the background color should be changed can be used:

```
.background{ background-color: rgb(229,  
204, 198) }
```

This example shows the color as background, it is applied via the CSS property "background".

To optimize and compress your CSS code, you can use our [online CSS compressor and optimizer](#) based on csstidy. If you want to create a linear or radial gradient as background or border, check our [CSS Gradient Generator](#).

Hey! You found this booklet interesting? Support Converting Colors with the new Membership Option!

The pro membership hides all ads, plus gives you double the colors in the color bucket, and more awesome pro features!

[Learn more, Memberships starting at \\$2.50/m!](#)

**Follow me
on Twitter!**

@ConvertingColor