

Converting Colors

$Y_{xy}(64.2592, 0.3351, 0.3379)$

Have a look what the booklet for
Yxy(64.2592, 0.3351, 0.3379)
contains.

Yxy(64.0708, 0.3349, 0.3368)	3
<i>Conversions</i>	4
<i>Details</i>	6
<i>Harmonies</i>	12
<i>Previews</i>	24
<i>Color Blindness Simulation</i>	27
<i>CSS Examples</i>	30

Color

Yxy(64.0708, 0.3349, 0.3368)

Conversions

Conversions Part 1

Format	Color
Hex	E3CDC6
RGB	227, 205, 198
RGB Percent	89%, 80%, 78%
CMY	0.1097, 0.1961, 0.2234
CMYK	0.00, 0.10, 0.13, 0.11
HSL	14°, 34%, 83%
HSV	14°, 13%, 89%
XYZ	63.7094, 64.0708, 62.4538
YIQ	210.7800, 15.3590, 2.4870

Conversions

Conversions Part 2

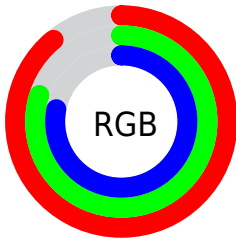
Format	Color
R_{YB}	227, 207, 198
Decimal	14929350
CIE Lab	84.00, 6.54, 6.24
CIE LCh	84, 9.039, 43.697
Yxy	64.0708, 0.3349, 0.3368
Android (android.graphics.Color)	4293119430 (0xFFE3CDC6)
YUV	210.7800, -6.3005, 14.2249
Hunter-Lab	80.0442, 1.9955, 9.7705

Details

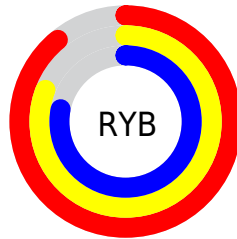
The Yxy color **64.0708, 0.3349, 0.3368** is a light color, and the websafe version is hex **CCCCCC**. A complement of this color would be **68.7703, 0.2931, 0.3211**, and the grayscale version is **65.0273, 0.3127, 0.3290**.

A 20% lighter version of the original color is **100.0000, 0.3127, 0.3290**, and **32.8048, 0.3402, 0.3393** is the 20% darker color. If you saturate the color by 10%, you get **55.3019, 0.3563, 0.3434**, and if you desaturate by 10%, it is **73.9119, 0.3171, 0.3306**.

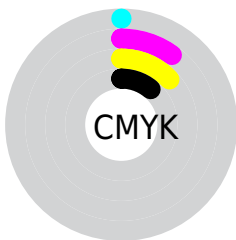
Distribution



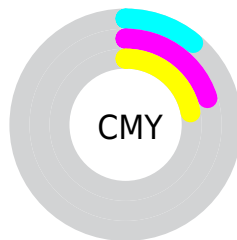
- Red (89%)
- Green (80%)
- Blue (78%)



- Red (89%)
- Yellow (81%)
- Blue (78%)



- Cyan (0%)
- Magenta (10%)
- Yellow (13%)
- Black (11%)



- Cyan (11%)
- Magenta (20%)
- Yellow (22%)

Brightness & Saturation Gradients

These gradients show how the Yxy color 64.0708, 0.3349, 0.3368 changes by changing the brightness by 10 percent. The first figure shows a shift by +10% for each color and the second figure -10%.

Similar to the brightness gradients but the following saturation gradients show a change of the Yxy color 64.0708, 0.3349, 0.3368 by changing the saturation by 10% instead.

64.0708, 0.3349,
0.3368

64.0708, 0.3349,
0.3368

439.4453, 0.3243,
0.3332

46.7080, 0.3374,
0.3376

110.7129, 0.3312,
0.3356

32.8049, 0.3405,
0.3386

140.7610, 0.3297,
0.3351

21.9770, 0.3445,
0.3399

175.8063, 0.3285,
0.3347

13.8400, 0.3499,
0.3416

216.2333, 0.3275,
0.3343

8.0095, 0.3574,
0.3438

262.4263, 0.3265,
0.3340

4.1010, 0.3688,
0.3470

314.7697, 0.3257,

1.7302, 0.3877,

0.3337

0.3518

373.6479, 0.3250,
0.3334

0.4431, 0.5428,
0.4142

0.0000, 0.0000,
0.0000

64.0708, 0.3349,
0.3368

64.0708, 0.3349,
0.3368

55.3019, 0.3563,
0.3434

73.9119, 0.3171,
0.3306

47.5604, 0.3818,
0.3501

84.8511, 0.3023,
0.3249

40.8106, 0.4119,
0.3566

95.0735, 0.2958,
0.3290

35.0117, 0.4466,
0.3624

■ 30.1200, 0.4851,
0.3664

■ 26.0881, 0.5251,
0.3677

■ 22.8641, 0.5631,
0.3653

■ 20.3898, 0.5945,
0.3587

■ 19.0237, 0.6118,
0.3524

Harmonies

Analogous

The Analogous color harmony consists of three colors that are next to each other on the color wheel.



64.0708, 0.3301, 0.3270



64.0708, 0.3349, 0.3368



64.0708, 0.3336, 0.3448

Triad

The Triadic color harmony groups three colors that are evenly spaced from another and form a triangle on the color wheel.



64.0708, 0.3349, 0.3368



64.0708, 0.3046, 0.3406



64.0708, 0.2988, 0.3097

Complementary

The Complementary color scheme is a pair of colors which are on the opposite of each other on the color wheel.



64.0708, 0.3349, 0.3368



68.7703, 0.2931, 0.3211

Split Complementary

Split-complementary colors differ from the complementary color scheme. The scheme consists of three colors, the original color and two neighbors of the complement color.



64.0708, 0.2922, 0.3130



64.0708, 0.3349, 0.3368



64.0708, 0.2955, 0.3307

Square

The Square scheme is like the rectangle color scheme, but the four colors are evenly spaced on the color wheel.



64.0708, 0.3349, 0.3368



64.0708, 0.3160, 0.3473



64.0708, 0.2911, 0.3206



64.0708, 0.3092, 0.3115

Rectangle

The Rectangle color scheme consists of four colors that form a rectangle on the color wheel.



64.0708, 0.3349, 0.3368



64.0708, 0.3294, 0.3480



64.0708, 0.2911, 0.3206



64.0708, 0.2961, 0.3103

Sweetspot

The Sweet Spot groups the original color and five complimentary colors.



64.0736, 0.3349, 0.3368



94.5156, 0.3192, 0.3314



61.9172, 0.3191, 0.3047



20.0150, 0.3204, 0.3318



0.0000, 0.0000, 0.0000



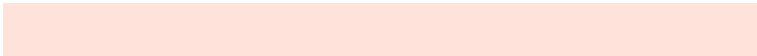
21.4041, 0.3127, 0.3290

Same Dimension

The Same Dimension uses a secret algorithm to generate beautiful new colors.



64.0736, 0.3349, 0.3368



80.6178, 0.3395, 0.3383



71.2252, 0.3328, 0.3523



14.9275, 0.3286, 0.3347



11.2444, 0.6093, 0.3544



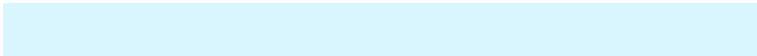
0.9730, 0.5810, 0.3769

Inverse Universe

The Inverse Universe completely reimagines the original color for something new.



68.7703, 0.2931, 0.3211



87.7283, 0.2895, 0.3195



61.5849, 0.2926, 0.3045



15.7186, 0.2981, 0.3232



20.7317, 0.2027, 0.2496



1.6733, 0.2063, 0.2625

Previews

White Background



This preview shows how the Yxy color 64.0708, 0.3349, 0.3368 looks on a white background.

Color Contrast Check

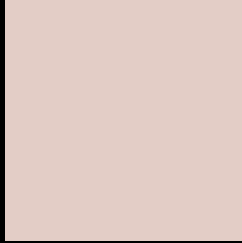
Large Text (above 18pt) WCAG AA × Fail

Any Text WCAG AA × Fail

Large Text (above 18pt) WCAG AAA × Fail

Any Text WCAG AAA × Fail

Black Background



This preview shows how the Yxy color 64.0708, 0.3349, 0.3368 looks on a black background.

Color Contrast Check

Large Text (above 18pt) WCAG AA ✓ Pass

Any Text WCAG AA ✓ Pass

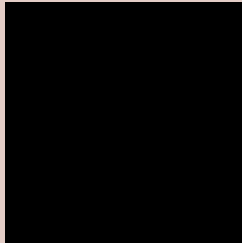
Large Text (above 18pt) WCAG AAA ✓ Pass

Any Text WCAG AAA ✓ Pass

If you want to check with other color combinations, try the [Color Contrast Checker](#).

Yxy 64.0708, 0.3349, 0.3368

Background



This preview shows how black text looks on a background with the Yxy color 64.0708, 0.3349, 0.3368.

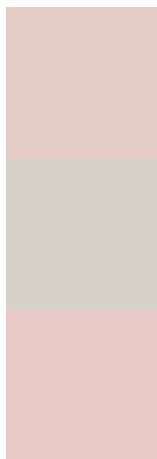


This preview shows how white text looks on a background with the Yxy color 64.0708, 0.3349, 0.3368.

Color Blindness Simulation

Color vision deficiency is a very complex topic, and I could not describe the different causes any better than Wikipedia does, so if you want to learn more, you should check out their [article about color blindness](#).

Dichromacy



Original Color

64.0708, 0.3349, 0.3368

Protanopia

64.3700, 0.3244, 0.3393

Deuteranopia

63.8570, 0.3402, 0.3324



Tritanopia

64.1260, 0.3228, 0.3117

Trichromacy



Original Color

64.0708, 0.3349, 0.3368

Protanomaly

64.4509, 0.3283, 0.3392

Deuteranomaly

63.8243, 0.3376, 0.3335

Tritanomaly

64.0730, 0.3271, 0.3203

Monochromacy



Original Color

64.0708, 0.3349, 0.3368

Achromatopsia

65.1406, 0.3127, 0.3290

Achromatomaly

64.8089, 0.3209, 0.3324

CSS Examples

Text

The CSS property to change the color of the text to Yxy 64.0708, 0.3349, 0.3368 is called "color". The color property can be set on classes, ids or directly on the HTML element.

This example shows how text in the color `rgb(227, 205, 198)` looks like.

```
.text, #text, p{  
    color:rgb(227, 205, 198)  
}
```

If you want to add a text shadow in that color use the text-shadow property, you can generate a text shadow directly with our [CSS Text Shadow Generator](#).

Here you see how black text with a 4 pixel rgb(227, 205, 198) colored shadow looks like.

```
.shadow{ text-shadow: 4px 4px 2px rgb(227, 205, 198) }
```

Border

The CSS property to change the border of an element to Yxy 64.0708, 0.3349, 0.3368 is called "border". The border property can be set on classes, ids or directly on the HTML element.

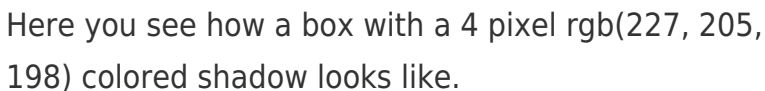
This example shows the color as border, it can be applied via the CSS property "border" or "border-color".

```
.border, #border, table{ border:4px solid rgb(227, 205, 198) }
```

If only the border color should be changed use the property `border-color`.

```
.border{ border-color:rgb(227, 205, 198) }
```

If you want to add a box shadow in that color use:



Here you see how a box with a 4 pixel `rgb(227, 205, 198)` colored shadow looks like.

```
.boxshadow{ -moz-box-shadow:4px 4px 4px 4px rgb(227, 205, 198); -webkit-box-shadow:4px 4px 4px 4px rgb(227, 205, 198); box-shadow:4px 4px 4px 4px rgb(227, 205, 198) }
```


Background

The CSS property to change the background color of an element to Yxy 64.0708, 0.3349, 0.3368 is called "background". The background property can be set on classes, ids or directly on the HTML element.

```
.background, #background, body{  
background: rgb(227, 205, 198) }
```

If only the background color should be changed can be used:

```
.background{ background-color: rgb(227,  
205, 198) }
```

This example shows the color as background, it is applied via the CSS property "background".

To optimize and compress your CSS code, you can use our [online CSS compressor and optimizer](#) based on csstidy. If you want to create a linear or radial gradient as background or border, check our [CSS Gradient Generator](#).

Hey! You found this booklet interesting? Support Converting Colors with the new Membership Option!

The pro membership hides all ads, plus gives you double the colors in the color bucket, and more awesome pro features!

[Learn more, Memberships starting at \\$2.50/m!](#)

**Follow me
on Twitter!**

@ConvertingColor