

Converting Colors

$Y_{xy}(64.2736, 0.3252, 0.3246)$

Have a look what the booklet for
Yxy(64.2736, 0.3252, 0.3246)
contains.

Yxy(64.2736, 0.3252, 0.3246)	3
Conversions	4
Details	6
Harmonies	12
Previews	24
Color Blindness Simulation	27
CSS Examples	30

Color

Yxy(64.2736, 0.3252, 0.3246)

Conversions

Conversions Part 1

Format	Color
Hex	E1CDD1
RGB	225, 205, 209
RGB Percent	88%, 80%, 82%
CMY	0.1176, 0.1961, 0.1803
CMYK	0.00, 0.09, 0.07, 0.12
HSL	348°, 25%, 84%
HSV	348°, 9%, 88%
XYZ	64.3924, 64.2736, 69.3426
YIQ	211.4360, 10.6360, 5.4840

Conversions

Conversions Part 2

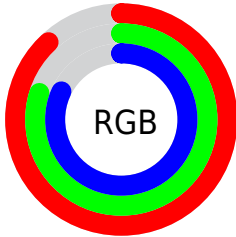
Format	Color
R _Y B	225, 205, 209
Decimal	14798289
CIE Lab	84.11, 7.64, 0.53
CIE LCh	84, 7.657, 3.955
Yxy	64.2736, 0.3252, 0.3246
Android (android.graphics.Color)	4292988369 (0xFFE1CDD1)
YUV	211.4360, -1.2009, 11.8956
Hunter-Lab	80.1708, 3.0705, 4.8375

Details

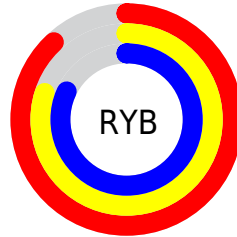
The Yxy color $64.2736, 0.3252, 0.3246$ is a light color, and the websafe version is hex `CCCCCC`. A complement of this color would be $72.0502, 0.3015, 0.3334$, and the grayscale version is $65.4496, 0.3127, 0.3290$.

A 20% lighter version of the original color is $100.0000, 0.3127, 0.3290$, and $33.0458, 0.3283, 0.3233$ is the 20% darker color. If you saturate the color by 10%, you get $53.4332, 0.3424, 0.3193$, and if you desaturate by 10%, it is $76.7681, 0.3113, 0.3295$.

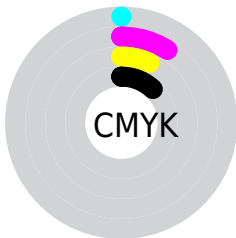
Distribution



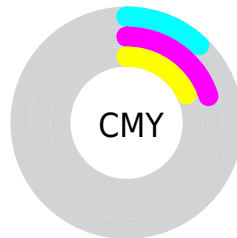
- Red (88%)
- Green (80%)
- Blue (82%)



- Red (88%)
- Yellow (80%)
- Blue (82%)



- Cyan (0%)
- Magenta (9%)
- Yellow (7%)
- Black (12%)



- Cyan (12%)
- Magenta (20%)
- Yellow (18%)

Brightness & Saturation Gradients

These gradients show how the Yxy color 64.2736, 0.3252, 0.3246 changes by changing the brightness by 10 percent. The first figure shows a shift by +10% for each color and the second figure -10%.

Similar to the brightness gradients but the following saturation gradients show a change of the Yxy color 64.2736, 0.3252, 0.3246 by changing the saturation by 10% instead.

■ 64.2736, 0.3252,
0.3246

■ 64.2736, 0.3252,
0.3246

440.1770, 0.3193,
0.3267

■ 46.8723, 0.3266,
0.3241

111.0049, 0.3231,
0.3253

■ 32.9347, 0.3283,
0.3235

141.1036, 0.3223,
0.3256

■ 22.0764, 0.3306,
0.3227

176.2037, 0.3216,
0.3259

■ 13.9131, 0.3335,
0.3216

216.6894, 0.3210,
0.3261

■ 8.0602, 0.3377,
0.3201

262.9452, 0.3205,
0.3263

■ 4.1335, 0.3439,
0.3178

315.3555, 0.3201,

■ 1.7485, 0.3544,

0.3264

0.3140

374.3046, 0.3197,
0.3266

0.4548, 0.4039,
0.2969

0.0000, 0.0000,
0.0000

64.2736, 0.3252,
0.3246

64.2736, 0.3252,
0.3246

53.4332, 0.3424,
0.3193

76.7681, 0.3113,
0.3295

44.1694, 0.3636,
0.3139

90.9733, 0.3001,
0.3341

36.4109, 0.3896,
0.3085

94.7476, 0.2946,
0.3289

30.0781, 0.4209,
0.3036

■ 25.0833, 0.4574,
0.2999

■ 21.3298, 0.4978,
0.2983

■ 18.7073, 0.5393,
0.2998

■ 17.0861, 0.5772,
0.3048

■ 16.2683, 0.6071,
0.3126

Harmonies

Analogous

The Analogous color harmony consists of three colors that are next to each other on the color wheel.



64.2736, 0.3164, 0.3174



64.2736, 0.3252, 0.3246



64.2736, 0.3307, 0.3330

Triad

The Triadic color harmony groups three colors that are evenly spaced from another and form a triangle on the color wheel.



64.2736, 0.3252, 0.3246



64.2736, 0.3186, 0.3454



64.2736, 0.2945, 0.3172

Complementary

The Complementary color scheme is a pair of colors which are on the opposite of each other on the color wheel.



64.2736, 0.3252, 0.3246



72.0502, 0.3015, 0.3334

Split Complementary

Split-complementary colors differ from the complementary color scheme. The scheme consists of three colors, the original color and two neighbors of the complement color.



64.2736, 0.2951, 0.3246



64.2736, 0.3252, 0.3246



64.2736, 0.3089, 0.3410

Square

The Square scheme is like the rectangle color scheme, but the four colors are evenly spaced on the color wheel.



64.2736, 0.3252, 0.3246



64.2736, 0.3268, 0.3451



64.2736, 0.3003, 0.3334



64.2736, 0.2987, 0.3131

Rectangle

The Rectangle color scheme consists of four colors that form a rectangle on the color wheel.



64.2736, 0.3252, 0.3246



64.2736, 0.3317, 0.3383



64.2736, 0.3003, 0.3334



64.2736, 0.2941, 0.3194

Sweetspot

The Sweet Spot groups the original color and five complimentary colors.



64.2764, 0.3252, 0.3246



94.8281, 0.3167, 0.3275



64.4209, 0.3105, 0.3071



20.0087, 0.3178, 0.3271



0.0000, 0.0000, 0.0000



21.4041, 0.3127, 0.3290

Same Dimension

The Same Dimension uses a secret algorithm to generate beautiful new colors.



64.2764, 0.3252, 0.3246



82.0298, 0.3287, 0.3235



66.8402, 0.3275, 0.3353



13.7453, 0.3261, 0.3243



9.3474, 0.6066, 0.3115



0.6607, 0.5642, 0.2882

Inverse Universe

The Inverse Universe completely reimagines the original color for something new.



64.2764, 0.3252, 0.3246



82.0298, 0.3287, 0.3235



69.2538, 0.2990, 0.3226



13.7453, 0.3261, 0.3243



9.3474, 0.6066, 0.3115



0.6607, 0.5642, 0.2882

Previews

White Background



This preview shows how the Yxy color 64.2736, 0.3252, 0.3246 looks on a white background.

Color Contrast Check

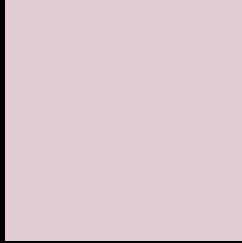
Large Text (above 18pt) WCAG AA × Fail

Any Text WCAG AA × Fail

Large Text (above 18pt) WCAG AAA × Fail

Any Text WCAG AAA × Fail

Black Background



This preview shows how the Yxy color 64.2736, 0.3252, 0.3246 looks on a black background.

Color Contrast Check

Large Text (above 18pt) WCAG AA ✓ Pass

Any Text WCAG AA ✓ Pass

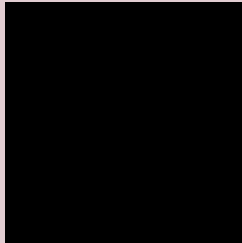
Large Text (above 18pt) WCAG AAA ✓ Pass

Any Text WCAG AAA ✓ Pass

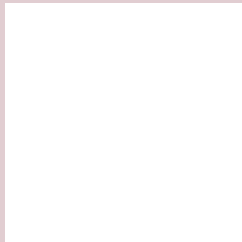
If you want to check with other color combinations, try the [Color Contrast Checker](#).

Yxy 64.2736, 0.3252, 0.3246

Background



This preview shows how black text looks on a background with the Yxy color 64.2736, 0.3252, 0.3246.



This preview shows how white text looks on a background with the Yxy color 64.2736, 0.3252, 0.3246.

Color Blindness Simulation

Color vision deficiency is a very complex topic, and I could not describe the different causes any better than Wikipedia does, so if you want to learn more, you should check out their [article about color blindness](#).

Dichromacy



Original Color

64.2736, 0.3252, 0.3246

Protanopia

64.4502, 0.3143, 0.3267

Deuteranopia

64.1383, 0.3293, 0.3225



Tritanopia

63.9951, 0.3189, 0.3115

Trichromacy



Original Color

64.2736, 0.3252, 0.3246

Protanomaly

64.5166, 0.3181, 0.3268

Deuteranomaly

64.2832, 0.3276, 0.3236

Tritanomaly

64.2608, 0.3217, 0.3170

Monochromacy



Original Color

64.2736, 0.3252, 0.3246

Achromatopsia

65.1406, 0.3127, 0.3290

Achromatomaly

64.8530, 0.3173, 0.3279

CSS Examples

Text

The CSS property to change the color of the text to Yxy 64.2736, 0.3252, 0.3246 is called "color". The color property can be set on classes, ids or directly on the HTML element.

This example shows how text in the color `rgb(225, 205, 209)` looks like.

```
.text, #text, p{  
    color:rgb(225, 205, 209)  
}
```

If you want to add a text shadow in that color use the text-shadow property, you can generate a text shadow directly with our [CSS Text Shadow Generator](#).

Here you see how black text with a 4 pixel rgb(225, 205, 209) colored shadow looks like.

```
.shadow{ text-shadow: 4px 4px 2px rgb(225, 205, 209) }
```

Border

The CSS property to change the border of an element to Yxy 64.2736, 0.3252, 0.3246 is called "border". The border property can be set on classes, ids or directly on the HTML element.

This example shows the color as border, it can be applied via the CSS property "border" or "border-color".

```
.border, #border, table{ border:4px solid rgb(225, 205, 209) }
```

If only the border color should be changed use the property `border-color`.

```
.border{ border-color:rgb(225, 205, 209) }
```

If you want to add a box shadow in that color use:

Here you see how a box with a 4 pixel `rgb(225, 205, 209)` colored shadow looks like.

```
.boxshadow{ -moz-box-shadow:4px 4px 4px 4px rgb(225, 205, 209); -webkit-box-shadow:4px 4px 4px 4px rgb(225, 205, 209); box-shadow:4px 4px 4px 4px rgb(225, 205, 209) }
```


Background

The CSS property to change the background color of an element to Yxy 64.2736, 0.3252, 0.3246 is called "background". The background property can be set on classes, ids or directly on the HTML element.

```
.background, #background, body{  
background: rgb(225, 205, 209) }
```

If only the background color should be changed can be used:

```
.background{ background-color: rgb(225,  
205, 209) }
```

This example shows the color as background, it is applied via the CSS property "background".

To optimize and compress your CSS code, you can use our [online CSS compressor and optimizer](#) based on csstidy. If you want to create a linear or radial gradient as background or border, check our [CSS Gradient Generator](#).

Hey! You found this booklet interesting? Support Converting Colors with the new Membership Option!

The pro membership hides all ads, plus gives you double the colors in the color bucket, and more awesome pro features!

[Learn more, Memberships starting at \\$2.50/m!](#)

**Follow me
on Twitter!**

@ConvertingColor