

Converting Colors

$Y_{xy}(64.2881, 0.3226, 0.3254)$

Have a look what the booklet for
Yxy(64.2881, 0.3226, 0.3254)
contains.

Yxy(64.2757, 0.3228, 0.3257)	3
<i>Conversions</i>	4
<i>Details</i>	6
<i>Harmonies</i>	12
<i>Previews</i>	24
<i>Color Blindness Simulation</i>	27
<i>CSS Examples</i>	30

Color

Yxy(64.2757, 0.3228, 0.3257)

Conversions

Conversions Part 1

Format	Color
Hex	DECED1
RGB	222, 206, 209
RGB Percent	87%, 81%, 82%
CMY	0.1294, 0.1921, 0.1804
CMYK	0.00, 0.07, 0.06, 0.13
HSL	349°, 20%, 84%
HSV	349°, 7%, 87%
XYZ	63.7034, 64.2757, 69.3672
YIQ	211.1260, 8.5730, 4.3250

Conversions

Conversions Part 2

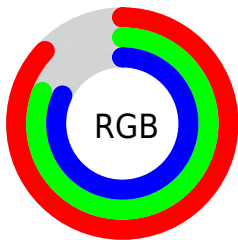
Format	Color
R _Y B	222, 206, 209
Decimal	14601937
CIE Lab	84.11, 6.06, 0.51
CIE LCh	84, 6.084, 4.805
Yxy	64.2757, 0.3228, 0.3257
Android (android.graphics.Color)	4292792017 (0xFFDECED1)
YUV	211.1260, -1.0481, 9.5365
Hunter-Lab	80.1721, 1.5318, 4.8211

Details

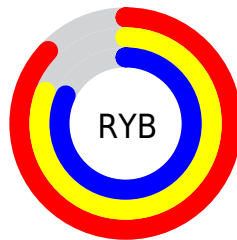
The Yxy color $64.2757, 0.3228, 0.3257$ is a light color, and the websafe version is hex `CCCCCC`. A complement of this color would be $70.4803, 0.3035, 0.3323$, and the grayscale version is $65.2332, 0.3127, 0.3290$.

A 20% lighter version of the original color is $100.0000, 0.3127, 0.3290$, and $33.0385, 0.3251, 0.3247$ is the 20% darker color. If you saturate the color by 10%, you get $53.4894, 0.3396, 0.3208$, and if you desaturate by 10%, it is $76.6786, 0.3092, 0.3302$.

Distribution



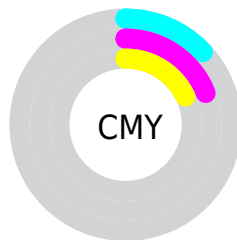
- Red (87%)
- Green (81%)
- Blue (82%)



- Red (87%)
- Yellow (81%)
- Blue (82%)



- Cyan (0%)
- Magenta (7%)
- Yellow (6%)
- Black (13%)



- Cyan (13%)
- Magenta (19%)
- Yellow (18%)

Brightness & Saturation Gradients

These gradients show how the Yxy color 64.2757, 0.3228, 0.3257 changes by changing the brightness by 10 percent. The first figure shows a shift by +10% for each color and the second figure -10%.

Similar to the brightness gradients but the following saturation gradients show a change of the Yxy color 64.2757, 0.3228, 0.3257 by changing the saturation by 10% instead.

64.2757, 0.3228,
0.3257

64.2757, 0.3228,
0.3257

440.1846, 0.3180,
0.3273

46.8740, 0.3239,
0.3253

111.0079, 0.3211,
0.3263

32.9361, 0.3253,
0.3249

141.1072, 0.3205,
0.3265

22.0775, 0.3271,
0.3243

176.2078, 0.3199,
0.3267

13.9138, 0.3295,
0.3235

216.6941, 0.3194,
0.3268

8.0608, 0.3329,
0.3223

262.9506, 0.3190,
0.3270

4.1339, 0.3379,
0.3206

315.3615, 0.3186,

1.7487, 0.3464,

0.3271

374.3114, 0.3183,
0.3272

0.3178

0.4549, 0.3882,
0.3043

0.0000, 0.0000,
0.0000

64.2757, 0.3228,
0.3257

64.2757, 0.3228,
0.3257

53.4894, 0.3396,
0.3208

76.6786, 0.3092,
0.3302

44.2449, 0.3605,
0.3158

90.7520, 0.2982,
0.3344

36.4742, 0.3861,
0.3107

94.2696, 0.2929,
0.3289

30.1006, 0.4170,
0.3061

■ 25.0410, 0.4533,
0.3024

■ 21.2030, 0.4939,
0.3007

■ 18.4821, 0.5360,
0.3016

■ 16.7565, 0.5751,
0.3060

■ 15.8660, 0.6061,
0.3133

Harmonies

Analogous

The Analogous color harmony consists of three colors that are next to each other on the color wheel.



64.2757, 0.3158, 0.3199



64.2757, 0.3228, 0.3257



64.2757, 0.3271, 0.3324

Triad

The Triadic color harmony groups three colors that are evenly spaced from another and form a triangle on the color wheel.



64.2757, 0.3228, 0.3257



64.2757, 0.3172, 0.3419



64.2757, 0.2982, 0.3195

Complementary

The Complementary color scheme is a pair of colors which are on the opposite of each other on the color wheel.



64.2757, 0.3228, 0.3257



70.4803, 0.3035, 0.3323

Split Complementary

Split-complementary colors differ from the complementary color scheme. The scheme consists of three colors, the original color and two neighbors of the complement color.



64.2757, 0.2986, 0.3253



64.2757, 0.3228, 0.3257



64.2757, 0.3095, 0.3384

Square

The Square scheme is like the rectangle color scheme, but the four colors are evenly spaced on the color wheel.



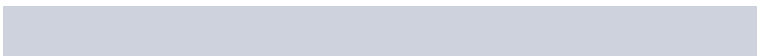
64.2757, 0.3228, 0.3257



64.2757, 0.3238, 0.3419



64.2757, 0.3027, 0.3323



64.2757, 0.3017, 0.3163

Rectangle

The Rectangle color scheme consists of four colors that form a rectangle on the color wheel.



64.2757, 0.3228, 0.3257



64.2757, 0.3278, 0.3366



64.2757, 0.3027, 0.3323



64.2757, 0.2979, 0.3212

Sweetspot

The Sweet Spot groups the original color and five complimentary colors.



64.2785, 0.3228, 0.3257



96.5249, 0.3154, 0.3281



64.4488, 0.3111, 0.3113



20.6967, 0.3152, 0.3281



0.0000, 0.0000, 0.0000



21.4041, 0.3127, 0.3290

Same Dimension

The Same Dimension uses a secret algorithm to generate beautiful new colors.



64.2785, 0.3228, 0.3257



85.0773, 0.3257, 0.3248



66.4775, 0.3245, 0.3344



13.7422, 0.3263, 0.3246



9.3335, 0.6101, 0.3135



0.6592, 0.5686, 0.2906

Inverse Universe

The Inverse Universe completely reimagines the original color for something new.



64.2785, 0.3228, 0.3257



85.0773, 0.3257, 0.3248



68.1265, 0.3016, 0.3236



13.7422, 0.3263, 0.3246



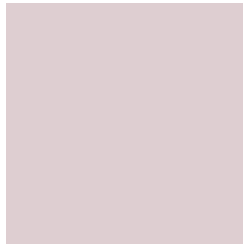
9.3335, 0.6101, 0.3135



0.6592, 0.5686, 0.2906

Previews

White Background



This preview shows how the Yxy color 64.2757, 0.3228, 0.3257 looks on a white background.

Color Contrast Check

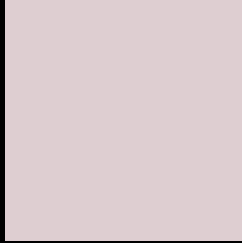
Large Text (above 18pt) WCAG AA × Fail

Any Text WCAG AA × Fail

Large Text (above 18pt) WCAG AAA × Fail

Any Text WCAG AAA × Fail

Black Background



This preview shows how the Yxy color 64.2757, 0.3228, 0.3257 looks on a black background.

Color Contrast Check

Large Text (above 18pt) WCAG AA ✓ Pass

Any Text WCAG AA ✓ Pass

Large Text (above 18pt) WCAG AAA ✓ Pass

Any Text WCAG AAA ✓ Pass

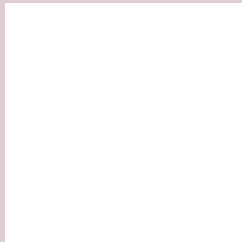
If you want to check with other color combinations, try the [Color Contrast Checker](#).

Yxy 64.2757, 0.3228, 0.3257

Background



This preview shows how black text looks on a background with the Yxy color 64.2757, 0.3228, 0.3257.



This preview shows how white text looks on a background with the Yxy color 64.2757, 0.3228, 0.3257.

Color Blindness Simulation

Color vision deficiency is a very complex topic, and I could not describe the different causes any better than Wikipedia does, so if you want to learn more, you should check out their [article about color blindness](#).

Dichromacy



Original Color

64.2757, 0.3228, 0.3257

Protanopia

64.4502, 0.3143, 0.3267

Deuteranopia

64.1880, 0.3286, 0.3214



Tritanopia

64.2003, 0.3166, 0.3115

Trichromacy



Original Color

64.2757, 0.3228, 0.3257

Protanomaly

64.3638, 0.3173, 0.3268

Deuteranomaly

64.1698, 0.3261, 0.3224

Tritanomaly

64.3085, 0.3186, 0.3169

Monochromacy



Original Color

64.2757, 0.3228, 0.3257

Achromatopsia

65.1406, 0.3127, 0.3290

Achromatomaly

64.7011, 0.3165, 0.3279

CSS Examples

Text

The CSS property to change the color of the text to Yxy 64.2757, 0.3228, 0.3257 is called "color". The color property can be set on classes, ids or directly on the HTML element.

This example shows how text in the color `rgb(222, 206, 209)` looks like.

```
.text, #text, p{  
    color:rgb(222, 206, 209)  
}
```

If you want to add a text shadow in that color use the text-shadow property, you can generate a text shadow directly with our [CSS Text Shadow Generator](#).

Here you see how black text with a 4 pixel rgb(222, 206, 209) colored shadow looks like.

```
.shadow{ text-shadow: 4px 4px 2px rgb(222, 206, 209) }
```

Border

The CSS property to change the border of an element to Yxy 64.2757, 0.3228, 0.3257 is called "border". The border property can be set on classes, ids or directly on the HTML element.

This example shows the color as border, it can be applied via the CSS property "border" or "border-color".

```
.border, #border, table{ border:4px solid rgb(222, 206, 209) }
```

If only the border color should be changed use the property `border-color`.

```
.border{ border-color:rgb(222, 206, 209) }
```

If you want to add a box shadow in that color use:

Here you see how a box with a 4 pixel `rgb(222, 206, 209)` colored shadow looks like.

```
.boxshadow{ -moz-box-shadow:4px 4px 4px  
4px rgb(222, 206, 209); -webkit-box-  
shadow:4px 4px 4px 4px rgb(222, 206, 209);  
box-shadow:4px 4px 4px 4px rgb(222, 206,  
209) }
```


Background

The CSS property to change the background color of an element to Yxy 64.2757, 0.3228, 0.3257 is called "background". The background property can be set on classes, ids or directly on the HTML element.

```
.background, #background, body{  
background: rgb(222, 206, 209) }
```

If only the background color should be changed can be used:

```
.background{ background-color: rgb(222,  
206, 209) }
```

This example shows the color as background, it is applied via the CSS property "background".

To optimize and compress your CSS code, you can use our [online CSS compressor and optimizer](#) based on csstidy. If you want to create a linear or radial gradient as background or border, check our [CSS Gradient Generator](#).

Hey! You found this booklet interesting? Support Converting Colors with the new Membership Option!

The pro membership hides all ads, plus gives you double the colors in the color bucket, and more awesome pro features!

[Learn more, Memberships starting at \\$2.50/m!](#)

**Follow me
on Twitter!**

@ConvertingColor