

# Converting Colors

Yxy(64.3516, 0.3364, 0.3307)

Have a look what the booklet for  
Yxy(64.3516, 0.3364, 0.3307)  
contains.

<b>Yxy(64.1319, 0.3362, 0.3302)</b> .....	3
<b>Conversions</b> .....	4
<b>Details</b> .....	6
<b>Harmonies</b> .....	12
<b>Previews</b> .....	24
<b>Color Blindness Simulation</b> .....	27
<b>CSS Examples</b> .....	30

# Color

**Yxy(64.1319, 0.3362, 0.3302)**

# Conversions

## Conversions Part 1

Format	Color
Hex	E8CBCA
RGB	232, 203, 202
RGB Percent	91%, 80%, 79%
CMY	0.0901, 0.2039, 0.2080
CMYK	0.00, 0.13, 0.13, 0.09
HSL	2°, 40%, 85%
HSV	2°, 13%, 91%
XYZ	65.2972, 64.1319, 64.7923
YIQ	211.5570, 17.6050, 5.8370

# Conversions

## Conversions Part 2

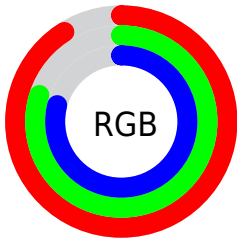
<b>Format</b>	<b>Color</b>
R <sub>Y</sub> B	232, 203, 202
Decimal	15256522
CIE Lab	84.03, 10.00, 4.25
CIE LCh	84, 10.869, 23.020
Yxy	64.1319, 0.3362, 0.3302
Android (android.graphics.Color)	4293446602 (0xFFE8CBCA)
YUV	211.5570, -4.7116, 17.9285
Hunter-Lab	80.0824, 5.4003, 8.0879

# Details

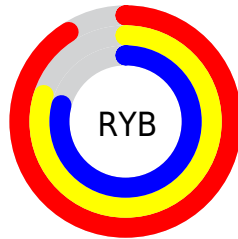
The Yxy color  $64.1319, 0.3362, 0.3302$  is a light color, and the websafe version is hex `FFCCCC`. A complement of this color would be  $75.5242, 0.2929, 0.3278$ , and the grayscale version is  $65.5539, 0.3127, 0.3290$ .

A 20% lighter version of the original color is  $100.0000, 0.3127, 0.3290$ , and  $32.8631, 0.3419, 0.3305$  is the 20% darker color. If you saturate the color by 10%, you get  $53.2893, 0.3595, 0.3312$ , and if you desaturate by 10%, it is  $76.6744, 0.3175, 0.3293$ .

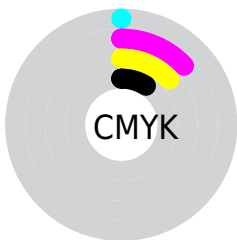
# Distribution



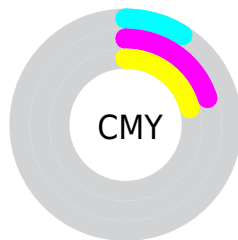
- Red (91%)
- Green (80%)
- Blue (79%)



- Red (91%)
- Yellow (80%)
- Blue (79%)



- Cyan (0%)
- Magenta (13%)
- Yellow (13%)
- Black (9%)




- Cyan (9%)
- Magenta (20%)
- Yellow (21%)


# Brightness & Saturation Gradients

These gradients show how the Yxy color 64.1319, 0.3362, 0.3302 changes by changing the brightness by 10 percent. The first figure shows a shift by +10% for each color and the second figure -10%.


Similar to the brightness gradients but the following saturation gradients show a change of the Yxy color 64.1319, 0.3362, 0.3302 by changing the saturation by 10% instead.




 64.1319, 0.3362,  
0.3302

 64.1319, 0.3362,  
0.3302

439.6658, 0.3250,  
0.3297

 46.7575, 0.3388,  
0.3303


110.8009, 0.3323,  
0.3301

 32.8440, 0.3421,  
0.3304


140.8642, 0.3307,  
0.3300

 22.0070, 0.3464,  
0.3305


175.9261, 0.3295,  
0.3299

 13.8620, 0.3521,  
0.3306

216.3707, 0.3283,  
0.3299

 8.0248, 0.3600,  
0.3306

262.5827, 0.3273,  
0.3298

 4.1108, 0.3720,  
0.3305

314.9462, 0.3265,

 1.7357, 0.3921,

0.3298

0.3300

373.8458, 0.3257,  
0.3298

0.4466, 0.5126,  
0.3424

0.0000, 0.0000,  
0.0000

64.1319, 0.3362,  
0.3302

64.1319, 0.3362,  
0.3302

53.2893, 0.3595,  
0.3312

76.6744, 0.3175,  
0.3293

44.0654, 0.3884,  
0.3323

90.9764, 0.3025,  
0.3284

36.3852, 0.4236,  
0.3333

95.8996, 0.2988,  
0.3290

30.1644, 0.4652,  
0.3341

■ 25.3105, 0.5116,  
0.3346

■ 21.7208, 0.5586,  
0.3344

■ 19.2778, 0.5995,  
0.3336

■ 17.8422, 0.6274,  
0.3321

■ 17.3331, 0.6382,  
0.3315

# Harmonies

## Analogous

The Analogous color harmony consists of three colors that are next to each other on the color wheel.



64.1319, 0.3262, 0.3187



64.1319, 0.3362, 0.3302



64.1319, 0.3397, 0.3417

# Triad

The Triadic color harmony groups three colors that are evenly spaced from another and form a triangle on the color wheel.



64.1319, 0.3362, 0.3302



64.1319, 0.3122, 0.3492



64.1319, 0.2900, 0.3079

# Complementary

The Complementary color scheme is a pair of colors which are on the opposite of each other on the color wheel.



64.1319, 0.3362, 0.3302



75.5242, 0.2929, 0.3278

# Split Complementary

Split-complementary colors differ from the complementary color scheme. The scheme consists of three colors, the original color and two neighbors of the complement color.



64.1319, 0.2864, 0.3155



64.1319, 0.3362, 0.3302



64.1319, 0.2991, 0.3396

# Square

The Square scheme is like the rectangle color scheme, but the four colors are evenly spaced on the color wheel.



64.1319, 0.3362, 0.3302



64.1319, 0.3257, 0.3530



64.1319, 0.2898, 0.3271



64.1319, 0.2995, 0.3060



# Rectangle

The Rectangle color scheme consists of four colors that form a rectangle on the color wheel.



64.1319, 0.3362, 0.3302



64.1319, 0.3379, 0.3478



64.1319, 0.2898, 0.3271



64.1319, 0.2880, 0.3098

# Sweetspot

The Sweet Spot groups the original color and five complimentary colors.



64.1348, 0.3362, 0.3302



93.2368, 0.3193, 0.3294



65.1554, 0.3149, 0.2981



19.6927, 0.3206, 0.3294



0.0000, 0.0000, 0.0000



21.4041, 0.3127, 0.3290



# Same Dimension

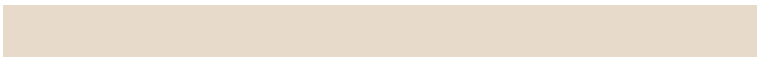
The Same Dimension uses a secret algorithm to generate beautiful new colors.



64.1348, 0.3362, 0.3302



75.0350, 0.3429, 0.3305



71.5632, 0.3340, 0.3464



14.4471, 0.3292, 0.3299



9.6577, 0.6375, 0.3320



0.7419, 0.6302, 0.3378



# Inverse Universe

The Inverse Universe completely reimagines the original color for something new.



75.5242, 0.2929, 0.3278



92.1729, 0.2883, 0.3275



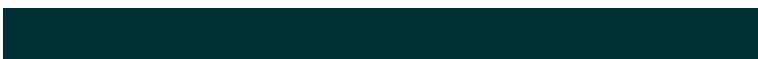
67.4872, 0.2925, 0.3110



16.2467, 0.2982, 0.3281



32.8736, 0.2217, 0.3182

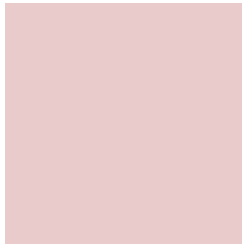


2.4561, 0.2222, 0.3199



# Previews

## White Background



This preview shows how the Yxy color 64.1319, 0.3362, 0.3302 looks on a white background.

## Color Contrast Check

Large Text (above 18pt) WCAG AA × Fail

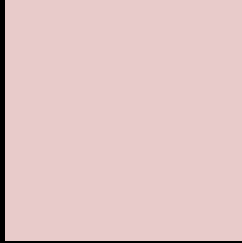
Any Text WCAG AA × Fail

Large Text (above 18pt) WCAG AAA × Fail

Any Text WCAG AAA × Fail



# Black Background



This preview shows how the Yxy color 64.1319, 0.3362, 0.3302 looks on a black background.

## Color Contrast Check

Large Text (above 18pt) WCAG AA ✓ Pass

Any Text WCAG AA ✓ Pass

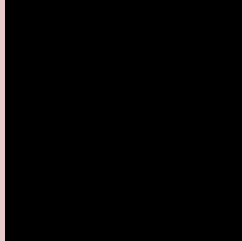
Large Text (above 18pt) WCAG AAA ✓ Pass

Any Text WCAG AAA ✓ Pass

If you want to check with other color combinations, try the [Color Contrast Checker](#).

**Yxy 64.1319, 0.3362, 0.3302**

## Background



This preview shows how black text looks on a background with the Yxy color 64.1319, 0.3362, 0.3302.



This preview shows how white text looks on a background with the Yxy color 64.1319, 0.3362, 0.3302.

# Color Blindness Simulation

Color vision deficiency is a very complex topic, and I could not describe the different causes any better than Wikipedia does, so if you want to learn more, you should check out their [article about color blindness](#).

## Dichromacy



### Original Color

64.1319, 0.3362, 0.3302

### Protanopia

64.3048, 0.3193, 0.3336

### Deuteranopia

64.2998, 0.3369, 0.3302



## Tritanopia

64.2236, 0.3275, 0.3129

# Trichromacy



## Original Color

64.1319, 0.3362, 0.3302

## Protanomaly

64.3574, 0.3255, 0.3324

## Deuteranomaly

64.2998, 0.3369, 0.3302

## Tritanomaly

64.2678, 0.3303, 0.3193

# Monochromacy



## Original Color

64.1319, 0.3362, 0.3302

## Achromatopsia

65.8375, 0.3127, 0.3290

## Achromatomaly

65.2151, 0.3210, 0.3301

# CSS Examples

## Text

The CSS property to change the color of the text to Yxy 64.1319, 0.3362, 0.3302 is called "color". The color property can be set on classes, ids or directly on the HTML element.

This example shows how text in the color `rgb(232, 203, 202)` looks like.

```
.text, #text, p{  
    color:rgb(232, 203, 202)  
}
```

If you want to add a text shadow in that color use the text-shadow property, you can generate a text shadow directly with our [CSS Text Shadow Generator](#).

Here you see how black text with a 4 pixel rgb(232, 203, 202) colored shadow looks like.

```
.shadow{ text-shadow: 4px 4px 2px rgb(232, 203, 202) }
```

## Border

The CSS property to change the border of an element to Yxy 64.1319, 0.3362, 0.3302 is called "border". The border property can be set on classes, ids or directly on the HTML element.

This example shows the color as border, it can be applied via the CSS property "border" or "border-color".

```
.border, #border, table{ border:4px solid rgb(232, 203, 202) }
```

If only the border color should be changed use the property border-color.

```
.border{ border-color:rgb(232, 203, 202) }
```

If you want to add a box shadow in that color use:

Here you see how a box with a 4 pixel rgb(232, 203, 202) colored shadow looks like.

```
.boxshadow{ -moz-box-shadow:4px 4px 4px  
4px rgb(232, 203, 202); -webkit-box-  
shadow:4px 4px 4px 4px rgb(232, 203, 202);  
box-shadow:4px 4px 4px 4px rgb(232, 203,  
202) }
```



# Background

The CSS property to change the background color of an element to Yxy 64.1319, 0.3362, 0.3302 is called "background". The background property can be set on classes, ids or directly on the HTML element.

```
.background, #background, body{  
background: rgb(232, 203, 202) }
```

If only the background color should be changed can be used:

```
.background{ background-color: rgb(232,  
203, 202) }
```

This example shows the color as background, it is applied via the CSS property "background".

To optimize and compress your CSS code, you can use our [online CSS compressor and optimizer](#) based on csstidy. If you want to create a linear or radial gradient as background or border, check our [CSS Gradient Generator](#).

Hey! You found this booklet interesting? Support Converting Colors with the new Membership Option!

The pro membership hides all ads, plus gives you double the colors in the color bucket, and more awesome pro features!

**[Learn more, Memberships starting at \\$2.50/m!](#)**

**Follow me  
on Twitter!**

@ConvertingColor