

Converting Colors

Yxy(64.4471, 0.3321, 0.3258)

Have a look what the booklet for
Yxy(64.4471, 0.3321, 0.3258)
contains.

Yxy(64.1570, 0.3324, 0.3258)	3
<i>Conversions</i>	4
<i>Details</i>	6
<i>Harmonies</i>	12
<i>Previews</i>	24
<i>Color Blindness Simulation</i>	27
<i>CSS Examples</i>	30

Color

Yxy(64.1570, 0.3324, 0.3258)

Conversions

Conversions Part 1

Format	Color
Hex	E7CBCE
RGB	231, 203, 206
RGB Percent	91%, 80%, 81%
CMY	0.0940, 0.2039, 0.1923
CMYK	0.00, 0.12, 0.11, 0.09
HSL	354°, 37%, 85%
HSV	354°, 12%, 91%
XYZ	65.4567, 64.1570, 67.3077
YIQ	211.7140, 15.7250, 6.8690

Conversions

Conversions Part 2

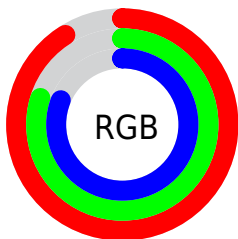
Format	Color
R _Y B	231, 203, 206
Decimal	15190990
CIE Lab	84.05, 10.31, 2.12
CIE LCh	84, 10.523, 11.643
Yxy	64.1570, 0.3324, 0.3258
Android (android.graphics.Color)	4293381070 (0xFFE7CBCE)
YUV	211.7140, -2.8170, 16.9138
Hunter-Lab	80.0981, 5.6998, 6.2463

Details

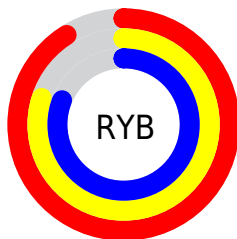
The Yxy color $64.1570, 0.3324, 0.3258$ is a light color, and the websafe version is hex `FFCCCC`. A complement of this color would be $75.4718, 0.2959, 0.3322$, and the grayscale version is $65.6526, 0.3127, 0.3290$.

A 20% lighter version of the original color is $100.0000, 0.3127, 0.3290$, and $32.8759, 0.3368, 0.3248$ is the 20% darker color. If you saturate the color by 10%, you get $53.1104, 0.3531, 0.3230$, and if you desaturate by 10%, it is $76.9671, 0.3158, 0.3285$.

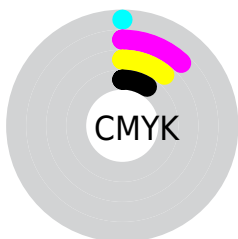
Distribution



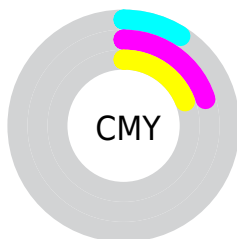
- Red (91%)
- Green (80%)
- Blue (81%)



- Red (91%)
- Yellow (80%)
- Blue (81%)



- Cyan (0%)
- Magenta (12%)
- Yellow (11%)
- Black (9%)





- Cyan (9%)
- Magenta (20%)
- Yellow (19%)

Brightness & Saturation Gradients

These gradients show how the Yxy color 64.1570, 0.3324, 0.3258 changes by changing the brightness by 10 percent. The first figure shows a shift by +10% for each color and the second figure -10%.

Similar to the brightness gradients but the following saturation gradients show a change of the Yxy color 64.1570, 0.3324, 0.3258 by changing the saturation by 10% instead.


 64.1570, 0.3324,
0.3258

 64.1570, 0.3324,
0.3258


439.7564, 0.3231,
0.3274

 46.7778, 0.3346,
0.3254


110.8370, 0.3291,
0.3264

 32.8601, 0.3374,
0.3249


140.9067, 0.3278,
0.3266

 22.0193, 0.3409,
0.3243


175.9753, 0.3268,
0.3268

 13.8711, 0.3456,
0.3234


216.4272, 0.3258,
0.3269

 8.0310, 0.3523,
0.3222

262.6469, 0.3250,
0.3271

 4.1148, 0.3622,
0.3203

315.0187, 0.3243,

 1.7380, 0.3789,

0.3272

0.3168

373.9271, 0.3236,
0.3273

0.4481, 0.4625,
0.3059

0.0000, 0.0000,
0.0000

64.1570, 0.3324,
0.3258

64.1570, 0.3324,
0.3258

53.1104, 0.3531,
0.3230

76.9671, 0.3158,
0.3285

43.7421, 0.3787,
0.3201

91.6043, 0.3025,
0.3309

35.9725, 0.4101,
0.3174

95.7346, 0.2982,
0.3290

29.7120, 0.4476,
0.3151

■ 24.8625, 0.4904,
0.3138

■ 21.3142, 0.5357,
0.3141

■ 18.9408, 0.5783,
0.3164

■ 17.5912, 0.6120,
0.3206

■ 17.0628, 0.6295,
0.3241

Harmonies

Analogous

The Analogous color harmony consists of three colors that are next to each other on the color wheel.



64.1570, 0.3211, 0.3154



64.1570, 0.3324, 0.3258



64.1570, 0.3384, 0.3373

Triad

The Triadic color harmony groups three colors that are evenly spaced from another and form a triangle on the color wheel.



64.1570, 0.3324, 0.3258



64.1570, 0.3174, 0.3507



64.1570, 0.2886, 0.3108

Complementary

The Complementary color scheme is a pair of colors which are on the opposite of each other on the color wheel.



64.1570, 0.3324, 0.3258



75.4718, 0.2959, 0.3322

Split Complementary

Split-complementary colors differ from the complementary color scheme. The scheme consists of three colors, the original color and two neighbors of the complement color.



64.1570, 0.2877, 0.3199



64.1570, 0.3324, 0.3258



64.1570, 0.3041, 0.3433

Square

The Square scheme is like the rectangle color scheme, but the four colors are evenly spaced on the color wheel.



64.1570, 0.3324, 0.3258



64.1570, 0.3296, 0.3519



64.1570, 0.2933, 0.3318



64.1570, 0.2958, 0.3067

Rectangle

The Rectangle color scheme consists of four colors that form a rectangle on the color wheel.



64.1570, 0.3324, 0.3258



64.1570, 0.3385, 0.3440



64.1570, 0.2933, 0.3318



64.1570, 0.2876, 0.3133

Sweetspot

The Sweet Spot groups the original color and five complimentary colors.



64.1598, 0.3324, 0.3258



93.0905, 0.3187, 0.3280



64.9371, 0.3117, 0.2989



19.6559, 0.3198, 0.3278



0.0000, 0.0000, 0.0000



21.4041, 0.3127, 0.3290

Same Dimension

The Same Dimension uses a secret algorithm to generate beautiful new colors.



64.1598, 0.3324, 0.3258



75.9672, 0.3380, 0.3250



69.2702, 0.3331, 0.3407



14.3927, 0.3276, 0.3265



9.5711, 0.6272, 0.3229



0.7157, 0.5985, 0.3071

Inverse Universe

The Inverse Universe completely reimagines the original color for something new.



64.1598, 0.3324, 0.3258



75.9672, 0.3380, 0.3250



69.8045, 0.2939, 0.3170



14.3927, 0.3276, 0.3265



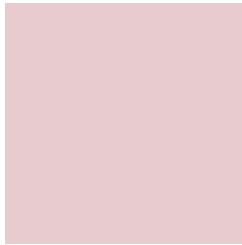
9.5711, 0.6272, 0.3229



0.7157, 0.5985, 0.3071

Previews

White Background



This preview shows how the Yxy color 64.1570, 0.3324, 0.3258 looks on a white background.

Color Contrast Check

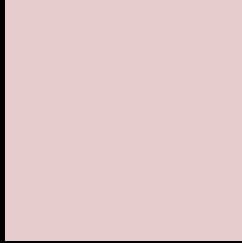
Large Text (above 18pt) WCAG AA × Fail

Any Text WCAG AA × Fail

Large Text (above 18pt) WCAG AAA × Fail

Any Text WCAG AAA × Fail

Black Background



This preview shows how the Yxy color 64.1570, 0.3324, 0.3258 looks on a black background.

Color Contrast Check

Large Text (above 18pt) WCAG AA ✓ Pass

Any Text WCAG AA ✓ Pass

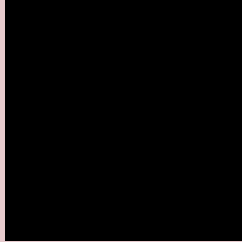
Large Text (above 18pt) WCAG AAA ✓ Pass

Any Text WCAG AAA ✓ Pass

If you want to check with other color combinations, try the [Color Contrast Checker](#).

Yxy 64.1570, 0.3324, 0.3258

Background



This preview shows how black text looks on a background with the Yxy color 64.1570, 0.3324, 0.3258.



This preview shows how white text looks on a background with the Yxy color 64.1570, 0.3324, 0.3258.

Color Blindness Simulation

Color vision deficiency is a very complex topic, and I could not describe the different causes any better than Wikipedia does, so if you want to learn more, you should check out their [article about color blindness](#).

Dichromacy



Original Color

64.1570, 0.3324, 0.3258

Protanopia

64.3505, 0.3157, 0.3290

Deuteranopia

64.1570, 0.3324, 0.3258



Tritanopia

64.1067, 0.3259, 0.3118

Trichromacy



Original Color

64.1570, 0.3324, 0.3258

Protanomaly

64.3954, 0.3219, 0.3279

Deuteranomaly

64.1570, 0.3324, 0.3258

Tritanomaly

64.2010, 0.3280, 0.3171

Monochromacy



Original Color

64.1570, 0.3324, 0.3258

Achromatopsia

65.8375, 0.3127, 0.3290

Achromatomaly

65.3141, 0.3195, 0.3279

CSS Examples

Text

The CSS property to change the color of the text to Yxy 64.1570, 0.3324, 0.3258 is called "color". The color property can be set on classes, ids or directly on the HTML element.

This example shows how text in the color `rgb(231, 203, 206)` looks like.

```
.text, #text, p{  
    color:rgb(231, 203, 206)  
}
```

If you want to add a text shadow in that color use the text-shadow property, you can generate a text shadow directly with our [CSS Text Shadow Generator](#).

Here you see how black text with a 4 pixel rgb(231, 203, 206) colored shadow looks like.

```
.shadow{ text-shadow: 4px 4px 2px rgb(231, 203, 206) }
```

Border

The CSS property to change the border of an element to Yxy 64.1570, 0.3324, 0.3258 is called "border". The border property can be set on classes, ids or directly on the HTML element.

This example shows the color as border, it can be applied via the CSS property "border" or "border-color".

```
.border, #border, table{ border:4px solid rgb(231, 203, 206) }
```

If only the border color should be changed use the property border-color.

```
.border{ border-color:rgb(231, 203, 206) }
```

If you want to add a box shadow in that color use:

Here you see how a box with a 4 pixel rgb(231, 203, 206) colored shadow looks like.

```
.boxshadow{ -moz-box-shadow:4px 4px 4px  
4px rgb(231, 203, 206); -webkit-box-  
shadow:4px 4px 4px 4px rgb(231, 203, 206);  
box-shadow:4px 4px 4px 4px rgb(231, 203,  
206) }
```


Background

The CSS property to change the background color of an element to Yxy 64.1570, 0.3324, 0.3258 is called "background". The background property can be set on classes, ids or directly on the HTML element.

```
.background, #background, body{  
background: rgb(231, 203, 206) }
```

If only the background color should be changed can be used:

```
.background{ background-color: rgb(231,  
203, 206) }
```

This example shows the color as background, it is applied via the CSS property "background".

To optimize and compress your CSS code, you can use our [online CSS compressor and optimizer](#) based on csstidy. If you want to create a linear or radial gradient as background or border, check our [CSS Gradient Generator](#).

Hey! You found this booklet interesting? Support Converting Colors with the new Membership Option!

The pro membership hides all ads, plus gives you double the colors in the color bucket, and more awesome pro features!

[Learn more, Memberships starting at \\$2.50/m!](#)

**Follow me
on Twitter!**

@ConvertingColor