

Converting Colors

Yxy(64.4912, 0.3214, 0.3242)

Have a look what the booklet for
Yxy(64.4912, 0.3214, 0.3242)
contains.

Yxy(64.3754, 0.3214, 0.3235)	3
<i>Conversions</i>	4
<i>Details</i>	6
<i>Harmonies</i>	12
<i>Previews</i>	24
<i>Color Blindness Simulation</i>	27
<i>CSS Examples</i>	30

Color

Yxy(64.3754, 0.3214, 0.3235)

Conversions

Conversions Part 1

Format	Color
Hex	DECED3
RGB	222, 206, 211
RGB Percent	87%, 81%, 83%
CMY	0.1293, 0.1922, 0.1727
CMYK	0.00, 0.07, 0.05, 0.13
HSL	341°, 20%, 84%
HSV	341°, 7%, 87%
XYZ	63.9575, 64.3754, 70.6637
YIQ	211.3540, 7.9310, 4.9470

Conversions

Conversions Part 2

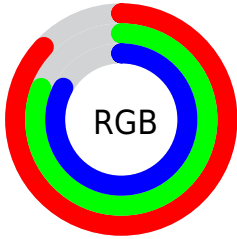
Format	Color
RYB	222, 206, 211
Decimal	14601939
CIELab	84.16, 6.42, -0.47
CIELCh	84, 6.437, 355.843
Yxy	64.3754, 0.3214, 0.3235
Android (android.graphics.Color)	4292792019 (0xFFDECED3)
YUV	211.3540, -0.1745, 9.3365
Hunter-Lab	80.2343, 1.8785, 3.9463

Details

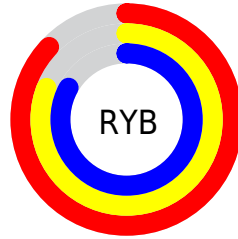
The Yxy color **64.3754, 0.3214, 0.3235** is a light color, and the websafe version is hex **CCCCCC**. A complement of this color would be **70.3939, 0.3047, 0.3346**, and the grayscale version is **65.3879, 0.3127, 0.3290**.

A 20% lighter version of the original color is **100.0000, 0.3127, 0.3290**, and **33.1063, 0.3232, 0.3218** is the 20% darker color. If you saturate the color by 10%, you get **53.7005, 0.3358, 0.3155**, and if you desaturate by 10%, it is **76.6392, 0.3097, 0.3310**.

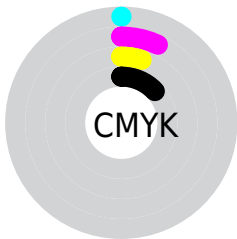
Distribution



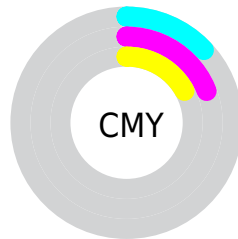
- Red (87%)
- Green (81%)
- Blue (83%)



- Red (87%)
- Yellow (81%)
- Blue (83%)



- Cyan (0%)
- Magenta (7%)
- Yellow (5%)
- Black (13%)



- Cyan (13%)
- Magenta (19%)
- Yellow (17%)

Brightness & Saturation Gradients

These gradients show how the Yxy color 64.3754, 0.3214, 0.3235 changes by changing the brightness by 10 percent. The first figure shows a shift by +10% for each color and the second figure -10%.

Similar to the brightness gradients but the following saturation gradients show a change of the Yxy color 64.3754, 0.3214, 0.3235 by changing the saturation by 10% instead.

■ 64.3754, 0.3214,
0.3235

■ 64.3754, 0.3214,
0.3235

440.5440, 0.3173,
0.3261

■ 46.9548, 0.3224,
0.3229

111.1514, 0.3200,
0.3244

■ 32.9999, 0.3236,
0.3221

141.2756, 0.3194,
0.3248

■ 22.1264, 0.3251,
0.3212

176.4031, 0.3189,
0.3251

■ 13.9498, 0.3272,
0.3199

216.9183, 0.3185,
0.3253

■ 8.0858, 0.3300,
0.3180

263.2056, 0.3182,
0.3256

■ 4.1499, 0.3343,
0.3153

315.6494, 0.3178,

■ 1.7577, 0.3414,

0.3258

0.3109

374.6340, 0.3176,
0.3259

0.4606, 0.3741,
0.2898

0.0000, 0.0000,
0.0000

64.3754, 0.3214,
0.3235

64.3754, 0.3214,
0.3235

53.7005, 0.3358,
0.3155

76.6392, 0.3097,
0.3310

44.5410, 0.3534,
0.3071

90.5446, 0.3002,
0.3380

36.8302, 0.3747,
0.2986

94.2747, 0.2929,
0.3289

30.4932, 0.4004,
0.2907

■ 25.4482, 0.4304,
0.2841

■ 21.6046, 0.4642,
0.2798

■ 18.8601, 0.5002,
0.2792

■ 17.0950, 0.5358,
0.2832

■ 16.1514, 0.5675,
0.2918

Harmonies

Analogous

The Analogous color harmony consists of three colors that are next to each other on the color wheel.



64.3754, 0.3136, 0.3180



64.3754, 0.3214, 0.3235



64.3754, 0.3269, 0.3305

Triad

The Triadic color harmony groups three colors that are evenly spaced from another and form a triangle on the color wheel.



64.3754, 0.3214, 0.3235



64.3754, 0.3198, 0.3431



64.3754, 0.2971, 0.3206

Complementary

The Complementary color scheme is a pair of colors which are on the opposite of each other on the color wheel.



64.3754, 0.3214, 0.3235



70.3939, 0.3047, 0.3346

Split Complementary

Split-complementary colors differ from the complementary color scheme. The scheme consists of three colors, the original color and two neighbors of the complement color.



64.3754, 0.2987, 0.3273



64.3754, 0.3214, 0.3235



64.3754, 0.3117, 0.3404

Square

The Square scheme is like the rectangle color scheme, but the four colors are evenly spaced on the color wheel.



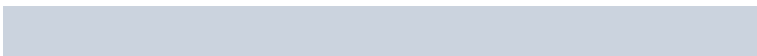
64.3754, 0.3214, 0.3235



64.3754, 0.3260, 0.3418



64.3754, 0.3040, 0.3346



64.3754, 0.2996, 0.3162

Rectangle

The Rectangle color scheme consists of four colors that form a rectangle on the color wheel.



64.3754, 0.3214, 0.3235



64.3754, 0.3285, 0.3351



64.3754, 0.3040, 0.3346



64.3754, 0.2972, 0.3226

Sweetspot

The Sweet Spot groups the original color and five complimentary colors.



64.3782, 0.3214, 0.3235



96.5646, 0.3150, 0.3275



64.1622, 0.3097, 0.3112



20.7048, 0.3149, 0.3276



0.0000, 0.0000, 0.0000



21.4041, 0.3127, 0.3290

Same Dimension

The Same Dimension uses a secret algorithm to generate beautiful new colors.



64.3782, 0.3214, 0.3235



85.2434, 0.3238, 0.3221



65.5612, 0.3247, 0.3323



13.7702, 0.3244, 0.3218



9.4961, 0.5717, 0.2923



0.6740, 0.5277, 0.2681

Inverse Universe

The Inverse Universe completely reimagines the original color for something new.



64.3782, 0.3214, 0.3235



85.2434, 0.3238, 0.3221



69.1086, 0.3016, 0.3257



13.7702, 0.3244, 0.3218



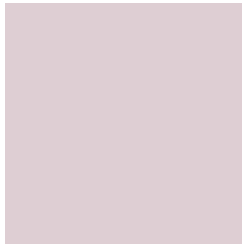
9.4961, 0.5717, 0.2923



0.6740, 0.5277, 0.2681

Previews

White Background



This preview shows how the Yxy color 64.3754, 0.3214, 0.3235 looks on a white background.

Color Contrast Check

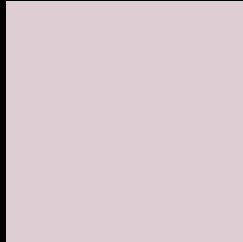
Large Text (above 18pt) WCAG AA × Fail

Any Text WCAG AA × Fail

Large Text (above 18pt) WCAG AAA × Fail

Any Text WCAG AAA × Fail

Black Background



This preview shows how the Yxy color 64.3754, 0.3214, 0.3235 looks on a black background.

Color Contrast Check

Large Text (above 18pt) WCAG AA ✓ Pass

Any Text WCAG AA ✓ Pass

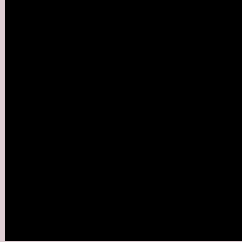
Large Text (above 18pt) WCAG AAA ✓ Pass

Any Text WCAG AAA ✓ Pass

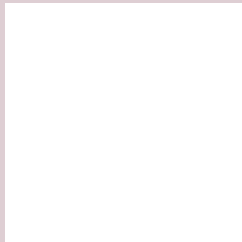
If you want to check with other color combinations, try the [Color Contrast Checker](#).

Yxy 64.3754, 0.3214, 0.3235

Background



This preview shows how black text looks on a background with the Yxy color 64.3754, 0.3214, 0.3235.



This preview shows how white text looks on a background with the Yxy color 64.3754, 0.3214, 0.3235.

Color Blindness Simulation

Color vision deficiency is a very complex topic, and I could not describe the different causes any better than Wikipedia does, so if you want to learn more, you should check out their [article about color blindness](#).

Dichromacy



Original Color

64.3754, 0.3214, 0.3235

Protanopia

64.5512, 0.3129, 0.3245

Deuteranopia

64.0730, 0.3271, 0.3203



Tritanopia

64.0942, 0.3151, 0.3104

Trichromacy



Original Color

64.3754, 0.3214, 0.3235

Protanomaly

64.4641, 0.3159, 0.3245

Deuteranomaly

64.0576, 0.3246, 0.3213

Tritanomaly

64.3604, 0.3179, 0.3158

Monochromacy



Original Color

64.3754, 0.3214, 0.3235

Achromatopsia

65.1406, 0.3127, 0.3290

Achromatomaly

64.7512, 0.3158, 0.3268

CSS Examples

Text

The CSS property to change the color of the text to Yxy 64.3754, 0.3214, 0.3235 is called "color". The color property can be set on classes, ids or directly on the HTML element.

This example shows how text in the color `rgb(222, 206, 211)` looks like.

```
.text, #text, p{  
    color:rgb(222, 206, 211)  
}
```

If you want to add a text shadow in that color use the text-shadow property, you can generate a text shadow directly with our [CSS Text Shadow Generator](#).

Here you see how black text with a 4 pixel rgb(222, 206, 211) colored shadow looks like.

```
.shadow{ text-shadow: 4px 4px 2px rgb(222, 206, 211) }
```

Border

The CSS property to change the border of an element to Yxy 64.3754, 0.3214, 0.3235 is called "border". The border property can be set on classes, ids or directly on the HTML element.

This example shows the color as border, it can be applied via the CSS property "border" or "border-color".

```
.border, #border, table{ border:4px solid rgb(222, 206, 211) }
```

If only the border color should be changed use the property `border-color`.

```
.border{ border-color:rgb(222, 206, 211) }
```

If you want to add a box shadow in that color use:

Here you see how a box with a 4 pixel `rgb(222, 206, 211)` colored shadow looks like.

```
.boxshadow{ -moz-box-shadow:4px 4px 4px  
4px rgb(222, 206, 211); -webkit-box-  
shadow:4px 4px 4px 4px rgb(222, 206, 211);  
box-shadow:4px 4px 4px 4px rgb(222, 206,  
211) }
```


Background

The CSS property to change the background color of an element to Yxy 64.3754, 0.3214, 0.3235 is called "background". The background property can be set on classes, ids or directly on the HTML element.

```
.background, #background, body{  
background: rgb(222, 206, 211) }
```

If only the background color should be changed can be used:

```
.background{ background-color: rgb(222,  
206, 211) }
```

This example shows the color as background, it is applied via the CSS property "background".

To optimize and compress your CSS code, you can use our [online CSS compressor and optimizer](#) based on csstidy. If you want to create a linear or radial gradient as background or border, check our [CSS Gradient Generator](#).

Hey! You found this booklet interesting? Support Converting Colors with the new Membership Option!

The pro membership hides all ads, plus gives you double the colors in the color bucket, and more awesome pro features!

[Learn more, Memberships starting at \\$2.50/m!](#)

**Follow me
on Twitter!**

@ConvertingColor