

Converting Colors

Yxy(64.5332, 0.3383, 0.3327)

Have a look what the booklet for
Yxy(64.5332, 0.3383, 0.3327)
contains.

Yxy(64.6795, 0.3383, 0.3334)	3
Conversions	4
Details	6
Harmonies	12
Previews	24
Color Blindness Simulation	27
CSS Examples	30

Color

Yxy(64.6795, 0.3383, 0.3334)

Conversions

Conversions Part 1

Format	Color
Hex	E9CCC8
RGB	233, 204, 200
RGB Percent	91%, 80%, 78%
CMY	0.0862, 0.2000, 0.2155
CMYK	0.00, 0.12, 0.14, 0.09
HSL	7°, 43%, 85%
HSV	7°, 14%, 91%
XYZ	65.6301, 64.6795, 63.6901
YIQ	212.2150, 18.5680, 4.9040

Conversions

Conversions Part 2

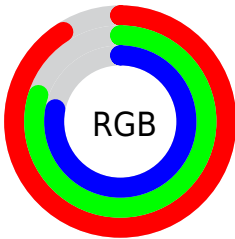
Format	Color
R _Y B	233, 205, 200
Decimal	15322312
CIE Lab	84.32, 9.53, 5.70
CIE LCh	84, 11.103, 30.886
Yxy	64.6795, 0.3383, 0.3334
Android (android.graphics.Color)	4293512392 (0xFFE9CCC8)
YUV	212.2150, -6.0220, 18.2284
Hunter-Lab	80.4236, 4.9247, 9.3428

Details

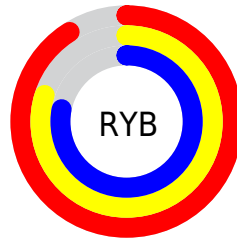
The Yxy color **64.6795, 0.3383, 0.3334** is a light color, and the websafe version is hex **FFCCCC**. A complement of this color would be **74.2400, 0.2911, 0.3246**, and the grayscale version is **66.0244, 0.3127, 0.3290**.

A 20% lighter version of the original color is **100.0000, 0.3127, 0.3290**, and **33.2351, 0.3448, 0.3348** is the 20% darker color. If you saturate the color by 10%, you get **54.5606, 0.3614, 0.3368**, and if you desaturate by 10%, it is **76.2534, 0.3195, 0.3302**.

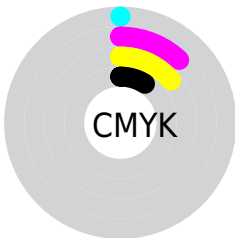
Distribution



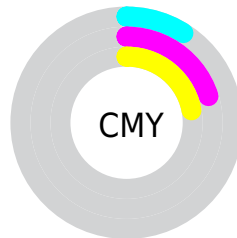
- Red (91%)
- Green (80%)
- Blue (78%)



- Red (91%)
- Yellow (80%)
- Blue (78%)



- Cyan (0%)
- Magenta (12%)
- Yellow (14%)
- Black (9%)





- Cyan (9%)
- Magenta (20%)
- Yellow (22%)

Brightness & Saturation Gradients

These gradients show how the Yxy color 64.6795, 0.3383, 0.3334 changes by changing the brightness by 10 percent. The first figure shows a shift by +10% for each color and the second figure -10%.

Similar to the brightness gradients but the following saturation gradients show a change of the Yxy color 64.6795, 0.3383, 0.3334 by changing the saturation by 10% instead.

 64.6795, 0.3383,
0.3334

 64.6795, 0.3383,
0.3334

441.6393, 0.3261,
0.3314

 47.2012, 0.3412,
0.3338


111.5890, 0.3340,
0.3327

 33.1948, 0.3447,
0.3343


141.7889, 0.3324,
0.3325

 22.2757, 0.3494,
0.3350


176.9983, 0.3310,
0.3323

 14.0596, 0.3555,
0.3358

217.6014, 0.3297,
0.3321

 8.1621, 0.3642,
0.3368

263.9827, 0.3287,
0.3319

 4.1989, 0.3771,
0.3381

316.5265, 0.3277,

 1.7854, 0.3987,

0.3317

0.3397

375.6172, 0.3269,
0.3316

0.4781, 0.5337,
0.3714

0.0000, 0.0000,
0.0000

64.6795, 0.3383,
0.3334

64.6795, 0.3383,
0.3334

54.5606, 0.3614,
0.3368

76.2534, 0.3195,
0.3302

45.8308, 0.3896,
0.3402

89.3276, 0.3041,
0.3273

38.4320, 0.4235,
0.3434

96.0668, 0.2994,
0.3290

32.2985, 0.4630,
0.3461

■ 27.3592, 0.5068,
0.3475

■ 23.5358, 0.5513,
0.3472

■ 20.7406, 0.5911,
0.3446

■ 18.8724, 0.6201,
0.3398

■ 18.1561, 0.6314,
0.3369

Harmonies

Analogous

The Analogous color harmony consists of three colors that are next to each other on the color wheel.



64.6795, 0.3296, 0.3214



64.6795, 0.3383, 0.3334



64.6795, 0.3399, 0.3446

Triad

The Triadic color harmony groups three colors that are evenly spaced from another and form a triangle on the color wheel.



64.6795, 0.3383, 0.3334



64.6795, 0.3085, 0.3475



64.6795, 0.2916, 0.3064

Complementary

The Complementary color scheme is a pair of colors which are on the opposite of each other on the color wheel.



64.6795, 0.3383, 0.3334



74.2400, 0.2911, 0.3246

Split Complementary

Split-complementary colors differ from the complementary color scheme. The scheme consists of three colors, the original color and two neighbors of the complement color.



64.6795, 0.2862, 0.3127



64.6795, 0.3383, 0.3334



64.6795, 0.2959, 0.3366

Square

The Square scheme is like the rectangle color scheme, but the four colors are evenly spaced on the color wheel.



64.6795, 0.3383, 0.3334



64.6795, 0.3225, 0.3531



64.6795, 0.2878, 0.3237



64.6795, 0.3025, 0.3061

Rectangle

The Rectangle color scheme consists of four colors that form a rectangle on the color wheel.



64.6795, 0.3383, 0.3334



64.6795, 0.3368, 0.3500



64.6795, 0.2878, 0.3237



64.6795, 0.2891, 0.3079

Sweetspot

The Sweet Spot groups the original color and five complimentary colors.



64.6824, 0.3383, 0.3334



93.7668, 0.3192, 0.3302



64.3188, 0.3171, 0.2980



19.8262, 0.3205, 0.3304



0.0000, 0.0000, 0.0000



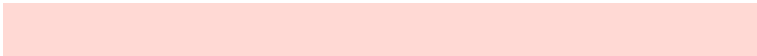
21.4041, 0.3127, 0.3290

Same Dimension

The Same Dimension uses a secret algorithm to generate beautiful new colors.



64.6824, 0.3383, 0.3334



75.5465, 0.3446, 0.3344



72.8824, 0.3358, 0.3509



15.3453, 0.3290, 0.3319



10.3936, 0.6297, 0.3382



0.9114, 0.6093, 0.3544

Inverse Universe

The Inverse Universe completely reimagines the original color for something new.



74.2400, 0.2911, 0.3246



89.4094, 0.2867, 0.3236



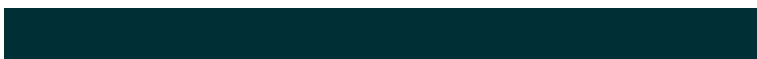
65.5960, 0.2904, 0.3060



16.7952, 0.2981, 0.3261



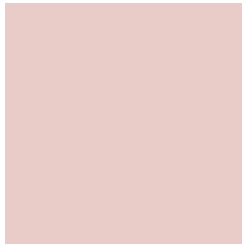
28.2428, 0.2141, 0.2907



2.3049, 0.2157, 0.2965

Previews

White Background



This preview shows how the Yxy color 64.6795, 0.3383, 0.3334 looks on a white background.

Color Contrast Check

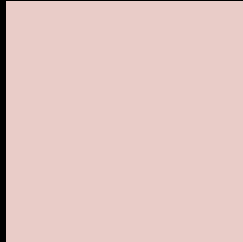
Large Text (above 18pt) WCAG AA × Fail

Any Text WCAG AA × Fail

Large Text (above 18pt) WCAG AAA × Fail

Any Text WCAG AAA × Fail

Black Background



This preview shows how the Yxy color 64.6795, 0.3383, 0.3334 looks on a black background.

Color Contrast Check

Large Text (above 18pt) WCAG AA ✓ Pass

Any Text WCAG AA ✓ Pass

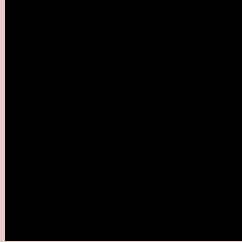
Large Text (above 18pt) WCAG AAA ✓ Pass

Any Text WCAG AAA ✓ Pass

If you want to check with other color combinations, try the [Color Contrast Checker](#).

Yxy 64.6795, 0.3383, 0.3334

Background



This preview shows how black text looks on a background with the Yxy color 64.6795, 0.3383, 0.3334.

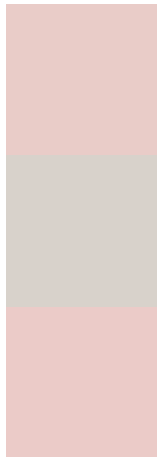


This preview shows how white text looks on a background with the Yxy color 64.6795, 0.3383, 0.3334.

Color Blindness Simulation

Color vision deficiency is a very complex topic, and I could not describe the different causes any better than Wikipedia does, so if you want to learn more, you should check out their [article about color blindness](#).

Dichromacy



Original Color

64.6795, 0.3383, 0.3334

Protanopia

65.0039, 0.3221, 0.3369

Deuteranopia

64.5442, 0.3401, 0.3323



Tritanopia

64.4452, 0.3275, 0.3119

Trichromacy



Original Color

64.6795, 0.3383, 0.3334

Protanomaly

64.9056, 0.3277, 0.3358

Deuteranomaly

64.3744, 0.3393, 0.3324

Tritanomaly

64.4366, 0.3311, 0.3193

Monochromacy



Original Color

64.6795, 0.3383, 0.3334

Achromatopsia

65.8375, 0.3127, 0.3290

Achromatomaly

65.3706, 0.3217, 0.3301

CSS Examples

Text

The CSS property to change the color of the text to Yxy 64.6795, 0.3383, 0.3334 is called "color". The color property can be set on classes, ids or directly on the HTML element.

This example shows how text in the color `rgb(233, 204, 200)` looks like.

```
.text, #text, p{  
    color:rgb(233, 204, 200)  
}
```

If you want to add a text shadow in that color use the text-shadow property, you can generate a text shadow directly with our [CSS Text Shadow Generator](#).

Here you see how black text with a 4 pixel rgb(233, 204, 200) colored shadow looks like.

```
.shadow{ text-shadow: 4px 4px 2px rgb(233, 204, 200) }
```

Border

The CSS property to change the border of an element to Yxy 64.6795, 0.3383, 0.3334 is called "border". The border property can be set on classes, ids or directly on the HTML element.

This example shows the color as border, it can be applied via the CSS property "border" or "border-color".

```
.border, #border, table{ border:4px solid rgb(233, 204, 200) }
```

If only the border color should be changed use the property `border-color`.

```
.border{ border-color:rgb(233, 204, 200) }
```

If you want to add a box shadow in that color use:

Here you see how a box with a 4 pixel `rgb(233, 204, 200)` colored shadow looks like.

```
.boxshadow{ -moz-box-shadow:4px 4px 4px  
4px rgb(233, 204, 200); -webkit-box-  
shadow:4px 4px 4px 4px rgb(233, 204, 200);  
box-shadow:4px 4px 4px 4px rgb(233, 204,  
200) }
```


Background

The CSS property to change the background color of an element to Yxy 64.6795, 0.3383, 0.3334 is called "background". The background property can be set on classes, ids or directly on the HTML element.

```
.background, #background, body{  
background: rgb(233, 204, 200) }
```

If only the background color should be changed can be used:

```
.background{ background-color: rgb(233,  
204, 200) }
```

This example shows the color as background, it is applied via the CSS property "background".

To optimize and compress your CSS code, you can use our [online CSS compressor and optimizer](#) based on csstidy. If you want to create a linear or radial gradient as background or border, check our [CSS Gradient Generator](#).

Hey! You found this booklet interesting? Support Converting Colors with the new Membership Option!

The pro membership hides all ads, plus gives you double the colors in the color bucket, and more awesome pro features!

[Learn more, Memberships starting at \\$2.50/m!](#)

**Follow me
on Twitter!**

@ConvertingColor