

# Converting Colors

Yxy(64.5804, 0.3350, 0.3342)

Have a look what the booklet for  
Yxy(64.5804, 0.3350, 0.3342)  
contains.

<b>Yxy(64.4908, 0.3350, 0.3346)</b> .....	3
<b>Conversions</b> .....	4
<b>Details</b> .....	6
<b>Harmonies</b> .....	12
<b>Previews</b> .....	24
<b>Color Blindness Simulation</b> .....	27
<b>CSS Examples</b> .....	30

# Color

**Yxy(64.4908, 0.3350, 0.3346)**

# Conversions

## Conversions Part 1

<b>Format</b>	<b>Color</b>
Hex	E5CDC8
RGB	229, 205, 200
RGB Percent	90%, 80%, 78%
CMY	0.1020, 0.1960, 0.2157
CMYK	0.00, 0.10, 0.13, 0.10
HSL	10°, 36%, 84%
HSV	10°, 13%, 90%
XYZ	64.5679, 64.4908, 63.6813
YIQ	211.6060, 15.9090, 3.5330

# Conversions

## Conversions Part 2

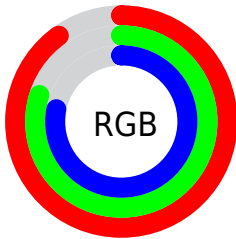
Format	Color
R <sub>Y</sub> B	229, 206, 200
Decimal	15060424
CIE Lab	84.22, 7.55, 5.54
CIE LCh	84, 9.365, 36.256
Yxy	64.4908, 0.3350, 0.3346
Android (android.graphics.Color)	4293250504 (0xFFE5CDC8)
YUV	211.6060, -5.7218, 15.2545
Hunter-Lab	80.3062, 2.9821, 9.1984

# Details

The Yxy color **64.4908, 0.3350, 0.3346** is a light color, and the websafe version is hex **CCCCCC**. A complement of this color would be **71.2353, 0.2933, 0.3233**, and the grayscale version is **65.5950, 0.3127, 0.3290**.

A 20% lighter version of the original color is **100.0000, 0.3127, 0.3290**, and **33.0928, 0.3403, 0.3363** is the 20% darker color. If you saturate the color by 10%, you get **54.9826, 0.3569, 0.3394**, and if you desaturate by 10%, it is **75.2618, 0.3170, 0.3301**.

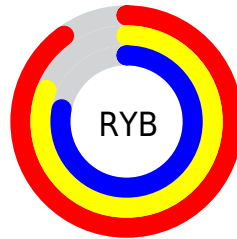
# Distribution



Red (90%)

Green (80%)

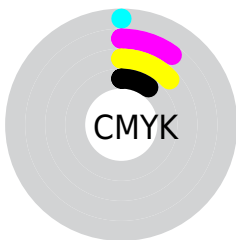
Blue (78%)



Red (90%)

Yellow (81%)

Blue (78%)

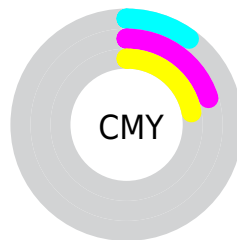


Cyan (0%)

Magenta (10%)

Yellow (13%)

Black (10%)



Cyan (10%)

Magenta (20%)


Yellow (22%)


# Brightness & Saturation Gradients

These gradients show how the Yxy color 64.4908, 0.3350, 0.3346 changes by changing the brightness by 10 percent. The first figure shows a shift by +10% for each color and the second figure -10%.


Similar to the brightness gradients but the following saturation gradients show a change of the Yxy color 64.4908, 0.3350, 0.3346 by changing the saturation by 10% instead.




 64.4908, 0.3350,  
0.3346

 64.4908, 0.3350,  
0.3346


440.9599, 0.3244,  
0.3321

 47.0483, 0.3375,  
0.3352


111.3175, 0.3313,  
0.3337

 33.0738, 0.3406,  
0.3359


141.4704, 0.3298,  
0.3334

 22.1830, 0.3446,  
0.3368


176.6290, 0.3286,  
0.3331

 13.9914, 0.3500,  
0.3379

217.1776, 0.3275,  
0.3328

 8.1147, 0.3575,  
0.3394

263.5006, 0.3266,  
0.3326

 4.1684, 0.3689,  
0.3415

315.9823, 0.3258,

 1.7682, 0.3878,

0.3324

375.0073, 0.3251,  
0.3322

0.3445

0.4673, 0.5163,  
0.3839

0.0000, 0.0000,  
0.0000

64.4908, 0.3350,  
0.3346

64.4908, 0.3350,  
0.3346

54.9826, 0.3569,  
0.3394

75.2618, 0.3170,  
0.3301

46.6825, 0.3835,  
0.3442

87.3306, 0.3021,  
0.3260

39.5445, 0.4152,  
0.3490

95.3976, 0.2970,  
0.3290

33.5163, 0.4521,  
0.3530

■ 28.5415, 0.4933,  
0.3557

■ 24.5588, 0.5361,  
0.3561

■ 21.5005, 0.5761,  
0.3535

■ 19.2896, 0.6077,  
0.3478

■ 18.1493, 0.6241,  
0.3426

# Harmonies

## Analogous

The Analogous color harmony consists of three colors that are next to each other on the color wheel.



64.4908, 0.3287, 0.3244



64.4908, 0.3350, 0.3346



64.4908, 0.3352, 0.3436

# Triad

The Triadic color harmony groups three colors that are evenly spaced from another and form a triangle on the color wheel.



64.4908, 0.3350, 0.3346



64.4908, 0.3071, 0.3432



64.4908, 0.2962, 0.3094

# Complementary

The Complementary color scheme is a pair of colors which are on the opposite of each other on the color wheel.



64.4908, 0.3350, 0.3346



71.2353, 0.2933, 0.3233

# Split Complementary

Split-complementary colors differ from the complementary color scheme. The scheme consists of three colors, the original color and two neighbors of the complement color.



64.4908, 0.2907, 0.3140



64.4908, 0.3350, 0.3346



64.4908, 0.2969, 0.3335

# Square

The Square scheme is like the rectangle color scheme, but the four colors are evenly spaced on the color wheel.



64.4908, 0.3350, 0.3346



64.4908, 0.3190, 0.3488



64.4908, 0.2910, 0.3227



64.4908, 0.3062, 0.3100



# Rectangle

The Rectangle color scheme consists of four colors that form a rectangle on the color wheel.



64.4908, 0.3350, 0.3346



64.4908, 0.3319, 0.3477



64.4908, 0.2910, 0.3227



64.4908, 0.2938, 0.3104

# Sweetspot

The Sweet Spot groups the original color and five complimentary colors.



64.4937, 0.3350, 0.3346



94.0958, 0.3192, 0.3307



63.3521, 0.3177, 0.3029



19.9091, 0.3205, 0.3311



0.0000, 0.0000, 0.0000



21.4041, 0.3127, 0.3290

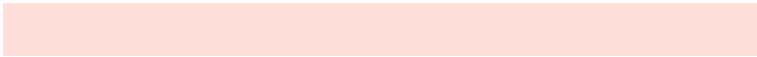


# Same Dimension

The Same Dimension uses a secret algorithm to generate beautiful new colors.



64.4937, 0.3350, 0.3346



79.2283, 0.3399, 0.3357



71.6618, 0.3330, 0.3501



14.7689, 0.3288, 0.3331



10.4979, 0.6220, 0.3443



0.8953, 0.5958, 0.3651

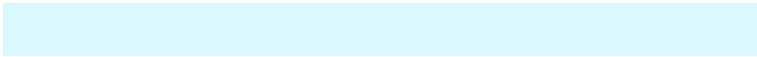


# Inverse Universe

The Inverse Universe completely reimagines the original color for something new.



71.2353, 0.2933, 0.3233



89.3041, 0.2896, 0.3222



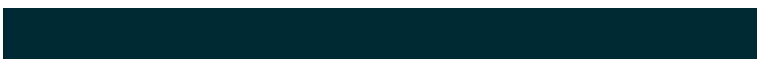
63.8600, 0.2929, 0.3070



15.8898, 0.2981, 0.3248



24.2958, 0.2092, 0.2730

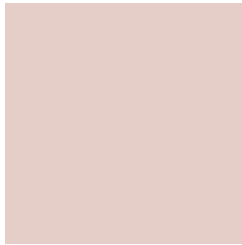


1.9076, 0.2117, 0.2820



# Previews

## White Background



This preview shows how the Yxy color 64.4908, 0.3350, 0.3346 looks on a white background.

## Color Contrast Check

Large Text (above 18pt) WCAG AA × Fail

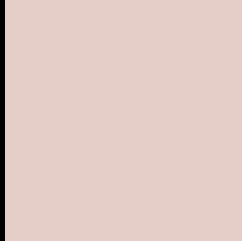
Any Text WCAG AA × Fail

Large Text (above 18pt) WCAG AAA × Fail

Any Text WCAG AAA × Fail



# Black Background



This preview shows how the Yxy color 64.4908, 0.3350, 0.3346 looks on a black background.

## Color Contrast Check

Large Text (above 18pt) WCAG AA ✓ Pass

Any Text WCAG AA ✓ Pass

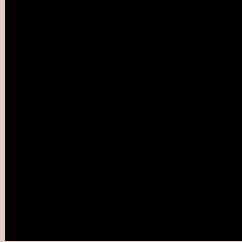
Large Text (above 18pt) WCAG AAA ✓ Pass

Any Text WCAG AAA ✓ Pass

If you want to check with other color combinations, try the [Color Contrast Checker](#).

**Yxy 64.4908, 0.3350, 0.3346**

## Background



This preview shows how black text looks on a background with the Yxy color 64.4908, 0.3350, 0.3346.

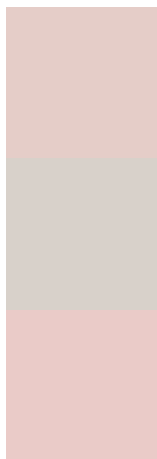


This preview shows how white text looks on a background with the Yxy color 64.4908, 0.3350, 0.3346.

# Color Blindness Simulation

Color vision deficiency is a very complex topic, and I could not describe the different causes any better than Wikipedia does, so if you want to learn more, you should check out their [article about color blindness](#).

## Dichromacy



### Original Color

64.4908, 0.3350, 0.3346

### Protanopia

64.4641, 0.3229, 0.3370

### Deuteranopia

64.3744, 0.3393, 0.3324



## Tritanopia

64.2919, 0.3235, 0.3117

# Trichromacy



## Original Color

64.4908, 0.3350, 0.3346

## Protanomaly

64.7009, 0.3276, 0.3369

## Deuteranomaly

64.5117, 0.3375, 0.3335

## Tritanomaly

64.2380, 0.3278, 0.3203

# Monochromacy



## Original Color

64.4908, 0.3350, 0.3346

## Achromatopsia

65.8375, 0.3127, 0.3290

## Achromatomaly

65.0604, 0.3202, 0.3301

# CSS Examples

## Text

The CSS property to change the color of the text to Yxy 64.4908, 0.3350, 0.3346 is called "color". The color property can be set on classes, ids or directly on the HTML element.

This example shows how text in the color `rgb(229, 205, 200)` looks like.

```
.text, #text, p{  
    color:rgb(229, 205, 200)  
}
```

If you want to add a text shadow in that color use the text-shadow property, you can generate a text shadow directly with our [CSS Text Shadow Generator](#).

Here you see how black text with a 4 pixel rgb(229, 205, 200) colored shadow looks like.

```
.shadow{ text-shadow: 4px 4px 2px rgb(229, 205, 200) }
```

## Border

The CSS property to change the border of an element to Yxy 64.4908, 0.3350, 0.3346 is called "border". The border property can be set on classes, ids or directly on the HTML element.

This example shows the color as border, it can be applied via the CSS property "border" or "border-color".

```
.border, #border, table{ border:4px solid rgb(229, 205, 200) }
```

If only the border color should be changed use the property `border-color`.

```
.border{ border-color:rgb(229, 205, 200) }
```

If you want to add a box shadow in that color use:

Here you see how a box with a 4 pixel `rgb(229, 205, 200)` colored shadow looks like.

```
.boxshadow{ -moz-box-shadow:4px 4px 4px  
4px rgb(229, 205, 200); -webkit-box-  
shadow:4px 4px 4px 4px rgb(229, 205, 200);  
box-shadow:4px 4px 4px 4px rgb(229, 205,  
200) }
```



# Background

The CSS property to change the background color of an element to Yxy 64.4908, 0.3350, 0.3346 is called "background". The background property can be set on classes, ids or directly on the HTML element.

```
.background, #background, body{  
background: rgb(229, 205, 200) }
```

If only the background color should be changed can be used:

```
.background{ background-color: rgb(229,  
205, 200) }
```

This example shows the color as background, it is applied via the CSS property "background".

To optimize and compress your CSS code, you can use our [online CSS compressor and optimizer](#) based on csstidy. If you want to create a linear or radial gradient as background or border, check our [CSS Gradient Generator](#).

Hey! You found this booklet interesting? Support Converting Colors with the new Membership Option!

The pro membership hides all ads, plus gives you double the colors in the color bucket, and more awesome pro features!

**[Learn more, Memberships starting at \\$2.50/m!](#)**

**Follow me  
on Twitter!**

@ConvertingColor