

Converting Colors

$Yxy(64.7670, 0.3311, 0.3412)$

Have a look what the booklet for
Yxy(64.7670, 0.3311, 0.3412)
contains.

Yxy(64.6726, 0.3313, 0.3414)	3
Conversions	4
Details	6
Harmonies	12
Previews	24
Color Blindness Simulation	27
CSS Examples	30

Color

Yxy(64.6726, 0.3313, 0.3414)

Conversions

Conversions Part 1

Format	Color
Hex	DED0C5
RGB	222, 208, 197
RGB Percent	87%, 82%, 77%
CMY	0.1294, 0.1843, 0.2274
CMYK	0.00, 0.06, 0.11, 0.13
HSL	26°, 27%, 82%
HSV	26°, 11%, 87%
XYZ	62.7593, 64.6726, 62.0016
YIQ	210.9320, 11.8750, -0.4530

Conversions

Conversions Part 2

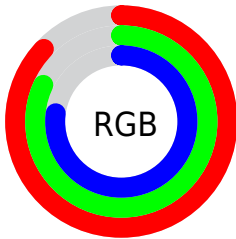
Format	Color
R _Y B	222, 217, 197
Decimal	14602437
CIE Lab	84.31, 3.00, 7.18
CIE LCh	84, 7.787, 67.311
Yxy	64.6726, 0.3313, 0.3414
Android (android.graphics.Color)	4292792517 (0xFFDED0C5)
YUV	210.9320, -6.8685, 9.7066
Hunter-Lab	80.4193, -1.4321, 10.5821

Details

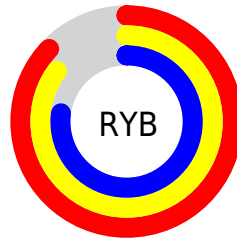
The Yxy color **64.6726, 0.3313, 0.3414** is a light color, and the websafe version is hex **CCCCCC**. A complement of this color would be **63.7372, 0.2953, 0.3163**, and the grayscale version is **65.1366, 0.3127, 0.3290**.

A 20% lighter version of the original color is **99.9358, 0.3133, 0.3300**, and **33.3099, 0.3364, 0.3453** is the 20% darker color. If you saturate the color by 10%, you get **57.9041, 0.3505, 0.3531**, and if you desaturate by 10%, it is **72.0720, 0.3146, 0.3303**.

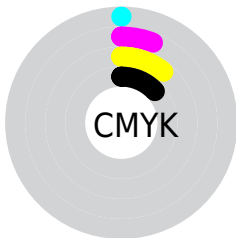
Distribution



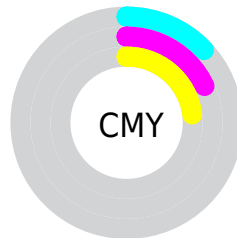
- Red (87%)
- Green (82%)
- Blue (77%)



- Red (87%)
- Yellow (85%)
- Blue (77%)



- Cyan (0%)
- Magenta (6%)
- Yellow (11%)
- Black (13%)



- Cyan (13%)
- Magenta (18%)
- Yellow (23%)

Brightness & Saturation Gradients

These gradients show how the Yxy color 64.6726, 0.3313, 0.3414 changes by changing the brightness by 10 percent. The first figure shows a shift by +10% for each color and the second figure -10%.

Similar to the brightness gradients but the following saturation gradients show a change of the Yxy color 64.6726, 0.3313, 0.3414 by changing the saturation by 10% instead.

■ 64.6726, 0.3313,
0.3414

■ 64.6726, 0.3313,
0.3414

441.6145, 0.3225,
0.3356

■ 47.1957, 0.3334,
0.3427

111.5790, 0.3282,
0.3394

■ 33.1904, 0.3360,
0.3444

141.7773, 0.3270,
0.3386

■ 22.2723, 0.3393,
0.3466

176.9848, 0.3260,
0.3379

■ 14.0571, 0.3437,
0.3494

217.5859, 0.3251,
0.3373

■ 8.1604, 0.3499,
0.3533

263.9650, 0.3243,
0.3368

■ 4.1978, 0.3592,
0.3590

316.5066, 0.3236,

■ 1.7848, 0.3746,

0.3364

0.3682

375.5949, 0.3230,
0.3360

■ 0.4777, 0.5156,
0.4670

■ 0.0000, 0.0000,
0.0000

■ 64.6726, 0.3313,
0.3414

■ 64.6726, 0.3313,
0.3414

■ 57.9041, 0.3505,
0.3531

■ 72.0720, 0.3146,
0.3303

■ 51.7406, 0.3726,
0.3651

■ 80.1103, 0.3003,
0.3200

■ 46.1667, 0.3976,
0.3770

■ 88.2395, 0.2926,
0.3191

■ 41.1632, 0.4253,
0.3880

■ 94.2702, 0.2929,
0.3289

■ 36.7095, 0.4550,
0.3971

■ 32.7837, 0.4855,
0.4030

■ 29.3618, 0.5149,
0.4045

■ 26.4171, 0.5409,
0.4006

■ 24.2037, 0.5602,
0.3934

Harmonies

Analogous

The Analogous color harmony consists of three colors that are next to each other on the color wheel.



64.6726, 0.3313, 0.3340



64.6726, 0.3313, 0.3414



64.6726, 0.3263, 0.3456

Triad

The Triadic color harmony groups three colors that are evenly spaced from another and form a triangle on the color wheel.



64.6726, 0.3313, 0.3414



64.6726, 0.2993, 0.3324



64.6726, 0.3076, 0.3133

Complementary

The Complementary color scheme is a pair of colors which are on the opposite of each other on the color wheel.



64.6726, 0.3313, 0.3414



63.7372, 0.2953, 0.3163

Split Complementary

Split-complementary colors differ from the complementary color scheme. The scheme consists of three colors, the original color and two neighbors of the complement color.



64.6726, 0.2992, 0.3127



64.6726, 0.3313, 0.3414



64.6726, 0.2945, 0.3236

Square

The Square scheme is like the rectangle color scheme, but the four colors are evenly spaced on the color wheel.



64.6726, 0.3313, 0.3414



64.6726, 0.3078, 0.3405



64.6726, 0.2945, 0.3164



64.6726, 0.3175, 0.3179

Rectangle

The Rectangle color scheme consists of four colors that form a rectangle on the color wheel.



64.6726, 0.3313, 0.3414



64.6726, 0.3208, 0.3460



64.6726, 0.2945, 0.3164



64.6726, 0.3045, 0.3126

Sweetspot

The Sweet Spot groups the original color and five complimentary colors.



64.6755, 0.3313, 0.3414



96.8138, 0.3174, 0.3322



60.1775, 0.3220, 0.3132



20.5428, 0.3187, 0.3331



0.0000, 0.0000, 0.0000



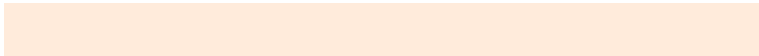
21.4041, 0.3127, 0.3290

Same Dimension

The Same Dimension uses a secret algorithm to generate beautiful new colors.



64.6755, 0.3313, 0.3414



85.8103, 0.3365, 0.3447



70.9256, 0.3297, 0.3549



14.6879, 0.3281, 0.3394



14.5892, 0.5577, 0.3954



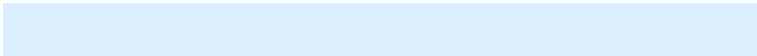
1.1874, 0.5311, 0.4165

Inverse Universe

The Inverse Universe completely reimagines the original color for something new.



63.7372, 0.2953, 0.3163



84.2320, 0.2908, 0.3128



57.8419, 0.2951, 0.3017



14.5104, 0.2981, 0.3184



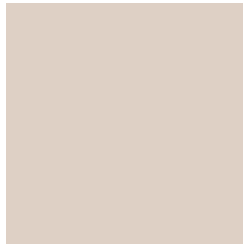
11.9698, 0.1830, 0.1788



1.0072, 0.1900, 0.2041

Previews

White Background



This preview shows how the Yxy color 64.6726, 0.3313, 0.3414 looks on a white background.

Color Contrast Check

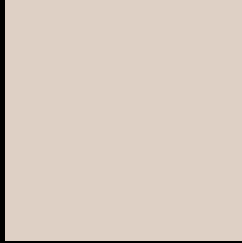
Large Text (above 18pt) WCAG AA × Fail

Any Text WCAG AA × Fail

Large Text (above 18pt) WCAG AAA × Fail

Any Text WCAG AAA × Fail

Black Background



This preview shows how the Yxy color 64.6726, 0.3313, 0.3414 looks on a black background.

Color Contrast Check

Large Text (above 18pt) WCAG AA ✓ Pass

Any Text WCAG AA ✓ Pass

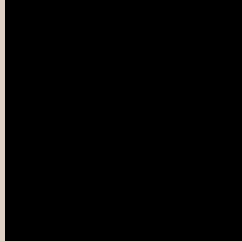
Large Text (above 18pt) WCAG AAA ✓ Pass

Any Text WCAG AAA ✓ Pass

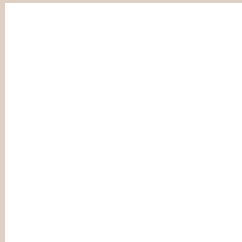
If you want to check with other color combinations, try the [Color Contrast Checker](#).

Yxy 64.6726, 0.3313, 0.3414

Background



This preview shows how black text looks on a background with the Yxy color 64.6726, 0.3313, 0.3414.

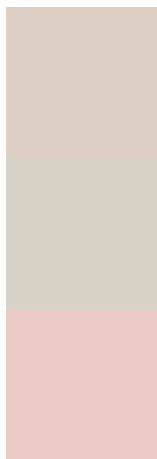


This preview shows how white text looks on a background with the Yxy color 64.6726, 0.3313, 0.3414.

Color Blindness Simulation

Color vision deficiency is a very complex topic, and I could not describe the different causes any better than Wikipedia does, so if you want to learn more, you should check out their [article about color blindness](#).

Dichromacy



Original Color

64.6726, 0.3313, 0.3414

Protanopia

64.9221, 0.3265, 0.3426

Deuteranopia

64.4513, 0.3416, 0.3345



Tritanopia

64.4137, 0.3166, 0.3104

Trichromacy



Original Color

64.6726, 0.3313, 0.3414

Protanomaly

64.7382, 0.3281, 0.3415

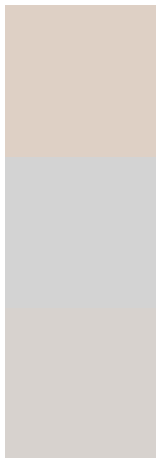
Deuteranomaly

64.5629, 0.3373, 0.3368

Tritanomaly

64.2634, 0.3223, 0.3213

Monochromacy



Original Color

64.6726, 0.3313, 0.3414

Achromatopsia

65.1406, 0.3127, 0.3290

Achromatomaly

64.9965, 0.3193, 0.3335

CSS Examples

Text

The CSS property to change the color of the text to Yxy 64.6726, 0.3313, 0.3414 is called "color". The color property can be set on classes, ids or directly on the HTML element.

This example shows how text in the color `rgb(222, 208, 197)` looks like.

```
.text, #text, p{  
    color:rgb(222, 208, 197)  
}
```

If you want to add a text shadow in that color use the text-shadow property, you can generate a text shadow directly with our [CSS Text Shadow Generator](#).

Here you see how black text with a 4 pixel rgb(222, 208, 197) colored shadow looks like.

```
.shadow{ text-shadow: 4px 4px 2px rgb(222, 208, 197) }
```

Border

The CSS property to change the border of an element to Yxy 64.6726, 0.3313, 0.3414 is called "border". The border property can be set on classes, ids or directly on the HTML element.

This example shows the color as border, it can be applied via the CSS property "border" or "border-color".

```
.border, #border, table{ border:4px solid rgb(222, 208, 197) }
```

If only the border color should be changed use the property border-color.

```
.border{ border-color:rgb(222, 208, 197) }
```

If you want to add a box shadow in that color use:

Here you see how a box with a 4 pixel rgb(222, 208, 197) colored shadow looks like.

```
.boxshadow{ -moz-box-shadow:4px 4px 4px  
4px rgb(222, 208, 197); -webkit-box-  
shadow:4px 4px 4px 4px rgb(222, 208, 197);  
box-shadow:4px 4px 4px 4px rgb(222, 208,  
197) }
```


Background

The CSS property to change the background color of an element to Yxy 64.6726, 0.3313, 0.3414 is called "background". The background property can be set on classes, ids or directly on the HTML element.

```
.background, #background, body{  
background: rgb(222, 208, 197) }
```

If only the background color should be changed can be used:

```
.background{ background-color: rgb(222,  
208, 197) }
```

This example shows the color as background, it is applied via the CSS property "background".

To optimize and compress your CSS code, you can use our [online CSS compressor and optimizer](#) based on csstidy. If you want to create a linear or radial gradient as background or border, check our [CSS Gradient Generator](#).

Hey! You found this booklet interesting? Support Converting Colors with the new Membership Option!

The pro membership hides all ads, plus gives you double the colors in the color bucket, and more awesome pro features!

[Learn more, Memberships starting at \\$2.50/m!](#)

**Follow me
on Twitter!**

@ConvertingColor