

Converting Colors

$Y_{xy}(64.7724, 0.3535, 0.3519)$

Have a look what the booklet for
Yxy(64.7724, 0.3535, 0.3519)
contains.

Yxy(64.4793, 0.3530, 0.3510)	3
Conversions	4
Details	6
Harmonies	12
Previews	24
Color Blindness Simulation	27
CSS Examples	30

Color

Yxy(64.4793, 0.3530, 0.3510)

Conversions

Conversions Part 1

Format	Color
Hex	ECCCB8
RGB	236, 204, 184
RGB Percent	93%, 80%, 72%
CMY	0.0743, 0.2000, 0.2784
CMYK	0.00, 0.14, 0.22, 0.07
HSL	23°, 58%, 82%
HSV	23°, 22%, 93%
XYZ	64.8467, 64.4793, 54.3757
YIQ	211.2880, 25.4920, 0.5640

Conversions

Conversions Part 2

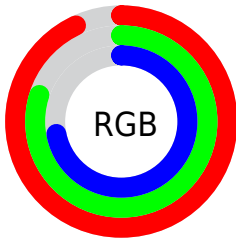
Format	Color
R_{YB}	236, 217, 184
Decimal	15518904
CIE _{Lab}	84.21, 8.21, 14.11
CIE _{LCh}	84, 16.323, 59.804
Yxy	64.4793, 0.3530, 0.3510
Android (android.graphics.Color)	4293708984 (0xFFECCCB8)
YUV	211.2880, -13.4530, 21.6724
Hunter-Lab	80.2990, 3.6272, 16.0602

Details

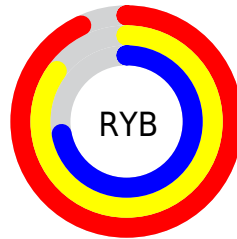
The Yxy color **64.4793, 0.3530, 0.3510** is a light color, and the websafe version is hex **FFCCCC**. A complement of this color would be **65.3875, 0.2783, 0.3059**, and the grayscale version is **65.4239, 0.3127, 0.3290**.

A 20% lighter version of the original color is **99.0713, 0.3214, 0.3434**, and **33.1547, 0.3634, 0.3562** is the 20% darker color. If you saturate the color by 10%, you get **56.9827, 0.3762, 0.3616**, and if you desaturate by 10%, it is **72.7920, 0.3330, 0.3407**.

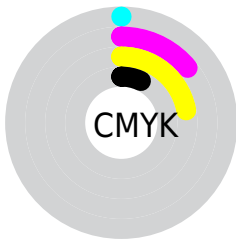
Distribution



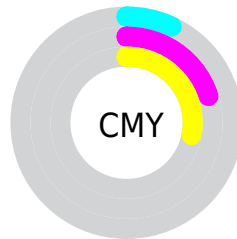
- Red (93%)
- Green (80%)
- Blue (72%)



- Red (93%)
- Yellow (85%)
- Blue (72%)



- Cyan (0%)
- Magenta (14%)
- Yellow (22%)
- Black (7%)




- Cyan (7%)
- Magenta (20%)
- Yellow (28%)

Brightness & Saturation Gradients


These gradients show how the Yxy color 64.4793, 0.3530, 0.3510 changes by changing the brightness by 10 percent. The first figure shows a shift by +10% for each color and the second figure -10%.

Similar to the brightness gradients but the following saturation gradients show a change of the Yxy color 64.4793, 0.3530, 0.3510 by changing the saturation by 10% instead.

 64.4793, 0.3530,
0.3510

 64.4793, 0.3530,
0.3510

440.9184, 0.3338,
0.3409

 47.0390, 0.3575,
0.3533

 111.3009, 0.3462,
0.3475

 33.0665, 0.3631,
0.3561


141.4510, 0.3436,
0.3461

 22.1774, 0.3704,
0.3596


176.6065, 0.3414,
0.3450

 13.9873, 0.3800,
0.3642

217.1517, 0.3395,
0.3439

 8.1118, 0.3934,
0.3702

263.4712, 0.3378,
0.3430

 4.1666, 0.4133,
0.3785

315.9492, 0.3363,

 1.7672, 0.4472,

0.3422

0.3917

374.9701, 0.3350,
0.3415

0.4666, 0.5798,
0.4202

0.0000, 0.0000,
0.0000

64.4793, 0.3530,
0.3510

64.4793, 0.3530,
0.3510

56.9827, 0.3762,
0.3616

72.7920, 0.3330,
0.3407

50.2676, 0.4028,
0.3720

81.9365, 0.3159,
0.3309

44.3097, 0.4326,
0.3816

91.9391, 0.3013,
0.3218

39.0801, 0.4649,
0.3891

96.5799, 0.3012,
0.3290

■ 34.5475, 0.4982,
0.3934

■ 30.6781, 0.5302,
0.3933

■ 27.4341, 0.5582,
0.3878

■ 25.2653, 0.5767,
0.3803

Harmonies

Analogous

The Analogous color harmony consists of three colors that are next to each other on the color wheel.



64.4793, 0.3502, 0.3345



64.4793, 0.3530, 0.3510



64.4793, 0.3446, 0.3624

Triad

The Triadic color harmony groups three colors that are evenly spaced from another and form a triangle on the color wheel.



64.4793, 0.3530, 0.3510



64.4793, 0.2885, 0.3408



64.4793, 0.2970, 0.2955

Complementary

The Complementary color scheme is a pair of colors which are on the opposite of each other on the color wheel.



64.4793, 0.3530, 0.3510



65.3875, 0.2783, 0.3059

Split Complementary

Split-complementary colors differ from the complementary color scheme. The scheme consists of three colors, the original color and two neighbors of the complement color.



64.4793, 0.2813, 0.2961



64.4793, 0.3530, 0.3510



64.4793, 0.2766, 0.3216

Square

The Square scheme is like the rectangle color scheme, but the four colors are evenly spaced on the color wheel.



64.4793, 0.3530, 0.3510



64.4793, 0.3071, 0.3570



64.4793, 0.2740, 0.3053



64.4793, 0.3173, 0.3032

Rectangle

The Rectangle color scheme consists of four colors that form a rectangle on the color wheel.



64.4793, 0.3530, 0.3510



64.4793, 0.3340, 0.3652



64.4793, 0.2740, 0.3053



64.4793, 0.2910, 0.2947

Sweetspot

The Sweet Spot groups the original color and five complimentary colors.



64.4822, 0.3530, 0.3510



92.0885, 0.3241, 0.3357



57.0845, 0.3309, 0.2944



19.5697, 0.3251, 0.3363



0.0000, 0.0000, 0.0000



21.4041, 0.3127, 0.3290

Same Dimension

The Same Dimension uses a secret algorithm to generate beautiful new colors.



64.4822, 0.3530, 0.3510



73.0988, 0.3620, 0.3553



77.8775, 0.3473, 0.3780



16.0026, 0.3283, 0.3381



14.1533, 0.5738, 0.3826



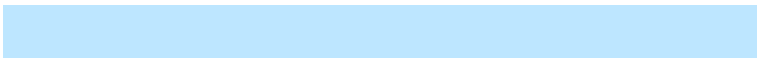
1.2925, 0.5481, 0.4030

Inverse Universe

The Inverse Universe completely reimagines the original color for something new.



65.3875, 0.2783, 0.3059



74.3345, 0.2719, 0.3011



53.1079, 0.2760, 0.2748



16.0937, 0.2981, 0.3197



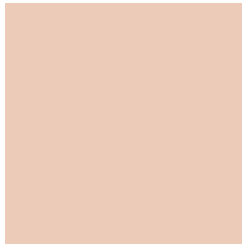
14.8178, 0.1884, 0.1982



1.3488, 0.1940, 0.2183

Previews

White Background



This preview shows how the Yxy color 64.4793, 0.3530, 0.3510 looks on a white background.

Color Contrast Check

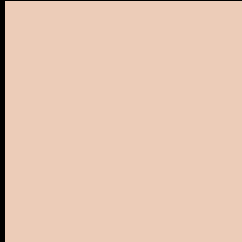
Large Text (above 18pt) WCAG AA × Fail

Any Text WCAG AA × Fail

Large Text (above 18pt) WCAG AAA × Fail

Any Text WCAG AAA × Fail

Black Background



This preview shows how the Yxy color 64.4793, 0.3530, 0.3510 looks on a black background.

Color Contrast Check

Large Text (above 18pt) WCAG AA ✓ Pass

Any Text WCAG AA ✓ Pass

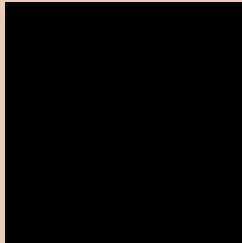
Large Text (above 18pt) WCAG AAA ✓ Pass

Any Text WCAG AAA ✓ Pass

If you want to check with other color combinations, try the [Color Contrast Checker](#).

Yxy 64.4793, 0.3530, 0.3510

Background



This preview shows how black text looks on a background with the Yxy color 64.4793, 0.3530, 0.3510.

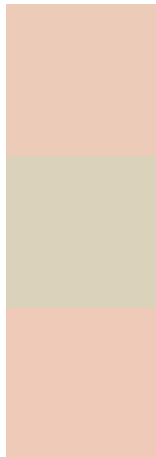


This preview shows how white text looks on a background with the Yxy color 64.4793, 0.3530, 0.3510.

Color Blindness Simulation

Color vision deficiency is a very complex topic, and I could not describe the different causes any better than Wikipedia does, so if you want to learn more, you should check out their [article about color blindness](#).

Dichromacy



Original Color

64.4793, 0.3530, 0.3510

Protanopia

64.7411, 0.3360, 0.3552

Deuteranopia

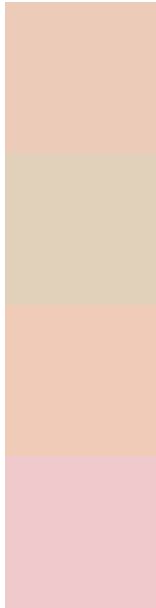
64.2270, 0.3567, 0.3487



Tritanopia

64.2784, 0.3332, 0.3121

Trichromacy



Original Color

64.4793, 0.3530, 0.3510

Protanomaly

64.6645, 0.3418, 0.3538

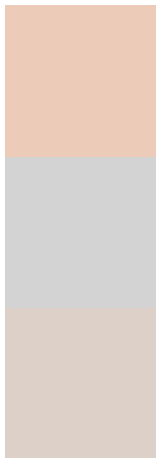
Deuteranomaly

64.5233, 0.3556, 0.3498

Tritanomaly

64.4836, 0.3405, 0.3259

Monochromacy



Original Color

64.4793, 0.3530, 0.3510

Achromatopsia

65.1406, 0.3127, 0.3290

Achromatomaly

64.5444, 0.3268, 0.3369

CSS Examples

Text

The CSS property to change the color of the text to Yxy 64.4793, 0.3530, 0.3510 is called "color". The color property can be set on classes, ids or directly on the HTML element.

This example shows how text in the color `rgb(236, 204, 184)` looks like.

```
.text, #text, p{  
    color:rgb(236, 204, 184)  
}
```

If you want to add a text shadow in that color use the text-shadow property, you can generate a text shadow directly with our [CSS Text Shadow Generator](#).

Here you see how black text with a 4 pixel rgb(236, 204, 184) colored shadow looks like.

```
.shadow{ text-shadow: 4px 4px 2px rgb(236, 204, 184) }
```

Border

The CSS property to change the border of an element to Yxy 64.4793, 0.3530, 0.3510 is called "border". The border property can be set on classes, ids or directly on the HTML element.

This example shows the color as border, it can be applied via the CSS property "border" or "border-color".

```
.border, #border, table{ border:4px solid rgb(236, 204, 184) }
```

If only the border color should be changed use the property `border-color`.

```
.border{ border-color:rgb(236, 204, 184) }
```

If you want to add a box shadow in that color use:

Here you see how a box with a 4 pixel `rgb(236, 204, 184)` colored shadow looks like.

```
.boxshadow{ -moz-box-shadow:4px 4px 4px  
4px rgb(236, 204, 184); -webkit-box-  
shadow:4px 4px 4px 4px rgb(236, 204, 184);  
box-shadow:4px 4px 4px 4px rgb(236, 204,  
184) }
```


Background

The CSS property to change the background color of an element to Yxy 64.4793, 0.3530, 0.3510 is called "background". The background property can be set on classes, ids or directly on the HTML element.

```
.background, #background, body{  
background: rgb(236, 204, 184) }
```

If only the background color should be changed can be used:

```
.background{ background-color: rgb(236,  
204, 184) }
```

This example shows the color as background, it is applied via the CSS property "background".

To optimize and compress your CSS code, you can use our [online CSS compressor and optimizer](#) based on csstidy. If you want to create a linear or radial gradient as background or border, check our [CSS Gradient Generator](#).

Hey! You found this booklet interesting? Support Converting Colors with the new Membership Option!

The pro membership hides all ads, plus gives you double the colors in the color bucket, and more awesome pro features!

[Learn more, Memberships starting at \\$2.50/m!](#)

**Follow me
on Twitter!**

@ConvertingColor