

# Converting Colors

Yxy(64.9137, 0.3455, 0.3449)

Have a look what the booklet for  
Yxy(64.9137, 0.3455, 0.3449)  
contains.

<b>Yxy(64.9167, 0.3458, 0.3444)</b> .....	3
<b><i>Conversions</i></b> .....	4
<b><i>Details</i></b> .....	6
<b><i>Harmonies</i></b> .....	12
<b><i>Previews</i></b> .....	24
<b><i>Color Blindness Simulation</i></b> .....	27
<b><i>CSS Examples</i></b> .....	30

# Color

**Yxy(64.9167, 0.3458, 0.3444)**

# Conversions

## Conversions Part 1

Format	Color
Hex	EACDBF
RGB	234, 205, 191
RGB Percent	92%, 80%, 75%
CMY	0.0822, 0.1961, 0.2509
CMYK	0.00, 0.12, 0.18, 0.08
HSL	19°, 51%, 83%
HSV	19°, 18%, 92%
XYZ	65.1806, 64.9167, 58.3949
YIQ	212.0750, 21.7780, 1.7940

# Conversions

## Conversions Part 2

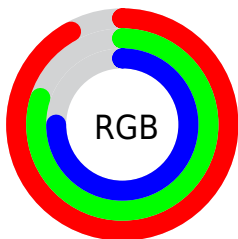
Format	Color
<a href="#">RYB</a>	<a href="#">234, 212, 191</a>
Decimal	<a href="#">15388095</a>
CIELab	<a href="#">84.44, 7.99, 10.68</a>
CIELCh	<a href="#">84, 13.338, 53.204</a>
Yxy	<a href="#">64.9167, 0.3458, 0.3444</a>
Android (android.graphics.Color)	<a href="#">4293578175</a> ( <a href="#">0xFFEACDBF</a> )
YUV	<a href="#">212.0750, -10.3900, 19.2282</a>
Hunter-Lab	<a href="#">80.5709, 3.4046, 13.4284</a>

# Details

The Yxy color **64.9167, 0.3458, 0.3444** is a light color, and the websafe version is hex **FFCCCC**. A complement of this color would be **68.2517, 0.2842, 0.3131**, and the grayscale version is **65.9559, 0.3127, 0.3290**.

A 20% lighter version of the original color is **99.4954, 0.3173, 0.3367**, and **33.4332, 0.3538, 0.3477** is the 20% darker color. If you saturate the color by 10%, you get **56.7859, 0.3685, 0.3534**, and if you desaturate by 10%, it is **73.9821, 0.3265, 0.3358**.

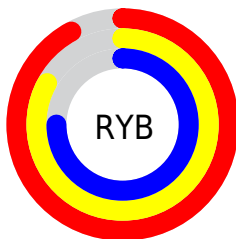
# Distribution



Red (92%)

Green (80%)

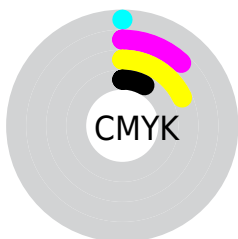
Blue (75%)



Red (92%)

Yellow (83%)

Blue (75%)

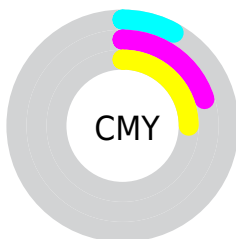


Cyan (0%)

Magenta (12%)

Yellow (18%)

Black (8%)



Cyan (8%)

Magenta (20%)


Yellow (25%)


# Brightness & Saturation Gradients

These gradients show how the Yxy color 64.9167, 0.3458, 0.3444 changes by changing the brightness by 10 percent. The first figure shows a shift by +10% for each color and the second figure -10%.


Similar to the brightness gradients but the following saturation gradients show a change of the Yxy color 64.9167, 0.3458, 0.3444 by changing the saturation by 10% instead.




 64.9167, 0.3458,  
0.3444

 64.9167, 0.3458,  
0.3444

442.4926, 0.3301,  
0.3373

 47.3935, 0.3495,  
0.3460


 111.9301, 0.3403,  
0.3420

 33.3469, 0.3541,  
0.3480


142.1891, 0.3381,  
0.3410

 22.3923, 0.3601,  
0.3504


177.4622, 0.3363,  
0.3402

 14.1454, 0.3680,  
0.3536

218.1338, 0.3347,  
0.3395

 8.2219, 0.3791,  
0.3579

264.5882, 0.3333,  
0.3388

 4.2373, 0.3956,  
0.3638

317.2099, 0.3321,

 1.8071, 0.4227,

0.3383

376.3832, 0.3310,  
0.3378

0.3724

0.4916, 0.5740,  
0.4260

0.0000, 0.0000,  
0.0000

64.9167, 0.3458,  
0.3444

64.9167, 0.3458,  
0.3444

56.7859, 0.3685,  
0.3534

73.9821, 0.3265,  
0.3358

49.5506, 0.3950,  
0.3623

84.0022, 0.3103,  
0.3277

43.1816, 0.4253,  
0.3707

94.5995, 0.3000,  
0.3264

37.6448, 0.4591,  
0.3777

96.2409, 0.3000,  
0.3290

■ 32.9036, 0.4951,  
0.3821

■ 28.9185, 0.5308,  
0.3825

■ 25.6456, 0.5630,  
0.3782

■ 23.0328, 0.5888,  
0.3692

■ 22.6661, 0.5926,  
0.3677

# Harmonies

## Analogous

The Analogous color harmony consists of three colors that are next to each other on the color wheel.



64.9167, 0.3415, 0.3304



64.9167, 0.3458, 0.3444



64.9167, 0.3409, 0.3548

# Triad

The Triadic color harmony groups three colors that are evenly spaced from another and form a triangle on the color wheel.



64.9167, 0.3458, 0.3444



64.9167, 0.2960, 0.3419



64.9167, 0.2966, 0.3010

# Complementary

The Complementary color scheme is a pair of colors which are on the opposite of each other on the color wheel.



64.9167, 0.3458, 0.3444



68.2517, 0.2842, 0.3131

# Split Complementary

Split-complementary colors differ from the complementary color scheme. The scheme consists of three colors, the original color and two neighbors of the complement color.



64.9167, 0.2850, 0.3032



64.9167, 0.3458, 0.3444



64.9167, 0.2847, 0.3265

# Square

The Square scheme is like the rectangle color scheme, but the four colors are evenly spaced on the color wheel.



64.9167, 0.3458, 0.3444



64.9167, 0.3120, 0.3538



64.9167, 0.2807, 0.3123



64.9167, 0.3128, 0.3059



# Rectangle

The Rectangle color scheme consists of four colors that form a rectangle on the color wheel.



64.9167, 0.3458, 0.3444



64.9167, 0.3332, 0.3581



64.9167, 0.2807, 0.3123



64.9167, 0.2921, 0.3009

# Sweetspot

The Sweet Spot groups the original color and five complimentary colors.



64.9196, 0.3458, 0.3444



92.6366, 0.3225, 0.3338



59.9605, 0.3251, 0.2974



19.6620, 0.3236, 0.3344



0.0000, 0.0000, 0.0000



21.4041, 0.3127, 0.3290



# Same Dimension

The Same Dimension uses a secret algorithm to generate beautiful new colors.



64.9196, 0.3458, 0.3444



75.0613, 0.3538, 0.3477



75.7437, 0.3418, 0.3667



15.8524, 0.3285, 0.3367



12.9340, 0.5898, 0.3699



1.1847, 0.5628, 0.3913

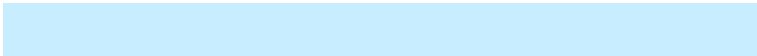


# Inverse Universe

The Inverse Universe completely reimagines the original color for something new.



68.2517, 0.2842, 0.3131



79.7952, 0.2785, 0.3095



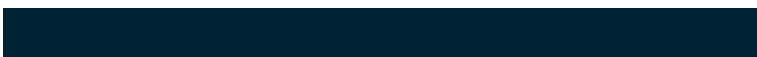
57.8266, 0.2829, 0.2882



16.2498, 0.2981, 0.3212



17.3265, 0.1943, 0.2195

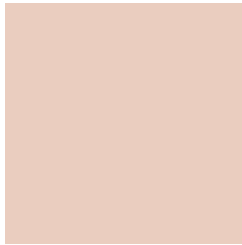


1.5341, 0.1990, 0.2364



# Previews

## White Background



This preview shows how the Yxy color 64.9167, 0.3458, 0.3444 looks on a white background.

## Color Contrast Check

Large Text (above 18pt) WCAG AA × Fail

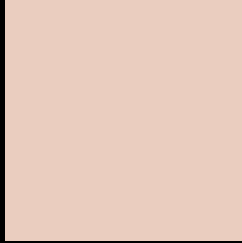
Any Text WCAG AA × Fail

Large Text (above 18pt) WCAG AAA × Fail

Any Text WCAG AAA × Fail



# Black Background



This preview shows how the Yxy color 64.9167, 0.3458, 0.3444 looks on a black background.

## Color Contrast Check

Large Text (above 18pt) WCAG AA ✓ Pass

Any Text WCAG AA ✓ Pass

Large Text (above 18pt) WCAG AAA ✓ Pass

Any Text WCAG AAA ✓ Pass

If you want to check with other color combinations, try the [Color Contrast Checker](#).

**Yxy 64.9167, 0.3458, 0.3444**

## Background



This preview shows how black text looks on a background with the Yxy color 64.9167, 0.3458, 0.3444.



This preview shows how white text looks on a background with the Yxy color 64.9167, 0.3458, 0.3444.

# Color Blindness Simulation

Color vision deficiency is a very complex topic, and I could not describe the different causes any better than Wikipedia does, so if you want to learn more, you should check out their [article about color blindness](#).

## Dichromacy



### Original Color

64.9167, 0.3458, 0.3444

### Protanopia

65.0483, 0.3309, 0.3472

### Deuteranopia

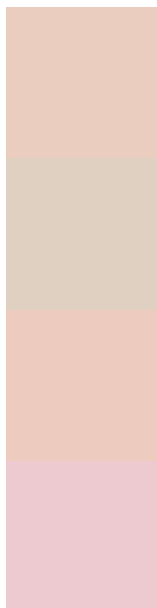
64.6506, 0.3494, 0.3421



## Tritanopia

64.7876, 0.3291, 0.3120

# Trichromacy



## Original Color

64.9167, 0.3458, 0.3444

## Protanomaly

64.8093, 0.3358, 0.3459

## Deuteranomaly

64.9518, 0.3484, 0.3432

## Tritanomaly

64.6280, 0.3349, 0.3226

# Monochromacy



## Original Color

64.9167, 0.3458, 0.3444

## Achromatopsia

65.8375, 0.3127, 0.3290

## Achromatomaly

65.1762, 0.3246, 0.3346

# CSS Examples

## Text

The CSS property to change the color of the text to Yxy 64.9167, 0.3458, 0.3444 is called "color". The color property can be set on classes, ids or directly on the HTML element.

This example shows how text in the color `rgb(234, 205, 191)` looks like.

```
.text, #text, p{  
    color:rgb(234, 205, 191)  
}
```

If you want to add a text shadow in that color use the text-shadow property, you can generate a text shadow directly with our [CSS Text Shadow Generator](#).

Here you see how black text with a 4 pixel rgb(234, 205, 191) colored shadow looks like.

```
.shadow{ text-shadow: 4px 4px 2px rgb(234, 205, 191) }
```

## Border

The CSS property to change the border of an element to Yxy 64.9167, 0.3458, 0.3444 is called "border". The border property can be set on classes, ids or directly on the HTML element.

This example shows the color as border, it can be applied via the CSS property "border" or "border-color".

```
.border, #border, table{ border:4px solid rgb(234, 205, 191) }
```

If only the border color should be changed use the property `border-color`.

```
.border{ border-color:rgb(234, 205, 191) }
```

If you want to add a box shadow in that color use:

Here you see how a box with a 4 pixel `rgb(234, 205, 191)` colored shadow looks like.

```
.boxshadow{ -moz-box-shadow:4px 4px 4px 4px rgb(234, 205, 191); -webkit-box-shadow:4px 4px 4px 4px rgb(234, 205, 191); box-shadow:4px 4px 4px 4px rgb(234, 205, 191) }
```



# Background

The CSS property to change the background color of an element to Yxy 64.9167, 0.3458, 0.3444 is called "background". The background property can be set on classes, ids or directly on the HTML element.

```
.background, #background, body{  
background: rgb(234, 205, 191) }
```

If only the background color should be changed can be used:

```
.background{ background-color: rgb(234,  
205, 191) }
```

This example shows the color as background, it is applied via the CSS property "background".

To optimize and compress your CSS code, you can use our [online CSS compressor and optimizer](#) based on csstidy. If you want to create a linear or radial gradient as background or border, check our [CSS Gradient Generator](#).

Hey! You found this booklet interesting? Support Converting Colors with the new Membership Option!

The pro membership hides all ads, plus gives you double the colors in the color bucket, and more awesome pro features!

**[Learn more, Memberships starting at \\$2.50/m!](#)**

**Follow me  
on Twitter!**

@ConvertingColor