

# Converting Colors

Yxy(65.0623, 0.3328, 0.3291)

Have a look what the booklet for  
Yxy(65.0623, 0.3328, 0.3291)  
contains.

<b>Yxy(65.0593, 0.3328, 0.3291)</b> .....	3
<b>Conversions</b> .....	4
<b>Details</b> .....	6
<b>Harmonies</b> .....	12
<b>Previews</b> .....	24
<b>Color Blindness Simulation</b> .....	27
<b>CSS Examples</b> .....	30

# Color

**Yxy(65.0593, 0.3328, 0.3291)**

# Conversions

## Conversions Part 1

Format	Color
Hex	E7CDCE
RGB	231, 205, 205
RGB Percent	91%, 80%, 80%
CMY	0.0943, 0.1960, 0.1961
CMYK	0.00, 0.11, 0.11, 0.09
HSL	0°, 35%, 85%
HSV	0°, 11%, 91%
XYZ	65.7907, 65.0593, 66.8385
YIQ	212.7740, 15.4960, 5.5120

# Conversions

## Conversions Part 2

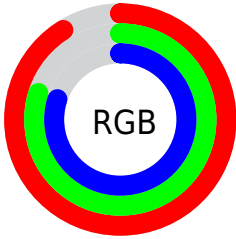
<b>Format</b>	<b>Color</b>
R <sub>Y</sub> B	231, 205, 205
Decimal	15191501
CIE Lab	84.51, 9.04, 3.33
CIE LCh	85, 9.636, 20.188
Yxy	65.0593, 0.3328, 0.3291
Android (android.graphics.Color)	4293381581 (0xFFE7CDCD)
YUV	212.7740, -3.8326, 15.9842
Hunter-Lab	80.6593, 4.4418, 7.3308

# Details

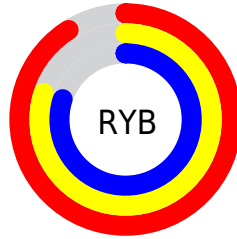
The Yxy color **65.0593, 0.3328, 0.3291** is a light color, and the websafe version is hex **FFCCCC**. A complement of this color would be **75.8420, 0.2955, 0.3289**, and the grayscale version is **66.3964, 0.3127, 0.3290**.

A 20% lighter version of the original color is **100.0000, 0.3127, 0.3290**, and **33.4815, 0.3374, 0.3291** is the 20% darker color. If you saturate the color by 10%, you get **53.7952, 0.3555, 0.3292**, and if you desaturate by 10%, it is **78.1195, 0.3147, 0.3290**.

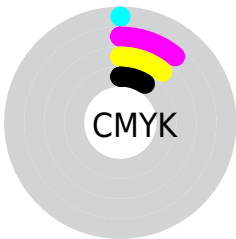
# Distribution



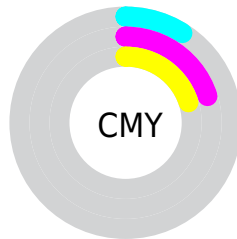
- Red (91%)
- Green (80%)
- Blue (80%)



- Red (91%)
- Yellow (80%)
- Blue (80%)



- Cyan (0%)
- Magenta (11%)
- Yellow (11%)
- Black (9%)




- Cyan (9%)
- Magenta (20%)
- Yellow (20%)


# Brightness & Saturation Gradients

These gradients show how the Yxy color 65.0593, 0.3328, 0.3291 changes by changing the brightness by 10 percent. The first figure shows a shift by +10% for each color and the second figure -10%.

Similar to the brightness gradients but the following saturation gradients show a change of the Yxy color 65.0593, 0.3328, 0.3291 by changing the saturation by 10% instead.




 65.0593, 0.3328,  
0.3291

 65.0593, 0.3328,  
0.3291

443.0050, 0.3233,  
0.3291

 47.5092, 0.3350,  
0.3291


112.1351, 0.3294,  
0.3291

 33.4384, 0.3378,  
0.3290


142.4296, 0.3282,  
0.3291

 22.4625, 0.3414,  
0.3290


177.7409, 0.3271,  
0.3291

 14.1971, 0.3462,  
0.3289

218.4536, 0.3261,  
0.3291

 8.2579, 0.3529,  
0.3287

264.9519, 0.3253,  
0.3291

 4.2604, 0.3630,  
0.3282

317.6204, 0.3245,

 1.8203, 0.3798,

0.3291

376.8433, 0.3239,  
0.3291

0.3273

0.4998, 0.4616,  
0.3316

0.0000, 0.0000,  
0.0000

65.0593, 0.3328,  
0.3291

65.0593, 0.3328,  
0.3291

53.7952, 0.3555,  
0.3292

78.1195, 0.3147,  
0.3290

44.2407, 0.3838,  
0.3293

93.0405, 0.3002,  
0.3289

36.3148, 0.4187,  
0.3295

95.7197, 0.2981,  
0.3290

29.9267, 0.4602,  
0.3296

■ 24.9767, 0.5070,  
0.3298

■ 21.3535, 0.5550,  
0.3299

■ 18.9292, 0.5974,  
0.3300

■ 17.5511, 0.6266,  
0.3300

■ 16.9873, 0.6400,  
0.3300

# Harmonies

## Analogous

The Analogous color harmony consists of three colors that are next to each other on the color wheel.



65.0593, 0.3236, 0.3190



65.0593, 0.3328, 0.3291



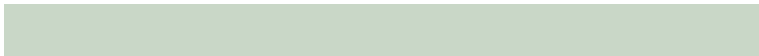
65.0593, 0.3365, 0.3393

# Triad

The Triadic color harmony groups three colors that are evenly spaced from another and form a triangle on the color wheel.



65.0593, 0.3328, 0.3291



65.0593, 0.3135, 0.3473



65.0593, 0.2921, 0.3108

# Complementary

The Complementary color scheme is a pair of colors which are on the opposite of each other on the color wheel.



65.0593, 0.3328, 0.3291



75.8420, 0.2955, 0.3289

# Split Complementary

Split-complementary colors differ from the complementary color scheme. The scheme consists of three colors, the original color and two neighbors of the complement color.



65.0593, 0.2895, 0.3180



65.0593, 0.3328, 0.3291



65.0593, 0.3017, 0.3393

# Square

The Square scheme is like the rectangle color scheme, but the four colors are evenly spaced on the color wheel.



65.0593, 0.3328, 0.3291



65.0593, 0.3252, 0.3502



65.0593, 0.2930, 0.3284



65.0593, 0.3001, 0.3086



# Rectangle

The Rectangle color scheme consists of four colors that form a rectangle on the color wheel.



65.0593, 0.3328, 0.3291



65.0593, 0.3353, 0.3450



65.0593, 0.2930, 0.3284



65.0593, 0.2905, 0.3127

# Sweetspot

The Sweet Spot groups the original color and five complimentary colors.



65.0622, 0.3328, 0.3291



94.7400, 0.3176, 0.3290



66.4024, 0.3140, 0.3014



19.9850, 0.3190, 0.3290



0.0000, 0.0000, 0.0000



21.4041, 0.3127, 0.3290



# Same Dimension

The Same Dimension uses a secret algorithm to generate beautiful new colors.



65.0622, 0.3328, 0.3291



78.7158, 0.3366, 0.3291



71.5117, 0.3311, 0.3431



14.3715, 0.3293, 0.3291



9.5302, 0.6400, 0.3301



0.7055, 0.6396, 0.3303



# Inverse Universe

The Inverse Universe completely reimagines the original color for something new.



75.8420, 0.2955, 0.3289



94.2135, 0.2928, 0.3289



68.8686, 0.2953, 0.3145



16.3324, 0.2982, 0.3289



35.1653, 0.2245, 0.3283

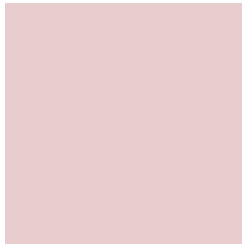


2.5998, 0.2245, 0.3284



# Previews

## White Background



This preview shows how the Yxy color 65.0593, 0.3328, 0.3291 looks on a white background.

## Color Contrast Check

Large Text (above 18pt) WCAG AA × Fail

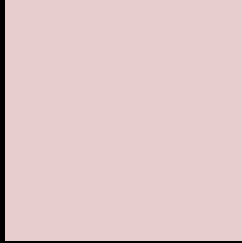
Any Text WCAG AA × Fail

Large Text (above 18pt) WCAG AAA × Fail

Any Text WCAG AAA × Fail



# Black Background



This preview shows how the Yxy color 65.0593, 0.3328, 0.3291 looks on a black background.

## Color Contrast Check

Large Text (above 18pt) WCAG AA ✓ Pass

Any Text WCAG AA ✓ Pass

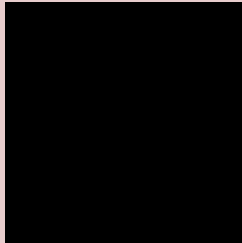
Large Text (above 18pt) WCAG AAA ✓ Pass

Any Text WCAG AAA ✓ Pass

If you want to check with other color combinations, try the [Color Contrast Checker](#).

**Yxy 65.0593, 0.3328, 0.3291**

## **Background**



This preview shows how black text looks on a background with the Yxy color 65.0593, 0.3328, 0.3291.



This preview shows how white text looks on a background with the Yxy color 65.0593, 0.3328, 0.3291.

# Color Blindness Simulation

Color vision deficiency is a very complex topic, and I could not describe the different causes any better than Wikipedia does, so if you want to learn more, you should check out their [article about color blindness](#).

## Dichromacy



### Original Color

65.0593, 0.3328, 0.3291

### Protanopia

65.0943, 0.3178, 0.3313

### Deuteranopia

65.0859, 0.3353, 0.3280



## Tritanopia

65.1500, 0.3243, 0.3118

# Trichromacy



## Original Color

65.0593, 0.3328, 0.3291

## Protanomaly

64.9889, 0.3233, 0.3301

## Deuteranomaly

64.9171, 0.3345, 0.3280

## Tritanomaly

65.1966, 0.3271, 0.3182

# Monochromacy



## Original Color

65.0593, 0.3328, 0.3291

## Achromatopsia

66.5387, 0.3127, 0.3290

## Achromatomaly

65.9620, 0.3202, 0.3290

# CSS Examples

## Text

The CSS property to change the color of the text to Yxy 65.0593, 0.3328, 0.3291 is called "color". The color property can be set on classes, ids or directly on the HTML element.

This example shows how text in the color `rgb(231, 205, 205)` looks like.

```
.text, #text, p{  
    color:rgb(231, 205, 205)  
}
```

If you want to add a text shadow in that color use the text-shadow property, you can generate a text shadow directly with our [CSS Text Shadow Generator](#).

Here you see how black text with a 4 pixel rgb(231, 205, 205) colored shadow looks like.

```
.shadow{ text-shadow: 4px 4px 2px rgb(231, 205, 205) }
```

## Border

The CSS property to change the border of an element to Yxy 65.0593, 0.3328, 0.3291 is called "border". The border property can be set on classes, ids or directly on the HTML element.

This example shows the color as border, it can be applied via the CSS property "border" or "border-color".

```
.border, #border, table{ border:4px solid rgb(231, 205, 205) }
```

If only the border color should be changed use the property border-color.

```
.border{ border-color:rgb(231, 205, 205) }
```

If you want to add a box shadow in that color use:

Here you see how a box with a 4 pixel rgb(231, 205, 205) colored shadow looks like.

```
.boxshadow{ -moz-box-shadow:4px 4px 4px  
4px rgb(231, 205, 205); -webkit-box-  
shadow:4px 4px 4px 4px rgb(231, 205, 205);  
box-shadow:4px 4px 4px 4px rgb(231, 205,  
205) }
```



# Background

The CSS property to change the background color of an element to Yxy 65.0593, 0.3328, 0.3291 is called "background". The background property can be set on classes, ids or directly on the HTML element.

```
.background, #background, body{  
background: rgb(231, 205, 205) }
```

If only the background color should be changed can be used:

```
.background{ background-color: rgb(231,  
205, 205) }
```

This example shows the color as background, it is applied via the CSS property "background".

To optimize and compress your CSS code, you can use our [online CSS compressor and optimizer](#) based on csstidy. If you want to create a linear or radial gradient as background or border, check our [CSS Gradient Generator](#).

Hey! You found this booklet interesting? Support Converting Colors with the new Membership Option!

The pro membership hides all ads, plus gives you double the colors in the color bucket, and more awesome pro features!

**[Learn more, Memberships starting at \\$2.50/m!](#)**

**Follow me  
on Twitter!**

@ConvertingColor