

Converting Colors

Yxy(65.1042, 0.3271, 0.3269)

Have a look what the booklet for
Yxy(65.1042, 0.3271, 0.3269)
contains.

Yxy(65.0276, 0.3274, 0.3268)	3
Conversions	4
Details	6
Harmonies	12
Previews	24
Color Blindness Simulation	27
CSS Examples	30

Color

Yxy(65.0276, 0.3274, 0.3268)

Conversions

Conversions Part 1

Format	Color
Hex	E3CED0
RGB	227, 206, 208
RGB Percent	89%, 81%, 82%
CMY	0.1096, 0.1922, 0.1842
CMYK	0.00, 0.09, 0.08, 0.11
HSL	354°, 27%, 85%
HSV	354°, 9%, 89%
XYZ	65.1470, 65.0276, 68.8083
YIQ	212.5070, 11.8740, 5.0740

Conversions

Conversions Part 2

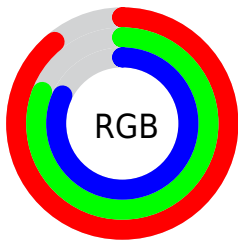
Format	Color
R _Y B	227, 206, 208
Decimal	14929616
CIE Lab	84.50, 7.67, 1.64
CIE LCh	84, 7.841, 12.099
Yxy	65.0276, 0.3274, 0.3268
Android (android.graphics.Color)	4293119696 (0xFFE3CED0)
YUV	212.5070, -2.2220, 12.7104
Hunter-Lab	80.6397, 3.0867, 5.8568

Details

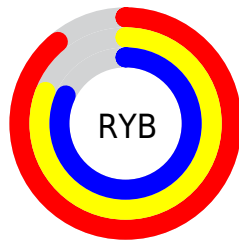
The Yxy color $65.0276, 0.3274, 0.3268$ is a light color, and the websafe version is hex `CCCCCC`. A complement of this color would be $73.5178, 0.2997, 0.3312$, and the grayscale version is $66.2079, 0.3127, 0.3290$.

A 20% lighter version of the original color is $100.0000, 0.3127, 0.3290$, and $33.5602, 0.3312, 0.3262$ is the 20% darker color. If you saturate the color by 10%, you get $53.9325, 0.3470, 0.3243$, and if you desaturate by 10%, it is $77.8379, 0.3117, 0.3292$.

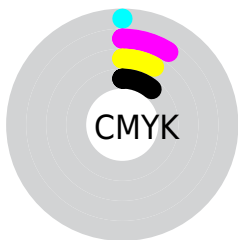
Distribution



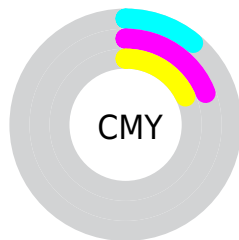
- Red (89%)
- Green (81%)
- Blue (82%)



- Red (89%)
- Yellow (81%)
- Blue (82%)



- Cyan (0%)
- Magenta (9%)
- Yellow (8%)
- Black (11%)




- Cyan (11%)
- Magenta (19%)
- Yellow (18%)

Brightness & Saturation Gradients


These gradients show how the Yxy color 65.0276, 0.3274, 0.3268 changes by changing the brightness by 10 percent. The first figure shows a shift by +10% for each color and the second figure -10%.

Similar to the brightness gradients but the following saturation gradients show a change of the Yxy color 65.0276, 0.3274, 0.3268 by changing the saturation by 10% instead.


 65.0276, 0.3274,
0.3268

 65.0276, 0.3274,
0.3268


442.8911, 0.3205,
0.3279

 47.4835, 0.3290,
0.3265


112.0895, 0.3250,
0.3272

 33.4180, 0.3311,
0.3262


142.3761, 0.3240,
0.3273

 22.4469, 0.3337,
0.3258


177.6790, 0.3232,
0.3275

 14.1856, 0.3372,
0.3252

218.3825, 0.3225,
0.3276

 8.2499, 0.3421,
0.3244

264.8711, 0.3219,
0.3277

 4.2553, 0.3494,
0.3231

317.5291, 0.3214,

 1.8173, 0.3615,

0.3277

0.3209

376.7410, 0.3209,
0.3278

0.4980, 0.4165,
0.3140

0.0000, 0.0000,
0.0000

65.0276, 0.3274,
0.3268

65.0276, 0.3274,
0.3268

53.9325, 0.3470,
0.3243

77.8379, 0.3117,
0.3292

44.4716, 0.3713,
0.3217

92.4229, 0.2991,
0.3313

36.5703, 0.4013,
0.3191

95.0777, 0.2958,
0.3290

30.1448, 0.4374,
0.3169

■ 25.1034, 0.4793,
0.3155

■ 21.3441, 0.5245,
0.3153

■ 18.7511, 0.5687,
0.3169

■ 17.1873, 0.6054,
0.3203

■ 16.4373, 0.6294,
0.3246

Harmonies

Analogous

The Analogous color harmony consists of three colors that are next to each other on the color wheel.



65.0276, 0.3191, 0.3189



65.0276, 0.3274, 0.3268



65.0276, 0.3318, 0.3353

Triad

The Triadic color harmony groups three colors that are evenly spaced from another and form a triangle on the color wheel.



65.0276, 0.3274, 0.3268



65.0276, 0.3161, 0.3449



65.0276, 0.2948, 0.3154

Complementary

The Complementary color scheme is a pair of colors which are on the opposite of each other on the color wheel.



65.0276, 0.3274, 0.3268



73.5178, 0.2997, 0.3312

Split Complementary

Split-complementary colors differ from the complementary color scheme. The scheme consists of three colors, the original color and two neighbors of the complement color.



65.0276, 0.2941, 0.3222



65.0276, 0.3274, 0.3268



65.0276, 0.3062, 0.3394

Square

The Square scheme is like the rectangle color scheme, but the four colors are evenly spaced on the color wheel.



65.0276, 0.3274, 0.3268



65.0276, 0.3251, 0.3460



65.0276, 0.2982, 0.3310



65.0276, 0.3003, 0.3124

Rectangle

The Rectangle color scheme consists of four colors that form a rectangle on the color wheel.



65.0276, 0.3274, 0.3268



65.0276, 0.3318, 0.3403



65.0276, 0.2982, 0.3310



65.0276, 0.2940, 0.3173

Sweetspot

The Sweet Spot groups the original color and five complimentary colors.



65.0305, 0.3274, 0.3268



94.7787, 0.3172, 0.3283



65.6831, 0.3122, 0.3062



19.9954, 0.3184, 0.3281



0.0000, 0.0000, 0.0000



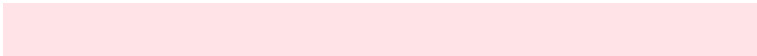
21.4041, 0.3127, 0.3290

Same Dimension

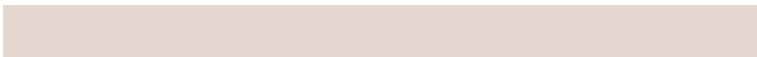
The Same Dimension uses a secret algorithm to generate beautiful new colors.



65.0305, 0.3274, 0.3268



81.8651, 0.3306, 0.3264



69.0945, 0.3279, 0.3383



14.3905, 0.3277, 0.3268



9.5656, 0.6287, 0.3237



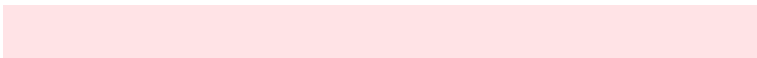
0.7146, 0.6019, 0.3089

Inverse Universe

The Inverse Universe completely reimagines the original color for something new.



65.0305, 0.3274, 0.3268



81.8651, 0.3306, 0.3264



69.1340, 0.2984, 0.3196



14.3905, 0.3277, 0.3268



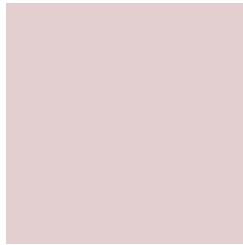
9.5656, 0.6287, 0.3237



0.7146, 0.6019, 0.3089

Previews

White Background



This preview shows how the Yxy color 65.0276, 0.3274, 0.3268 looks on a white background.

Color Contrast Check

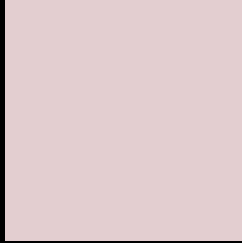
Large Text (above 18pt) WCAG AA × Fail

Any Text WCAG AA × Fail

Large Text (above 18pt) WCAG AAA × Fail

Any Text WCAG AAA × Fail

Black Background



This preview shows how the Yxy color 65.0276, 0.3274, 0.3268 looks on a black background.

Color Contrast Check

Large Text (above 18pt) WCAG AA ✓ Pass

Any Text WCAG AA ✓ Pass

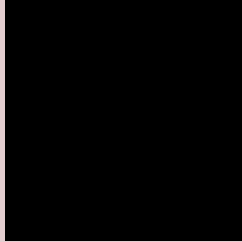
Large Text (above 18pt) WCAG AAA ✓ Pass

Any Text WCAG AAA ✓ Pass

If you want to check with other color combinations, try the [Color Contrast Checker](#).

Yxy 65.0276, 0.3274, 0.3268

Background



This preview shows how black text looks on a background with the Yxy color 65.0276, 0.3274, 0.3268.



This preview shows how white text looks on a background with the Yxy color 65.0276, 0.3274, 0.3268.

Color Blindness Simulation

Color vision deficiency is a very complex topic, and I could not describe the different causes any better than Wikipedia does, so if you want to learn more, you should check out their [article about color blindness](#).

Dichromacy



Original Color

65.0276, 0.3274, 0.3268

Protanopia

65.1934, 0.3164, 0.3290

Deuteranopia

64.8956, 0.3315, 0.3247



Tritanopia

65.0111, 0.3204, 0.3117

Trichromacy



Original Color

65.0276, 0.3274, 0.3268

Protanomaly

65.2644, 0.3202, 0.3290

Deuteranomaly

65.0397, 0.3298, 0.3258

Tritanomaly

65.1145, 0.3224, 0.3170

Monochromacy



Original Color

65.0276, 0.3274, 0.3268

Achromatopsia

66.5387, 0.3127, 0.3290

Achromatomaly

65.7018, 0.3180, 0.3279

CSS Examples

Text

The CSS property to change the color of the text to Yxy 65.0276, 0.3274, 0.3268 is called "color". The color property can be set on classes, ids or directly on the HTML element.

This example shows how text in the color `rgb(227, 206, 208)` looks like.

```
.text, #text, p{  
    color:rgb(227, 206, 208)  
}
```

If you want to add a text shadow in that color use the text-shadow property, you can generate a text shadow directly with our [CSS Text Shadow Generator](#).

Here you see how black text with a 4 pixel rgb(227, 206, 208) colored shadow looks like.

```
.shadow{ text-shadow: 4px 4px 2px rgb(227, 206, 208) }
```

Border

The CSS property to change the border of an element to Yxy 65.0276, 0.3274, 0.3268 is called "border". The border property can be set on classes, ids or directly on the HTML element.

This example shows the color as border, it can be applied via the CSS property "border" or "border-color".

```
.border, #border, table{ border:4px solid rgb(227, 206, 208) }
```

If only the border color should be changed use the property `border-color`.

```
.border{ border-color:rgb(227, 206, 208) }
```

If you want to add a box shadow in that color use:

Here you see how a box with a 4 pixel `rgb(227, 206, 208)` colored shadow looks like.

```
.boxshadow{ -moz-box-shadow:4px 4px 4px  
4px rgb(227, 206, 208); -webkit-box-  
shadow:4px 4px 4px 4px rgb(227, 206, 208);  
box-shadow:4px 4px 4px 4px rgb(227, 206,  
208) }
```


Background

The CSS property to change the background color of an element to Yxy 65.0276, 0.3274, 0.3268 is called "background". The background property can be set on classes, ids or directly on the HTML element.

```
.background, #background, body{  
background: rgb(227, 206, 208) }
```

If only the background color should be changed can be used:

```
.background{ background-color: rgb(227,  
206, 208) }
```

This example shows the color as background, it is applied via the CSS property "background".

To optimize and compress your CSS code, you can use our [online CSS compressor and optimizer](#) based on csstidy. If you want to create a linear or radial gradient as background or border, check our [CSS Gradient Generator](#).

Hey! You found this booklet interesting? Support Converting Colors with the new Membership Option!

The pro membership hides all ads, plus gives you double the colors in the color bucket, and more awesome pro features!

[Learn more, Memberships starting at \\$2.50/m!](#)

**Follow me
on Twitter!**

@ConvertingColor