

Converting Colors

$Yxy(65.1229, 0.3237, 0.3302)$

Have a look what the booklet for
Yxy(65.1229, 0.3237, 0.3302)
contains.

Yxy(65.1463, 0.3240, 0.3301)	3
Conversions	4
Details	6
Harmonies	12
Previews	24
Color Blindness Simulation	27
CSS Examples	30

Color

Yxy(65.1463, 0.3240, 0.3301)

Conversions

Conversions Part 1

Format	Color
Hex	DED0CF
RGB	222, 208, 207
RGB Percent	87%, 82%, 81%
CMY	0.1295, 0.1843, 0.1881
CMYK	0.00, 0.06, 0.07, 0.13
HSL	4°, 18%, 84%
HSV	4°, 7%, 87%
XYZ	63.9424, 65.1463, 68.2645
YIQ	212.0720, 8.6650, 2.6570

Conversions

Conversions Part 2

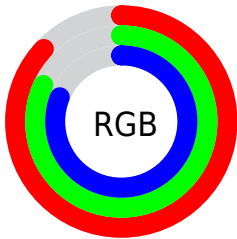
Format	Color
R _Y B	222, 208, 207
Decimal	14602447
CIE Lab	84.56, 4.67, 2.20
CIE LCh	85, 5.163, 25.249
Yxy	65.1463, 0.3240, 0.3301
Android (android.graphics.Color)	4292792527 (0xFFDED0CF)
YUV	212.0720, -2.5005, 8.7069
Hunter-Lab	80.7133, 0.1626, 6.3538

Details

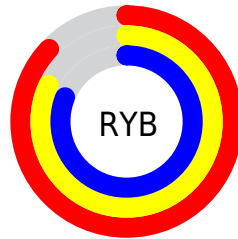
The Yxy color **65.1463, 0.3240, 0.3301** is a light color, and the websafe version is hex **CCCCCC**. A complement of this color would be **70.2687, 0.3023, 0.3279**, and the grayscale version is **65.9030, 0.3127, 0.3290**.

A 20% lighter version of the original color is **100.0000, 0.3127, 0.3290**, and **33.6266, 0.3267, 0.3305** is the 20% darker color. If you saturate the color by 10%, you get **54.6644, 0.3441, 0.3319**, and if you desaturate by 10%, it is **77.1128, 0.3078, 0.3285**.

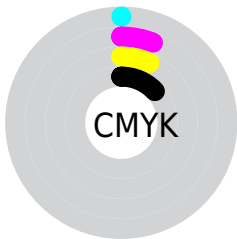
Distribution



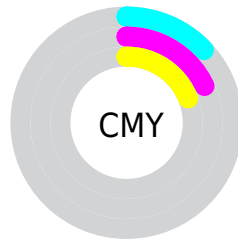
- Red (87%)
- Green (82%)
- Blue (81%)



- Red (87%)
- Yellow (82%)
- Blue (81%)



- Cyan (0%)
- Magenta (6%)
- Yellow (7%)
- Black (13%)



- Cyan (13%)
- Magenta (18%)
- Yellow (19%)

Brightness & Saturation Gradients

These gradients show how the Yxy color 65.1463, 0.3240, 0.3301 changes by changing the brightness by 10 percent. The first figure shows a shift by +10% for each color and the second figure -10%.

Similar to the brightness gradients but the following saturation gradients show a change of the Yxy color 65.1463, 0.3240, 0.3301 by changing the saturation by 10% instead.

■ 65.1463, 0.3240,
0.3301

■ 65.1463, 0.3240,
0.3301

443.3175, 0.3187,
0.3296

■ 47.5797, 0.3253,
0.3302

112.2602, 0.3221,
0.3299

■ 33.4942, 0.3268,
0.3303

142.5762, 0.3214,
0.3299

■ 22.5053, 0.3288,
0.3305

177.9109, 0.3208,
0.3298

■ 14.2286, 0.3315,
0.3307

218.6486, 0.3202,
0.3298

■ 8.2799, 0.3353,
0.3310

265.1738, 0.3198,
0.3297

■ 4.2745, 0.3409,
0.3314

317.8707, 0.3194,

■ 1.8283, 0.3502,

0.3297

0.3319

377.1238, 0.3190,
0.3296

0.5047, 0.3974,
0.3378

0.0000, 0.0000,
0.0000

65.1463, 0.3240,
0.3301

65.1463, 0.3240,
0.3301

54.6644, 0.3441,
0.3319

77.1128, 0.3078,
0.3285

45.6012, 0.3690,
0.3337

90.6096, 0.2947,
0.3270

37.8981, 0.3995,
0.3356

94.2667, 0.2929,
0.3289

31.4896, 0.4362,
0.3373

■ 26.3047, 0.4787,
0.3385

■ 22.2652, 0.5249,
0.3390

■ 19.2844, 0.5700,
0.3384

■ 17.2629, 0.6074,
0.3364

■ 16.0818, 0.6310,
0.3335

Harmonies

Analogous

The Analogous color harmony consists of three colors that are next to each other on the color wheel.



65.1463, 0.3195, 0.3245



65.1463, 0.3240, 0.3301



65.1463, 0.3254, 0.3355

Triad

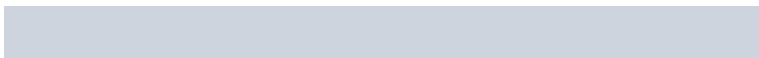
The Triadic color harmony groups three colors that are evenly spaced from another and form a triangle on the color wheel.



65.1463, 0.3240, 0.3301



65.1463, 0.3121, 0.3382



65.1463, 0.3022, 0.3188

Complementary

The Complementary color scheme is a pair of colors which are on the opposite of each other on the color wheel.



65.1463, 0.3240, 0.3301



70.2687, 0.3023, 0.3279

Split Complementary

Split-complementary colors differ from the complementary color scheme. The scheme consists of three colors, the original color and two neighbors of the complement color.



65.1463, 0.3002, 0.3224



65.1463, 0.3240, 0.3301



65.1463, 0.3059, 0.3336

Square

The Square scheme is like the rectangle color scheme, but the four colors are evenly spaced on the color wheel.



65.1463, 0.3240, 0.3301



65.1463, 0.3185, 0.3402



65.1463, 0.3016, 0.3278



65.1463, 0.3069, 0.3180

Rectangle

The Rectangle color scheme consists of four colors that form a rectangle on the color wheel.



65.1463, 0.3240, 0.3301



65.1463, 0.3244, 0.3382



65.1463, 0.3016, 0.3278



65.1463, 0.3012, 0.3197

Sweetspot

The Sweet Spot groups the original color and five complimentary colors.



65.1491, 0.3240, 0.3301



96.6689, 0.3159, 0.3293



65.4077, 0.3140, 0.3134



20.7260, 0.3158, 0.3293



0.0000, 0.0000, 0.0000



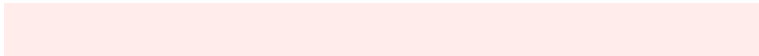
21.4041, 0.3127, 0.3290

Same Dimension

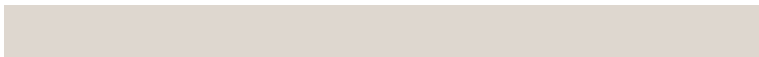
The Same Dimension uses a secret algorithm to generate beautiful new colors.



65.1491, 0.3240, 0.3301



87.1756, 0.3264, 0.3303



68.7676, 0.3233, 0.3381



13.8413, 0.3290, 0.3306



9.4711, 0.6351, 0.3339



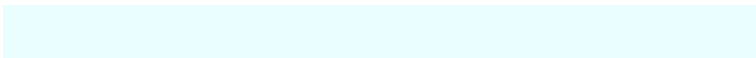
0.7070, 0.6214, 0.3448

Inverse Universe

The Inverse Universe completely reimagines the original color for something new.



70.2687, 0.3023, 0.3279



95.4995, 0.3003, 0.3277



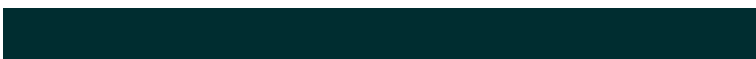
66.5203, 0.3024, 0.3197



15.4134, 0.2982, 0.3274



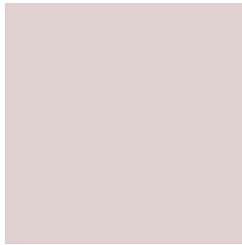
29.9092, 0.2191, 0.3089



2.1194, 0.2201, 0.3122

Previews

White Background



This preview shows how the Yxy color 65.1463, 0.3240, 0.3301 looks on a white background.

Color Contrast Check

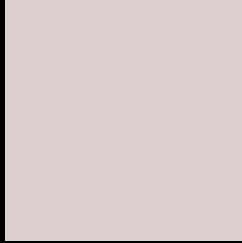
Large Text (above 18pt) WCAG AA × Fail

Any Text WCAG AA × Fail

Large Text (above 18pt) WCAG AAA × Fail

Any Text WCAG AAA × Fail

Black Background



This preview shows how the Yxy color 65.1463, 0.3240, 0.3301 looks on a black background.

Color Contrast Check

Large Text (above 18pt) WCAG AA ✓ Pass

Any Text WCAG AA ✓ Pass

Large Text (above 18pt) WCAG AAA ✓ Pass

Any Text WCAG AAA ✓ Pass

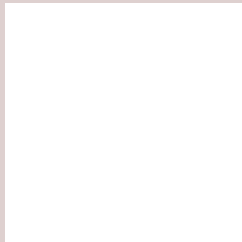
If you want to check with other color combinations, try the [Color Contrast Checker](#).

Yxy 65.1463, 0.3240, 0.3301

Background



This preview shows how black text looks on a background with the Yxy color 65.1463, 0.3240, 0.3301.



This preview shows how white text looks on a background with the Yxy color 65.1463, 0.3240, 0.3301.

Color Blindness Simulation

Color vision deficiency is a very complex topic, and I could not describe the different causes any better than Wikipedia does, so if you want to learn more, you should check out their [article about color blindness](#).

Dichromacy



Original Color

65.1463, 0.3240, 0.3301

Protanopia

65.0943, 0.3178, 0.3313

Deuteranopia

65.0634, 0.3323, 0.3247



Tritanopia

65.2638, 0.3150, 0.3115

Trichromacy



Original Color

65.1463, 0.3240, 0.3301

Protanomaly

65.0604, 0.3202, 0.3301

Deuteranomaly

64.8747, 0.3291, 0.3258

Tritanomaly

65.3234, 0.3178, 0.3180

Monochromacy



Original Color

65.1463, 0.3240, 0.3301

Achromatopsia

65.8375, 0.3127, 0.3290

Achromatomaly

65.8406, 0.3171, 0.3301

CSS Examples

Text

The CSS property to change the color of the text to Yxy 65.1463, 0.3240, 0.3301 is called "color". The color property can be set on classes, ids or directly on the HTML element.

This example shows how text in the color `rgb(222, 208, 207)` looks like.

```
.text, #text, p{  
    color:rgb(222, 208, 207)  
}
```

If you want to add a text shadow in that color use the text-shadow property, you can generate a text shadow directly with our [CSS Text Shadow Generator](#).

Here you see how black text with a 4 pixel rgb(222, 208, 207) colored shadow looks like.

```
.shadow{ text-shadow: 4px 4px 2px rgb(222, 208, 207) }
```

Border

The CSS property to change the border of an element to Yxy 65.1463, 0.3240, 0.3301 is called "border". The border property can be set on classes, ids or directly on the HTML element.

This example shows the color as border, it can be applied via the CSS property "border" or "border-color".

```
.border, #border, table{ border:4px solid rgb(222, 208, 207) }
```

If only the border color should be changed use the property `border-color`.

```
.border{ border-color:rgb(222, 208, 207) }
```

If you want to add a box shadow in that color use:

Here you see how a box with a 4 pixel `rgb(222, 208, 207)` colored shadow looks like.

```
.boxshadow{ -moz-box-shadow:4px 4px 4px  
4px rgb(222, 208, 207); -webkit-box-  
shadow:4px 4px 4px 4px rgb(222, 208, 207);  
box-shadow:4px 4px 4px 4px rgb(222, 208,  
207) }
```


Background

The CSS property to change the background color of an element to Yxy 65.1463, 0.3240, 0.3301 is called "background". The background property can be set on classes, ids or directly on the HTML element.

```
.background, #background, body{  
background: rgb(222, 208, 207) }
```

If only the background color should be changed can be used:

```
.background{ background-color: rgb(222,  
208, 207) }
```

This example shows the color as background, it is applied via the CSS property "background".

To optimize and compress your CSS code, you can use our [online CSS compressor and optimizer](#) based on csstidy. If you want to create a linear or radial gradient as background or border, check our [CSS Gradient Generator](#).

Hey! You found this booklet interesting? Support Converting Colors with the new Membership Option!

The pro membership hides all ads, plus gives you double the colors in the color bucket, and more awesome pro features!

[Learn more, Memberships starting at \\$2.50/m!](#)

**Follow me
on Twitter!**

@ConvertingColor