

# Converting Colors

Yxy(65.2286, 0.3282, 0.3200)

Have a look what the booklet for  
Yxy(65.2286, 0.3282, 0.3200)  
contains.

<b>Yxy(65.1456, 0.3278, 0.3193)</b> .....	3
<b><i>Conversions</i></b> .....	4
<b><i>Details</i></b> .....	6
<b><i>Harmonies</i></b> .....	12
<b><i>Previews</i></b> .....	24
<b><i>Color Blindness Simulation</i></b> .....	27
<b><i>CSS Examples</i></b> .....	30

# Color

**Yxy(65.1456, 0.3278, 0.3193)**

# Conversions

## Conversions Part 1

<b>Format</b>	<b>Color</b>
Hex	E8CCD5
RGB	232, 204, 213
RGB Percent	91%, 80%, 84%
CMY	0.0902, 0.2000, 0.1647
CMYK	0.00, 0.12, 0.08, 0.09
HSL	341°, 38%, 85%
HSV	341°, 12%, 91%
XYZ	66.8798, 65.1456, 72.0009
YIQ	213.3980, 13.7990, 8.7350

# Conversions

## Conversions Part 2

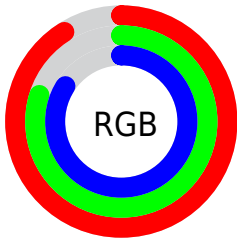
Format	Color
R <sub>Y</sub> B	232, 204, 213
Decimal	15256789
CIE Lab	84.56, 11.28, -0.87
CIE LCh	85, 11.313, 355.609
Yxy	65.1456, 0.3278, 0.3193
Android (android.graphics.Color)	4293446869 (0xFFE8CCD5)
YUV	213.3980, -0.1962, 16.3140
Hunter-Lab	80.7128, 6.6603, 3.6086

# Details

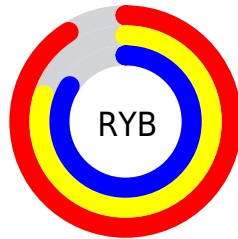
The Yxy color **65.1456, 0.3278, 0.3193** is a light color, and the websafe version is hex **FFCCCC**. A complement of this color would be **75.8752, 0.2996, 0.3389**, and the grayscale version is **66.8155, 0.3127, 0.3290**.

A 20% lighter version of the original color is **100.0000, 0.3127, 0.3290**, and **33.5114, 0.3317, 0.3177** is the 20% darker color. If you saturate the color by 10%, you get **54.1678, 0.3435, 0.3107**, and if you desaturate by 10%, it is **77.8493, 0.3150, 0.3274**.

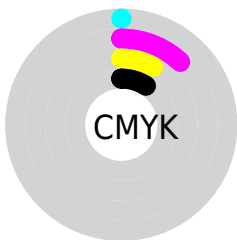
# Distribution



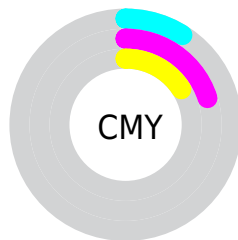
- Red (91%)
- Green (80%)
- Blue (84%)



- Red (91%)
- Yellow (80%)
- Blue (84%)



- Cyan (0%)
- Magenta (12%)
- Yellow (8%)
- Black (9%)




- Cyan (9%)
- Magenta (20%)
- Yellow (16%)

# Brightness & Saturation Gradients

These gradients show how the Yxy color 65.1456, 0.3278, 0.3193 changes by changing the brightness by 10 percent. The first figure shows a shift by +10% for each color and the second figure -10%.


Similar to the brightness gradients but the following saturation gradients show a change of the Yxy color 65.1456, 0.3278, 0.3193 by changing the saturation by 10% instead.



 65.1456, 0.3278,  
0.3193

 65.1456, 0.3278,  
0.3193


443.3150, 0.3207,  
0.3239

 47.5792, 0.3295,  
0.3182


112.2592, 0.3253,  
0.3209

 33.4937, 0.3315,  
0.3169

142.5751, 0.3243,  
0.3215

 22.5049, 0.3342,  
0.3152

177.9096, 0.3235,  
0.3221

 14.2284, 0.3377,  
0.3130

218.6471, 0.3228,  
0.3225

 8.2797, 0.3426,  
0.3098

265.1720, 0.3222,  
0.3229

 4.2744, 0.3500,  
0.3052

317.8687, 0.3216,

 1.8282, 0.3620,

0.3233

0.2977

377.1215, 0.3211,  
0.3236

0.5047, 0.4038,  
0.2699

0.0000, 0.0000,  
0.0000

65.1456, 0.3278,  
0.3193

65.1456, 0.3278,  
0.3193

54.1678, 0.3435,  
0.3107

77.8493, 0.3150,  
0.3274

44.8328, 0.3626,  
0.3020

92.3403, 0.3046,  
0.3349

37.0633, 0.3856,  
0.2934

95.8945, 0.2987,  
0.3290

30.7726, 0.4130,  
0.2857

■ 25.8652, 0.4445,  
0.2798

■ 22.2347, 0.4791,  
0.2770

■ 19.7585, 0.5148,  
0.2785

■ 18.2898, 0.5485,  
0.2848

■ 17.6566, 0.5721,  
0.2925

# Harmonies

## Analogous

The Analogous color harmony consists of three colors that are next to each other on the color wheel.



65.1456, 0.3140, 0.3099



65.1456, 0.3278, 0.3193



65.1456, 0.3376, 0.3313

# Triad

The Triadic color harmony groups three colors that are evenly spaced from another and form a triangle on the color wheel.



65.1456, 0.3278, 0.3193



65.1456, 0.3250, 0.3538



65.1456, 0.2856, 0.3141

# Complementary

The Complementary color scheme is a pair of colors which are on the opposite of each other on the color wheel.



65.1456, 0.3278, 0.3193



75.8752, 0.2996, 0.3389

# Split Complementary

Split-complementary colors differ from the complementary color scheme. The scheme consists of three colors, the original color and two neighbors of the complement color.



65.1456, 0.2884, 0.3259



65.1456, 0.3278, 0.3193



65.1456, 0.3110, 0.3493

# Square

The Square scheme is like the rectangle color scheme, but the four colors are evenly spaced on the color wheel.



65.1456, 0.3278, 0.3193



65.1456, 0.3360, 0.3514



65.1456, 0.2976, 0.3389



65.1456, 0.2898, 0.3067



# Rectangle

The Rectangle color scheme consists of four colors that form a rectangle on the color wheel.



65.1456, 0.3278, 0.3193



65.1456, 0.3405, 0.3393



65.1456, 0.2976, 0.3389



65.1456, 0.2857, 0.3177

# Sweetspot

The Sweet Spot groups the original color and five complimentary colors.



65.1485, 0.3278, 0.3193



93.2260, 0.3173, 0.3259



64.6502, 0.3072, 0.2987



19.6901, 0.3182, 0.3253



0.0000, 0.0000, 0.0000



21.4041, 0.3127, 0.3290



# Same Dimension

The Same Dimension uses a secret algorithm to generate beautiful new colors.



65.1485, 0.3278, 0.3193



77.8365, 0.3307, 0.3176



66.9549, 0.3338, 0.3341



14.4440, 0.3242, 0.3215



9.8233, 0.5679, 0.2902



0.7424, 0.5265, 0.2674



# Inverse Universe

The Inverse Universe completely reimagines the original color for something new.



65.1485, 0.3278, 0.3193



77.8365, 0.3307, 0.3176



73.7823, 0.2942, 0.3238



14.4440, 0.3242, 0.3215



9.8233, 0.5679, 0.2902

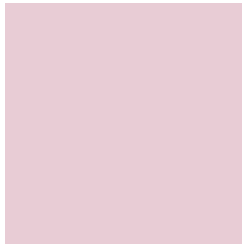


0.7424, 0.5265, 0.2674



# Previews

## White Background



This preview shows how the Yxy color 65.1456, 0.3278, 0.3193 looks on a white background.

## Color Contrast Check

Large Text (above 18pt) WCAG AA × Fail

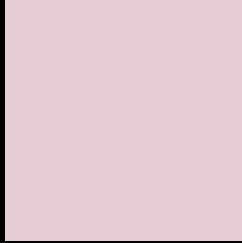
Any Text WCAG AA × Fail

Large Text (above 18pt) WCAG AAA × Fail

Any Text WCAG AAA × Fail



# Black Background



This preview shows how the Yxy color 65.1456, 0.3278, 0.3193 looks on a black background.

## Color Contrast Check

Large Text (above 18pt) WCAG AA ✓ Pass

Any Text WCAG AA ✓ Pass

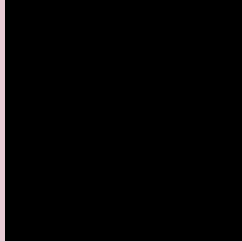
Large Text (above 18pt) WCAG AAA ✓ Pass

Any Text WCAG AAA ✓ Pass

If you want to check with other color combinations, try the [Color Contrast Checker](#).

**Yxy 65.1456, 0.3278, 0.3193**

## **Background**



This preview shows how black text looks on a background with the Yxy color 65.1456, 0.3278, 0.3193.



This preview shows how white text looks on a background with the Yxy color 65.1456, 0.3278, 0.3193.

# Color Blindness Simulation

Color vision deficiency is a very complex topic, and I could not describe the different causes any better than Wikipedia does, so if you want to learn more, you should check out their [article about color blindness](#).

## Dichromacy



### Original Color

65.1456, 0.3278, 0.3193

### Protanopia

65.2491, 0.3101, 0.3211

### Deuteranopia

65.4557, 0.3269, 0.3204



## Tritanopia

65.1500, 0.3243, 0.3118

# Trichromacy



## Original Color

65.1456, 0.3278, 0.3193

## Protanomaly

65.2853, 0.3161, 0.3202

## Deuteranomaly

65.4557, 0.3269, 0.3204

## Tritanomaly

65.0453, 0.3257, 0.3140

# Monochromacy



## Original Color

65.1456, 0.3278, 0.3193

## Achromatopsia

66.5387, 0.3127, 0.3290

## Achromatomaly

66.1129, 0.3181, 0.3257

# CSS Examples

## Text

The CSS property to change the color of the text to Yxy 65.1456, 0.3278, 0.3193 is called "color". The color property can be set on classes, ids or directly on the HTML element.

This example shows how text in the color `rgb(232, 204, 213)` looks like.

```
.text, #text, p{  
    color:rgb(232, 204, 213)  
}
```

If you want to add a text shadow in that color use the text-shadow property, you can generate a text shadow directly with our [CSS Text Shadow Generator](#).

Here you see how black text with a 4 pixel rgb(232, 204, 213) colored shadow looks like.

```
.shadow{ text-shadow: 4px 4px 2px rgb(232, 204, 213) }
```

## Border

The CSS property to change the border of an element to Yxy 65.1456, 0.3278, 0.3193 is called "border". The border property can be set on classes, ids or directly on the HTML element.

This example shows the color as border, it can be applied via the CSS property "border" or "border-color".

```
.border, #border, table{ border:4px solid rgb(232, 204, 213) }
```

If only the border color should be changed use the property `border-color`.

```
.border{ border-color:rgb(232, 204, 213) }
```

If you want to add a box shadow in that color use:

Here you see how a box with a 4 pixel `rgb(232, 204, 213)` colored shadow looks like.

```
.boxshadow{ -moz-box-shadow:4px 4px 4px  
4px rgb(232, 204, 213); -webkit-box-  
shadow:4px 4px 4px 4px rgb(232, 204, 213);  
box-shadow:4px 4px 4px 4px rgb(232, 204,  
213) }
```



# Background

The CSS property to change the background color of an element to Yxy 65.1456, 0.3278, 0.3193 is called "background". The background property can be set on classes, ids or directly on the HTML element.

```
.background, #background, body{  
background: rgb(232, 204, 213) }
```

If only the background color should be changed can be used:

```
.background{ background-color: rgb(232,  
204, 213) }
```

This example shows the color as background, it is applied via the CSS property "background".

To optimize and compress your CSS code, you can use our [online CSS compressor and optimizer](#) based on csstidy. If you want to create a linear or radial gradient as background or border, check our [CSS Gradient Generator](#).

Hey! You found this booklet interesting? Support Converting Colors with the new Membership Option!

The pro membership hides all ads, plus gives you double the colors in the color bucket, and more awesome pro features!

**[Learn more, Memberships starting at \\$2.50/m!](#)**

**Follow me  
on Twitter!**

@ConvertingColor