

Converting Colors

Yxy(65.3542, 0.3461, 0.3478)

Have a look what the booklet for
Yxy(65.3542, 0.3461, 0.3478)
contains.

Yxy(65.1404, 0.3463, 0.3478)	3
<i>Conversions</i>	4
<i>Details</i>	6
<i>Harmonies</i>	12
<i>Previews</i>	24
<i>Color Blindness Simulation</i>	27
<i>CSS Examples</i>	30

Color

Yxy(65.1404, 0.3463, 0.3478)

Conversions

Conversions Part 1

Format	Color
Hex	E9CEBD
RGB	233, 206, 189
RGB Percent	91%, 81%, 74%
CMY	0.0863, 0.1921, 0.2589
CMYK	0.00, 0.12, 0.19, 0.09
HSL	23°, 50%, 83%
HSV	23°, 19%, 91%
XYZ	64.8595, 65.1404, 57.2928
YIQ	212.1350, 21.5490, 0.4370

Conversions

Conversions Part 2

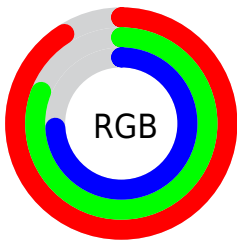
Format	Color
RYB	233, 217, 189
Decimal	15322813
CIELab	84.56, 6.77, 11.91
CIElCh	85, 13.697, 60.391
Yxy	65.1404, 0.3463, 0.3478
Android (android.graphics.Color)	4293512893 (0xFFE9CEBD)
YUV	212.1350, -11.4056, 18.2986
Hunter-Lab	80.7096, 2.2035, 14.4089

Details

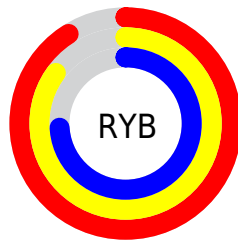
The Yxy color $65.1404, 0.3463, 0.3478$ is a light color, and the websafe version is hex `FFCCCC`. A complement of this color would be $65.8032, 0.2833, 0.3094$, and the grayscale version is $66.0005, 0.3127, 0.3290$.

A 20% lighter version of the original color is $99.3726, 0.3185, 0.3386$, and $33.5812, 0.3544, 0.3521$ is the 20% darker color. If you saturate the color by 10%, you get $57.6404, 0.3684, 0.3584$, and if you desaturate by 10%, it is $73.4344, 0.3273, 0.3376$.

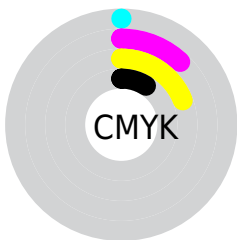
Distribution



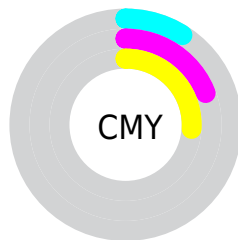
- Red (91%)
- Green (81%)
- Blue (74%)



- Red (91%)
- Yellow (85%)
- Blue (74%)



- Cyan (0%)
- Magenta (12%)
- Yellow (19%)
- Black (9%)





- Cyan (9%)
- Magenta (19%)
- Yellow (26%)

Brightness & Saturation Gradients

These gradients show how the Yxy color 65.1404, 0.3463, 0.3478 changes by changing the brightness by 10 percent. The first figure shows a shift by +10% for each color and the second figure -10%.


Similar to the brightness gradients but the following saturation gradients show a change of the Yxy color 65.1404, 0.3463, 0.3478 by changing the saturation by 10% instead.

 65.1404, 0.3463,
0.3478

 65.1404, 0.3463,
0.3478


443.2963, 0.3304,
0.3391

 47.5749, 0.3500,
0.3498


 112.2517, 0.3407,
0.3448

 33.4904, 0.3547,
0.3522

142.5663, 0.3385,
0.3436

 22.5024, 0.3607,
0.3553


177.8994, 0.3367,
0.3426

 14.2265, 0.3687,
0.3593

218.6354, 0.3351,
0.3417

 8.2784, 0.3799,
0.3646

265.1587, 0.3337,
0.3410

 4.2736, 0.3964,
0.3722

317.8537, 0.3324,

 1.8278, 0.4234,

0.3403

0.3833

377.1048, 0.3313,
0.3397

0.5044, 0.5610,
0.4390

0.0000, 0.0000,
0.0000

65.1404, 0.3463,
0.3478

65.1404, 0.3463,
0.3478

57.6404, 0.3684,
0.3584

73.4344, 0.3273,
0.3376

50.9013, 0.3938,
0.3690

82.5369, 0.3110,
0.3280

44.9003, 0.4226,
0.3790

92.2198, 0.2993,
0.3229

39.6103, 0.4541,
0.3874

96.0634, 0.2993,
0.3290

■ 35.0019, 0.4871,
0.3929

■ 31.0436, 0.5197,
0.3944

■ 27.7004, 0.5492,
0.3907

■ 24.9288, 0.5734,
0.3820

■ 24.6517, 0.5759,
0.3809

Harmonies

Analogous

The Analogous color harmony consists of three colors that are next to each other on the color wheel.



65.1404, 0.3442, 0.3340



65.1404, 0.3463, 0.3478



65.1404, 0.3392, 0.3571

Triad

The Triadic color harmony groups three colors that are evenly spaced from another and form a triangle on the color wheel.



65.1404, 0.3463, 0.3478



65.1404, 0.2922, 0.3385



65.1404, 0.2999, 0.3009

Complementary

The Complementary color scheme is a pair of colors which are on the opposite of each other on the color wheel.



65.1404, 0.3463, 0.3478



65.8032, 0.2833, 0.3094

Split Complementary

Split-complementary colors differ from the complementary color scheme. The scheme consists of three colors, the original color and two neighbors of the complement color.



65.1404, 0.2866, 0.3013



65.1404, 0.3463, 0.3478



65.1404, 0.2823, 0.3226

Square

The Square scheme is like the rectangle color scheme, but the four colors are evenly spaced on the color wheel.



65.1404, 0.3463, 0.3478



65.1404, 0.3078, 0.3520



65.1404, 0.2802, 0.3091



65.1404, 0.3170, 0.3075

Rectangle

The Rectangle color scheme consists of four colors that form a rectangle on the color wheel.



65.1404, 0.3463, 0.3478



65.1404, 0.3303, 0.3592



65.1404, 0.2802, 0.3091



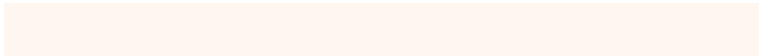
65.1404, 0.2948, 0.3002

Sweetspot

The Sweet Spot groups the original color and five complimentary colors.



65.1433, 0.3463, 0.3478



93.2117, 0.3224, 0.3348



58.6791, 0.3278, 0.2996



19.7977, 0.3235, 0.3354



0.0000, 0.0000, 0.0000



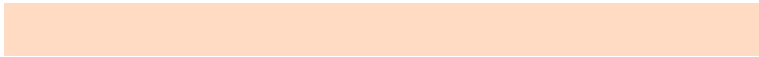
21.4041, 0.3127, 0.3290

Same Dimension

The Same Dimension uses a secret algorithm to generate beautiful new colors.



65.1433, 0.3463, 0.3478



75.9394, 0.3552, 0.3523



76.4093, 0.3421, 0.3708



16.0091, 0.3283, 0.3382



14.2111, 0.5731, 0.3831



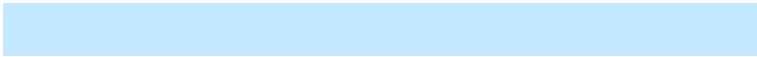
1.2975, 0.5474, 0.4035

Inverse Universe

The Inverse Universe completely reimagines the original color for something new.



65.8032, 0.2833, 0.3094



76.8972, 0.2766, 0.3045



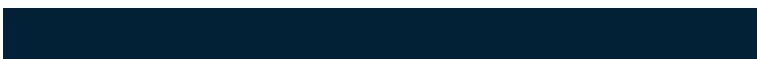
55.3400, 0.2818, 0.2835



16.0870, 0.2981, 0.3197



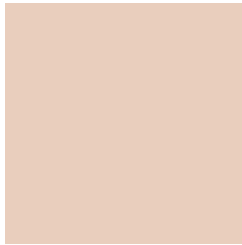
14.7164, 0.1881, 0.1973



1.3412, 0.1938, 0.2175

Previews

White Background



This preview shows how the Yxy color 65.1404, 0.3463, 0.3478 looks on a white background.

Color Contrast Check

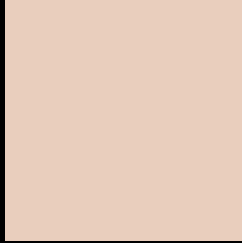
Large Text (above 18pt) WCAG AA × Fail

Any Text WCAG AA × Fail

Large Text (above 18pt) WCAG AAA × Fail

Any Text WCAG AAA × Fail

Black Background



This preview shows how the Yxy color 65.1404, 0.3463, 0.3478 looks on a black background.

Color Contrast Check

Large Text (above 18pt) WCAG AA ✓ Pass

Any Text WCAG AA ✓ Pass

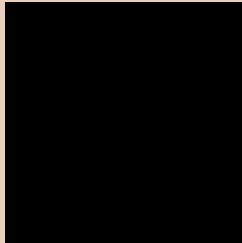
Large Text (above 18pt) WCAG AAA ✓ Pass

Any Text WCAG AAA ✓ Pass

If you want to check with other color combinations, try the [Color Contrast Checker](#).

Yxy 65.1404, 0.3463, 0.3478

Background



This preview shows how black text looks on a background with the Yxy color 65.1404, 0.3463, 0.3478.



This preview shows how white text looks on a background with the Yxy color 65.1404, 0.3463, 0.3478.

Color Blindness Simulation

Color vision deficiency is a very complex topic, and I could not describe the different causes any better than Wikipedia does, so if you want to learn more, you should check out their [article about color blindness](#).

Dichromacy



Original Color

65.1404, 0.3463, 0.3478

Protanopia

65.0704, 0.3338, 0.3506

Deuteranopia

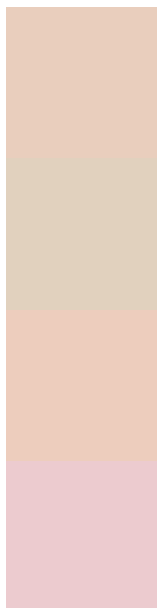
65.2106, 0.3515, 0.3454



Tritanopia

65.3075, 0.3282, 0.3120

Trichromacy



Original Color

65.1404, 0.3463, 0.3478

Protanomaly

65.3262, 0.3386, 0.3503

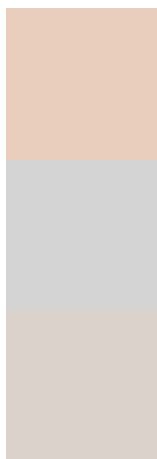
Deuteranomaly

65.3413, 0.3497, 0.3465

Tritanomaly

65.0497, 0.3355, 0.3248

Monochromacy



Original Color

65.1404, 0.3463, 0.3478

Achromatopsia

65.8375, 0.3127, 0.3290

Achromatomaly

65.6685, 0.3245, 0.3358

CSS Examples

Text

The CSS property to change the color of the text to Yxy 65.1404, 0.3463, 0.3478 is called "color". The color property can be set on classes, ids or directly on the HTML element.

This example shows how text in the color `rgb(233, 206, 189)` looks like.

```
.text, #text, p{  
    color:rgb(233, 206, 189)  
}
```

If you want to add a text shadow in that color use the text-shadow property, you can generate a text shadow directly with our [CSS Text Shadow Generator](#).

Here you see how black text with a 4 pixel rgb(233, 206, 189) colored shadow looks like.

```
.shadow{ text-shadow: 4px 4px 2px rgb(233, 206, 189) }
```

Border

The CSS property to change the border of an element to Yxy 65.1404, 0.3463, 0.3478 is called "border". The border property can be set on classes, ids or directly on the HTML element.

This example shows the color as border, it can be applied via the CSS property "border" or "border-color".

```
.border, #border, table{ border:4px solid rgb(233, 206, 189) }
```

If only the border color should be changed use the property `border-color`.

```
.border{ border-color:rgb(233, 206, 189) }
```

If you want to add a box shadow in that color use:

Here you see how a box with a 4 pixel `rgb(233, 206, 189)` colored shadow looks like.

```
.boxshadow{ -moz-box-shadow:4px 4px 4px  
4px rgb(233, 206, 189); -webkit-box-  
shadow:4px 4px 4px 4px rgb(233, 206, 189);  
box-shadow:4px 4px 4px 4px rgb(233, 206,  
189) }
```


Background

The CSS property to change the background color of an element to Yxy 65.1404, 0.3463, 0.3478 is called "background". The background property can be set on classes, ids or directly on the HTML element.

```
.background, #background, body{  
background: rgb(233, 206, 189) }
```

If only the background color should be changed can be used:

```
.background{ background-color: rgb(233,  
206, 189) }
```

This example shows the color as background, it is applied via the CSS property "background".

To optimize and compress your CSS code, you can use our [online CSS compressor and optimizer](#) based on csstidy. If you want to create a linear or radial gradient as background or border, check our [CSS Gradient Generator](#).

Hey! You found this booklet interesting? Support Converting Colors with the new Membership Option!

The pro membership hides all ads, plus gives you double the colors in the color bucket, and more awesome pro features!

[Learn more, Memberships starting at \\$2.50/m!](#)

**Follow me
on Twitter!**

@ConvertingColor