

Converting Colors

Yxy(65.4914, 0.3512, 0.3529)

Have a look what the booklet for
Yxy(65.4914, 0.3512, 0.3529)
contains.

Yxy(65.3076, 0.3509, 0.3521)	3
Conversions	4
Details	6
Harmonies	12
Previews	24
Color Blindness Simulation	27
CSS Examples	30

Color

Yxy(65.3076, 0.3509, 0.3521)

Conversions

Conversions Part 1

Format	Color
Hex	EBCEB9
RGB	235, 206, 185
RGB Percent	92%, 81%, 73%
CMY	0.0785, 0.1921, 0.2744
CMYK	0.00, 0.12, 0.21, 0.08
HSL	25°, 55%, 82%
HSV	25°, 21%, 92%
XYZ	65.0850, 65.3076, 55.0876
YIQ	212.2770, 24.0250, -0.3830

Conversions

Conversions Part 2

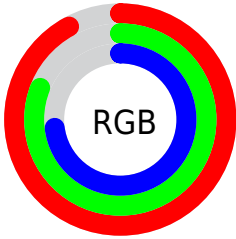
Format	Color
R _Y B	235, 221, 185
Decimal	15453881
CIE Lab	84.64, 6.91, 14.16
CIE LCh	85, 15.750, 63.992
Yxy	65.3076, 0.3509, 0.3521
Android (android.graphics.Color)	4293643961 (0xFFEBCEB9)
YUV	212.2770, -13.4476, 19.9281
Hunter-Lab	80.8131, 2.3368, 16.1531

Details

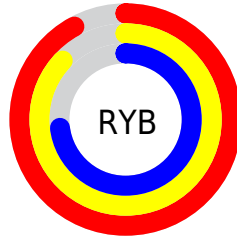
The Yxy color **65.3076, 0.3509, 0.3521** is a light color, and the websafe version is hex **FFCCCC**. A complement of this color would be **64.4013, 0.2794, 0.3047**, and the grayscale version is **66.1125, 0.3127, 0.3290**.

A 20% lighter version of the original color is **99.1309, 0.3209, 0.3425**, and **33.7061, 0.3606, 0.3577** is the 20% darker color. If you saturate the color by 10%, you get **58.1197, 0.3733, 0.3636**, and if you desaturate by 10%, it is **73.2341, 0.3314, 0.3409**.

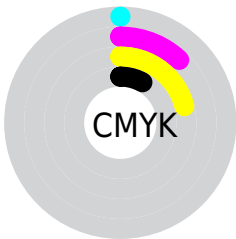
Distribution



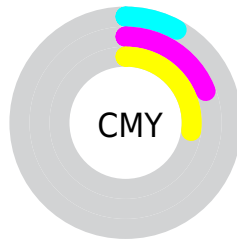
- Red (92%)
- Green (81%)
- Blue (73%)



- Red (92%)
- Yellow (87%)
- Blue (73%)



- Cyan (0%)
- Magenta (12%)
- Yellow (21%)
- Black (8%)




- Cyan (8%)
- Magenta (19%)
- Yellow (27%)

Brightness & Saturation Gradients


These gradients show how the Yxy color 65.3076, 0.3509, 0.3521 changes by changing the brightness by 10 percent. The first figure shows a shift by +10% for each color and the second figure -10%.


Similar to the brightness gradients but the following saturation gradients show a change of the Yxy color 65.3076, 0.3509, 0.3521 by changing the saturation by 10% instead.

 65.3076, 0.3509,
0.3521

 65.3076, 0.3509,
0.3521

443.8965, 0.3328,
0.3414

 47.7105, 0.3551,
0.3545


 112.4920, 0.3445,
0.3484

 33.5977, 0.3604,
0.3575


142.8481, 0.3421,
0.3470

 22.5847, 0.3672,
0.3612


178.2260, 0.3400,
0.3457

 14.2872, 0.3763,
0.3661

219.0101, 0.3381,
0.3447

 8.3207, 0.3888,
0.3726

265.5848, 0.3366,
0.3437

 4.3008, 0.4073,
0.3816

318.3346, 0.3351,

 1.8432, 0.4381,

0.3429

0.3955

377.6436, 0.3339,
0.3421

0.5139, 0.5611,
0.4389

0.0000, 0.0000,
0.0000

65.3076, 0.3509,
0.3521

65.3076, 0.3509,
0.3521

58.1197, 0.3733,
0.3636

73.2341, 0.3314,
0.3409

51.6392, 0.3988,
0.3751

81.9116, 0.3147,
0.3303

45.8454, 0.4273,
0.3856

91.3302, 0.3005,
0.3209

40.7129, 0.4579,
0.3942

96.3979, 0.3005,
0.3290

■ 36.2149, 0.4895,
0.3996

■ 32.3218, 0.5199,
0.4006

■ 29.0009, 0.5468,
0.3962

■ 26.5302, 0.5664,
0.3884

Harmonies

Analogous

The Analogous color harmony consists of three colors that are next to each other on the color wheel.



65.3076, 0.3498, 0.3367



65.3076, 0.3509, 0.3521



65.3076, 0.3415, 0.3620

Triad

The Triadic color harmony groups three colors that are evenly spaced from another and form a triangle on the color wheel.



65.3076, 0.3509, 0.3521



65.3076, 0.2874, 0.3378



65.3076, 0.3002, 0.2973

Complementary

The Complementary color scheme is a pair of colors which are on the opposite of each other on the color wheel.



65.3076, 0.3509, 0.3521



64.4013, 0.2794, 0.3047

Split Complementary

Split-complementary colors differ from the complementary color scheme. The scheme consists of three colors, the original color and two neighbors of the complement color.



65.3076, 0.2842, 0.2967



65.3076, 0.3509, 0.3521



65.3076, 0.2770, 0.3195

Square

The Square scheme is like the rectangle color scheme, but the four colors are evenly spaced on the color wheel.



65.3076, 0.3509, 0.3521



65.3076, 0.3046, 0.3541



65.3076, 0.2759, 0.3046



65.3076, 0.3200, 0.3057

Rectangle

The Rectangle color scheme consists of four colors that form a rectangle on the color wheel.



65.3076, 0.3509, 0.3521



65.3076, 0.3307, 0.3638



65.3076, 0.2759, 0.3046



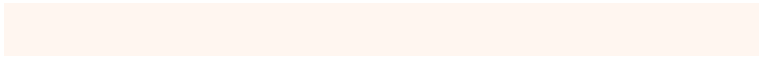
65.3076, 0.2942, 0.2962

Sweetspot

The Sweet Spot groups the original color and five complimentary colors.



65.3106, 0.3509, 0.3521



93.5232, 0.3223, 0.3353



57.2300, 0.3314, 0.2974



19.8712, 0.3234, 0.3360



0.0000, 0.0000, 0.0000



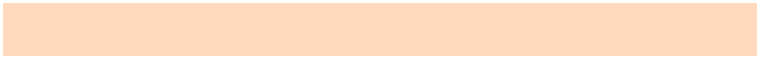
21.4041, 0.3127, 0.3290

Same Dimension

The Same Dimension uses a secret algorithm to generate beautiful new colors.



65.3106, 0.3509, 0.3521



74.3187, 0.3614, 0.3577



78.2088, 0.3456, 0.3779



16.0942, 0.3282, 0.3389



15.0085, 0.5637, 0.3906



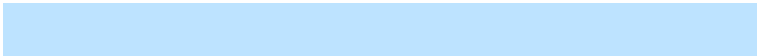
1.3650, 0.5391, 0.4102

Inverse Universe

The Inverse Universe completely reimagines the original color for something new.



64.4013, 0.2794, 0.3047



73.0169, 0.2717, 0.2984



52.7905, 0.2773, 0.2750



15.9998, 0.2981, 0.3189



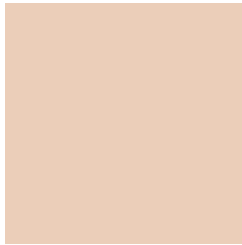
13.4371, 0.1849, 0.1854



1.2447, 0.1909, 0.2072

Previews

White Background



This preview shows how the Yxy color 65.3076, 0.3509, 0.3521 looks on a white background.

Color Contrast Check

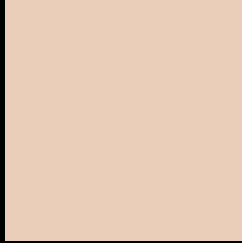
Large Text (above 18pt) WCAG AA × Fail

Any Text WCAG AA × Fail

Large Text (above 18pt) WCAG AAA × Fail

Any Text WCAG AAA × Fail

Black Background



This preview shows how the Yxy color 65.3076, 0.3509, 0.3521 looks on a black background.

Color Contrast Check

Large Text (above 18pt) WCAG AA ✓ Pass

Any Text WCAG AA ✓ Pass

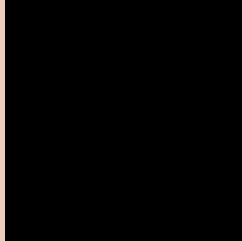
Large Text (above 18pt) WCAG AAA ✓ Pass

Any Text WCAG AAA ✓ Pass

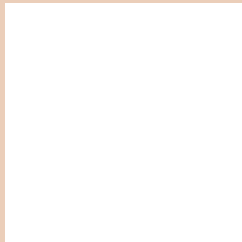
If you want to check with other color combinations, try the [Color Contrast Checker](#).

Yxy 65.3076, 0.3509, 0.3521

Background



This preview shows how black text looks on a background with the Yxy color 65.3076, 0.3509, 0.3521.



This preview shows how white text looks on a background with the Yxy color 65.3076, 0.3509, 0.3521.

Color Blindness Simulation

Color vision deficiency is a very complex topic, and I could not describe the different causes any better than Wikipedia does, so if you want to learn more, you should check out their [article about color blindness](#).

Dichromacy



Original Color

65.3076, 0.3509, 0.3521

Protanopia

65.5485, 0.3374, 0.3562

Deuteranopia

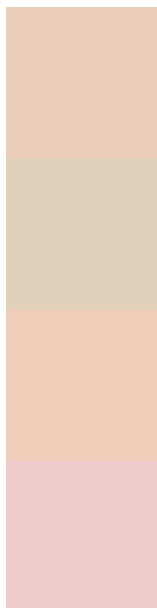
65.3893, 0.3562, 0.3496



Tritanopia

65.1338, 0.3306, 0.3121

Trichromacy



Original Color

65.3076, 0.3509, 0.3521

Protanomaly

65.3148, 0.3424, 0.3548

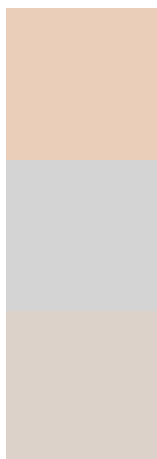
Deuteranomaly

65.5161, 0.3544, 0.3508

Tritanomaly

65.2968, 0.3386, 0.3269

Monochromacy



Original Color

65.3076, 0.3509, 0.3521

Achromatopsia

65.8375, 0.3127, 0.3290

Achromatomaly

65.5731, 0.3259, 0.3380

CSS Examples

Text

The CSS property to change the color of the text to Yxy 65.3076, 0.3509, 0.3521 is called "color". The color property can be set on classes, ids or directly on the HTML element.

This example shows how text in the color `rgb(235, 206, 185)` looks like.

```
.text, #text, p{  
    color:rgb(235, 206, 185)  
}
```

If you want to add a text shadow in that color use the text-shadow property, you can generate a text shadow directly with our [CSS Text Shadow Generator](#).

Here you see how black text with a 4 pixel rgb(235, 206, 185) colored shadow looks like.

```
.shadow{ text-shadow: 4px 4px 2px rgb(235, 206, 185) }
```

Border

The CSS property to change the border of an element to Yxy 65.3076, 0.3509, 0.3521 is called "border". The border property can be set on classes, ids or directly on the HTML element.

This example shows the color as border, it can be applied via the CSS property "border" or "border-color".

```
.border, #border, table{ border:4px solid rgb(235, 206, 185) }
```

If only the border color should be changed use the property `border-color`.

```
.border{ border-color:rgb(235, 206, 185) }
```

If you want to add a box shadow in that color use:

Here you see how a box with a 4 pixel `rgb(235, 206, 185)` colored shadow looks like.

```
.boxshadow{ -moz-box-shadow:4px 4px 4px  
4px rgb(235, 206, 185); -webkit-box-  
shadow:4px 4px 4px 4px rgb(235, 206, 185);  
box-shadow:4px 4px 4px 4px rgb(235, 206,  
185) }
```


Background

The CSS property to change the background color of an element to Yxy 65.3076, 0.3509, 0.3521 is called "background". The background property can be set on classes, ids or directly on the HTML element.

```
.background, #background, body{  
background: rgb(235, 206, 185) }
```

If only the background color should be changed can be used:

```
.background{ background-color: rgb(235,  
206, 185) }
```

This example shows the color as background, it is applied via the CSS property "background".

To optimize and compress your CSS code, you can use our [online CSS compressor and optimizer](#) based on csstidy. If you want to create a linear or radial gradient as background or border, check our [CSS Gradient Generator](#).

Hey! You found this booklet interesting? Support Converting Colors with the new Membership Option!

The pro membership hides all ads, plus gives you double the colors in the color bucket, and more awesome pro features!

[Learn more, Memberships starting at \\$2.50/m!](#)

**Follow me
on Twitter!**

@ConvertingColor