

Converting Colors

$Yxy(65.5934, 0.3301, 0.3377)$

Have a look what the booklet for
Yxy(65.5934, 0.3301, 0.3377)
contains.

Yxy(65.6653, 0.3298, 0.3380)	3
Conversions	4
Details	6
Harmonies	12
Previews	24
Color Blindness Simulation	27
CSS Examples	30

Color

Yxy(65.6653, 0.3298, 0.3380)

Conversions

Conversions Part 1

Format	Color
Hex	E0D1C9
RGB	224, 209, 201
RGB Percent	88%, 82%, 79%
CMY	0.1217, 0.1803, 0.2119
CMYK	0.00, 0.07, 0.10, 0.12
HSL	21°, 27%, 83%
HSV	21°, 10%, 88%
XYZ	64.0722, 65.6653, 64.5385
YIQ	212.5730, 11.5080, 0.6920

Conversions

Conversions Part 2

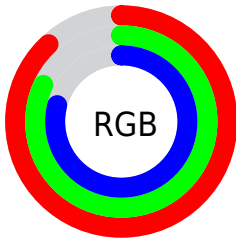
Format	Color
R_{YB}	224, 213, 201
Decimal	14733769
CIE Lab	84.83, 3.82, 5.83
CIE LCh	85, 6.972, 56.800
Yxy	65.6653, 0.3298, 0.3380
Android (android.graphics.Color)	4292923849 (0xFFE0D1C9)
YUV	212.5730, -5.7055, 10.0215
Hunter-Lab	81.0341, -0.6730, 9.5032

Details

The Yxy color **65.6653, 0.3298, 0.3380** is a light color, and the websafe version is hex **CCCCCC**. A complement of this color would be **66.8623, 0.2969, 0.3198**, and the grayscale version is **66.2704, 0.3127, 0.3290**.

A 20% lighter version of the original color is **100.0000, 0.3127, 0.3290**, and **33.9843, 0.3344, 0.3407** is the 20% darker color. If you saturate the color by 10%, you get **57.8693, 0.3494, 0.3473**, and if you desaturate by 10%, it is **74.2735, 0.3131, 0.3292**.

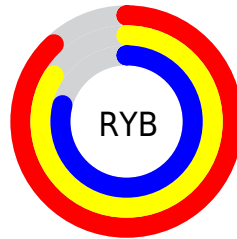
Distribution



Red (88%)

Green (82%)

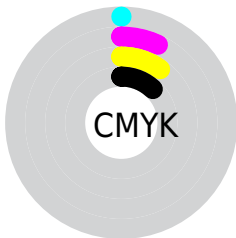
Blue (79%)



Red (88%)

Yellow (84%)

Blue (79%)

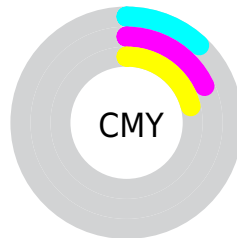


Cyan (0%)

Magenta (7%)

Yellow (10%)

Black (12%)



Cyan (12%)

Magenta (18%)

Yellow (21%)

Brightness & Saturation Gradients

These gradients show how the Yxy color 65.6653, 0.3298, 0.3380 changes by changing the brightness by 10 percent. The first figure shows a shift by +10% for each color and the second figure -10%.

Similar to the brightness gradients but the following saturation gradients show a change of the Yxy color 65.6653, 0.3298, 0.3380 by changing the saturation by 10% instead.

65.6653, 0.3298,
0.3380

65.6653, 0.3298,
0.3380

445.1789, 0.3217,
0.3338

48.0008, 0.3317,
0.3390

113.0058, 0.3270,
0.3365

33.8275, 0.3341,
0.3402

143.4506, 0.3259,
0.3360

22.7611, 0.3371,
0.3417

178.9242, 0.3249,
0.3355

14.4172, 0.3411,
0.3437

219.8110, 0.3241,
0.3351

8.4114, 0.3468,
0.3464

266.4956, 0.3234,
0.3347

4.3593, 0.3552,
0.3504

319.3621, 0.3228,

1.8765, 0.3692,

0.3344

0.3568

378.7951, 0.3222,
0.3341

0.5342, 0.4591,
0.4081

0.0000, 0.0000,
0.0000

65.6653, 0.3298,
0.3380

65.6653, 0.3298,
0.3380

57.8693, 0.3494,
0.3473

74.2735, 0.3131,
0.3292

50.8527, 0.3724,
0.3570

83.7081, 0.2990,
0.3211

44.5933, 0.3990,
0.3666

93.1171, 0.2940,
0.3266

39.0643, 0.4291,
0.3754

94.5814, 0.2940,
0.3289

■ 34.2375, 0.4623,
0.3826

■ 30.0823, 0.4971,
0.3869

■ 26.5657, 0.5312,
0.3871

■ 23.6513, 0.5615,
0.3822

■ 21.3465, 0.5855,
0.3733

Harmonies

Analogous

The Analogous color harmony consists of three colors that are next to each other on the color wheel.



65.6653, 0.3281, 0.3308



65.6653, 0.3298, 0.3380



65.6653, 0.3268, 0.3429

Triad

The Triadic color harmony groups three colors that are evenly spaced from another and form a triangle on the color wheel.



65.6653, 0.3298, 0.3380



65.6653, 0.3031, 0.3348



65.6653, 0.3053, 0.3143

Complementary

The Complementary color scheme is a pair of colors which are on the opposite of each other on the color wheel.



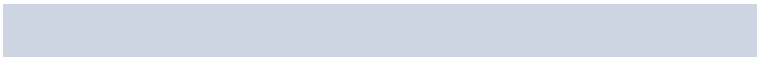
65.6653, 0.3298, 0.3380



66.8623, 0.2969, 0.3198

Split Complementary

Split-complementary colors differ from the complementary color scheme. The scheme consists of three colors, the original color and two neighbors of the complement color.



65.6653, 0.2988, 0.3152



65.6653, 0.3298, 0.3380



65.6653, 0.2975, 0.3269

Square

The Square scheme is like the rectangle color scheme, but the four colors are evenly spaced on the color wheel.



65.6653, 0.3298, 0.3380



65.6653, 0.3114, 0.3411



65.6653, 0.2959, 0.3197



65.6653, 0.3139, 0.3173

Rectangle

The Rectangle color scheme consists of four colors that form a rectangle on the color wheel.



65.6653, 0.3298, 0.3380



65.6653, 0.3226, 0.3442



65.6653, 0.2959, 0.3197



65.6653, 0.3028, 0.3142

Sweetspot

The Sweet Spot groups the original color and five complimentary colors.



65.6682, 0.3298, 0.3380



96.3855, 0.3174, 0.3316



62.5557, 0.3197, 0.3125



20.4274, 0.3188, 0.3323



0.0000, 0.0000, 0.0000



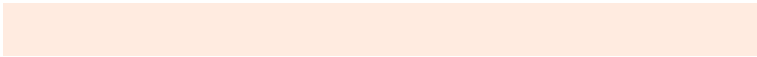
21.4041, 0.3127, 0.3290

Same Dimension

The Same Dimension uses a secret algorithm to generate beautiful new colors.



65.6682, 0.3298, 0.3380



86.1438, 0.3331, 0.3397



71.5143, 0.3284, 0.3505



14.4814, 0.3283, 0.3373



12.6249, 0.5827, 0.3755



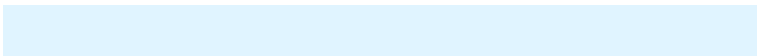
1.0390, 0.5531, 0.3990

Inverse Universe

The Inverse Universe completely reimagines the original color for something new.



66.8623, 0.2969, 0.3198



88.0067, 0.2940, 0.3181



61.1800, 0.2967, 0.3065



14.7226, 0.2982, 0.3206



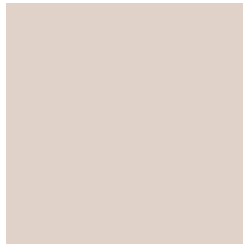
15.2490, 0.1919, 0.2106



1.2229, 0.1975, 0.2310

Previews

White Background



This preview shows how the Yxy color 65.6653, 0.3298, 0.3380 looks on a white background.

Color Contrast Check

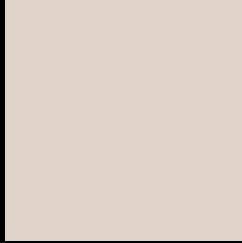
Large Text (above 18pt) WCAG AA × Fail

Any Text WCAG AA × Fail

Large Text (above 18pt) WCAG AAA × Fail

Any Text WCAG AAA × Fail

Black Background



This preview shows how the Yxy color 65.6653, 0.3298, 0.3380 looks on a black background.

Color Contrast Check

Large Text (above 18pt) WCAG AA ✓ Pass

Any Text WCAG AA ✓ Pass

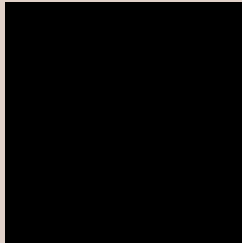
Large Text (above 18pt) WCAG AAA ✓ Pass

Any Text WCAG AAA ✓ Pass

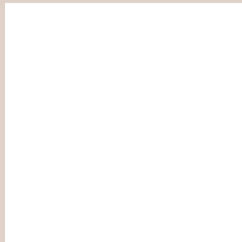
If you want to check with other color combinations, try the [Color Contrast Checker](#).

Yxy 65.6653, 0.3298, 0.3380

Background



This preview shows how black text looks on a background with the Yxy color 65.6653, 0.3298, 0.3380.

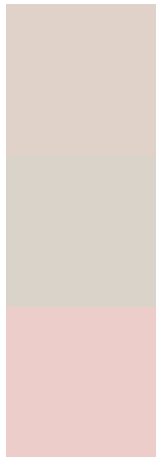


This preview shows how white text looks on a background with the Yxy color 65.6653, 0.3298, 0.3380.

Color Blindness Simulation

Color vision deficiency is a very complex topic, and I could not describe the different causes any better than Wikipedia does, so if you want to learn more, you should check out their [article about color blindness](#).

Dichromacy



Original Color

65.6653, 0.3298, 0.3380

Protanopia

65.7582, 0.3243, 0.3392

Deuteranopia

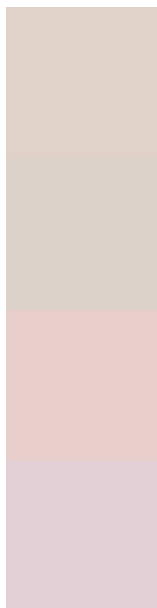
65.7598, 0.3390, 0.3323



Tritanopia

65.7474, 0.3173, 0.3117

Trichromacy



Original Color

65.6653, 0.3298, 0.3380

Protanomaly

65.5731, 0.3259, 0.3380

Deuteranomaly

65.5627, 0.3357, 0.3334

Tritanomaly

65.6494, 0.3222, 0.3214

Monochromacy



Original Color

65.6653, 0.3298, 0.3380

Achromatopsia

66.5387, 0.3127, 0.3290

Achromatomaly

66.4421, 0.3185, 0.3324

CSS Examples

Text

The CSS property to change the color of the text to Yxy 65.6653, 0.3298, 0.3380 is called "color". The color property can be set on classes, ids or directly on the HTML element.

This example shows how text in the color `rgb(224, 209, 201)` looks like.

```
.text, #text, p{  
    color:rgb(224, 209, 201)  
}
```

If you want to add a text shadow in that color use the text-shadow property, you can generate a text shadow directly with our [CSS Text Shadow Generator](#).

Here you see how black text with a 4 pixel rgb(224, 209, 201) colored shadow looks like.

```
.shadow{ text-shadow: 4px 4px 2px rgb(224, 209, 201) }
```

Border

The CSS property to change the border of an element to Yxy 65.6653, 0.3298, 0.3380 is called "border". The border property can be set on classes, ids or directly on the HTML element.

This example shows the color as border, it can be applied via the CSS property "border" or "border-color".

```
.border, #border, table{ border:4px solid rgb(224, 209, 201) }
```

If only the border color should be changed use the property `border-color`.

```
.border{ border-color:rgb(224, 209, 201) }
```

If you want to add a box shadow in that color use:

Here you see how a box with a 4 pixel `rgb(224, 209, 201)` colored shadow looks like.

```
.boxshadow{ -moz-box-shadow:4px 4px 4px  
4px rgb(224, 209, 201); -webkit-box-  
shadow:4px 4px 4px 4px rgb(224, 209, 201);  
box-shadow:4px 4px 4px 4px rgb(224, 209,  
201) }
```


Background

The CSS property to change the background color of an element to Yxy 65.6653, 0.3298, 0.3380 is called "background". The background property can be set on classes, ids or directly on the HTML element.

```
.background, #background, body{  
background: rgb(224, 209, 201) }
```

If only the background color should be changed can be used:

```
.background{ background-color: rgb(224,  
209, 201) }
```

This example shows the color as background, it is applied via the CSS property "background".

To optimize and compress your CSS code, you can use our [online CSS compressor and optimizer](#) based on csstidy. If you want to create a linear or radial gradient as background or border, check our [CSS Gradient Generator](#).

Hey! You found this booklet interesting? Support Converting Colors with the new Membership Option!

The pro membership hides all ads, plus gives you double the colors in the color bucket, and more awesome pro features!

[Learn more, Memberships starting at \\$2.50/m!](#)

**Follow me
on Twitter!**

@ConvertingColor