

# Converting Colors

$Yxy(65.7438, 0.3324, 0.3387)$

Have a look what the booklet for  
Yxy(65.7438, 0.3324, 0.3387)  
contains.

<b>Yxy(65.9398, 0.3321, 0.3390)</b> .....	3
<b>Conversions</b> .....	4
<b>Details</b> .....	6
<b>Harmonies</b> .....	12
<b>Previews</b> .....	24
<b>Color Blindness Simulation</b> .....	27
<b>CSS Examples</b> .....	30

# Color

**Yxy(65.9398, 0.3321, 0.3390)**

# Conversions

## Conversions Part 1

Format	Color
Hex	E2D1C8
RGB	226, 209, 200
RGB Percent	89%, 82%, 78%
CMY	0.1136, 0.1804, 0.2156
CMYK	0.00, 0.08, 0.12, 0.11
HSL	21°, 31%, 84%
HSV	21°, 12%, 89%
XYZ	64.5977, 65.9398, 63.9752
YIQ	213.0570, 13.0210, 0.8050

# Conversions

## Conversions Part 2

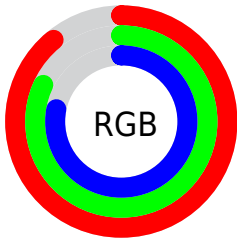
Format	Color
R <sub>Y</sub> B	226, 214, 200
Decimal	14864840
CIE Lab	84.97, 4.41, 6.57
CIE LCh	85, 7.909, 56.125
Yxy	65.9398, 0.3321, 0.3390
Android (android.graphics.Color)	4293054920 (0xFFE2D1C8)
YUV	213.0570, -6.4371, 11.3510
Hunter-Lab	81.2033, -0.1082, 10.1313

# Details

The Yxy color **65.9398, 0.3321, 0.3390** is a light color, and the websafe version is hex **CCCCCC**. A complement of this color would be **67.4254, 0.2949, 0.3188**, and the grayscale version is **66.6213, 0.3127, 0.3290**.

A 20% lighter version of the original color is **100.0000, 0.3127, 0.3290**, and **34.1759, 0.3374, 0.3421** is the 20% darker color. If you saturate the color by 10%, you get **58.0342, 0.3522, 0.3483**, and if you desaturate by 10%, it is **74.6822, 0.3151, 0.3303**.

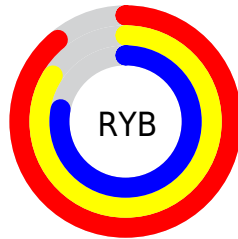
# Distribution



Red (89%)

Green (82%)

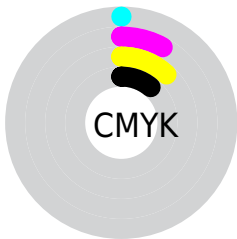
Blue (78%)



Red (89%)

Yellow (84%)

Blue (78%)

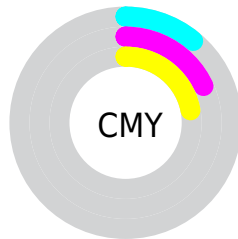


Cyan (0%)

Magenta (8%)

Yellow (12%)

Black (11%)



Cyan (11%)

Magenta (18%)


Yellow (22%)


# Brightness & Saturation Gradients

These gradients show how the Yxy color 65.9398, 0.3321, 0.3390 changes by changing the brightness by 10 percent. The first figure shows a shift by +10% for each color and the second figure -10%.


Similar to the brightness gradients but the following saturation gradients show a change of the Yxy color 65.9398, 0.3321, 0.3390 by changing the saturation by 10% instead.



 65.9398, 0.3321,  
0.3390

 65.9398, 0.3321,  
0.3390


446.1616, 0.3229,  
0.3344

 48.2235, 0.3342,  
0.3401


113.3999, 0.3289,  
0.3374

 34.0039, 0.3369,  
0.3414

143.9126, 0.3276,  
0.3368

 22.8966, 0.3404,  
0.3431


179.4595, 0.3266,  
0.3362

 14.5172, 0.3450,  
0.3453

220.4250, 0.3257,  
0.3358

 8.4813, 0.3513,  
0.3483

267.1936, 0.3248,  
0.3353

 4.4044, 0.3609,  
0.3526

320.1496, 0.3241,

 1.9023, 0.3766,

0.3350

0.3594

379.6775, 0.3235,  
0.3346

0.5497, 0.4776,  
0.4167

0.0000, 0.0000,  
0.0000

65.9398, 0.3321,  
0.3390

65.9398, 0.3321,  
0.3390

58.0342, 0.3522,  
0.3483

74.6822, 0.3151,  
0.3303

50.9316, 0.3757,  
0.3578

84.2766, 0.3006,  
0.3222

44.6085, 0.4028,  
0.3672

93.8952, 0.2952,  
0.3273

39.0368, 0.4336,  
0.3758

94.9134, 0.2952,  
0.3289

■ 34.1869, 0.4673,  
0.3826

■ 30.0268, 0.5024,  
0.3863

■ 26.5217, 0.5364,  
0.3858

■ 23.6330, 0.5662,  
0.3802

■ 21.6251, 0.5869,  
0.3722

# Harmonies

## Analogous

The Analogous color harmony consists of three colors that are next to each other on the color wheel.



65.9398, 0.3301, 0.3308



65.9398, 0.3321, 0.3390



65.9398, 0.3288, 0.3447

# Triad

The Triadic color harmony groups three colors that are evenly spaced from another and form a triangle on the color wheel.



65.9398, 0.3321, 0.3390



65.9398, 0.3021, 0.3357



65.9398, 0.3041, 0.3124

# Complementary

The Complementary color scheme is a pair of colors which are on the opposite of each other on the color wheel.



65.9398, 0.3321, 0.3390



67.4254, 0.2949, 0.3188

# Split Complementary

Split-complementary colors differ from the complementary color scheme. The scheme consists of three colors, the original color and two neighbors of the complement color.



65.9398, 0.2968, 0.3134



65.9398, 0.3321, 0.3390



65.9398, 0.2956, 0.3268

# Square

The Square scheme is like the rectangle color scheme, but the four colors are evenly spaced on the color wheel.



65.9398, 0.3321, 0.3390



65.9398, 0.3114, 0.3429



65.9398, 0.2937, 0.3186



65.9398, 0.3138, 0.3157



# Rectangle

The Rectangle color scheme consists of four colors that form a rectangle on the color wheel.



65.9398, 0.3321, 0.3390



65.9398, 0.3241, 0.3462



65.9398, 0.2937, 0.3186



65.9398, 0.3013, 0.3122

# Sweetspot

The Sweet Spot groups the original color and five complimentary colors.



65.9427, 0.3321, 0.3390



96.3624, 0.3175, 0.3315



62.5176, 0.3203, 0.3100



20.4211, 0.3188, 0.3322



0.0000, 0.0000, 0.0000



21.4041, 0.3127, 0.3290

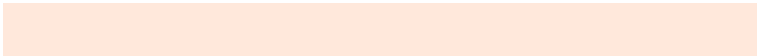


# Same Dimension

The Same Dimension uses a secret algorithm to generate beautiful new colors.



65.9427, 0.3321, 0.3390



83.8914, 0.3370, 0.3414



72.4241, 0.3304, 0.3527



14.4703, 0.3283, 0.3371



12.5334, 0.5840, 0.3745



1.0318, 0.5543, 0.3981

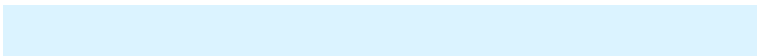


# Inverse Universe

The Inverse Universe completely reimagines the original color for something new.



67.4254, 0.2949, 0.3188



86.2347, 0.2909, 0.3163



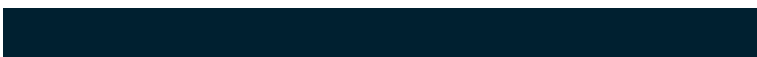
61.1270, 0.2947, 0.3041



14.7341, 0.2982, 0.3207



15.4434, 0.1923, 0.2124



1.2355, 0.1979, 0.2324



# Previews

## White Background



This preview shows how the Yxy color 65.9398, 0.3321, 0.3390 looks on a white background.

## Color Contrast Check

Large Text (above 18pt) WCAG AA × Fail

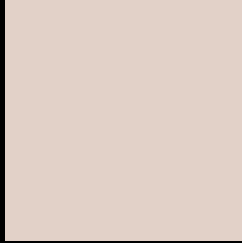
Any Text WCAG AA × Fail

Large Text (above 18pt) WCAG AAA × Fail

Any Text WCAG AAA × Fail



# Black Background



This preview shows how the Yxy color 65.9398, 0.3321, 0.3390 looks on a black background.

## Color Contrast Check

Large Text (above 18pt) WCAG AA ✓ Pass

Any Text WCAG AA ✓ Pass

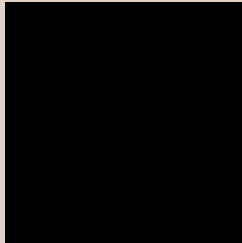
Large Text (above 18pt) WCAG AAA ✓ Pass

Any Text WCAG AAA ✓ Pass

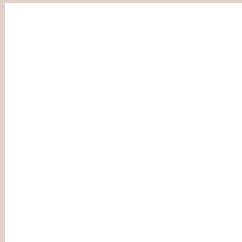
If you want to check with other color combinations, try the [Color Contrast Checker](#).

**Yxy 65.9398, 0.3321, 0.3390**

## **Background**



This preview shows how black text looks on a background with the Yxy color 65.9398, 0.3321, 0.3390.

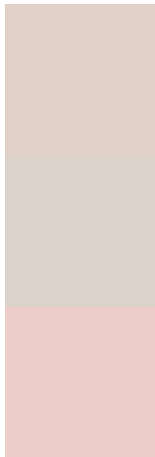


This preview shows how white text looks on a background with the Yxy color 65.9398, 0.3321, 0.3390.

# Color Blindness Simulation

Color vision deficiency is a very complex topic, and I could not describe the different causes any better than Wikipedia does, so if you want to learn more, you should check out their [article about color blindness](#).

## Dichromacy



### Original Color

65.9398, 0.3321, 0.3390

### Protanopia

65.8656, 0.3257, 0.3403

### Deuteranopia

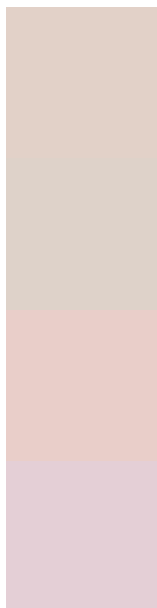
65.8842, 0.3406, 0.3334



## Tritanopia

66.0746, 0.3188, 0.3118

# Trichromacy



## Original Color

65.9398, 0.3321, 0.3390

## Protanomaly

65.8398, 0.3281, 0.3391

## Deuteranomaly

65.6833, 0.3372, 0.3345

## Tritanomaly

65.9747, 0.3237, 0.3214

# Monochromacy



## Original Color

65.9398, 0.3321, 0.3390

## Achromatopsia

66.5387, 0.3127, 0.3290

## Achromatomaly

66.5465, 0.3199, 0.3335

# CSS Examples

## Text

The CSS property to change the color of the text to Yxy 65.9398, 0.3321, 0.3390 is called "color". The color property can be set on classes, ids or directly on the HTML element.

This example shows how text in the color `rgb(226, 209, 200)` looks like.

```
.text, #text, p{  
    color:rgb(226, 209, 200)  
}
```

If you want to add a text shadow in that color use the text-shadow property, you can generate a text shadow directly with our [CSS Text Shadow Generator](#).

Here you see how black text with a 4 pixel rgb(226, 209, 200) colored shadow looks like.

```
.shadow{ text-shadow: 4px 4px 2px rgb(226, 209, 200) }
```

## Border

The CSS property to change the border of an element to Yxy 65.9398, 0.3321, 0.3390 is called "border". The border property can be set on classes, ids or directly on the HTML element.

This example shows the color as border, it can be applied via the CSS property "border" or "border-color".

```
.border, #border, table{ border:4px solid rgb(226, 209, 200) }
```

If only the border color should be changed use the property `border-color`.

```
.border{ border-color:rgb(226, 209, 200) }
```

If you want to add a box shadow in that color use:

Here you see how a box with a 4 pixel `rgb(226, 209, 200)` colored shadow looks like.

```
.boxshadow{ -moz-box-shadow:4px 4px 4px  
4px rgb(226, 209, 200); -webkit-box-  
shadow:4px 4px 4px 4px rgb(226, 209, 200);  
box-shadow:4px 4px 4px 4px rgb(226, 209,  
200) }
```



# Background

The CSS property to change the background color of an element to Yxy 65.9398, 0.3321, 0.3390 is called "background". The background property can be set on classes, ids or directly on the HTML element.

```
.background, #background, body{  
background: rgb(226, 209, 200) }
```

If only the background color should be changed can be used:

```
.background{ background-color: rgb(226,  
209, 200) }
```

This example shows the color as background, it is applied via the CSS property "background".

To optimize and compress your CSS code, you can use our [online CSS compressor and optimizer](#) based on csstidy. If you want to create a linear or radial gradient as background or border, check our [CSS Gradient Generator](#).

Hey! You found this booklet interesting? Support Converting Colors with the new Membership Option!

The pro membership hides all ads, plus gives you double the colors in the color bucket, and more awesome pro features!

**[Learn more, Memberships starting at \\$2.50/m!](#)**

**Follow me  
on Twitter!**

@ConvertingColor