

Converting Colors

$Yxy(65.8088, 0.3462, 0.3474)$

Have a look what the booklet for
Yxy(65.8088, 0.3462, 0.3474)
contains.

Yxy(65.8358, 0.3461, 0.3477)	3
Conversions	4
Details	6
Harmonies	12
Previews	24
Color Blindness Simulation	27
CSS Examples	30

Color

Yxy(65.8358, 0.3461, 0.3477)

Conversions

Conversions Part 1

Format	Color
Hex	EACFBE
RGB	234, 207, 190
RGB Percent	92%, 81%, 75%
CMY	0.0825, 0.1882, 0.2548
CMYK	0.00, 0.12, 0.19, 0.08
HSL	23°, 51%, 83%
HSV	23°, 19%, 92%
XYZ	65.5328, 65.8358, 57.9779
YIQ	213.1350, 21.5490, 0.4370

Conversions

Conversions Part 2

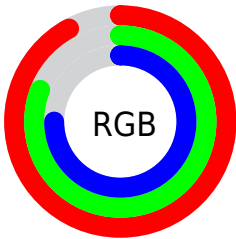
Format	Color
RYB	234, 218, 190
Decimal	15388606
CIELab	84.91, 6.75, 11.88
CIELCh	85, 13.664, 60.405
Yxy	65.8358, 0.3461, 0.3477
Android (android.graphics.Color)	4293578686 (0xFFEACFBE)
YUV	213.1350, -11.4056, 18.2986
Hunter-Lab	81.1393, 2.1734, 14.4319

Details

The Yxy color **65.8358, 0.3461, 0.3477** is a light color, and the websafe version is hex **FFCCCC**. A complement of this color would be **66.5001, 0.2834, 0.3095**, and the grayscale version is **66.7019, 0.3127, 0.3290**.

A 20% lighter version of the original color is **99.4338, 0.3179, 0.3376**, and **34.0536, 0.3542, 0.3520** is the 20% darker color. If you saturate the color by 10%, you get **58.2558, 0.3682, 0.3583**, and if you desaturate by 10%, it is **74.2179, 0.3271, 0.3375**.

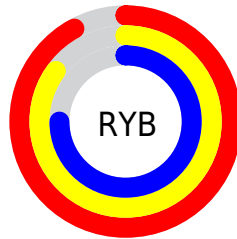
Distribution



Red (92%)

Green (81%)

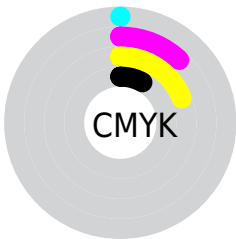
Blue (75%)



Red (92%)

Yellow (85%)

Blue (75%)

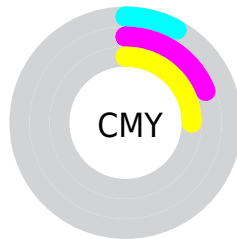


Cyan (0%)

Magenta (12%)

Yellow (19%)

Black (8%)



Cyan (8%)

Magenta (19%)


Yellow (25%)

Brightness & Saturation Gradients


These gradients show how the Yxy color 65.8358, 0.3461, 0.3477 changes by changing the brightness by 10 percent. The first figure shows a shift by +10% for each color and the second figure -10%.


Similar to the brightness gradients but the following saturation gradients show a change of the Yxy color 65.8358, 0.3461, 0.3477 by changing the saturation by 10% instead.


 65.8358, 0.3461,
0.3477

 65.8358, 0.3461,
0.3477


445.7894, 0.3303,
0.3391

 48.1391, 0.3498,
0.3497


 113.2506, 0.3405,
0.3447

 33.9371, 0.3544,
0.3521


143.7376, 0.3384,
0.3436

 22.8453, 0.3604,
0.3551


179.2567, 0.3366,
0.3426

 14.4793, 0.3683,
0.3590

220.1925, 0.3350,
0.3417

 8.4548, 0.3792,
0.3643

266.9292, 0.3336,
0.3409

 4.3873, 0.3955,
0.3718

319.8514, 0.3323,

 1.8925, 0.4218,

0.3402

0.3827

379.3433, 0.3313,
0.3396

0.5439, 0.5562,
0.4438

0.0000, 0.0000,
0.0000

65.8358, 0.3461,
0.3477

65.8358, 0.3461,
0.3477

58.2558, 0.3682,
0.3583

74.2179, 0.3271,
0.3375

51.4444, 0.3936,
0.3689

83.4166, 0.3109,
0.3279

45.3787, 0.4223,
0.3789

93.1172, 0.2999,
0.3241

40.0311, 0.4538,
0.3873

96.2274, 0.2999,
0.3290

■ 35.3722, 0.4868,
0.3929

■ 31.3701, 0.5194,
0.3944

■ 27.9894, 0.5490,
0.3907

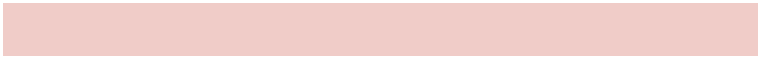
■ 25.1866, 0.5732,
0.3821

■ 24.8811, 0.5759,
0.3809

Harmonies

Analogous

The Analogous color harmony consists of three colors that are next to each other on the color wheel.



65.8358, 0.3440, 0.3340



65.8358, 0.3461, 0.3477



65.8358, 0.3390, 0.3569

Triad

The Triadic color harmony groups three colors that are evenly spaced from another and form a triangle on the color wheel.



65.8358, 0.3461, 0.3477



65.8358, 0.2923, 0.3385



65.8358, 0.3000, 0.3010

Complementary

The Complementary color scheme is a pair of colors which are on the opposite of each other on the color wheel.



65.8358, 0.3461, 0.3477



66.5001, 0.2834, 0.3095

Split Complementary

Split-complementary colors differ from the complementary color scheme. The scheme consists of three colors, the original color and two neighbors of the complement color.



65.8358, 0.2867, 0.3015



65.8358, 0.3461, 0.3477



65.8358, 0.2824, 0.3227

Square

The Square scheme is like the rectangle color scheme, but the four colors are evenly spaced on the color wheel.



65.8358, 0.3461, 0.3477



65.8358, 0.3078, 0.3519



65.8358, 0.2804, 0.3092



65.8358, 0.3170, 0.3076

Rectangle

The Rectangle color scheme consists of four colors that form a rectangle on the color wheel.



65.8358, 0.3461, 0.3477



65.8358, 0.3302, 0.3590



65.8358, 0.2804, 0.3092



65.8358, 0.2950, 0.3003

Sweetspot

The Sweet Spot groups the original color and five complimentary colors.



65.8388, 0.3461, 0.3477



93.2121, 0.3224, 0.3348



59.3380, 0.3277, 0.2997



19.7978, 0.3235, 0.3354



0.0000, 0.0000, 0.0000



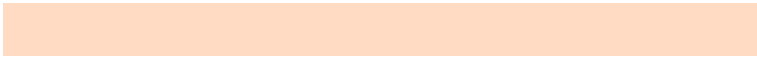
21.4041, 0.3127, 0.3290

Same Dimension

The Same Dimension uses a secret algorithm to generate beautiful new colors.



65.8388, 0.3461, 0.3477



75.9407, 0.3552, 0.3523



77.1575, 0.3419, 0.3706



16.0092, 0.3283, 0.3382



14.2120, 0.5731, 0.3831



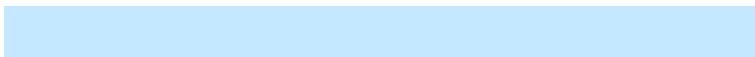
1.2976, 0.5474, 0.4035

Inverse Universe

The Inverse Universe completely reimagines the original color for something new.



66.5001, 0.2834, 0.3095



76.8958, 0.2766, 0.3045



55.9836, 0.2820, 0.2837



16.0869, 0.2981, 0.3197



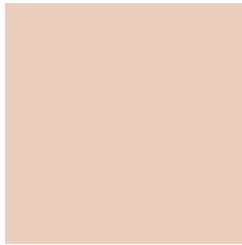
14.7148, 0.1881, 0.1973



1.3411, 0.1938, 0.2175

Previews

White Background



This preview shows how the Yxy color 65.8358, 0.3461, 0.3477 looks on a white background.

Color Contrast Check

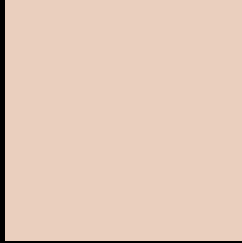
Large Text (above 18pt) WCAG AA × Fail

Any Text WCAG AA × Fail

Large Text (above 18pt) WCAG AAA × Fail

Any Text WCAG AAA × Fail

Black Background



This preview shows how the Yxy color 65.8358, 0.3461, 0.3477 looks on a black background.

Color Contrast Check

Large Text (above 18pt) WCAG AA ✓ Pass

Any Text WCAG AA ✓ Pass

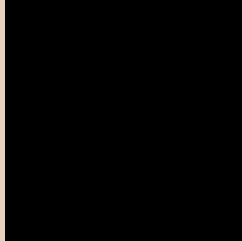
Large Text (above 18pt) WCAG AAA ✓ Pass

Any Text WCAG AAA ✓ Pass

If you want to check with other color combinations, try the [Color Contrast Checker](#).

Yxy 65.8358, 0.3461, 0.3477

Background



This preview shows how black text looks on a background with the Yxy color 65.8358, 0.3461, 0.3477.



This preview shows how white text looks on a background with the Yxy color 65.8358, 0.3461, 0.3477.

Color Blindness Simulation

Color vision deficiency is a very complex topic, and I could not describe the different causes any better than Wikipedia does, so if you want to learn more, you should check out their [article about color blindness](#).

Dichromacy



Original Color

65.8358, 0.3461, 0.3477

Protanopia

65.7665, 0.3337, 0.3505

Deuteranopia

66.1250, 0.3514, 0.3442



Tritanopia

66.0035, 0.3281, 0.3121

Trichromacy



Original Color

65.8358, 0.3461, 0.3477

Protanomaly

66.0235, 0.3385, 0.3502

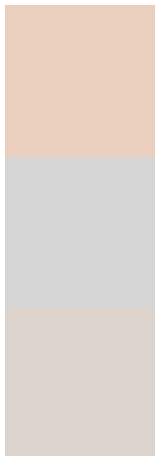
Deuteranomaly

66.0813, 0.3488, 0.3454

Tritanomaly

65.7443, 0.3354, 0.3248

Monochromacy



Original Color

65.8358, 0.3461, 0.3477

Achromatopsia

66.5387, 0.3127, 0.3290

Achromatomaly

66.3685, 0.3244, 0.3357

CSS Examples

Text

The CSS property to change the color of the text to Yxy 65.8358, 0.3461, 0.3477 is called "color". The color property can be set on classes, ids or directly on the HTML element.

This example shows how text in the color `rgb(234, 207, 190)` looks like.

```
.text, #text, p{  
    color:rgb(234, 207, 190)  
}
```

If you want to add a text shadow in that color use the text-shadow property, you can generate a text shadow directly with our [CSS Text Shadow Generator](#).

Here you see how black text with a 4 pixel rgb(234, 207, 190) colored shadow looks like.

```
.shadow{ text-shadow: 4px 4px 2px rgb(234, 207, 190) }
```

Border

The CSS property to change the border of an element to Yxy 65.8358, 0.3461, 0.3477 is called "border". The border property can be set on classes, ids or directly on the HTML element.

This example shows the color as border, it can be applied via the CSS property "border" or "border-color".

```
.border, #border, table{ border:4px solid rgb(234, 207, 190) }
```

If only the border color should be changed use the property border-color.

```
.border{ border-color:rgb(234, 207, 190) }
```

If you want to add a box shadow in that color use:

Here you see how a box with a 4 pixel rgb(234, 207, 190) colored shadow looks like.

```
.boxshadow{ -moz-box-shadow:4px 4px 4px  
4px rgb(234, 207, 190); -webkit-box-  
shadow:4px 4px 4px 4px rgb(234, 207, 190);  
box-shadow:4px 4px 4px 4px rgb(234, 207,  
190) }
```


Background

The CSS property to change the background color of an element to Yxy 65.8358, 0.3461, 0.3477 is called "background". The background property can be set on classes, ids or directly on the HTML element.

```
.background, #background, body{  
background: rgb(234, 207, 190) }
```

If only the background color should be changed can be used:

```
.background{ background-color: rgb(234,  
207, 190) }
```

This example shows the color as background, it is applied via the CSS property "background".

To optimize and compress your CSS code, you can use our [online CSS compressor and optimizer](#) based on csstidy. If you want to create a linear or radial gradient as background or border, check our [CSS Gradient Generator](#).

Hey! You found this booklet interesting? Support Converting Colors with the new Membership Option!

The pro membership hides all ads, plus gives you double the colors in the color bucket, and more awesome pro features!

[Learn more, Memberships starting at \\$2.50/m!](#)

**Follow me
on Twitter!**

@ConvertingColor