

Converting Colors

$Y_{xy}(65.8089, 0.3352, 0.3353)$

Have a look what the booklet for
Yxy(65.8089, 0.3352, 0.3353)
contains.

Yxy(65.8316, 0.3355, 0.3356)	3
Conversions	4
Details	6
Harmonies	12
Previews	24
Color Blindness Simulation	27
CSS Examples	30

Color

Yxy(65.8316, 0.3355, 0.3356)

Conversions

Conversions Part 1

Format	Color
Hex	E7CFC9
RGB	231, 207, 201
RGB Percent	91%, 81%, 79%
CMY	0.0941, 0.1882, 0.2116
CMYK	0.00, 0.10, 0.13, 0.09
HSL	12°, 38%, 85%
HSV	12°, 13%, 91%
XYZ	65.8120, 65.8316, 64.5173
YIQ	213.4920, 16.2300, 3.2220

Conversions

Conversions Part 2

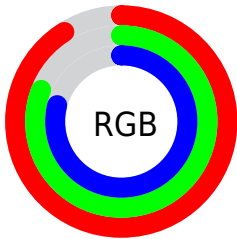
Format	Color
R _Y B	231, 209, 201
Decimal	15192009
CIE Lab	84.91, 7.38, 6.00
CIE LCh	85, 9.514, 39.093
Yxy	65.8316, 0.3355, 0.3356
Android (android.graphics.Color)	4293382089 (0xFFE7CFC9)
YUV	213.4920, -6.1586, 15.3545
Hunter-Lab	81.1367, 2.7966, 9.6501

Details

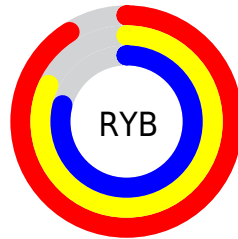
The Yxy color **65.8316, 0.3355, 0.3356** is a light color, and the websafe version is hex **CCCCCC**. A complement of this color would be **72.0555, 0.2928, 0.3223**, and the grayscale version is **66.9226, 0.3127, 0.3290**.

A 20% lighter version of the original color is **100.0000, 0.3127, 0.3290**, and **34.0030, 0.3410, 0.3377** is the 20% darker color. If you saturate the color by 10%, you get **56.3835, 0.3573, 0.3411**, and if you desaturate by 10%, it is **76.4990, 0.3174, 0.3305**.

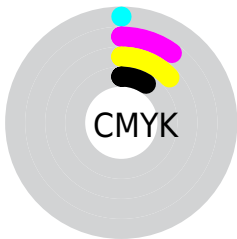
Distribution



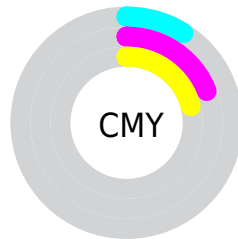
- Red (91%)
- Green (81%)
- Blue (79%)



- Red (91%)
- Yellow (82%)
- Blue (79%)



- Cyan (0%)
- Magenta (10%)
- Yellow (13%)
- Black (9%)





- Cyan (9%)
- Magenta (19%)
- Yellow (21%)

Brightness & Saturation Gradients


These gradients show how the Yxy color 65.8316, 0.3355, 0.3356 changes by changing the brightness by 10 percent. The first figure shows a shift by +10% for each color and the second figure -10%.

Similar to the brightness gradients but the following saturation gradients show a change of the Yxy color 65.8316, 0.3355, 0.3356 by changing the saturation by 10% instead.

 65.8316, 0.3355,
0.3356

 65.8316, 0.3355,
0.3356


445.7744, 0.3247,
0.3326

 48.1357, 0.3380,
0.3363

113.2446, 0.3317,
0.3346

 33.9344, 0.3412,
0.3371


143.7305, 0.3302,
0.3342

 22.8432, 0.3453,
0.3381


179.2485, 0.3290,
0.3338

 14.4778, 0.3507,
0.3395

220.1831, 0.3279,
0.3335

 8.4537, 0.3582,
0.3413

266.9185, 0.3270,
0.3332

 4.3866, 0.3695,
0.3438

319.8393, 0.3261,

 1.8921, 0.3882,

0.3330

0.3474

379.3298, 0.3254,
0.3328

0.5436, 0.4932,
0.3847

0.0000, 0.0000,
0.0000

65.8316, 0.3355,
0.3356

65.8316, 0.3355,
0.3356

56.3835, 0.3573,
0.3411

76.4990, 0.3174,
0.3305

48.1025, 0.3837,
0.3467

88.4182, 0.3025,
0.3257

40.9457, 0.4149,
0.3521

95.7279, 0.2982,
0.3290

34.8640, 0.4511,
0.3568

■ 29.8047, 0.4914,
0.3599

■ 25.7106, 0.5332,
0.3605

■ 22.5184, 0.5723,
0.3578

■ 20.1570, 0.6037,
0.3516

■ 18.9439, 0.6198,
0.3461

Harmonies

Analogous

The Analogous color harmony consists of three colors that are next to each other on the color wheel.



65.8316, 0.3296, 0.3253



65.8316, 0.3355, 0.3356



65.8316, 0.3351, 0.3444

Triad

The Triadic color harmony groups three colors that are evenly spaced from another and form a triangle on the color wheel.



65.8316, 0.3355, 0.3356



65.8316, 0.3060, 0.3425



65.8316, 0.2968, 0.3091

Complementary

The Complementary color scheme is a pair of colors which are on the opposite of each other on the color wheel.



65.8316, 0.3355, 0.3356



72.0555, 0.2928, 0.3223

Split Complementary

Split-complementary colors differ from the complementary color scheme. The scheme consists of three colors, the original color and two neighbors of the complement color.



65.8316, 0.2908, 0.3132



65.8316, 0.3355, 0.3356



65.8316, 0.2960, 0.3325

Square

The Square scheme is like the rectangle color scheme, but the four colors are evenly spaced on the color wheel.



65.8316, 0.3355, 0.3356



65.8316, 0.3179, 0.3487



65.8316, 0.2905, 0.3217



65.8316, 0.3072, 0.3102

Rectangle

The Rectangle color scheme consists of four colors that form a rectangle on the color wheel.



65.8316, 0.3355, 0.3356



65.8316, 0.3314, 0.3483



65.8316, 0.2905, 0.3217



65.8316, 0.2942, 0.3099

Sweetspot

The Sweet Spot groups the original color and five complimentary colors.



65.8345, 0.3355, 0.3356



94.2594, 0.3192, 0.3310



64.2414, 0.3182, 0.3028



19.9504, 0.3205, 0.3314



0.0000, 0.0000, 0.0000



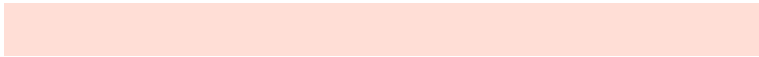
21.4041, 0.3127, 0.3290

Same Dimension

The Same Dimension uses a secret algorithm to generate beautiful new colors.



65.8345, 0.3355, 0.3356



78.5430, 0.3419, 0.3373



73.1878, 0.3334, 0.3512



14.8306, 0.3287, 0.3338



10.7599, 0.6174, 0.3480



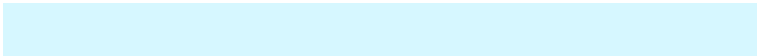
0.9244, 0.5901, 0.3697

Inverse Universe

The Inverse Universe completely reimagines the original color for something new.



72.0555, 0.2928, 0.3223



87.9887, 0.2880, 0.3206



64.5431, 0.2923, 0.3058



15.8228, 0.2981, 0.3242



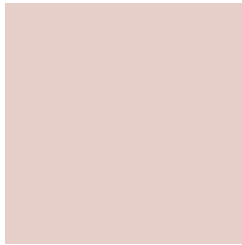
22.8596, 0.2067, 0.2639



1.8137, 0.2096, 0.2745

Previews

White Background



This preview shows how the Yxy color 65.8316, 0.3355, 0.3356 looks on a white background.

Color Contrast Check

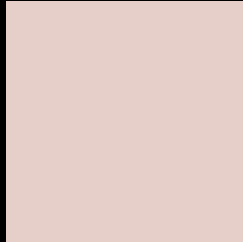
Large Text (above 18pt) WCAG AA × Fail

Any Text WCAG AA × Fail

Large Text (above 18pt) WCAG AAA × Fail

Any Text WCAG AAA × Fail

Black Background



This preview shows how the Yxy color 65.8316, 0.3355, 0.3356 looks on a black background.

Color Contrast Check

Large Text (above 18pt) WCAG AA ✓ Pass

Any Text WCAG AA ✓ Pass

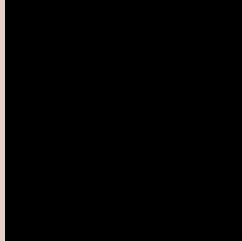
Large Text (above 18pt) WCAG AAA ✓ Pass

Any Text WCAG AAA ✓ Pass

If you want to check with other color combinations, try the [Color Contrast Checker](#).

Yxy 65.8316, 0.3355, 0.3356

Background



This preview shows how black text looks on a background with the Yxy color 65.8316, 0.3355, 0.3356.

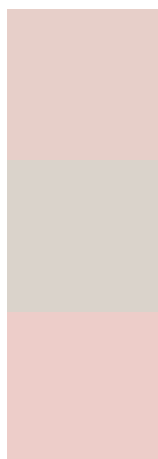


This preview shows how white text looks on a background with the Yxy color 65.8316, 0.3355, 0.3356.

Color Blindness Simulation

Color vision deficiency is a very complex topic, and I could not describe the different causes any better than Wikipedia does, so if you want to learn more, you should check out their [article about color blindness](#).

Dichromacy



Original Color

65.8316, 0.3355, 0.3356

Protanopia

65.8058, 0.3236, 0.3380

Deuteranopia

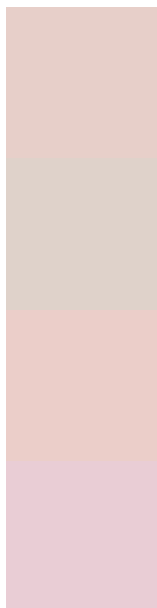
65.8842, 0.3406, 0.3334



Tritanopia

65.8455, 0.3242, 0.3119

Trichromacy



Original Color

65.8316, 0.3355, 0.3356

Protanomaly

66.0454, 0.3282, 0.3380

Deuteranomaly

66.0218, 0.3388, 0.3345

Tritanomaly

65.7904, 0.3285, 0.3204

Monochromacy



Original Color

65.8316, 0.3355, 0.3356

Achromatopsia

66.5387, 0.3127, 0.3290

Achromatomaly

66.4076, 0.3208, 0.3313

CSS Examples

Text

The CSS property to change the color of the text to Yxy 65.8316, 0.3355, 0.3356 is called "color". The color property can be set on classes, ids or directly on the HTML element.

This example shows how text in the color `rgb(231, 207, 201)` looks like.

```
.text, #text, p{  
    color:rgb(231, 207, 201)  
}
```

If you want to add a text shadow in that color use the text-shadow property, you can generate a text shadow directly with our [CSS Text Shadow Generator](#).

Here you see how black text with a 4 pixel rgb(231, 207, 201) colored shadow looks like.

```
.shadow{ text-shadow: 4px 4px 2px rgb(231, 207, 201) }
```

Border

The CSS property to change the border of an element to Yxy 65.8316, 0.3355, 0.3356 is called "border". The border property can be set on classes, ids or directly on the HTML element.

This example shows the color as border, it can be applied via the CSS property "border" or "border-color".

```
.border, #border, table{ border:4px solid rgb(231, 207, 201) }
```

If only the border color should be changed use the property `border-color`.

```
.border{ border-color:rgb(231, 207, 201) }
```

If you want to add a box shadow in that color use:

Here you see how a box with a 4 pixel `rgb(231, 207, 201)` colored shadow looks like.

```
.boxshadow{ -moz-box-shadow:4px 4px 4px  
4px rgb(231, 207, 201); -webkit-box-  
shadow:4px 4px 4px 4px rgb(231, 207, 201);  
box-shadow:4px 4px 4px 4px rgb(231, 207,  
201) }
```


Background

The CSS property to change the background color of an element to Yxy 65.8316, 0.3355, 0.3356 is called "background". The background property can be set on classes, ids or directly on the HTML element.

```
.background, #background, body{  
background: rgb(231, 207, 201) }
```

If only the background color should be changed can be used:

```
.background{ background-color: rgb(231,  
207, 201) }
```

This example shows the color as background, it is applied via the CSS property "background".

To optimize and compress your CSS code, you can use our [online CSS compressor and optimizer](#) based on csstidy. If you want to create a linear or radial gradient as background or border, check our [CSS Gradient Generator](#).

Hey! You found this booklet interesting? Support Converting Colors with the new Membership Option!

The pro membership hides all ads, plus gives you double the colors in the color bucket, and more awesome pro features!

[Learn more, Memberships starting at \\$2.50/m!](#)

**Follow me
on Twitter!**

@ConvertingColor