

Converting Colors

$Yxy(65.8294, 0.3573, 0.3526)$

Have a look what the booklet for
Yxy(65.8294, 0.3573, 0.3526)
contains.

| | |
|---|----|
| Yxy(65.7823, 0.3575, 0.3529) | 3 |
| Conversions | 4 |
| Details | 6 |
| Harmonies | 12 |
| Previews | 24 |
| Color Blindness Simulation | 27 |
| CSS Examples | 30 |

Color

Yxy(65.7823, 0.3575, 0.3529)

Conversions

Conversions Part 1

| Format | Color |
|-------------|---------------------------|
| Hex | F1CDB7 |
| RGB | 241, 205, 183 |
| RGB Percent | 95%, 80%, 72% |
| CMY | 0.0551, 0.1960, 0.2824 |
| CMYK | 0.00, 0.15, 0.24, 0.06 |
| HSL | 23°, 67%, 83% |
| HSV | 23°, 24%, 94% |
| XYZ | 66.6398, 65.7823, 53.9829 |
| YIQ | 213.2560, 28.5180, 0.7900 |

Conversions

Conversions Part 2

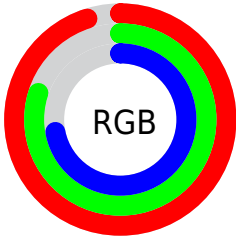
| Format | Color |
|-------------------------------------|--------------------------------|
| R _Y B | 241, 218, 183 |
| Decimal | 15846839 |
| CIE Lab | 84.89, 9.34, 15.65 |
| CIE LCh | 85, 18.222, 59.168 |
| Yxy | 65.7823, 0.3575, 0.3529 |
| Android (android.graphics.Color) | 4294036919 (0xFFF1CDB7) |
| YUV | 213.2560, -14.9162, 24.3315 |
| Hunter-Lab | 81.1063, 4.7258, 17.3121 |

Details

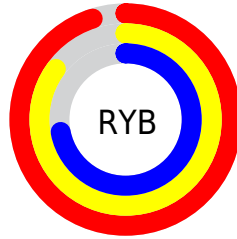
The Yxy color **65.7823, 0.3575, 0.3529** is a light color, and the websafe version is hex **FFCCCC**. A complement of this color would be **67.0339, 0.2751, 0.3038**, and the grayscale version is **66.8056, 0.3127, 0.3290**.

A 20% lighter version of the original color is **99.0120, 0.3220, 0.3444**, and **33.9353, 0.3684, 0.3586** is the 20% darker color. If you saturate the color by 10%, you get **58.0576, 0.3815, 0.3634**, and if you desaturate by 10%, it is **74.3668, 0.3368, 0.3426**.

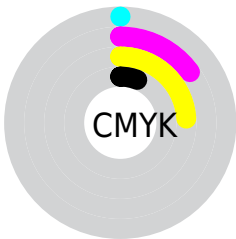
Distribution



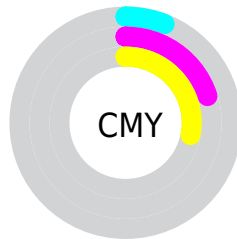
- Red (95%)
- Green (80%)
- Blue (72%)



- Red (95%)
- Yellow (85%)
- Blue (72%)



- Cyan (0%)
- Magenta (15%)
- Yellow (24%)
- Black (6%)




- Cyan (6%)
- Magenta (20%)
- Yellow (28%)

Brightness & Saturation Gradients

These gradients show how the Yxy color 65.7823, 0.3575, 0.3529 changes by changing the brightness by 10 percent. The first figure shows a shift by +10% for each color and the second figure -10%.


Similar to the brightness gradients but the following saturation gradients show a change of the Yxy color 65.7823, 0.3575, 0.3529 by changing the saturation by 10% instead.


 65.7823, 0.3575,
0.3529

 65.7823, 0.3575,
0.3529


445.5979, 0.3363,
0.3420

 48.0957, 0.3625,
0.3553


 113.1738, 0.3500,
0.3492

 33.9027, 0.3687,
0.3583


143.6475, 0.3472,
0.3477

 22.8188, 0.3766,
0.3620

179.1524, 0.3447,
0.3464

 14.4598, 0.3872,
0.3668

220.0728, 0.3426,
0.3453

 8.4412, 0.4017,
0.3730

266.7932, 0.3407,
0.3443

 4.3785, 0.4232,
0.3813

319.6979, 0.3390,

 1.8875, 0.4593,

0.3435

0.3943

379.1713, 0.3376,
0.3427

0.5408, 0.5784,
0.4216

0.0000, 0.0000,
0.0000

65.7823, 0.3575,
0.3529

65.7823, 0.3575,
0.3529

58.0576, 0.3815,
0.3634

74.3668, 0.3368,
0.3426

51.1560, 0.4089,
0.3737

83.8285, 0.3191,
0.3328

45.0512, 0.4394,
0.3828

94.1775, 0.3042,
0.3239

39.7117, 0.4723,
0.3897

97.4310, 0.3041,
0.3290

■ 35.1038, 0.5058,
0.3931

■ 31.1907, 0.5375,
0.3918

■ 27.9309, 0.5645,
0.3851

■ 26.2755, 0.5780,
0.3792

Harmonies

Analogous

The Analogous color harmony consists of three colors that are next to each other on the color wheel.



65.7823, 0.3542, 0.3345



65.7823, 0.3575, 0.3529



65.7823, 0.3484, 0.3658

Triad

The Triadic color harmony groups three colors that are evenly spaced from another and form a triangle on the color wheel.



65.7823, 0.3575, 0.3529



65.7823, 0.2863, 0.3425



65.7823, 0.2948, 0.2919

Complementary

The Complementary color scheme is a pair of colors which are on the opposite of each other on the color wheel.



65.7823, 0.3575, 0.3529



67.0339, 0.2751, 0.3038

Split Complementary

Split-complementary colors differ from the complementary color scheme. The scheme consists of three colors, the original color and two neighbors of the complement color.



65.7823, 0.2777, 0.2927



65.7823, 0.3575, 0.3529



65.7823, 0.2729, 0.3211

Square

The Square scheme is like the rectangle color scheme, but the four colors are evenly spaced on the color wheel.



65.7823, 0.3575, 0.3529



65.7823, 0.3069, 0.3605



65.7823, 0.2698, 0.3030



65.7823, 0.3173, 0.3002

Rectangle

The Rectangle color scheme consists of four colors that form a rectangle on the color wheel.



65.7823, 0.3575, 0.3529



65.7823, 0.3367, 0.3692



65.7823, 0.2698, 0.3030



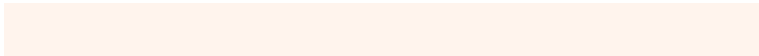
65.7823, 0.2883, 0.2911

Sweetspot

The Sweet Spot groups the original color and five complimentary colors.



65.7853, 0.3575, 0.3529



92.0459, 0.3241, 0.3356



57.7086, 0.3321, 0.2901



19.5599, 0.3251, 0.3362



0.0000, 0.0000, 0.0000



21.4041, 0.3127, 0.3290

Same Dimension

The Same Dimension uses a secret algorithm to generate beautiful new colors.



65.7853, 0.3575, 0.3529



70.2789, 0.3692, 0.3582



80.5114, 0.3508, 0.3817



16.7437, 0.3284, 0.3380



14.4959, 0.5751, 0.3816



1.3920, 0.5505, 0.4011

Inverse Universe

The Inverse Universe completely reimagines the original color for something new.



67.0339, 0.2751, 0.3038



71.9265, 0.2672, 0.2977



53.5561, 0.2723, 0.2702



16.8607, 0.2980, 0.3198



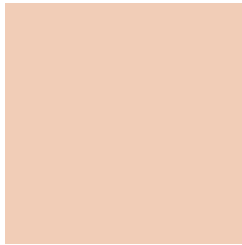
15.4344, 0.1888, 0.1995



1.4753, 0.1940, 0.2184

Previews

White Background



This preview shows how the Yxy color 65.7823, 0.3575, 0.3529 looks on a white background.

Color Contrast Check

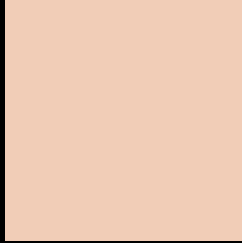
Large Text (above 18pt) WCAG AA × Fail

Any Text WCAG AA × Fail

Large Text (above 18pt) WCAG AAA × Fail

Any Text WCAG AAA × Fail

Black Background



This preview shows how the Yxy color 65.7823, 0.3575, 0.3529 looks on a black background.

Color Contrast Check

Large Text (above 18pt) WCAG AA ✓ Pass

Any Text WCAG AA ✓ Pass

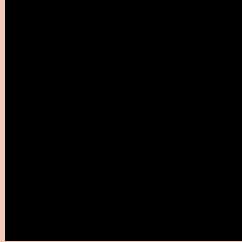
Large Text (above 18pt) WCAG AAA ✓ Pass

Any Text WCAG AAA ✓ Pass

If you want to check with other color combinations, try the [Color Contrast Checker](#).

Yxy 65.7823, 0.3575, 0.3529

Background



This preview shows how black text looks on a background with the Yxy color 65.7823, 0.3575, 0.3529.



This preview shows how white text looks on a background with the Yxy color 65.7823, 0.3575, 0.3529.

Color Blindness Simulation

Color vision deficiency is a very complex topic, and I could not describe the different causes any better than Wikipedia does, so if you want to learn more, you should check out their [article about color blindness](#).

Dichromacy



Original Color

65.7823, 0.3575, 0.3529

Protanopia

66.1617, 0.3387, 0.3584

Deuteranopia

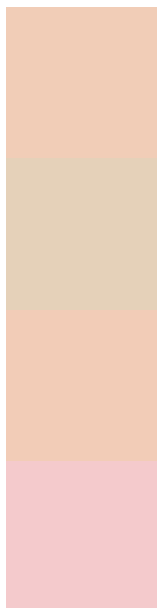
65.6593, 0.3594, 0.3517



Tritanopia

65.6789, 0.3362, 0.3123

Trichromacy



Original Color

65.7823, 0.3575, 0.3529

Protanomaly

65.7617, 0.3455, 0.3557

Deuteranomaly

65.4819, 0.3586, 0.3517

Tritanomaly

65.8338, 0.3443, 0.3270

Monochromacy



Original Color

65.7823, 0.3575, 0.3529

Achromatopsia

66.5387, 0.3127, 0.3290

Achromatomaly

66.0454, 0.3282, 0.3380

CSS Examples

Text

The CSS property to change the color of the text to Yxy 65.7823, 0.3575, 0.3529 is called "color". The color property can be set on classes, ids or directly on the HTML element.

This example shows how text in the color `rgb(241, 205, 183)` looks like.

```
.text, #text, p{  
    color:rgb(241, 205, 183)  
}
```

If you want to add a text shadow in that color use the text-shadow property, you can generate a text shadow directly with our [CSS Text Shadow Generator](#).

Here you see how black text with a 4 pixel rgb(241, 205, 183) colored shadow looks like.

```
.shadow{ text-shadow: 4px 4px 2px rgb(241, 205, 183) }
```

Border

The CSS property to change the border of an element to Yxy 65.7823, 0.3575, 0.3529 is called "border". The border property can be set on classes, ids or directly on the HTML element.

This example shows the color as border, it can be applied via the CSS property "border" or "border-color".

```
.border, #border, table{ border:4px solid rgb(241, 205, 183) }
```

If only the border color should be changed use the property `border-color`.

```
.border{ border-color:rgb(241, 205, 183) }
```

If you want to add a box shadow in that color use:

Here you see how a box with a 4 pixel `rgb(241, 205, 183)` colored shadow looks like.

```
.boxshadow{ -moz-box-shadow:4px 4px 4px  
4px rgb(241, 205, 183); -webkit-box-  
shadow:4px 4px 4px 4px rgb(241, 205, 183);  
box-shadow:4px 4px 4px 4px rgb(241, 205,  
183) }
```


Background

The CSS property to change the background color of an element to Yxy 65.7823, 0.3575, 0.3529 is called "background". The background property can be set on classes, ids or directly on the HTML element.

```
.background, #background, body{  
background: rgb(241, 205, 183) }
```

If only the background color should be changed can be used:

```
.background{ background-color: rgb(241,  
205, 183) }
```

This example shows the color as background, it is applied via the CSS property "background".

To optimize and compress your CSS code, you can use our [online CSS compressor and optimizer](#) based on csstidy. If you want to create a linear or radial gradient as background or border, check our [CSS Gradient Generator](#).

Hey! You found this booklet interesting? Support Converting Colors with the new Membership Option!

The pro membership hides all ads, plus gives you double the colors in the color bucket, and more awesome pro features!

[Learn more, Memberships starting at \\$2.50/m!](#)

**Follow me
on Twitter!**

@ConvertingColor