

Converting Colors

$Yxy(66.0016, 0.3291, 0.3236)$

Have a look what the booklet for
Yxy(66.0016, 0.3291, 0.3236)
contains.

Yxy(66.0016, 0.3291, 0.3236)	3
Conversions	4
Details	6
Harmonies	12
Previews	24
Color Blindness Simulation	27
CSS Examples	30

Color

Yxy(66.0016, 0.3291, 0.3236)

Conversions

Conversions Part 1

Format	Color
Hex	E8CED3
RGB	232, 206, 211
RGB Percent	91%, 81%, 83%
CMY	0.0900, 0.1922, 0.1725
CMYK	0.00, 0.11, 0.09, 0.09
HSL	348°, 36%, 86%
HSV	348°, 11%, 91%
XYZ	67.1234, 66.0016, 70.8355
YIQ	214.3440, 13.8910, 7.0670

Conversions

Conversions Part 2

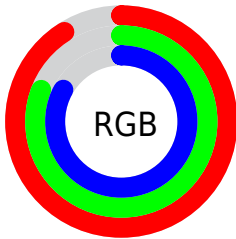
Format	Color
R_{YB}	232, 206, 211
Decimal	15257299
CIE _{Lab}	85.00, 9.93, 0.84
CIE _{LCh}	85, 9.964, 4.808
Yxy	66.0016, 0.3291, 0.3236
Android (android.graphics.Color)	4293447379 (0xFFE8CED3)
YUV	214.3440, -1.6486, 15.4843
Hunter-Lab	81.2414, 5.3082, 5.1732

Details

The Yxy color $66.0016, 0.3291, 0.3236$ is a light color, and the websafe version is hex `FFCCCC`. A complement of this color would be $76.4154, 0.2985, 0.3345$, and the grayscale version is $67.4994, 0.3127, 0.3290$.

A 20% lighter version of the original color is $100.0000, 0.3127, 0.3290$, and $34.1209, 0.3324, 0.3220$ is the 20% darker color. If you saturate the color by 10%, you get $54.7594, 0.3474, 0.3185$, and if you desaturate by 10%, it is $79.0086, 0.3143, 0.3284$.

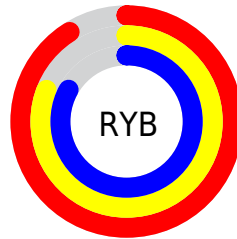
Distribution



Red (91%)

Green (81%)

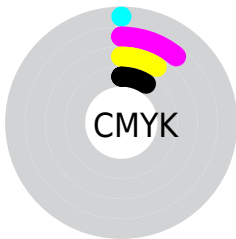
Blue (83%)



Red (91%)

Yellow (81%)

Blue (83%)

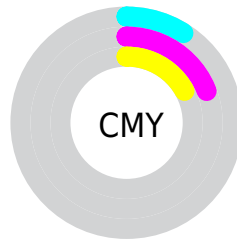


Cyan (0%)

Magenta (11%)

Yellow (9%)

Black (9%)



Cyan (9%)


Magenta (19%)

Yellow (17%)

Brightness & Saturation Gradients

These gradients show how the Yxy color 66.0016, 0.3291, 0.3236 changes by changing the brightness by 10 percent. The first figure shows a shift by +10% for each color and the second figure -10%.

Similar to the brightness gradients but the following saturation gradients show a change of the Yxy color 66.0016, 0.3291, 0.3236 by changing the saturation by 10% instead.

 66.0016, 0.3291,
0.3236

 66.0016, 0.3291,
0.3236

446.3826, 0.3214,
0.3262

 48.2737, 0.3309,
0.3230


113.4886, 0.3264,
0.3245

 34.0437, 0.3332,
0.3222


144.0165, 0.3253,
0.3249

 22.9272, 0.3360,
0.3213


179.5799, 0.3244,
0.3252

 14.5397, 0.3399,
0.3200

220.5632, 0.3237,
0.3254

 8.4970, 0.3452,
0.3181

267.3507, 0.3230,
0.3256

 4.4146, 0.3532,
0.3154

320.3268, 0.3224,

 1.9081, 0.3663,

0.3258

0.3108

379.8760, 0.3219,
0.3260

0.5532, 0.4118,
0.2966

0.0000, 0.0000,
0.0000

66.0016, 0.3291,
0.3236

66.0016, 0.3291,
0.3236

54.7594, 0.3474,
0.3185

79.0086, 0.3143,
0.3284

45.1976, 0.3700,
0.3132

93.8428, 0.3024,
0.3329

37.2377, 0.3976,
0.3081

95.9061, 0.2988,
0.3290

30.7916, 0.4306,
0.3036

■ 25.7629, 0.4687,
0.3005

■ 22.0438, 0.5102,
0.2997

■ 19.5108, 0.5516,
0.3021

■ 18.0168, 0.5879,
0.3079

■ 17.3535, 0.6123,
0.3147

Harmonies

Analogous

The Analogous color harmony consists of three colors that are next to each other on the color wheel.



66.0016, 0.3177, 0.3144



66.0016, 0.3291, 0.3236



66.0016, 0.3361, 0.3344

Triad

The Triadic color harmony groups three colors that are evenly spaced from another and form a triangle on the color wheel.



66.0016, 0.3291, 0.3236



66.0016, 0.3199, 0.3501



66.0016, 0.2893, 0.3135

Complementary

The Complementary color scheme is a pair of colors which are on the opposite of each other on the color wheel.



66.0016, 0.3291, 0.3236



76.4154, 0.2985, 0.3345

Split Complementary

Split-complementary colors differ from the complementary color scheme. The scheme consists of three colors, the original color and two neighbors of the complement color.



66.0016, 0.2899, 0.3229



66.0016, 0.3291, 0.3236



66.0016, 0.3074, 0.3444

Square

The Square scheme is like the rectangle color scheme, but the four colors are evenly spaced on the color wheel.



66.0016, 0.3291, 0.3236



66.0016, 0.3307, 0.3499



66.0016, 0.2965, 0.3343



66.0016, 0.2949, 0.3085

Rectangle

The Rectangle color scheme consists of four colors that form a rectangle on the color wheel.



66.0016, 0.3291, 0.3236



66.0016, 0.3372, 0.3411



66.0016, 0.2965, 0.3343



66.0016, 0.2888, 0.3162

Sweetspot

The Sweet Spot groups the original color and five complimentary colors.



66.0045, 0.3291, 0.3236



94.8244, 0.3167, 0.3276



66.2703, 0.3101, 0.3011



20.0077, 0.3179, 0.3272



0.0000, 0.0000, 0.0000



21.4041, 0.3127, 0.3290

Same Dimension

The Same Dimension uses a secret algorithm to generate beautiful new colors.



66.0045, 0.3291, 0.3236



79.0377, 0.3322, 0.3227



69.6171, 0.3318, 0.3375



15.1015, 0.3263, 0.3245



9.9505, 0.6091, 0.3129



0.7945, 0.5721, 0.2925

Inverse Universe

The Inverse Universe completely reimagines the original color for something new.



66.0045, 0.3291, 0.3236



79.0377, 0.3322, 0.3227



72.3887, 0.2954, 0.3203



15.1015, 0.3263, 0.3245



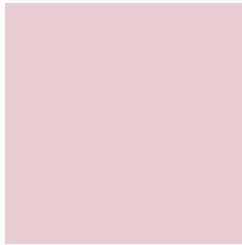
9.9505, 0.6091, 0.3129



0.7945, 0.5721, 0.2925

Previews

White Background



This preview shows how the Yxy color 66.0016, 0.3291, 0.3236 looks on a white background.

Color Contrast Check

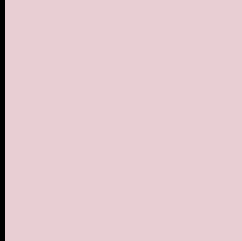
Large Text (above 18pt) WCAG AA × Fail

Any Text WCAG AA × Fail

Large Text (above 18pt) WCAG AAA × Fail

Any Text WCAG AAA × Fail

Black Background



This preview shows how the Yxy color 66.0016, 0.3291, 0.3236 looks on a black background.

Color Contrast Check

Large Text (above 18pt) WCAG AA ✓ Pass

Any Text WCAG AA ✓ Pass

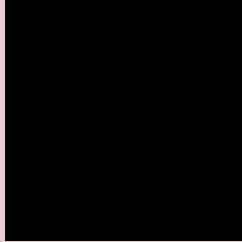
Large Text (above 18pt) WCAG AAA ✓ Pass

Any Text WCAG AAA ✓ Pass

If you want to check with other color combinations, try the [Color Contrast Checker](#).

Yxy 66.0016, 0.3291, 0.3236

Background



This preview shows how black text looks on a background with the Yxy color 66.0016, 0.3291, 0.3236.



This preview shows how white text looks on a background with the Yxy color 66.0016, 0.3291, 0.3236.

Color Blindness Simulation

Color vision deficiency is a very complex topic, and I could not describe the different causes any better than Wikipedia does, so if you want to learn more, you should check out their [article about color blindness](#).

Dichromacy



Original Color

66.0016, 0.3291, 0.3236

Protanopia

66.0425, 0.3144, 0.3257

Deuteranopia

66.1694, 0.3298, 0.3236



Tritanopia

65.7298, 0.3227, 0.3108

Trichromacy



Original Color

66.0016, 0.3291, 0.3236

Protanomaly

65.9346, 0.3197, 0.3246

Deuteranomaly

66.1694, 0.3298, 0.3236

Tritanomaly

65.9960, 0.3255, 0.3161

Monochromacy



Original Color

66.0016, 0.3291, 0.3236

Achromatopsia

67.2443, 0.3127, 0.3290

Achromatomaly

66.7648, 0.3188, 0.3268

CSS Examples

Text

The CSS property to change the color of the text to Yxy 66.0016, 0.3291, 0.3236 is called "color". The color property can be set on classes, ids or directly on the HTML element.

This example shows how text in the color `rgb(232, 206, 211)` looks like.

```
.text, #text, p{  
    color:rgb(232, 206, 211)  
}
```

If you want to add a text shadow in that color use the text-shadow property, you can generate a text shadow directly with our [CSS Text Shadow Generator](#).

Here you see how black text with a 4 pixel rgb(232, 206, 211) colored shadow looks like.

```
.shadow{ text-shadow: 4px 4px 2px rgb(232, 206, 211) }
```

Border

The CSS property to change the border of an element to Yxy 66.0016, 0.3291, 0.3236 is called "border". The border property can be set on classes, ids or directly on the HTML element.

This example shows the color as border, it can be applied via the CSS property "border" or "border-color".

```
.border, #border, table{ border:4px solid rgb(232, 206, 211) }
```

If only the border color should be changed use the property border-color.

```
.border{ border-color:rgb(232, 206, 211) }
```

If you want to add a box shadow in that color use:

Here you see how a box with a 4 pixel rgb(232, 206, 211) colored shadow looks like.

```
.boxshadow{ -moz-box-shadow:4px 4px 4px  
4px rgb(232, 206, 211); -webkit-box-  
shadow:4px 4px 4px 4px rgb(232, 206, 211);  
box-shadow:4px 4px 4px 4px rgb(232, 206,  
211) }
```


Background

The CSS property to change the background color of an element to Yxy 66.0016, 0.3291, 0.3236 is called "background". The background property can be set on classes, ids or directly on the HTML element.

```
.background, #background, body{  
background: rgb(232, 206, 211) }
```

If only the background color should be changed can be used:

```
.background{ background-color: rgb(232,  
206, 211) }
```

This example shows the color as background, it is applied via the CSS property "background".

To optimize and compress your CSS code, you can use our [online CSS compressor and optimizer](#) based on csstidy. If you want to create a linear or radial gradient as background or border, check our [CSS Gradient Generator](#).

Hey! You found this booklet interesting? Support Converting Colors with the new Membership Option!

The pro membership hides all ads, plus gives you double the colors in the color bucket, and more awesome pro features!

[Learn more, Memberships starting at \\$2.50/m!](#)

**Follow me
on Twitter!**

@ConvertingColor