

Converting Colors

Yxy(66.0433, 0.3491, 0.3469)

Have a look what the booklet for
Yxy(66.0433, 0.3491, 0.3469)
contains.

Yxy(65.8648, 0.3487, 0.3465)	3
<i>Conversions</i>	4
<i>Details</i>	6
<i>Harmonies</i>	12
<i>Previews</i>	24
<i>Color Blindness Simulation</i>	27
<i>CSS Examples</i>	30

Color

Yxy(65.8648, 0.3487, 0.3465)

Conversions

Conversions Part 1

Format	Color
Hex	EDCEBE
RGB	237, 206, 190
RGB Percent	93%, 81%, 75%
CMY	0.0707, 0.1921, 0.2549
CMYK	0.00, 0.13, 0.20, 0.07
HSL	20°, 57%, 84%
HSV	20°, 20%, 93%
XYZ	66.2830, 65.8648, 57.9382
YIQ	213.4450, 23.6120, 1.5960

Conversions

Conversions Part 2

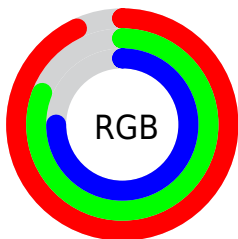
Format	Color
R _Y B	237, 214, 190
Decimal	15584958
CIE Lab	84.93, 8.36, 11.94
CIE LCh	85, 14.581, 55.000
Yxy	65.8648, 0.3487, 0.3465
Android (android.graphics.Color)	4293775038 (0xFFEDCEBE)
YUV	213.4450, -11.5584, 20.6577
Hunter-Lab	81.1571, 3.7603, 14.4828

Details

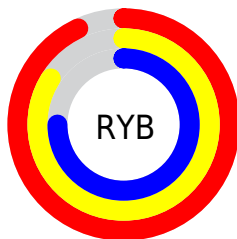
The Yxy color $65.8648, 0.3487, 0.3465$ is a light color, and the websafe version is hex `FFCCCC`. A complement of this color would be $68.7515, 0.2819, 0.3108$, and the grayscale version is $66.9200, 0.3127, 0.3290$.

A 20% lighter version of the original color is $99.4338, 0.3179, 0.3376$, and $34.0864, 0.3577, 0.3503$ is the 20% darker color. If you saturate the color by 10%, you get $57.7635, 0.3717, 0.3559$, and if you desaturate by 10%, it is $74.8878, 0.3291, 0.3374$.

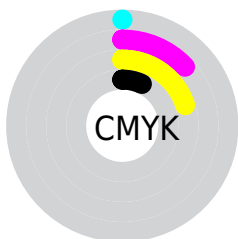
Distribution



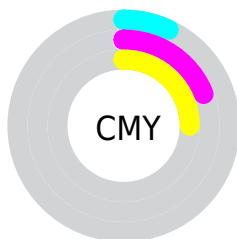
- Red (93%)
- Green (81%)
- Blue (75%)



- Red (93%)
- Yellow (84%)
- Blue (75%)



- Cyan (0%)
- Magenta (13%)
- Yellow (20%)
- Black (7%)





- Cyan (7%)
- Magenta (19%)
- Yellow (25%)

Brightness & Saturation Gradients


These gradients show how the Yxy color 65.8648, 0.3487, 0.3465 changes by changing the brightness by 10 percent. The first figure shows a shift by +10% for each color and the second figure -10%.


Similar to the brightness gradients but the following saturation gradients show a change of the Yxy color 65.8648, 0.3487, 0.3465 by changing the saturation by 10% instead.


 65.8648, 0.3487,
0.3465

 65.8648, 0.3487,
0.3465


445.8932, 0.3316,
0.3385

 48.1627, 0.3527,
0.3483


 113.2923, 0.3427,
0.3437

 33.9557, 0.3577,
0.3505


143.7864, 0.3404,
0.3427

 22.8596, 0.3641,
0.3533


179.3133, 0.3384,
0.3417

 14.4899, 0.3726,
0.3569

220.2573, 0.3367,
0.3409

 8.4622, 0.3845,
0.3616

267.0030, 0.3352,
0.3402

 4.3921, 0.4021,
0.3681

319.9346, 0.3339,

 1.8952, 0.4306,

0.3396

0.3774

379.4365, 0.3327,
0.3390

■ 0.5455, 0.5698,
0.4302

■ 0.0000, 0.0000,
0.0000

■ 65.8648, 0.3487,
0.3465

■ 65.8648, 0.3487,
0.3465

■ 57.7635, 0.3717,
0.3559

■ 74.8878, 0.3291,
0.3374

■ 50.5450, 0.3985,
0.3653

■ 84.8520, 0.3124,
0.3289

■ 44.1810, 0.4289,
0.3740

■ 95.3884, 0.3017,
0.3269

■ 38.6379, 0.4625,
0.3811

■ 96.7390, 0.3017,
0.3290

■ 33.8797, 0.4978,
0.3853

■ 29.8673, 0.5325,
0.3854

■ 26.5576, 0.5633,
0.3804

■ 23.8954, 0.5881,
0.3711

■ 23.8521, 0.5885,
0.3709

Harmonies

Analogous

The Analogous color harmony consists of three colors that are next to each other on the color wheel.



65.8648, 0.3446, 0.3315



65.8648, 0.3487, 0.3465



65.8648, 0.3428, 0.3575

Triad

The Triadic color harmony groups three colors that are evenly spaced from another and form a triangle on the color wheel.



65.8648, 0.3487, 0.3465



65.8648, 0.2936, 0.3420



65.8648, 0.2962, 0.2987

Complementary

The Complementary color scheme is a pair of colors which are on the opposite of each other on the color wheel.



65.8648, 0.3487, 0.3465



68.7515, 0.2819, 0.3108

Split Complementary

Split-complementary colors differ from the complementary color scheme. The scheme consists of three colors, the original color and two neighbors of the complement color.



65.8648, 0.2832, 0.3006



65.8648, 0.3487, 0.3465



65.8648, 0.2818, 0.3252

Square

The Square scheme is like the rectangle color scheme, but the four colors are evenly spaced on the color wheel.



65.8648, 0.3487, 0.3465



65.8648, 0.3107, 0.3554



65.8648, 0.2780, 0.3100



65.8648, 0.3139, 0.3045

Rectangle

The Rectangle color scheme consists of four colors that form a rectangle on the color wheel.



65.8648, 0.3487, 0.3465



65.8648, 0.3341, 0.3609



65.8648, 0.2780, 0.3100



65.8648, 0.2911, 0.2985

Sweetspot

The Sweet Spot groups the original color and five complimentary colors.



65.8678, 0.3487, 0.3465



92.7875, 0.3224, 0.3341



60.0663, 0.3269, 0.2956



19.6976, 0.3236, 0.3347



0.0000, 0.0000, 0.0000



21.4041, 0.3127, 0.3290

Same Dimension

The Same Dimension uses a secret algorithm to generate beautiful new colors.



65.8678, 0.3487, 0.3465



73.5760, 0.3581, 0.3505



77.8338, 0.3441, 0.3706



15.8935, 0.3284, 0.3371



13.2450, 0.5855, 0.3733



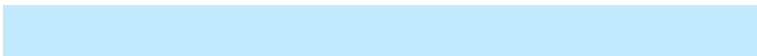
1.2128, 0.5588, 0.3945

Inverse Universe

The Inverse Universe completely reimagines the original color for something new.



68.7515, 0.2819, 0.3108



77.5860, 0.2753, 0.3064



57.3730, 0.2802, 0.2837



16.2069, 0.2981, 0.3208



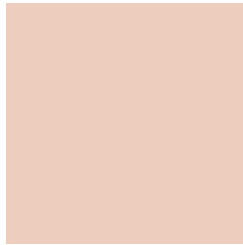
16.6100, 0.1927, 0.2136



1.4816, 0.1976, 0.2315

Previews

White Background



This preview shows how the Yxy color 65.8648, 0.3487, 0.3465 looks on a white background.

Color Contrast Check

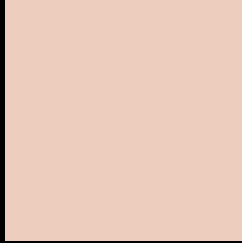
Large Text (above 18pt) WCAG AA × Fail

Any Text WCAG AA × Fail

Large Text (above 18pt) WCAG AAA × Fail

Any Text WCAG AAA × Fail

Black Background



This preview shows how the Yxy color 65.8648, 0.3487, 0.3465 looks on a black background.

Color Contrast Check

Large Text (above 18pt) WCAG AA ✓ Pass

Any Text WCAG AA ✓ Pass

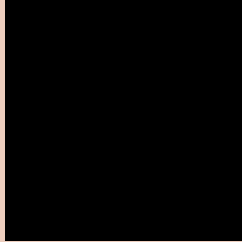
Large Text (above 18pt) WCAG AAA ✓ Pass

Any Text WCAG AAA ✓ Pass

If you want to check with other color combinations, try the [Color Contrast Checker](#).

Yxy 65.8648, 0.3487, 0.3465

Background



This preview shows how black text looks on a background with the Yxy color 65.8648, 0.3487, 0.3465.

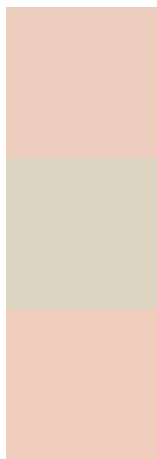


This preview shows how white text looks on a background with the Yxy color 65.8648, 0.3487, 0.3465.

Color Blindness Simulation

Color vision deficiency is a very complex topic, and I could not describe the different causes any better than Wikipedia does, so if you want to learn more, you should check out their [article about color blindness](#).

Dichromacy



Original Color

65.8648, 0.3487, 0.3465

Protanopia

66.3094, 0.3329, 0.3504

Deuteranopia

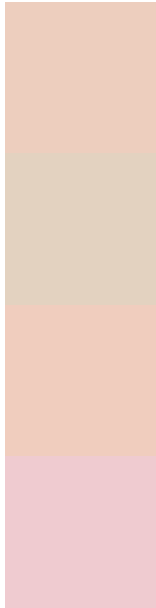
66.0811, 0.3521, 0.3453



Tritanopia

65.8283, 0.3305, 0.3121

Trichromacy



Original Color

65.8648, 0.3487, 0.3465

Protanomaly

66.2299, 0.3386, 0.3491

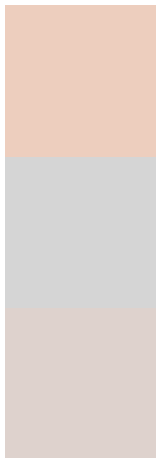
Deuteranomaly

65.9056, 0.3513, 0.3453

Tritanomaly

65.6167, 0.3371, 0.3237

Monochromacy



Original Color

65.8648, 0.3487, 0.3465

Achromatopsia

66.5387, 0.3127, 0.3290

Achromatomaly

66.0306, 0.3253, 0.3346

CSS Examples

Text

The CSS property to change the color of the text to Yxy 65.8648, 0.3487, 0.3465 is called "color". The color property can be set on classes, ids or directly on the HTML element.

This example shows how text in the color `rgb(237, 206, 190)` looks like.

```
.text, #text, p{  
    color:rgb(237, 206, 190)  
}
```

If you want to add a text shadow in that color use the text-shadow property, you can generate a text shadow directly with our [CSS Text Shadow Generator](#).

Here you see how black text with a 4 pixel rgb(237, 206, 190) colored shadow looks like.

```
.shadow{ text-shadow: 4px 4px 2px rgb(237, 206, 190) }
```

Border

The CSS property to change the border of an element to Yxy 65.8648, 0.3487, 0.3465 is called "border". The border property can be set on classes, ids or directly on the HTML element.

This example shows the color as border, it can be applied via the CSS property "border" or "border-color".

```
.border, #border, table{ border:4px solid rgb(237, 206, 190) }
```

If only the border color should be changed use the property `border-color`.

```
.border{ border-color:rgb(237, 206, 190) }
```

If you want to add a box shadow in that color use:

Here you see how a box with a 4 pixel `rgb(237, 206, 190)` colored shadow looks like.

```
.boxshadow{ -moz-box-shadow:4px 4px 4px 4px rgb(237, 206, 190); -webkit-box-shadow:4px 4px 4px 4px rgb(237, 206, 190); box-shadow:4px 4px 4px 4px rgb(237, 206, 190) }
```


Background

The CSS property to change the background color of an element to Yxy 65.8648, 0.3487, 0.3465 is called "background". The background property can be set on classes, ids or directly on the HTML element.

```
.background, #background, body{  
background: rgb(237, 206, 190) }
```

If only the background color should be changed can be used:

```
.background{ background-color: rgb(237,  
206, 190) }
```

This example shows the color as background, it is applied via the CSS property "background".

To optimize and compress your CSS code, you can use our [online CSS compressor and optimizer](#) based on csstidy. If you want to create a linear or radial gradient as background or border, check our [CSS Gradient Generator](#).

Hey! You found this booklet interesting? Support Converting Colors with the new Membership Option!

The pro membership hides all ads, plus gives you double the colors in the color bucket, and more awesome pro features!

[Learn more, Memberships starting at \\$2.50/m!](#)

**Follow me
on Twitter!**

@ConvertingColor