

Converting Colors

Yxy(66.0519, 0.3283, 0.3226)

Have a look what the booklet for
Yxy(66.0519, 0.3283, 0.3226)
contains.

| | |
|--|----|
| Yxy(66.0519, 0.3283, 0.3226) | 3 |
| <i>Conversions</i> | 4 |
| <i>Details</i> | 6 |
| <i>Harmonies</i> | 12 |
| <i>Previews</i> | 24 |
| <i>Color Blindness Simulation</i> | 27 |
| <i>CSS Examples</i> | 30 |

Color

Yxy(66.0519, 0.3283, 0.3226)

Conversions

Conversions Part 1

| Format | Color |
|-------------|---------------------------|
| Hex | E8CED4 |
| RGB | 232, 206, 212 |
| RGB Percent | 91%, 81%, 83% |
| CMY | 0.0904, 0.1921, 0.1687 |
| CMYK | 0.00, 0.11, 0.09, 0.09 |
| HSL | 346°, 36%, 86% |
| HSV | 346°, 11%, 91% |
| XYZ | 67.2190, 66.0519, 71.4777 |
| YIQ | 214.4580, 13.5700, 7.3780 |

Conversions

Conversions Part 2

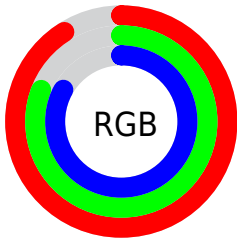
| Format | Color |
|-------------------------------------|-------------------------------|
| R _Y B | 232, 206, 212 |
| Decimal | 15257300 |
| CIE Lab | 85.02, 10.03, 0.36 |
| CIE LCh | 85, 10.036, 2.040 |
| Yxy | 66.0519, 0.3283, 0.3226 |
| Android (android.graphics.Color) | 4293447380 (0xFFE8CED4) |
| YUV | 214.4580, -1.2118, 15.3843 |
| Hunter-Lab | 81.2723, 5.4078, 4.7460 |

Details

The Yxy color **66.0519, 0.3283, 0.3226** is a light color, and the websafe version is hex **FFCCCC**. A complement of this color would be **76.3016, 0.2991, 0.3355**, and the grayscale version is **67.5687, 0.3127, 0.3290**.

A 20% lighter version of the original color is **100.0000, 0.3127, 0.3290**, and **34.1209, 0.3324, 0.3220** is the 20% darker color. If you saturate the color by 10%, you get **54.8445, 0.3457, 0.3165**, and if you desaturate by 10%, it is **79.0130, 0.3142, 0.3284**.

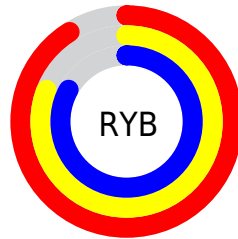
Distribution



Red (91%)

Green (81%)

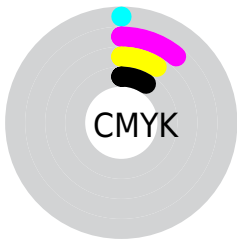
Blue (83%)



Red (91%)

Yellow (81%)

Blue (83%)

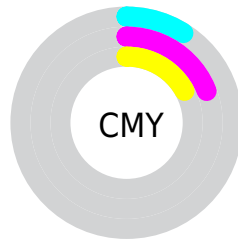


Cyan (0%)

Magenta (11%)

Yellow (9%)

Black (9%)



Cyan (9%)


Magenta (19%)


Yellow (17%)

Brightness & Saturation Gradients


These gradients show how the Yxy color 66.0519, 0.3283, 0.3226 changes by changing the brightness by 10 percent. The first figure shows a shift by +10% for each color and the second figure -10%.

Similar to the brightness gradients but the following saturation gradients show a change of the Yxy color 66.0519, 0.3283, 0.3226 by changing the saturation by 10% instead.

 66.0519, 0.3283,
0.3226

 66.0519, 0.3283,
0.3226


446.5625, 0.3210,
0.3256

 48.3145, 0.3300,
0.3219


113.5608, 0.3257,
0.3237

 34.0760, 0.3322,
0.3210


144.1012, 0.3247,
0.3241

 22.9520, 0.3349,
0.3199


179.6780, 0.3239,
0.3244

 14.5581, 0.3385,
0.3184

220.6756, 0.3231,
0.3247

 8.5098, 0.3436,
0.3162

267.4785, 0.3225,
0.3250

 4.4229, 0.3511,
0.3131

320.4710, 0.3219,

 1.9128, 0.3635,

0.3252

0.3079

380.0375, 0.3214,
0.3254

0.5561, 0.4049,
0.2911

0.0000, 0.0000,
0.0000

66.0519, 0.3283,
0.3226

66.0519, 0.3283,
0.3226

54.8445, 0.3457,
0.3165

79.0130, 0.3142,
0.3284

45.3069, 0.3672,
0.3102

93.7895, 0.3028,
0.3337

37.3614, 0.3934,
0.3041

95.8875, 0.2987,
0.3290

30.9207, 0.4246,
0.2986

■ 25.8891, 0.4608,
0.2947

■ 22.1595, 0.5004,
0.2933

■ 19.6099, 0.5405,
0.2955

■ 18.0942, 0.5767,
0.3016

■ 17.4068, 0.6024,
0.3092

Harmonies

Analogous

The Analogous color harmony consists of three colors that are next to each other on the color wheel.



66.0519, 0.3166, 0.3136



66.0519, 0.3283, 0.3226



66.0519, 0.3358, 0.3334

Triad

The Triadic color harmony groups three colors that are evenly spaced from another and form a triangle on the color wheel.



66.0519, 0.3283, 0.3226



66.0519, 0.3211, 0.3505



66.0519, 0.2890, 0.3141

Complementary

The Complementary color scheme is a pair of colors which are on the opposite of each other on the color wheel.



66.0519, 0.3283, 0.3226



76.3016, 0.2991, 0.3355

Split Complementary

Split-complementary colors differ from the complementary color scheme. The scheme consists of three colors, the original color and two neighbors of the complement color.



66.0519, 0.2901, 0.3239



66.0519, 0.3283, 0.3226



66.0519, 0.3085, 0.3452

Square

The Square scheme is like the rectangle color scheme, but the four colors are evenly spaced on the color wheel.



66.0519, 0.3283, 0.3226



66.0519, 0.3316, 0.3497



66.0519, 0.2972, 0.3354



66.0519, 0.2940, 0.3086

Rectangle

The Rectangle color scheme consists of four colors that form a rectangle on the color wheel.



66.0519, 0.3283, 0.3226



66.0519, 0.3374, 0.3403



66.0519, 0.2972, 0.3354



66.0519, 0.2887, 0.3170

Sweetspot

The Sweet Spot groups the original color and five complimentary colors.



66.0548, 0.3283, 0.3226



94.8420, 0.3166, 0.3273



66.1312, 0.3095, 0.3012



20.0124, 0.3176, 0.3269



0.0000, 0.0000, 0.0000



21.4041, 0.3127, 0.3290

Same Dimension

The Same Dimension uses a secret algorithm to generate beautiful new colors.



66.0548, 0.3283, 0.3226



79.1058, 0.3313, 0.3215



69.1627, 0.3318, 0.3365



14.4219, 0.3256, 0.3236



9.6842, 0.5986, 0.3071



0.7296, 0.5578, 0.2846

Inverse Universe

The Inverse Universe completely reimagines the original color for something new.



66.0548, 0.3283, 0.3226



79.1058, 0.3313, 0.3215



72.8193, 0.2955, 0.3213



14.4219, 0.3256, 0.3236



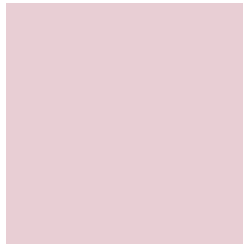
9.6842, 0.5986, 0.3071



0.7296, 0.5578, 0.2846

Previews

White Background



This preview shows how the Yxy color 66.0519, 0.3283, 0.3226 looks on a white background.

Color Contrast Check

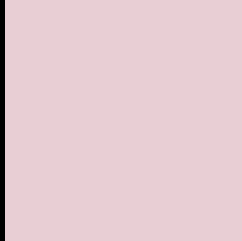
Large Text (above 18pt) WCAG AA × Fail

Any Text WCAG AA × Fail

Large Text (above 18pt) WCAG AAA × Fail

Any Text WCAG AAA × Fail

Black Background



This preview shows how the Yxy color 66.0519, 0.3283, 0.3226 looks on a black background.

Color Contrast Check

Large Text (above 18pt) WCAG AA ✓ Pass

Any Text WCAG AA ✓ Pass

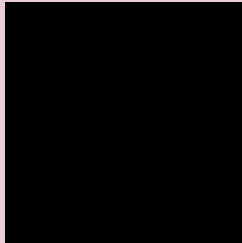
Large Text (above 18pt) WCAG AAA ✓ Pass

Any Text WCAG AAA ✓ Pass

If you want to check with other color combinations, try the [Color Contrast Checker](#).

Yxy 66.0519, 0.3283, 0.3226

Background



This preview shows how black text looks on a background with the Yxy color 66.0519, 0.3283, 0.3226.



This preview shows how white text looks on a background with the Yxy color 66.0519, 0.3283, 0.3226.

Color Blindness Simulation

Color vision deficiency is a very complex topic, and I could not describe the different causes any better than Wikipedia does, so if you want to learn more, you should check out their [article about color blindness](#).

Dichromacy



Original Color

66.0519, 0.3283, 0.3226

Protanopia

65.9419, 0.3129, 0.3245

Deuteranopia

66.2197, 0.3291, 0.3226



Tritanopia

66.2067, 0.3226, 0.3119

Trichromacy



Original Color

66.0519, 0.3283, 0.3226

Protanomaly

65.8281, 0.3182, 0.3235

Deuteranomaly

66.2197, 0.3291, 0.3226

Tritanomaly

66.0482, 0.3248, 0.3151

Monochromacy



Original Color

66.0519, 0.3283, 0.3226

Achromatopsia

67.2443, 0.3127, 0.3290

Achromatomaly

66.7648, 0.3188, 0.3268

CSS Examples

Text

The CSS property to change the color of the text to Yxy 66.0519, 0.3283, 0.3226 is called "color". The color property can be set on classes, ids or directly on the HTML element.

This example shows how text in the color `rgb(232, 206, 212)` looks like.

```
.text, #text, p{  
    color:rgb(232, 206, 212)  
}
```

If you want to add a text shadow in that color use the text-shadow property, you can generate a text shadow directly with our [CSS Text Shadow Generator](#).

Here you see how black text with a 4 pixel rgb(232, 206, 212) colored shadow looks like.

```
.shadow{ text-shadow: 4px 4px 2px rgb(232, 206, 212) }
```

Border

The CSS property to change the border of an element to Yxy 66.0519, 0.3283, 0.3226 is called "border". The border property can be set on classes, ids or directly on the HTML element.

This example shows the color as border, it can be applied via the CSS property "border" or "border-color".

```
.border, #border, table{ border:4px solid rgb(232, 206, 212) }
```

If only the border color should be changed use the property border-color.

```
.border{ border-color:rgb(232, 206, 212) }
```

If you want to add a box shadow in that color use:

Here you see how a box with a 4 pixel rgb(232, 206, 212) colored shadow looks like.

```
.boxshadow{ -moz-box-shadow:4px 4px 4px  
4px rgb(232, 206, 212); -webkit-box-  
shadow:4px 4px 4px 4px rgb(232, 206, 212);  
box-shadow:4px 4px 4px 4px rgb(232, 206,  
212) }
```


Background

The CSS property to change the background color of an element to Yxy 66.0519, 0.3283, 0.3226 is called "background". The background property can be set on classes, ids or directly on the HTML element.

```
.background, #background, body{  
background: rgb(232, 206, 212) }
```

If only the background color should be changed can be used:

```
.background{ background-color: rgb(232,  
206, 212) }
```

This example shows the color as background, it is applied via the CSS property "background".

To optimize and compress your CSS code, you can use our [online CSS compressor and optimizer](#) based on csstidy. If you want to create a linear or radial gradient as background or border, check our [CSS Gradient Generator](#).

Hey! You found this booklet interesting? Support Converting Colors with the new Membership Option!

The pro membership hides all ads, plus gives you double the colors in the color bucket, and more awesome pro features!

[Learn more, Memberships starting at \\$2.50/m!](#)

**Follow me
on Twitter!**

@ConvertingColor