

Converting Colors

Yxy(66.3046, 0.3492, 0.3535)

Have a look what the booklet for
Yxy(66.3046, 0.3492, 0.3535)
contains.

Yxy(66.1493, 0.3489, 0.3532)	3
<i>Conversions</i>	4
<i>Details</i>	6
<i>Harmonies</i>	12
<i>Previews</i>	24
<i>Color Blindness Simulation</i>	27
<i>CSS Examples</i>	30

Color

Yxy(66.1493, 0.3489, 0.3532)

Conversions

Conversions Part 1

Format	Color
Hex	EAD0BA
RGB	234, 208, 186
RGB Percent	92%, 82%, 73%
CMY	0.0825, 0.1843, 0.2705
CMYK	0.00, 0.11, 0.20, 0.08
HSL	28°, 53%, 82%
HSV	28°, 20%, 92%
XYZ	65.3440, 66.1493, 55.7924
YIQ	213.2660, 22.5580, -1.3300

Conversions

Conversions Part 2

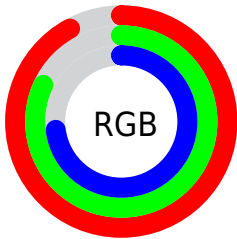
Format	Color
RYB	234, 227, 186
Decimal	15388858
CIELab	85.07, 5.63, 14.22
CIELCh	85, 15.296, 68.386
Yxy	66.1493, 0.3489, 0.3532
Android (android.graphics.Color)	4293578938 (0xFFEAD0BA)
YUV	213.2660, -13.4421, 18.1837
Hunter-Lab	81.3322, 1.0792, 16.2607

Details

The Yxy color **66.1493, 0.3489, 0.3532** is a light color, and the websafe version is hex **FFCCCC**. A complement of this color would be **63.4559, 0.2805, 0.3035**, and the grayscale version is **66.8076, 0.3127, 0.3290**.

A 20% lighter version of the original color is **99.1908, 0.3203, 0.3415**, and **34.2696, 0.3579, 0.3591** is the 20% darker color. If you saturate the color by 10%, you get **59.3054, 0.3706, 0.3657**, and if you desaturate by 10%, it is **73.6553, 0.3299, 0.3410**.

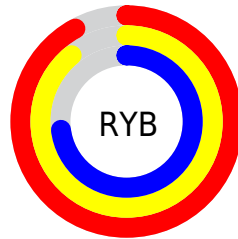
Distribution



Red (92%)

Green (82%)

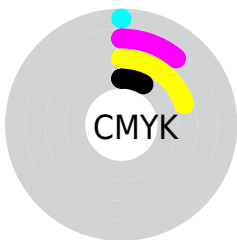
Blue (73%)



Red (92%)

Yellow (89%)

Blue (73%)

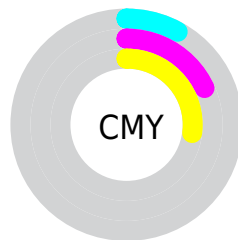


Cyan (0%)

Magenta (11%)

Yellow (20%)

Black (8%)



Cyan (8%)


Magenta (18%)

Yellow (27%)

Brightness & Saturation Gradients


These gradients show how the Yxy color 66.1493, 0.3489, 0.3532 changes by changing the brightness by 10 percent. The first figure shows a shift by +10% for each color and the second figure -10%.


Similar to the brightness gradients but the following saturation gradients show a change of the Yxy color 66.1493, 0.3489, 0.3532 by changing the saturation by 10% instead.


 66.1493, 0.3489,
0.3532

 66.1493, 0.3489,
0.3532


446.9106, 0.3318,
0.3420

 48.3936, 0.3529,
0.3557


 113.7006, 0.3429,
0.3493

 34.1387, 0.3579,
0.3589

144.2650, 0.3406,
0.3478

 23.0002, 0.3643,
0.3629

179.8677, 0.3386,
0.3465

 14.5936, 0.3727,
0.3680

220.8932, 0.3369,
0.3454

 8.5347, 0.3844,
0.3749

267.7259, 0.3354,
0.3444

 4.4389, 0.4016,
0.3846

320.7501, 0.3340,

 1.9220, 0.4296,

0.3435

0.3994

380.3502, 0.3328,
0.3427

■ 0.5616, 0.5445,
0.4555

■ 0.0000, 0.0000,
0.0000

■ 66.1493, 0.3489,
0.3532

■ 66.1493, 0.3489,
0.3532

■ 59.3054, 0.3706,
0.3657

■ 73.6553, 0.3299,
0.3410

■ 53.0952, 0.3951,
0.3782

■ 81.8329, 0.3135,
0.3295

■ 47.5013, 0.4221,
0.3898

■ 90.6240, 0.2999,
0.3200

■ 42.5019, 0.4511,
0.3995

■ 96.2265, 0.2999,
0.3290

■ 38.0737, 0.4807,
0.4061

■ 34.1911, 0.5094,
0.4082

■ 30.8257, 0.5349,
0.4050

■ 28.0685, 0.5552,
0.3974

Harmonies

Analogous

The Analogous color harmony consists of three colors that are next to each other on the color wheel.



66.1493, 0.3494, 0.3388



66.1493, 0.3489, 0.3532



66.1493, 0.3385, 0.3617

Triad

The Triadic color harmony groups three colors that are evenly spaced from another and form a triangle on the color wheel.



66.1493, 0.3489, 0.3532



66.1493, 0.2863, 0.3349



66.1493, 0.3033, 0.2991

Complementary

The Complementary color scheme is a pair of colors which are on the opposite of each other on the color wheel.



66.1493, 0.3489, 0.3532



63.4559, 0.2805, 0.3035

Split Complementary

Split-complementary colors differ from the complementary color scheme. The scheme consists of three colors, the original color and two neighbors of the complement color.



66.1493, 0.2870, 0.2974



66.1493, 0.3489, 0.3532



66.1493, 0.2774, 0.3174

Square

The Square scheme is like the rectangle color scheme, but the four colors are evenly spaced on the color wheel.



66.1493, 0.3489, 0.3532



66.1493, 0.3022, 0.3512



66.1493, 0.2777, 0.3038



66.1493, 0.3226, 0.3082

Rectangle

The Rectangle color scheme consists of four colors that form a rectangle on the color wheel.



66.1493, 0.3489, 0.3532



66.1493, 0.3275, 0.3624



66.1493, 0.2777, 0.3038



66.1493, 0.2973, 0.2976

Sweetspot

The Sweet Spot groups the original color and five complimentary colors.



66.1523, 0.3489, 0.3532



93.8826, 0.3223, 0.3358



57.3889, 0.3319, 0.3003



19.9561, 0.3234, 0.3366



0.0000, 0.0000, 0.0000



21.4041, 0.3127, 0.3290

Same Dimension

The Same Dimension uses a secret algorithm to generate beautiful new colors.



66.1523, 0.3489, 0.3532



76.4775, 0.3586, 0.3590



78.5033, 0.3441, 0.3776



16.1925, 0.3281, 0.3398



16.0234, 0.5526, 0.3995



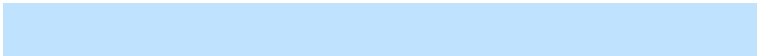
1.4486, 0.5294, 0.4178

Inverse Universe

The Inverse Universe completely reimagines the original color for something new.



63.4559, 0.2805, 0.3035



72.5901, 0.2730, 0.2970



52.5286, 0.2786, 0.2752



15.8999, 0.2981, 0.3179



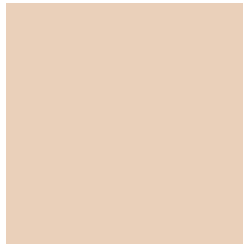
12.0743, 0.1811, 0.1720



1.1402, 0.1877, 0.1955

Previews

White Background



This preview shows how the Yxy color 66.1493, 0.3489, 0.3532 looks on a white background.

Color Contrast Check

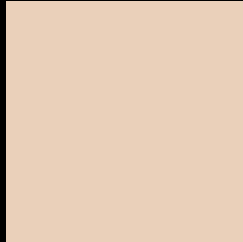
Large Text (above 18pt) WCAG AA × Fail

Any Text WCAG AA × Fail

Large Text (above 18pt) WCAG AAA × Fail

Any Text WCAG AAA × Fail

Black Background



This preview shows how the Yxy color 66.1493, 0.3489, 0.3532 looks on a black background.

Color Contrast Check

Large Text (above 18pt) WCAG AA ✓ Pass

Any Text WCAG AA ✓ Pass

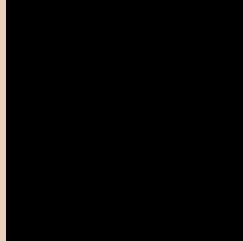
Large Text (above 18pt) WCAG AAA ✓ Pass

Any Text WCAG AAA ✓ Pass

If you want to check with other color combinations, try the [Color Contrast Checker](#).

Yxy 66.1493, 0.3489, 0.3532

Background



This preview shows how black text looks on a background with the Yxy color 66.1493, 0.3489, 0.3532.



This preview shows how white text looks on a background with the Yxy color 66.1493, 0.3489, 0.3532.

Color Blindness Simulation

Color vision deficiency is a very complex topic, and I could not describe the different causes any better than Wikipedia does, so if you want to learn more, you should check out their [article about color blindness](#).

Dichromacy



Original Color

66.1493, 0.3489, 0.3532

Protanopia

66.2474, 0.3372, 0.3561

Deuteranopia

66.1277, 0.3553, 0.3485



Tritanopia

66.0035, 0.3281, 0.3121

Trichromacy



Original Color

66.1493, 0.3489, 0.3532

Protanomaly

66.3451, 0.3413, 0.3559

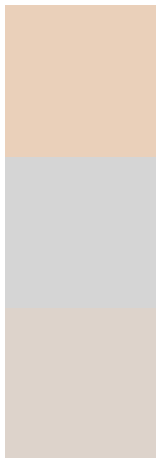
Deuteranomaly

66.0812, 0.3526, 0.3497

Tritanomaly

66.1722, 0.3360, 0.3269

Monochromacy



Original Color

66.1493, 0.3489, 0.3532

Achromatopsia

66.5387, 0.3127, 0.3290

Achromatomaly

66.2725, 0.3258, 0.3380

CSS Examples

Text

The CSS property to change the color of the text to Yxy 66.1493, 0.3489, 0.3532 is called "color". The color property can be set on classes, ids or directly on the HTML element.

This example shows how text in the color `rgb(234, 208, 186)` looks like.

```
.text, #text, p{  
    color:rgb(234, 208, 186)  
}
```

If you want to add a text shadow in that color use the text-shadow property, you can generate a text shadow directly with our [CSS Text Shadow Generator](#).

Here you see how black text with a 4 pixel rgb(234, 208, 186) colored shadow looks like.

```
.shadow{ text-shadow: 4px 4px 2px rgb(234, 208, 186) }
```

Border

The CSS property to change the border of an element to Yxy 66.1493, 0.3489, 0.3532 is called "border". The border property can be set on classes, ids or directly on the HTML element.

This example shows the color as border, it can be applied via the CSS property "border" or "border-color".

```
.border, #border, table{ border:4px solid rgb(234, 208, 186) }
```

If only the border color should be changed use the property `border-color`.

```
.border{ border-color:rgb(234, 208, 186) }
```

If you want to add a box shadow in that color use:

Here you see how a box with a 4 pixel `rgb(234, 208, 186)` colored shadow looks like.

```
.boxshadow{ -moz-box-shadow:4px 4px 4px 4px rgb(234, 208, 186); -webkit-box-shadow:4px 4px 4px 4px rgb(234, 208, 186); box-shadow:4px 4px 4px 4px rgb(234, 208, 186) }
```


Background

The CSS property to change the background color of an element to Yxy 66.1493, 0.3489, 0.3532 is called "background". The background property can be set on classes, ids or directly on the HTML element.

```
.background, #background, body{  
background: rgb(234, 208, 186) }
```

If only the background color should be changed can be used:

```
.background{ background-color: rgb(234,  
208, 186) }
```

This example shows the color as background, it is applied via the CSS property "background".

To optimize and compress your CSS code, you can use our [online CSS compressor and optimizer](#) based on csstidy. If you want to create a linear or radial gradient as background or border, check our [CSS Gradient Generator](#).

Hey! You found this booklet interesting? Support Converting Colors with the new Membership Option!

The pro membership hides all ads, plus gives you double the colors in the color bucket, and more awesome pro features!

[Learn more, Memberships starting at \\$2.50/m!](#)

**Follow me
on Twitter!**

@ConvertingColor