

Converting Colors

Yxy(66.3160, 0.3336, 0.3422)

Have a look what the booklet for
Yxy(66.3160, 0.3336, 0.3422)
contains.

Yxy(66.3392, 0.3334, 0.3424)	3
Conversions	4
Details	6
Harmonies	12
Previews	24
Color Blindness Simulation	27
CSS Examples	30

Color

Yxy(66.3392, 0.3334, 0.3424)

Conversions

Conversions Part 1

Format	Color
Hex	E2D2C6
RGB	226, 210, 198
RGB Percent	89%, 82%, 78%
CMY	0.1138, 0.1764, 0.2236
CMYK	0.00, 0.07, 0.12, 0.11
HSL	26°, 33%, 83%
HSV	26°, 12%, 89%
XYZ	64.5955, 66.3392, 62.8130
YIQ	213.4160, 13.3880, -0.3400

Conversions

Conversions Part 2

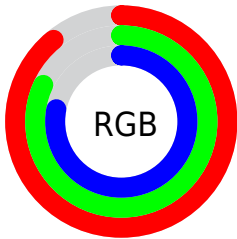
Format	Color
R _Y B	226, 219, 198
Decimal	14865094
CIE Lab	85.17, 3.53, 7.94
CIE LCh	85, 8.686, 66.047
Yxy	66.3392, 0.3334, 0.3424
Android (android.graphics.Color)	4293055174 (0xFFE2D2C6)
YUV	213.4160, -7.6001, 11.0362
Hunter-Lab	81.4489, -0.9708, 11.2900

Details

The Yxy color **66.3392, 0.3334, 0.3424** is a light color, and the websafe version is hex **CCCCCC**. A complement of this color would be **65.5541, 0.2935, 0.3152**, and the grayscale version is **66.8767, 0.3127, 0.3290**.

A 20% lighter version of the original color is **100.0000, 0.3127, 0.3290**, and **34.4485, 0.3391, 0.3465** is the 20% darker color. If you saturate the color by 10%, you get **59.2686, 0.3531, 0.3539**, and if you desaturate by 10%, it is **74.0832, 0.3164, 0.3315**.

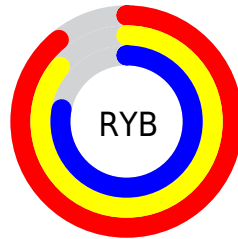
Distribution



Red (89%)

Green (82%)

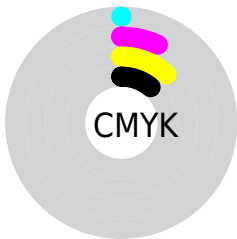
Blue (78%)



Red (89%)

Yellow (86%)

Blue (78%)

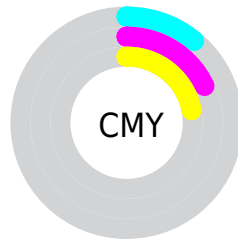


Cyan (0%)

Magenta (7%)

Yellow (12%)

Black (11%)



Cyan (11%)

Magenta (18%)

Yellow (22%)

Brightness & Saturation Gradients

These gradients show how the Yxy color 66.3392, 0.3334, 0.3424 changes by changing the brightness by 10 percent. The first figure shows a shift by +10% for each color and the second figure -10%.

Similar to the brightness gradients but the following saturation gradients show a change of the Yxy color 66.3392, 0.3334, 0.3424 by changing the saturation by 10% instead.

66.3392, 0.3334,
0.3424

66.3392, 0.3334,
0.3424

447.5890, 0.3236,
0.3362

48.5478, 0.3357,
0.3438

113.9730, 0.3300,
0.3402

34.2609, 0.3385,
0.3456

144.5843, 0.3286,
0.3394

23.0941, 0.3422,
0.3479

180.2376, 0.3275,
0.3387

14.6630, 0.3470,
0.3509

221.3174, 0.3265,
0.3380

8.5832, 0.3538,
0.3549

268.2080, 0.3257,
0.3375

4.4703, 0.3638,
0.3609

321.2939, 0.3249,

1.9400, 0.3803,

0.3370

380.9594, 0.3242,
0.3366

0.3702

0.5723, 0.4959,
0.4505

0.0000, 0.0000,
0.0000

66.3392, 0.3334,
0.3424

66.3392, 0.3334,
0.3424

59.2686, 0.3531,
0.3539

74.0832, 0.3164,
0.3315

52.8439, 0.3756,
0.3657

82.5099, 0.3018,
0.3213

47.0481, 0.4012,
0.3773

90.9261, 0.2951,
0.3226

41.8602, 0.4295,
0.3879

94.9046, 0.2952,
0.3289

■ 37.2580, 0.4598,
0.3965

■ 33.2176, 0.4908,
0.4017

■ 29.7126, 0.5205,
0.4024

■ 26.7140, 0.5464,
0.3976

■ 24.7438, 0.5632,
0.3910

Harmonies

Analogous

The Analogous color harmony consists of three colors that are next to each other on the color wheel.



66.3392, 0.3332, 0.3341



66.3392, 0.3334, 0.3424



66.3392, 0.3280, 0.3473

Triad

The Triadic color harmony groups three colors that are evenly spaced from another and form a triangle on the color wheel.



66.3392, 0.3334, 0.3424



66.3392, 0.2983, 0.3332



66.3392, 0.3066, 0.3115

Complementary

The Complementary color scheme is a pair of colors which are on the opposite of each other on the color wheel.



66.3392, 0.3334, 0.3424



65.5541, 0.2935, 0.3152

Split Complementary

Split-complementary colors differ from the complementary color scheme. The scheme consists of three colors, the original color and two neighbors of the complement color.



66.3392, 0.2975, 0.3110



66.3392, 0.3334, 0.3424



66.3392, 0.2927, 0.3233

Square

The Square scheme is like the rectangle color scheme, but the four colors are evenly spaced on the color wheel.



66.3392, 0.3334, 0.3424



66.3392, 0.3077, 0.3420



66.3392, 0.2924, 0.3153



66.3392, 0.3176, 0.3165

Rectangle

The Rectangle color scheme consists of four colors that form a rectangle on the color wheel.



66.3392, 0.3334, 0.3424



66.3392, 0.3220, 0.3478



66.3392, 0.2924, 0.3153



66.3392, 0.3033, 0.3108

Sweetspot

The Sweet Spot groups the original color and five complimentary colors.



66.3421, 0.3334, 0.3424



95.7066, 0.3190, 0.3332



61.4143, 0.3227, 0.3110



20.3158, 0.3203, 0.3340



0.0000, 0.0000, 0.0000



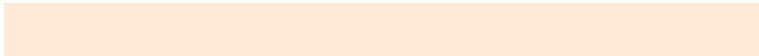
21.4041, 0.3127, 0.3290

Same Dimension

The Same Dimension uses a secret algorithm to generate beautiful new colors.



66.3421, 0.3334, 0.3424



84.6457, 0.3385, 0.3455



73.3596, 0.3315, 0.3571



14.6648, 0.3281, 0.3391



14.3454, 0.5605, 0.3931



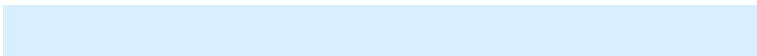
1.1695, 0.5336, 0.4145

Inverse Universe

The Inverse Universe completely reimagines the original color for something new.



65.5541, 0.2935, 0.3152



83.4055, 0.2892, 0.3120



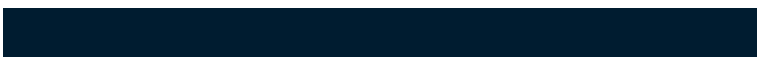
58.9460, 0.2931, 0.2993



14.5338, 0.2981, 0.3187



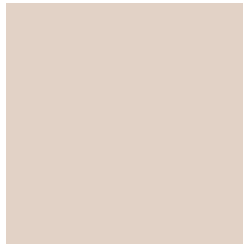
12.3041, 0.1840, 0.1823



1.0296, 0.1909, 0.2071

Previews

White Background



This preview shows how the Yxy color 66.3392, 0.3334, 0.3424 looks on a white background.

Color Contrast Check

Large Text (above 18pt) WCAG AA × Fail

Any Text WCAG AA × Fail

Large Text (above 18pt) WCAG AAA × Fail

Any Text WCAG AAA × Fail

Black Background



This preview shows how the Yxy color 66.3392, 0.3334, 0.3424 looks on a black background.

Color Contrast Check

Large Text (above 18pt) WCAG AA ✓ Pass

Any Text WCAG AA ✓ Pass

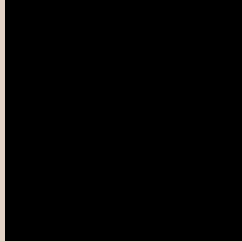
Large Text (above 18pt) WCAG AAA ✓ Pass

Any Text WCAG AAA ✓ Pass

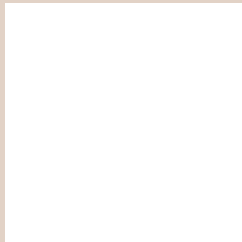
If you want to check with other color combinations, try the [Color Contrast Checker](#).

Yxy 66.3392, 0.3334, 0.3424

Background



This preview shows how black text looks on a background with the Yxy color 66.3392, 0.3334, 0.3424.



This preview shows how white text looks on a background with the Yxy color 66.3392, 0.3334, 0.3424.

Color Blindness Simulation

Color vision deficiency is a very complex topic, and I could not describe the different causes any better than Wikipedia does, so if you want to learn more, you should check out their [article about color blindness](#).

Dichromacy



Original Color

66.3392, 0.3334, 0.3424

Protanopia

66.4261, 0.3278, 0.3436

Deuteranopia

66.1369, 0.3437, 0.3355



Tritanopia

66.1283, 0.3181, 0.3107

Trichromacy



Original Color

66.3392, 0.3334, 0.3424

Protanomaly

66.2416, 0.3295, 0.3425

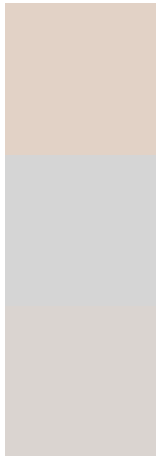
Deuteranomaly

66.2416, 0.3394, 0.3378

Tritanomaly

65.9747, 0.3237, 0.3214

Monochromacy



Original Color

66.3392, 0.3334, 0.3424

Achromatopsia

66.5387, 0.3127, 0.3290

Achromatomaly

66.5465, 0.3199, 0.3335

CSS Examples

Text

The CSS property to change the color of the text to Yxy 66.3392, 0.3334, 0.3424 is called "color". The color property can be set on classes, ids or directly on the HTML element.

This example shows how text in the color `rgb(226, 210, 198)` looks like.

```
.text, #text, p{  
    color:rgb(226, 210, 198)  
}
```

If you want to add a text shadow in that color use the text-shadow property, you can generate a text shadow directly with our [CSS Text Shadow Generator](#).

Here you see how black text with a 4 pixel rgb(226, 210, 198) colored shadow looks like.

```
.shadow{ text-shadow: 4px 4px 2px rgb(226, 210, 198) }
```

Border

The CSS property to change the border of an element to Yxy 66.3392, 0.3334, 0.3424 is called "border". The border property can be set on classes, ids or directly on the HTML element.

This example shows the color as border, it can be applied via the CSS property "border" or "border-color".

```
.border, #border, table{ border:4px solid rgb(226, 210, 198) }
```

If only the border color should be changed use the property `border-color`.

```
.border{ border-color:rgb(226, 210, 198) }
```

If you want to add a box shadow in that color use:

Here you see how a box with a 4 pixel `rgb(226, 210, 198)` colored shadow looks like.

```
.boxshadow{ -moz-box-shadow:4px 4px 4px  
4px rgb(226, 210, 198); -webkit-box-  
shadow:4px 4px 4px 4px rgb(226, 210, 198);  
box-shadow:4px 4px 4px 4px rgb(226, 210,  
198) }
```


Background

The CSS property to change the background color of an element to Yxy 66.3392, 0.3334, 0.3424 is called "background". The background property can be set on classes, ids or directly on the HTML element.

```
.background, #background, body{  
background: rgb(226, 210, 198) }
```

If only the background color should be changed can be used:

```
.background{ background-color: rgb(226,  
210, 198) }
```

This example shows the color as background, it is applied via the CSS property "background".

To optimize and compress your CSS code, you can use our [online CSS compressor and optimizer](#) based on csstidy. If you want to create a linear or radial gradient as background or border, check our [CSS Gradient Generator](#).

Hey! You found this booklet interesting? Support Converting Colors with the new Membership Option!

The pro membership hides all ads, plus gives you double the colors in the color bucket, and more awesome pro features!

[Learn more, Memberships starting at \\$2.50/m!](#)

**Follow me
on Twitter!**

@ConvertingColor