

Converting Colors

$Yxy(66.6461, 0.3311, 0.3286)$

Have a look what the booklet for
Yxy(66.6461, 0.3311, 0.3286)
contains.

| | |
|--|----|
| Yxy(66.8216, 0.3310, 0.3291) | 3 |
| <i>Conversions</i> | 4 |
| <i>Details</i> | 6 |
| <i>Harmonies</i> | 12 |
| <i>Previews</i> | 24 |
| <i>Color Blindness Simulation</i> | 27 |
| <i>CSS Examples</i> | 30 |

Color

Yxy(66.8216, 0.3310, 0.3291)

Conversions

Conversions Part 1

| Format | Color |
|-------------|---------------------------|
| Hex | E8D0D0 |
| RGB | 232, 208, 208 |
| RGB Percent | 91%, 82%, 82% |
| CMY | 0.0904, 0.1842, 0.1844 |
| CMYK | 0.00, 0.10, 0.10, 0.09 |
| HSL | 0°, 34%, 86% |
| HSV | 0°, 10%, 91% |
| XYZ | 67.2074, 66.8216, 69.0145 |
| YIQ | 215.1760, 14.3040, 5.0880 |

Conversions

Conversions Part 2

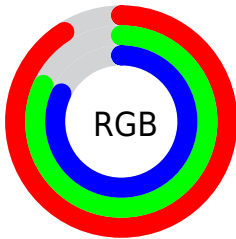
| Format | Color |
|-------------------------------------|-------------------------------|
| R _Y B | 232, 208, 208 |
| Decimal | 15257808 |
| CIE Lab | 85.41, 8.32, 3.05 |
| CIE LCh | 85, 8.861, 20.143 |
| Yxy | 66.8216, 0.3310, 0.3291 |
| Android (android.graphics.Color) | 4293447888 (0xFFE8D0D0) |
| YUV | 215.1760, -3.5378, 14.7546 |
| Hunter-Lab | 81.7445, 3.7035, 7.1643 |

Details

The Yxy color **66.8216, 0.3310, 0.3291** is a light color, and the websafe version is hex **CCCCCC**. A complement of this color would be **76.8957, 0.2968, 0.3289**, and the grayscale version is **68.0957, 0.3127, 0.3290**.

A 20% lighter version of the original color is **100.0000, 0.3127, 0.3290**, and **34.6744, 0.3349, 0.3291** is the 20% darker color. If you saturate the color by 10%, you get **55.2860, 0.3532, 0.3292**, and if you desaturate by 10%, it is **80.1780, 0.3133, 0.3290**.

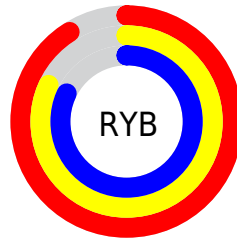
Distribution



Red (91%)

Green (82%)

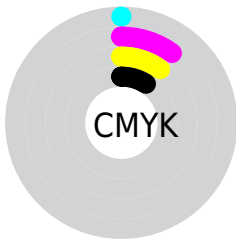
Blue (82%)



Red (91%)

Yellow (82%)

Blue (82%)

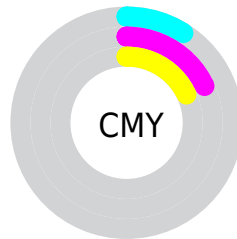


Cyan (0%)

Magenta (10%)

Yellow (10%)

Black (9%)



Cyan (9%)


Magenta (18%)


Yellow (18%)

Brightness & Saturation Gradients


These gradients show how the Yxy color 66.8216, 0.3310, 0.3291 changes by changing the brightness by 10 percent. The first figure shows a shift by +10% for each color and the second figure -10%.

Similar to the brightness gradients but the following saturation gradients show a change of the Yxy color 66.8216, 0.3310, 0.3291 by changing the saturation by 10% instead.


 66.8216, 0.3310,
0.3291

 66.8216, 0.3310,
0.3291


449.3095, 0.3224,
0.3291

 48.9397, 0.3330,
0.3291


114.6647, 0.3280,
0.3291

 34.5716, 0.3355,
0.3291


145.3947, 0.3268,
0.3291

 23.3331, 0.3387,
0.3290


181.1762, 0.3258,
0.3291

 14.8396, 0.3430,
0.3289

222.3936, 0.3249,
0.3291

 8.7069, 0.3490,
0.3288

269.4312, 0.3242,
0.3291

 4.5505, 0.3579,
0.3284

322.6734, 0.3235,

 1.9860, 0.3725,

0.3291

0.3277

382.5047, 0.3229,
0.3291

0.5993, 0.4266,
0.3309

0.0000, 0.0000,
0.0000

66.8216, 0.3310,
0.3291

66.8216, 0.3310,
0.3291

55.2860, 0.3532,
0.3292

80.1780, 0.3133,
0.3290

45.4841, 0.3810,
0.3294

95.4199, 0.2991,
0.3289

37.3348, 0.4153,
0.3295

95.8891, 0.2987,
0.3290

30.7471, 0.4562,
0.3297

■ 25.6211, 0.5027,
0.3298

■ 21.8457, 0.5508,
0.3300

■ 19.2937, 0.5940,
0.3300

■ 17.8136, 0.6247,
0.3301

■ 17.1585, 0.6400,
0.3301

Harmonies

Analogous

The Analogous color harmony consists of three colors that are next to each other on the color wheel.



66.8216, 0.3226, 0.3199



66.8216, 0.3310, 0.3291



66.8216, 0.3344, 0.3385

Triad

The Triadic color harmony groups three colors that are evenly spaced from another and form a triangle on the color wheel.



66.8216, 0.3310, 0.3291



66.8216, 0.3134, 0.3457



66.8216, 0.2939, 0.3124

Complementary

The Complementary color scheme is a pair of colors which are on the opposite of each other on the color wheel.



66.8216, 0.3310, 0.3291



76.8957, 0.2968, 0.3289

Split Complementary

Split-complementary colors differ from the complementary color scheme. The scheme consists of three colors, the original color and two neighbors of the complement color.



66.8216, 0.2915, 0.3190



66.8216, 0.3310, 0.3291



66.8216, 0.3027, 0.3384

Square

The Square scheme is like the rectangle color scheme, but the four colors are evenly spaced on the color wheel.



66.8216, 0.3310, 0.3291



66.8216, 0.3241, 0.3483



66.8216, 0.2947, 0.3285



66.8216, 0.3012, 0.3103

Rectangle

The Rectangle color scheme consists of four colors that form a rectangle on the color wheel.



66.8216, 0.3310, 0.3291



66.8216, 0.3333, 0.3436



66.8216, 0.2947, 0.3285



66.8216, 0.2925, 0.3142

Sweetspot

The Sweet Spot groups the original color and five complimentary colors.



66.8246, 0.3310, 0.3291



94.7416, 0.3176, 0.3290



68.0736, 0.3139, 0.3036



19.9855, 0.3190, 0.3290



0.0000, 0.0000, 0.0000



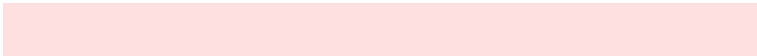
21.4041, 0.3127, 0.3290

Same Dimension

The Same Dimension uses a secret algorithm to generate beautiful new colors.



66.8246, 0.3310, 0.3291



80.2211, 0.3345, 0.3291



72.8718, 0.3295, 0.3419



14.3723, 0.3293, 0.3291



9.5315, 0.6399, 0.3301



0.7059, 0.6395, 0.3304

Inverse Universe

The Inverse Universe completely reimagines the original color for something new.



76.8957, 0.2968, 0.3289



94.6147, 0.2943, 0.3289



70.4003, 0.2967, 0.3157



16.3315, 0.2982, 0.3289



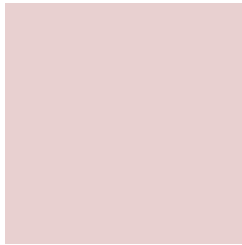
35.1410, 0.2245, 0.3282



2.5983, 0.2245, 0.3283

Previews

White Background



This preview shows how the Yxy color 66.8216, 0.3310, 0.3291 looks on a white background.

Color Contrast Check

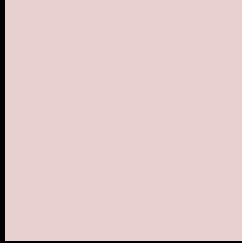
Large Text (above 18pt) WCAG AA × Fail

Any Text WCAG AA × Fail

Large Text (above 18pt) WCAG AAA × Fail

Any Text WCAG AAA × Fail

Black Background



This preview shows how the Yxy color 66.8216, 0.3310, 0.3291 looks on a black background.

Color Contrast Check

Large Text (above 18pt) WCAG AA ✓ Pass

Any Text WCAG AA ✓ Pass

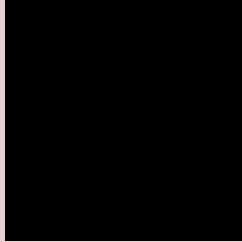
Large Text (above 18pt) WCAG AAA ✓ Pass

Any Text WCAG AAA ✓ Pass

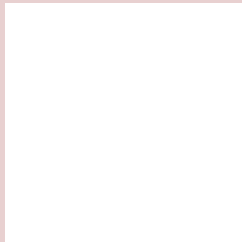
If you want to check with other color combinations, try the [Color Contrast Checker](#).

Yxy 66.8216, 0.3310, 0.3291

Background



This preview shows how black text looks on a background with the Yxy color 66.8216, 0.3310, 0.3291.



This preview shows how white text looks on a background with the Yxy color 66.8216, 0.3310, 0.3291.

Color Blindness Simulation

Color vision deficiency is a very complex topic, and I could not describe the different causes any better than Wikipedia does, so if you want to learn more, you should check out their [article about color blindness](#).

Dichromacy



Original Color

66.8216, 0.3310, 0.3291

Protanopia

67.1971, 0.3178, 0.3312

Deuteranopia

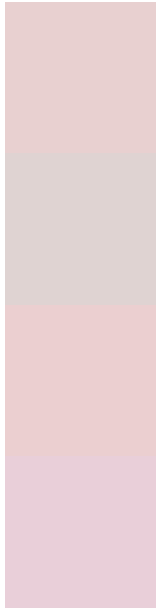
67.0126, 0.3342, 0.3280



Tritanopia

66.9090, 0.3226, 0.3120

Trichromacy



Original Color

66.8216, 0.3310, 0.3291

Protanomaly

66.9296, 0.3224, 0.3301

Deuteranomaly

66.8419, 0.3335, 0.3280

Tritanomaly

66.9590, 0.3253, 0.3183

Monochromacy



Original Color

66.8216, 0.3310, 0.3291

Achromatopsia

67.9542, 0.3127, 0.3290

Achromatomaly

67.2126, 0.3194, 0.3290

CSS Examples

Text

The CSS property to change the color of the text to Yxy 66.8216, 0.3310, 0.3291 is called "color". The color property can be set on classes, ids or directly on the HTML element.

This example shows how text in the color `rgb(232, 208, 208)` looks like.

```
.text, #text, p{  
    color:rgb(232, 208, 208)  
}
```

If you want to add a text shadow in that color use the text-shadow property, you can generate a text shadow directly with our [CSS Text Shadow Generator](#).

Here you see how black text with a 4 pixel rgb(232, 208, 208) colored shadow looks like.

```
.shadow{ text-shadow: 4px 4px 2px rgb(232, 208, 208) }
```

Border

The CSS property to change the border of an element to Yxy 66.8216, 0.3310, 0.3291 is called "border". The border property can be set on classes, ids or directly on the HTML element.

This example shows the color as border, it can be applied via the CSS property "border" or "border-color".

```
.border, #border, table{ border:4px solid rgb(232, 208, 208) }
```

If only the border color should be changed use the property border-color.

```
.border{ border-color:rgb(232, 208, 208) }
```

If you want to add a box shadow in that color use:

Here you see how a box with a 4 pixel rgb(232, 208, 208) colored shadow looks like.

```
.boxshadow{ -moz-box-shadow:4px 4px 4px  
4px rgb(232, 208, 208); -webkit-box-  
shadow:4px 4px 4px 4px rgb(232, 208, 208);  
box-shadow:4px 4px 4px 4px rgb(232, 208,  
208) }
```


Background

The CSS property to change the background color of an element to Yxy 66.8216, 0.3310, 0.3291 is called "background". The background property can be set on classes, ids or directly on the HTML element.

```
.background, #background, body{  
background: rgb(232, 208, 208) }
```

If only the background color should be changed can be used:

```
.background{ background-color: rgb(232,  
208, 208) }
```

This example shows the color as background, it is applied via the CSS property "background".

To optimize and compress your CSS code, you can use our [online CSS compressor and optimizer](#) based on csstidy. If you want to create a linear or radial gradient as background or border, check our [CSS Gradient Generator](#).

Hey! You found this booklet interesting? Support Converting Colors with the new Membership Option!

The pro membership hides all ads, plus gives you double the colors in the color bucket, and more awesome pro features!

[Learn more, Memberships starting at \\$2.50/m!](#)

**Follow me
on Twitter!**

@ConvertingColor